

Details of your submission

Please provide additional information and supporting documentation as attachments.

To The Secretariat
Electoral Districts Redistribution Panel
c/o NSW Electoral Commission
GPO Box 832
Sydney NSW 2001

Why the Greater Taree and Western New South Wales districts should not be included within the Myall Lakes State Electorate.

The Myall Lakes is Coastal Wetlands.

It includes sensitive Coastal Environmental Marine waterways and National Parks within a Ramsar Zone.

The Myall Lakes has important Environmental Ecologies and Habitats which are not in the interests of pro-western NSW Agricultural areas being included within this areas State Electorate.

This areas Marine, Ecological Habitats and Biodiverse needs would be diametrically opposed to The Greater Taree and Western New South Wales Agricultural areas and would prove dysfunctional to this areas needs if it were to be applied.

The Myall lakes were designated as a Wetland of International Importance under the Ramsar Convention.

The Convention requires that the site is managed to maintain or improve its Ecological Character.

Under The Mid Coast Council, the Great Lakes Council at Forster-Tuncurry was amalgamated with Taree which moved our functioning Coastal Council against residents wishes into the rural agricultural area west of the highway. All decisions are now made via this area.

This Council is now trying to rebrand The Great Lakes/Myall Lakes as the Barrington Coast.

This new council is over 75km away from The Myall Lakes Coastal Wetlands area.

These wetlands are also within The Port Stephens-Great Lakes Marine Park and The Myall Lakes National Park.

As a Coastal Lakes system being closer to, and connected via waterways to The Port Stephens and Newcastle State Electorates, than we are to the agricultural sectors of Taree or Central Western New South Wales.

The Myall Lakes Coastal areas will suffer being hampered by such a huge Agricultural area, not in keeping with The Myall Lakes Ecological Sensitives.

The Myall Lakes Ramsar Site and Ecological Character and Description are within the Port Stephens-Great Lakes Marine Park.

We are on the boundary of Port Stephens, as is the closer Tea Gardens and Hawks Nest.

Our waterways include Port Stephens not Taree.

As Port Stephens is the closer State and Local Council area, The Myall Lakes Coastal areas should be included within this State Electoral Boundary.

Thereby allowing the Agricultural interests of the Greater Taree and Central West New South Wales to function separate from The Myall Lakes Coastal areas.

The Ramsar site is located on the mid-north coast of New South Wales and is protected by conservation reserves managed by the NSW Government, consisting of Myall Lakes National Park, Little Broughton Island Nature Reserve, Corrie Island Nature Reserve, and part of Gir-um-bit National Park. The estuarine and brackish waters and the beaches and intertidal areas in the site are within Port Stephens – Great Lakes Marine Park.

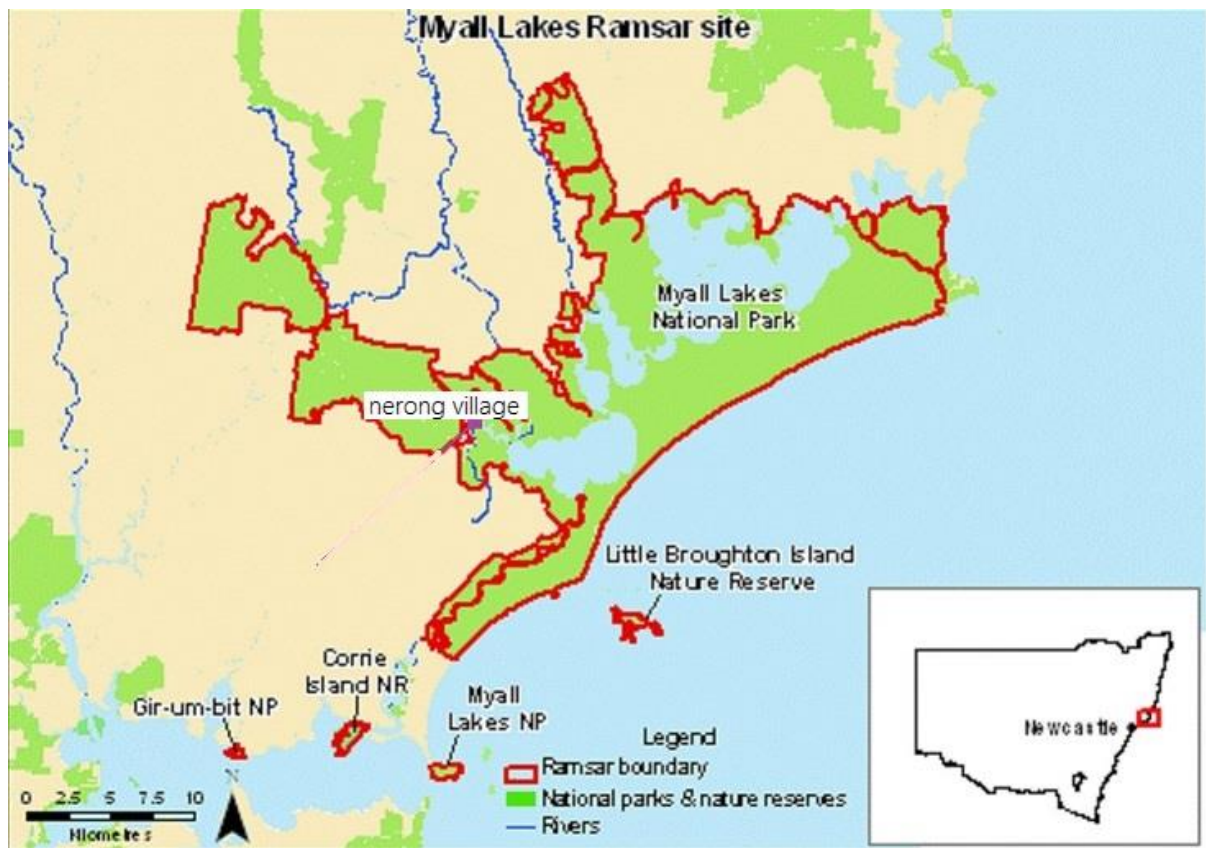
This ecological character description provides baseline information about the wetlands' values and the components, processes and services that characterise Myall Lakes Ramsar site.

It also identifies limits of acceptable change, threats to the Ramsar site's ecological character, knowledge gaps in the site's components and processes, and recommendations for future monitoring.

<https://www.environment.nsw.gov.au/research-and-publications/publications-search/myall-lakes-ramsar-site-ecological-character-description>

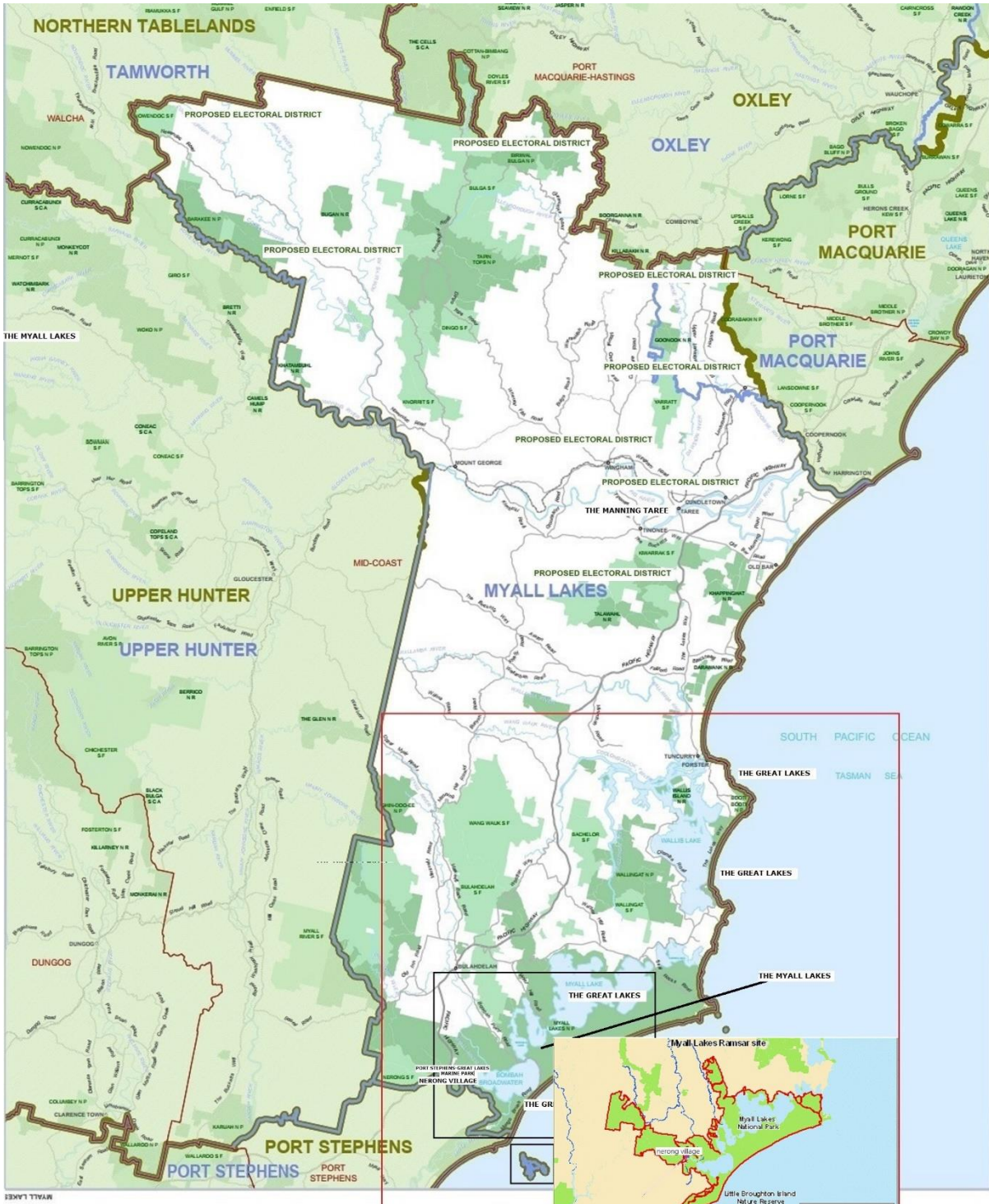
Thankyou.
M Graham
[REDACTED]

For further information visit elections.nsw.gov.au/redistribution



NERONG VILLAGE





2013 Redistribution Electoral District names and boundaries (as determined by the Parliamentary Electorates and Elections Act)

2020 Redistribution proposed Electoral District names and boundaries (as determined - s 135 of the Electoral Act 2017)

Local Government Area names and boundaries (as at September 2020)

NSW
NSW
NSW



STATE OF NEW SOUTH WALES
MAP OF THE PROPOSED ELECTORAL DISTRICT OF
MYALL LAKES
As determined by the Electoral Districts Redistribution Panel Pursuant to the Electoral Act 2017 and Constitution Act 1902

Further information, including copies of this map, may be obtained at www.elections.nsw.gov.au/redistribution

© Spatial Services (a division of the Department of Customer Services) 2020
© NSW Electoral Commission 2020

Digital data used in this plan has been sourced from Spatial Services. The pre-existing administrative boundaries and names are sourced from the Digital Cadastral Database (DCDB) and agree with those as at the date of extraction. The cadastral data used to produce this plan was extracted from the DCDB. The DCDB is based on the NSW State Cadastral Survey.

Disclaimer: The publisher of another contributor to this publication accepts no responsibility for any errors, loss or damage resulting from its use or errors or omissions therein. While all care is taken to ensure a high degree of accuracy, users are invited to verify any such discrepancies and consult with the relevant authorities.

This map has been generated by various sources and is provided for information purposes only. Spatial Services, a division of the Department of Customer Services and NSW Electoral Commission (NSWEC) do not warrant or guarantee that the information is free from errors or omissions, or that it is accurate. Spatial Services and NSWEC give no warranty in relation to the information. Spatial Services and NSWEC accept no liability for loss, damage, or costs that you may incur relying on any use or reliance upon the information in this map.

