

Suggestion of the Australian Labor Party  
(New South Wales Branch)  
Electoral Districts Redistribution Panel 2020

Following consultation with stakeholders, and an analysis of legislative requirements, the ALP has taken an approach to this redistribution process which avoids unnecessary boundary changes.

Our submission is that, in the vast majority of seats (71%):

- either no change be made;
- the seat contains all of its existing electors plus additions to meet quota; or
- the seat is shrunk to also meet quota but without requiring an infusion of electors from another district and contains at least 85% of existing electors.

### **Summary of Proposed District Alterations**

Abolished Electoral District: **Cabramatta**

Created Electoral District: **Minto**

Renamed Electoral Districts:

**Summer Hill** renamed **Canterbury**

**Canterbury** renamed **Earlwood**

**Lakemba** renamed **Bankstown**

**Bankstown** renamed **Villawood**

**Liverpool** renamed **Green Valley**

**Holsworthy** renamed **Liverpool**

**Davidson** renamed **Gordon**

**Castle Hill** renamed **Annangrove**

**Upper Hunter** renamed **Singleton**

**Electoral Districts with no boundary changes (12):** Balmain; Rockdale; Auburn; Tweed; Myall Lakes; Port Stephens; Gosford; Terrigal; Swansea; Bathurst; Orange; Albury.

**Electoral Districts under quota which expand whilst retaining all current electors (18):** Vaucluse; Maroubra; Drummoyne; Strathfield; Kogarah; Oatley; Blue Mountains; Pittwater; Manly; North Shore; Willoughby; Cronulla; The Entrance; Charlestown; Northern Tablelands; Dubbo; Murray; Wagga Wagga.

**Electoral Districts over quota which shrink without taking electors from another District (12):** Londonderry; Riverstone; Castle Hill; Camden; Bega; Monaro; Ballina; Port Macquarie; Maitland; Wyong; Lake Macquarie; Newcastle.

**Electoral Districts which would be constituted containing at least 85% of existing electors (24):** Coogee; Sydney; East Hills; Penrith; Mount Druitt; Parramatta; Mulgoa; Granville; Wollondilly; Lane Cove; Ryde; Hornsby; Hawkesbury; Miranda; Kiama; South Coast; Lismore; Clarence; Coffs Harbour; Oxley; Cessnock; Wallsend; Tamworth; Goulburn.

## **Avoidance of the Malapportionment triggers (s28A of the NSW Constitution Act)**

In the preparation of this submission, the ALP has undertaken steps to guard against the triggering of malapportionment provisions in the NSW Constitution.

Section 28A of the NSW Constitution triggers a redistribution if more than a quarter of NSW seats are malapportioned. Malapportionment is defined as when more than a quarter of Districts are more than 5% from the average number of electors for more than two months.

This redistribution is commencing three years before the date of the next election, approximately a year earlier than previous practice. Given that projected figures can be a little awry of actuals, it is submitted that the Commissioners may need to be mindful of taking steps to ensure that this redistribution applies for two Parliaments.

In particular, given the earlier start date to this redistribution process, problems may be posed for containing growth - especially in fast growing districts.

Specific attention is drawn to:

- s28 of the NSW Constitution (no more than 10% variation from the quota at the commencement of the redistribution);
- s17A of the Electoral Act (no District may deviate by more than 10% from the projected quota); and
- s28A of the NSW Constitution, (whereby a redistribution is triggered if more than a quarter of Districts vary by more than 5% from the average enrolment for more than two months),

These provisions, when taken together, make it clear that the Commissioners must consider growth trends when framing Districts according to the numerical and communities of interest provisions of the Acts.

When the quota was struck on 23 March 2020, there were seven districts with enrolments deviating by more than 10% above and none by more than 10% below quota.

Camden, which is 31.8% above quota and projected to be more than 52% above the projected quota, will be a particularly difficult district to contain.

In our suggestion, the ALP has placed 10 districts at more than 5% from quota and none vary by more than 5% from the average at the projected date.

The submission will now examine these districts:

<u>District</u>	<u>23/3/20 %variation</u>	<u>17/4/23 %variation</u>
1. Heffron	-9.8	0.2
2. Oatley	5.4	2.3
3. Riverstone	-9.1	2.5
4. Macquarie Fields	-8.9	-3.3
5. Campbelltown	-8.3	1.6
6. Camden	-9.7	-3.3
7. Wakehurst	5.9	2.4
8. Davidson	6.7	2.9
9. Castle Hill	-9.0	-4.8
10. Maitland	-6.1	-3.6

As can be seen from the above table, all ten seats are trending toward the mean.

Notably, the rapidly growing Camden district has some of its fastest growing suburbs at the north-eastern end of the Camden LGA. These suburbs adjoin the Campbelltown district, which is growing at less than the State average.

In the case of Camden especially, but also elsewhere, prudence requires that fast growing suburbs be combined with slower growing areas.

Also, for every district, we have considered future growth in the three years beyond 2023.

It is our firm view that, under recommendations contained in our submission, s28A won't be breached during the next Parliamentary term.

Furthermore, we have also factored community of interest criteria when deciding enrolments for proposed electorates. For example, splitting a suburb might assist with growth in a particular District but at the expense of other criteria.

We think we have struck the right balance.

## **REGIONS IN DETAIL**

In this section, we provide the details of, and the reasons for, the ALP's contentions.

However, this submission will not explore the movement of electors that is practically inevitable – such as the movement of Bulli into Heathcote or the Liverpool Plains going from Upper Hunter.

Where we shall concentrate our arguments will be in those seats where our suggested changes may be challenged by others.

However, for each region, we provide a table containing each District's current enrolment at the projected date. It gives a useful guide to the growth trends for each District. We also

provide a summary table of the suggested enrolments, current and future, for each electorate by region.

The submission will begin with the Inner City:

INNER 2PP	23/03/20 (Var)	17/04/23 (Var)
1. Vaucluse	56 046(-2.0)	57 445 (-3.0)
2. Coogee	54 810(-4.2)	55 467 (-6.4)
3. Maroubra	57 064(-0.2)	57 734 (-2.6)
4. Heffron	61 546(7.6)	67 334 (13.7)
5. Sydney	55 296(-3.3)	56 716 (-4.3)
6. Newtown	56 338(-1.5)	56 886(-4.0)
7. Summer Hill	57 190(-)	59 503 (0.4)
8. Balmain	57 805(1.1)	59 054 (-0.3)
9. Drummoyne	54 154(-5.3)	55 307 (-6.7)
10. Strathfield	53 950(-5.7)	55 735 (-5.9)
11. Canterbury	57 473(0.5)	58 536 (-1.2)
<b>Totals</b>	<b>621 672(-13.0)</b>	<b>639 717 (-20.2)</b>

In enrolment trends, in the inner city, there has been a dramatic change from the 2013 redistribution. Previously, growth was so strong that a new seat, Newtown was created.

On this occasion, as can be seen from the table above, enrolment growth is falling below the State average.

It makes sense to start with Heffron, the seat with the highest enrolments.

#### WATERLOO

The submitted boundary continues west along Phillip Street to incorporate, in effect, an area between Phillip Street and Raglan Street. This places the entire suburb of Waterloo within the one electorate.

The community of interest of this new proposed addition to Heffron is identical with the community of interest that currently exists within the suburb of Waterloo south of Raglan Street - where the current boundary between Heffron and Newtown lies.

This boundary is a clear identifiable natural boundary.

#### ERSKINEVILLE.

The submitted boundary incorporates the entire suburb Erskineville in the one electorate of Newtown. Currently the suburb is divided by a rail-line with the eastern side of that line in Heffron and the Western side in Newtown.

The community of interest in the entire suburb of Erskineville is identical, and the community of interest between the suburb of Erskineville and the neighbouring suburb of Newtown - within the electoral district of Newtown - are also very similar.

#### MOORE PARK AND CENTENNIAL PARK

Until the 2013 redistribution, these suburbs were within the district of Sydney and are returned this time. Given that Sydney is well under quota and will also need to transfer electors to Vaucluse, it makes sense to return these suburbs back to Sydney. The seat will otherwise contain the iconic suburbs at the heart of the city.

#### KENSINGTON AND KINGSFORD

The submission proposes returning that part of Kensington and Kingsford that was added to Heffron at the last redistribution back to Coogee. The submission encompasses Randwick Racecourse and the University of New South Wales with a community of interest consistent of most areas around the University - with easily identifiable boundaries.

#### **Coogee seat redistribution justification**

The following arguments are advanced in support of proposed changes to the Seat of Coogee.

An addition of electors at the western end of the Coogee electorate will aid in dissipating a number of divisions that currently exists between constituents, stakeholders and assets.

Currently, as a result of the electorate boundaries, divisions exist in the areas of education, healthcare and transportation.

Anzac Parade is the natural sociological boundary between seats. The large traffic flow along Anzac Parade provides a real boundary between people and their social activities. There is also a long time local identification based upon which side of Anzac Parade people live and work.

#### *Education:*

Randwick Boys and Randwick Girls is the only public high school in the electorate of Coogee. The catchment for Randwick Boys and Girls currently extends west of the current Coogee electoral boundary.

The proposed boundary would take in a greater proportion of the school's catchment, including Kensington Primary School which is a feeder school to Randwick Boys and Girls High Schools.

The proposed boundary will bring all but one of the feeder public schools for Randwick Boys and Girls High School into the Coogee electorate boundaries.

A western extension of the electorate is important in order to ensure that there is continuity for students and parents. This will allow all stakeholders of the schools within the Coogee electorate to be represented in the Coogee Constituency.

Ensuring a continuity of educational infrastructure and the constituency is critical to ensure communities of interest are aligned and that the Member is best able to advocate those interests.

#### *UNSW and Hospitals District*

The proposal will ensure that the University of New South Wales - as well as the Randwick Health Campus that comprises the Prince of Wales, The Royal and Sydney Children's Hospitals - are overseen by a single electorate.

UNSW and the Randwick Campus are currently undergoing a significant transformation that will forge a stronger integration of Health Services and Research between the Hospitals and the university.

The University of New South Wales and Prince of Wales Hospital are the most significant institutions in the general area. These provide both education and health services which are both areas primarily the responsibility of the State government.

Both of these institutions are in an almost constant state of development and having them operate within different State electorates creates additional and duplicating procedural steps. It also impedes endeavours to consider the implications of proposals within a holistic context.

Furthermore, and increasingly, these two institutions are operating collaboratively to produce better outcomes, particularly in relation to medical research. Having them operate under separate State electorates is not in the best interests of the people of NSW.

Whilst clearly separate institutions, the University and the Hospitals are obviously a precinct of important activity with mutual and overlapping needs which would be better met if placed within the same State electorate.

UNSW has had teaching hospital affiliations with the Prince of Wales Hospital; Sydney Children's Hospital Randwick and the Royal Hospital for Women for nearly 60 years and has long expressed a desire for a stronger connection with the Randwick hospital campus.

While the development will ensure a closer partnership of the Local Health District and with the NSW Government, continuity of political leadership will further strengthen this connection and streamline the progress of mutual shared interests.

As it stands, students and professionals that work across both the university and hospital campuses either require advocacy from two separate State MPs or sometimes both, creating confusion and uncertainty.

In addition, a number of auxiliary services for both the university and the hospitals are located across electorate boundaries, between Coogee and Heffron. These include university services located in buildings in Coogee and Hospital services located in buildings in Heffron. Having significant stakeholders slip across electoral boundaries creates uncertainty and confusion – such as a stakeholder located in one electorate and the asset in another.

### *Public Transport*

The CBD and South East Sydney Light Rail, as well as a number of significant bus services and active transport links, run through both the Coogee and Heffron Electorates, before reaching the Maroubra Electorate.

Currently, the vast majority of the bus services operating through this corridor originate from either the Waverley or Randwick Bus Depots, both of which are located within the Coogee electorate. The Light Rail Depot is currently located just outside of the Coogee boundary, within Heffron.

Modifying the seat to be inclusive of all three major public transport depots - as well as the major public transport corridors related to services from these depots - will ensure greater continuity and consistency when advocating for the continued improvement of local transport infrastructure and services.

### **Remaining Inner City Districts**

In our submission, changes to remaining inner city seats should be straight forward.

For example, uniting the suburbs of Woollahra and Edgecliff via a transfer from Sydney, supplements Vaucluse.

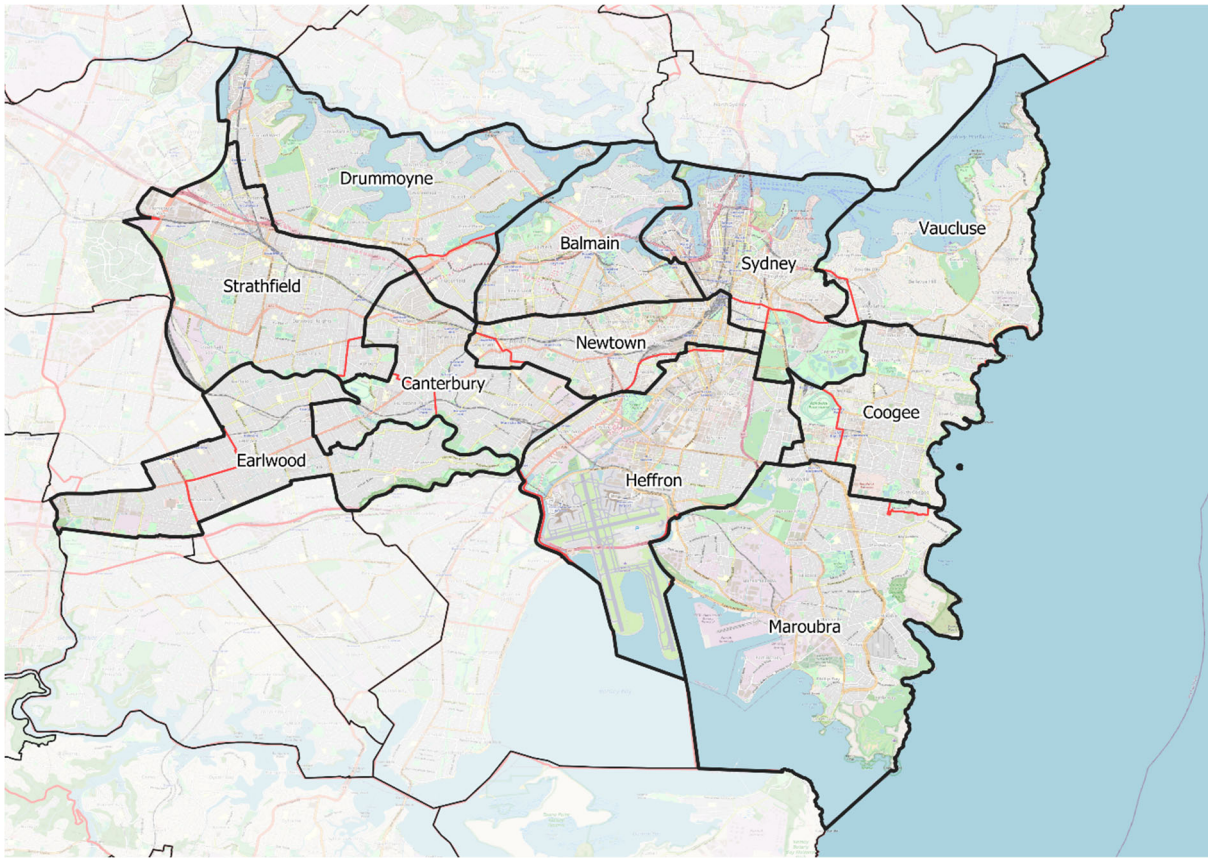
No change is made to Balmain, and Drummoyne regains the suburb of Haberfield, which had been in that district until the 2007 election.

Having gained the suburb of Erskineville from Heffron, Newtown is able to transfer most of its share of the suburb of Surry Hills to Sydney.

Through transfers from Summer Hill, the suburbs of Petersham and Lewisham are fully united in Newtown.

Along with Hurlstone Park, the suburb of Canterbury is on the border of the district of Summer Hill and must be transferred to make up its numbers. As Canterbury is an 1859 electoral name we rename Summer Hill Canterbury.

Inner City ALP Suggestion  
(black proposed, red existing)



St George/Bankstown	23/03/20 (Var)	17/04/23 (Var)
1. Rockdale	56 609(-1.0)	59 229 (-)
2. Kogarah	53 419(-6.6)	54 077 (-8.7)
3.Oatley	54 351(-5.0)	54 546 (-7.9)
4.Lakemba	55 449(-3.1)	56 921 (-3.9)
5.East Hills	55 754(-2.5)	56 282 (-5.0)
6.Bankstown	54 774(-4.2)	57 207 (-3.4)
7.Auburn	56 274(-1.6)	59 374 (0.2)
Totals	386 630(-24.0)	397 636 (-28.8)

By the time we get to Bankstown, the cumulative shortage for all seats in the region mean that there is a shortage of half a seat. As the adjoining districts further west of Granville, Fairfield and Cabramatta are also collectively 20% short the abolition of a district becomes inevitable. An additional problem in the area is that the suburb bearing the seat name,



(Canterbury, as we have seen, but also Lakemba and Bankstown), are right next door to a district requiring a significant infusion of electors. With Canterbury, which has lost that suburb, we revive the electoral name of Earlwood, dormant since 1991. We rename Lakemba to Bankstown, with an amalgamated seat, consequent to our proposed abolition of Cabramatta, consisting of an amalgam of the western end of Bankstown with parts of the districts of Cabramatta and Fairfield. We call this seat Villawood.

Let's also discuss seats in the St George Area. We make no change to Rockdale and we move the boundary of Oatley to the M5.

## KOGARAH

Our recommendation for the Seat of Kogarah is that the boundaries on the south, east and west remain essentially the same as they have been for the last six years - eight by the time of the 2023 election. We propose that the electorate be extended north to unite the suburbs within the electorate, reflect the clear community of interest of residents and to increase the number of electors to meet the average enrolment requirement.

The proposed boundaries follow what are the most distinguishable and most prominent physical features in the district, the major thoroughfares of King Georges Road, The Princes Highway, Bexley Road and Moorefields Road. These roads are universally identifiable and well known by all residents in the community and the major means of travel across the region.

Given the electorate is under quota and Kogarah must have additional electors in order to meet average enrolment, we propose extending the seat north and including a small area on the western boundary in order to unite the suburb of Kingsgrove and Beverly Hills into the one electorate. This reflects the social and economic community of interest shared by these residents.

Due to the nature of movement in surrounding seats, the question for the Commissioners might be whether Kogarah should move over the M5 motorway or alternatively over King Georges Road? We urge Commissioners to take the seat north and in the process keep the existing western boundary of King Georges Road (with the Beverly Hills addition) as this will keep the electorate largely as a geographic quadrangle, thereby being easy to identify for electors and policy makers alike.

The natural boundary to the north is Moorefields Road, which is again universally known and recognised as a major physical feature and travel route within the area. Residents living south of Moorefield road enjoy the shopping, dining experiences to their south in Beverly Hills, Hurstville and would likely access the train services at Beverley Hills, Kingsgrove and Bexley North train stations, reinforcing their community of interest.

Kingsgrove and Beverly Hills shopping, church and rail connections are all located on or near the border of Kogarah and Canterbury indicating that while civic and commercial activity is located in the seat of Kogarah half the residences are located in Canterbury. Uniting them

into a single electorate will allow a single community of interest and a single elected representative in the NSW Parliament.

The Electorate of Kogarah has been the centrally based St George electorate since 1930 running, in various configurations, north to south and including the suburbs of Kingsgrove, Bexley and Kogarah. It is the identifiable centre of the St George district, incorporating St George Hospital, St George Bank headquarters, St George Football Club's home ground, and the vibrant shopping and civic areas of Bexley, Kingsgrove and Kogarah.

We believe the suburb of Hurstville should remain within the electorate, as King Georges Road is an identifiable physical line of division between the central and western St George electorates. With King Georges Road as the boundary, the entire suburb of Hurstville is located within the electorate of Kogarah.

Our suggestion is to keep King Georges Road as an identifiable divider between electorates in the St George district. The M5 is a relatively recent addition to the St George community (completed in 2001). There are connections across the motorway - both via bridge and subterranean tunnel - for local traffic and pedestrians. These connections easily unite the Beverly Hills and Kingsgrove communities, north and south of the motorway.

King Georges Road, by contrast, is a 100-year-old, six-lane highway that has bisected these communities for decades. The M5 is largely used by motorists attempting to travel to and from Western Sydney (there are only two exits from the motorway into the seat of Kogarah - Kingsgrove Road and King Georges Road), whereas King Georges Road has 78 entry and exit points as it travels between Oatley and Kogarah (43 on the Kogarah side, 35 in the Oatley division). It is the distribution point for thousands of residents in determining whether they travel to central St George or alternatively into western St George.

Once these residents are in their communities there is relatively little cross-over between the central (Kogarah Electorate) and western (Oatley Electorate) St George communities. This is demonstrated by the roughly equidistant school, church and civic locations on either side of King Georges Road, demonstrating each community's self-contained nature.

## EAST HILLS

We take the opportunity to make Marion Street a complete northern boundary for this district. Presently, the suburb of Georges Hall is split between East Hills and Bankstown. It is isolated from the rest of the seat as it is situated north of Bankstown airport. We unite Georges Hall in our proposed Villawood and thereby restore the Marion Street north western boundary which had existed until the 2007 election. At the eastern end we maintain Marion Street as a boundary, which has often been used as a boundary between the Federal Divisions of Banks and Blaxland. In support of our proposed arrangement:

1. Bankstown is already split with a number of notable local icons already in the East Hills Electorate, such as Bankstown Airport and Bankstown Hospital on the boundary.

2. People from the southern end of the East Hills electorate have a connection to central Bankstown as their local Hospital is Bankstown, Local CBD is Bankstown and the largest local Shopping mall is Bankstown Central.
3. Marion Street has been recognised as the boundary of East Hills and the Federal seat of Banks in the past.
4. It is more coherent to split Bankstown along Marion street as has been done in the past than to place suburbs north and west of Bankstown CBD in the electorate. These communities have little in common with the remainder of East Hills while southern Bankstown CBD suburbs have more of a connection.
5. Moving further North and West creates an island in Central Bankstown and runs the electorate of East Hills around it.

### *Education*

Georges Hall Primary is the local public school and Georges River Grammar (“GRG”) is a local private primary and secondary school. GRG draws students from all across the Canterbury - Bankstown LGA as a significant private school in the region. Most public-school students matriculate from Georges Hall Primary to Bass Hill High School which is in the Electorate of Bankstown. Students at St Mary’s Primary School continue their Catholic education at La Salle Catholic College in Bankstown.

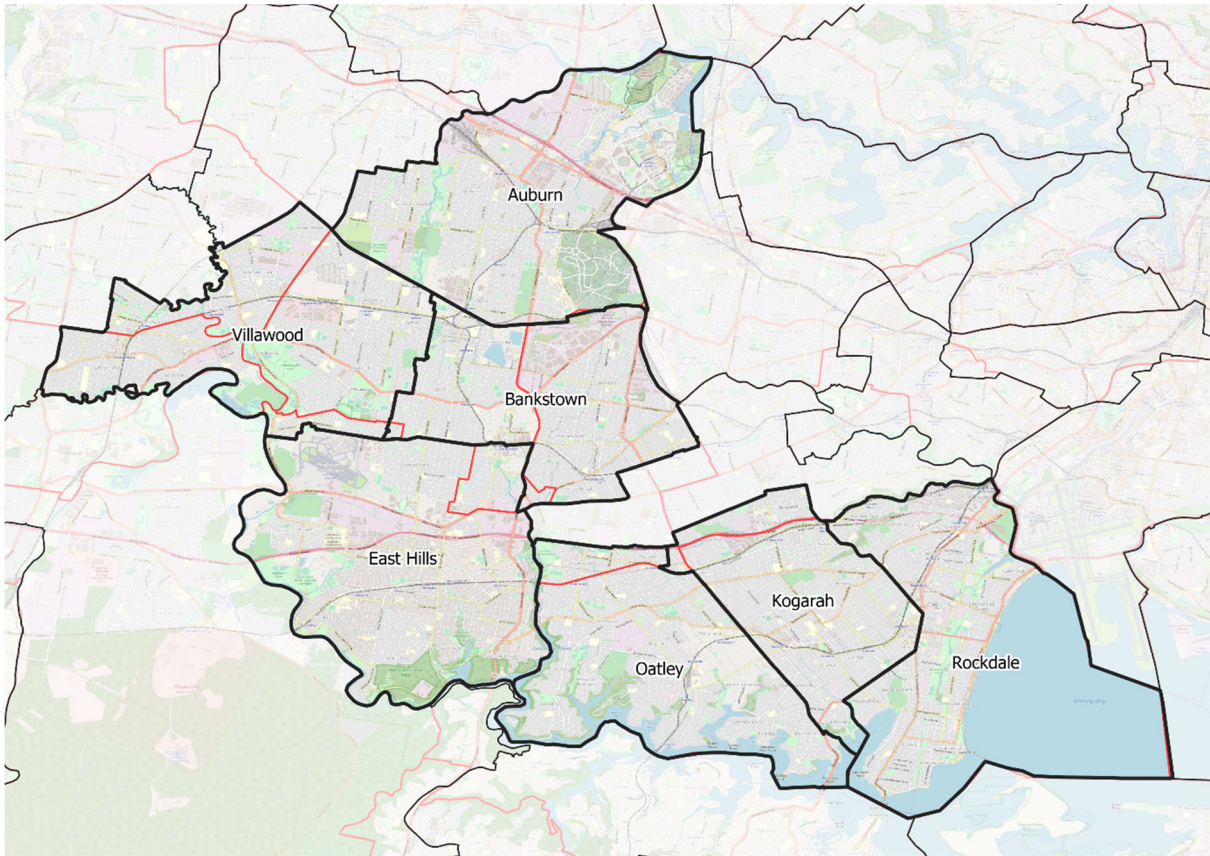
### *Public Transport*

The main public transport for residents of Georges Hall is the Bankstown Rail Line. Yagoona Station is a short walk for most residents in the area. That line is being converted to a Metro and there are plans for the new Metro to be extended through Georges Hall to Liverpool.

### *Religion & Community*

The Macedonian Orthodox community is a significant part of the Georges Hall and Yagoona population. They attend St Nicholas Orthodox Church at Bankstown. Bankstown City Lions Football Club (originally Yagoona Macedonia FC), draws most of its players from the Macedonian community in Georges Hall and Yagoona and the Club grounds at Jenson Park in Chester Hill act as the main gathering place for Macedonian Community Events.

## St George to Bankstown ALP Suggestion



### WESTERN SUBURBS

Western Suburbs	23/03/20 (Var)	17/04/23 (Var)
1. Blue Mountains	54 385(-4.9)	54 744 (-7.6)
2. Penrith	56 970(-0.4)	58 703 (-0.9)
3.Londonderry	67 090(17.3)	72 165 (21.8)
4.Mount Druitt	56 950(-0.4)	57 925 (-2.2)
5.Riverstone	63 379(10.8)	72 253 (22.0)
6.Blacktown	55 408(-3.1)	56 454 (-4.7)
7.Seven Hills	53 790(-6.0)	55 130 (-6.9)
8.Parramatta	57 894(1.2)	62 363 (5.3)
Totals	465 866 (14.6)	489 737 (26.7)

These districts are collectively more than a quarter of a quota over. We use the region's surplus to supplement districts on the North Shore and North Western Sydney, which combined is nearly a third of a quota short.

Via a transfer from Penrith, Blue Mountains becomes a district with the same boundaries as the Blue Mountains City Council. Penrith is compensated by the transfer of the entire suburb of Cambridge Park from Londonderry, which also loses the suburbs of Shanes Park and Marsden Park (which it gained at the last redistribution) to Mount Druitt. Mount Druitt is brought to quota by losing the entire suburbs of Colebee, Deans Park and Glendenning to Blacktown. We don't like breaching Mount Druitt's current Eastern Creek boundary but the numbers require the change. Shanes Park and Marsden Park are two very fast growing suburbs which can't be sent to the rapidly growing Riverstone district. We also note that the Federal Division of Chifley also completely surrounds Eastern Creek.

Riverstone is brought to quota by losing the entire suburb of Glenwood to Seven Hills. Seven Hills moves west to encompass parts of Blacktown east of Sunnyholt Road. The overall effect of the transfers to Seven Hills is that it is able to return the suburb of Winston Hills (which it only gained at the last redistribution) to Baulkham Hills. Seven Hills also loses the suburb of Northmead to Parramatta. Parramatta is then able to transfer Carlingford (most of which it also gained only at the last redistribution) to Baulkham Hills. Thereby, the shortfall is met for northern suburb districts.

What will be contested with our proposed arrangement is where the transfers of electors to northern Sydney districts should take place.

There is an overwhelming case for retaining Riverstone as a Blacktown-based district and for the transfer to come from Seven Hills and Parramatta, which as outlined above, are only returning suburbs added at the last redistribution.

## **Riverstone Seat**

### *Location:*

The seat of Riverstone is located entirely inside the Blacktown Council boundaries and is part of the North-West Growth Corridor (NWGC). The current northern border is Windsor Road.

A redistribution of the seats is essential due to the massive growth over the past eight years as well as the anticipated growth over the next 15 years.

### *Why should it stay within Blacktown City Council boundaries with the northern boundary of Windsor Road?*

Currently, the suburbs of Riverstone, Schofields, Stanhope Gardens, Glenwood and The Ponds are located in the Riverstone State Seat. Stanhope Gardens, the Ponds and Glenwood

suburbs have been substantially or completely developed. Areas along the new metro corridor, Schofields, the proposed new suburb of Nirimba and Riverstone are currently facing massive social and civil infrastructure issues.

The North-West Growth Corridor encompasses the council areas of Blacktown City, Hawkesbury City, Hills Shire and Penrith City Councils. The largest component of the development and population growth is in the Blacktown City area with anticipated growth in excess of 200,000 additional residents in the Blacktown City area (2011-2036) according to Department of Planning & Environment.

The core of the areas of the new Riverstone electorate ought to have Windsor Road as the northern boundary. The electorate should encompass Schofields, Riverstone, Nirimba and new areas along the metro corridor. This core area ought to remain as a one block so as to allow an effective local member to argue effectively for education, transport, healthcare and rezoning for the local area as it deals with population growth issues and redevelopment.

The Riverstone area needs a strong advocate with a clear focus on issues of local development, social infrastructure and civil infrastructure. These boundaries provide a clear voice and coordination with Blacktown Council in regards to issues facing the area. Having the Riverstone member straddled across two divergent councils (Hills and Blacktown) will impede the ability to appropriately address growth issues in both council areas.

Key issues currently in the electorate that must be addressed include:

- Proposed new Hospital for the NWGC which will be located in the Blacktown City area
- Massive Road works required to sustain the population growth including Bandon Rd bypass (linking Richmond Rd to Windsor Rd); and Riverstone Overpass.
- proposed new Schools
- Territory education opportunities such as TAFE and university currently in the area
- NWGC is split into smaller sections which are based on Council boundaries. Riverstone CBD Precinct; Riverstone West Industrial Precinct; and Marsden Park East Precinct are all the major precinct plans that are within the Blacktown Council area and within the core area of the Riverstone Seat.

It is essential that one Member of Parliament is fully aware of development issues facing this area, especially the need for social and civil infrastructure in such a fast growing area. The advocacy and planning work to enable this to happen is better facilitated with one State Member. It will achieve a more coordinated approach for a sustainable future.

Windsor Road provides a clear boundary which is also used for the federal electorate of Greenway and Council boundaries. It makes sense to use this same boundary for the separation of State seats. It maintains a boundary which has existed since Riverstone was established in 1981.

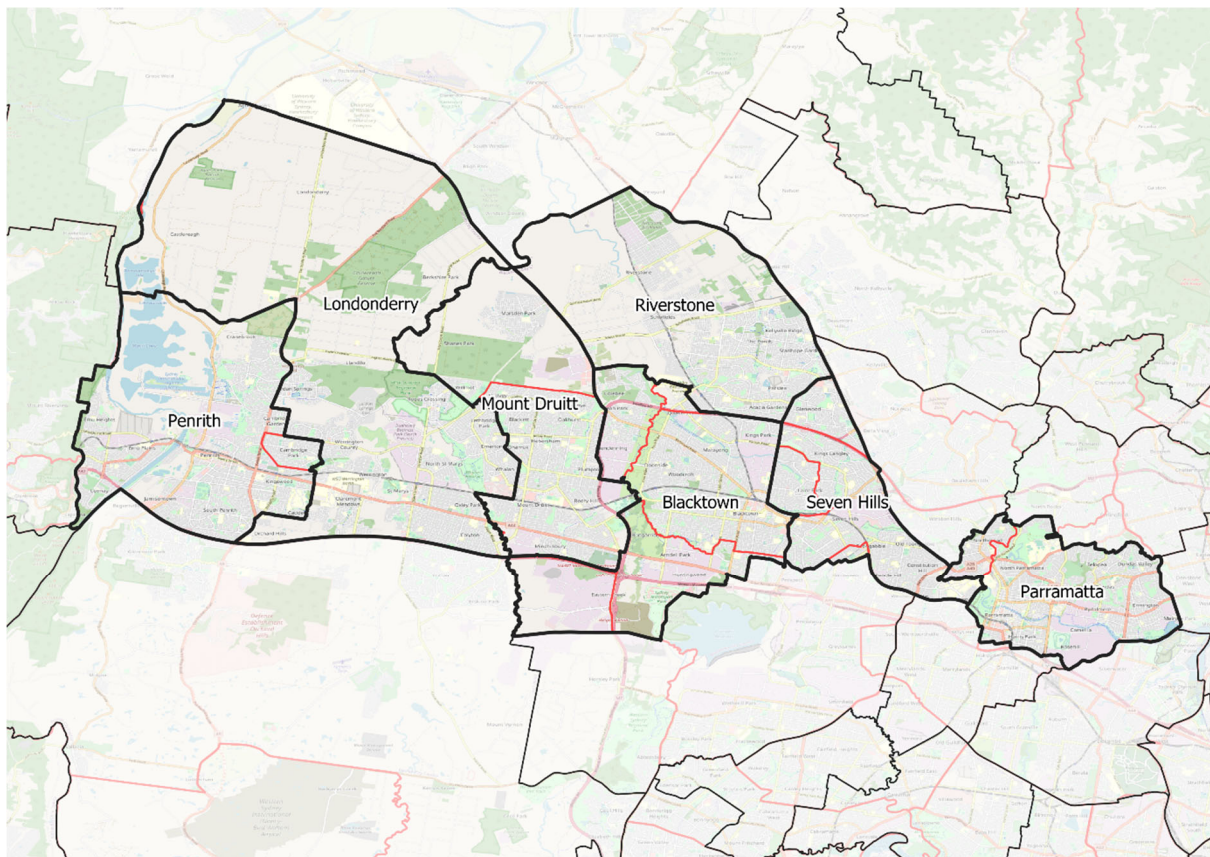
Finally, with respect to the suburb of Rouse Hill, which straddles both sides of Windsor Rd, we ask the members of the Redistribution panel to note that on the Hills side, the suburb



has been well established for more than 20 years and relates well with Castle Hill. At the Blacktown end, the suburb, whilst much newer, strongly relates to surrounding suburbs within Blacktown. The main shopping centre is at Stanhope Gardens. Further, the Blacktown end of Rouse Hill is part of the catchment of schools concentrated in The Ponds.

There is simply no cause to change the Windsor Road boundary, especially considering that the shortage of electors further north can be met by giving back suburbs only added to both Seven Hills and Parramatta at the last redistribution.

### Western Sydney ALP Suggestion



### South West Sydney

	23/03/20 (Var)	17/04/23 (Var)
<b>South West Sydney</b>		
<b>1. Mulgoa</b>	<b>58 802(2.8)</b>	<b>60 860 (2.7)</b>
<b>2. Prospect</b>	<b>54 810(-4.2)</b>	<b>55 146 (-6.9)</b>
<b>3.Fairfield</b>	<b>54 028(-5.5)</b>	<b>54 492 (-8.0)</b>
<b>4. Granville</b>	<b>53 986(-5.6)</b>	<b>56 842 (-4.1)</b>
<b>5.Cabramatta</b>	<b>55 194(-3.5)</b>	<b>54 922 (-7.3)</b>
<b>6.Liverpool</b>	<b>58 340(2.0)</b>	<b>60 083 (1.4)</b>

<b>7.Macquarie Fields</b>	<b>64 849(13.4)</b>	<b>71 093 (20.0)</b>
<b>8.Campbelltown</b>	<b>54 810(-4.2)</b>	<b>56 136 (-5.3)</b>
<b>9.Camden</b>	<b>75 379(31.8)</b>	<b>90 387 (52.6)</b>
<b>10.Wollondilly</b>	<b>58 065(1.5)</b>	<b>60 869 (2.7)</b>
<b>Totals</b>	<b>588 263(28.6)</b>	<b>620 820 (47.9)</b>

The big issue here is how to deal with the rapid growth within Camden and to a lesser extent, Macquarie Fields. Given that at the projected time, these two districts are 72% above a quota, it makes sense to replace the abolished Cabramatta with a district here.

However, other districts in the region are under quota and adjustments are also required at the more northern end of the region.

The necessary more northern district seat adjustments are facilitated by transferring Camden's Liverpool Council area to Mulgoa from Camden.

Moreover, the seats of Holsworthy and Liverpool are reconfigured such that Holsworthy, which already contains more than 3000 electors from the suburb of Liverpool, is able to gain the entire suburb plus Warwick Farm. The resulting arrangement would be a western electorate containing most of the current electors within the seat of Liverpool that would be named Green Valley. That district is compensated for the loss of its Liverpool end by the infusion of electors from Bonnyrigg and Bonnyrigg Heights, from the abolished district of Cabramatta.

The resulting arrangement means that Holsworthy loses those suburbs from Casula to Prestons which lie south and south west of Liverpool itself. These electors are enough that when combined with Camden and Macquarie Fields surplus to form a new seat, Minto at the southern end and western ends of respectively, the districts of Macquarie Fields and Campbelltown. It should be noted that until the last redistribution, the fast growing suburbs of Camden were combined with the adjoining slow growth suburbs of Raby, Claymore and Eagle Vale. Then Camden LGA didn't contain enough electors to constitute a district. Today, Camden contains too many electors and the arrangement we propose is similar to what you find in the Federal Division of Macarthur.

But why put Liverpool in Holsworthy, (and rename it) and why make the current Liverpool a Green Valley District?

### *Western Sydney Aerotropolis*

The Western edge of the proposed Green Valley electorate is closer in distance to the proposed Western Sydney Airport and associated Aerotropolis than it is to the Liverpool CBD. The Aerotropolis has been set aside as central point of development for the Western Sydney Parkland City as prescribed in the Greater Sydney Commission Plan. (see <https://www.greater.sydney/metropolis-of-three-cities>). Over time, the majority of jobs in the region will be attached to the Airport and the surrounding land area suggesting



that employment and transport connections for residents of the proposed Green Valley electorate will be westwards not east towards the Liverpool CBD.

Also, Green Valley Plaza is the significant shopping centre to the west of Liverpool.

#### *Travel/Transport Connections*

The Leppington line is one of the busiest and popular lines in the Sydney train network. Prior to COVID-19, data from Transport NSW suggests that some 2.5 to 3 million trips were made on the line. The attractiveness of the line is due to its quick service to the CBD offering shorter travel times and more limited stops to the CBD. It also is more easily accessible for workers and travellers to Sydney Airport.

At the western edge of the proposed Green Valley electorate, it is more feasible to travel into the CBD from Leppington Station than from Liverpool CBD. Access is better due to greater parking options; bus connections etc and travel times are shorter.

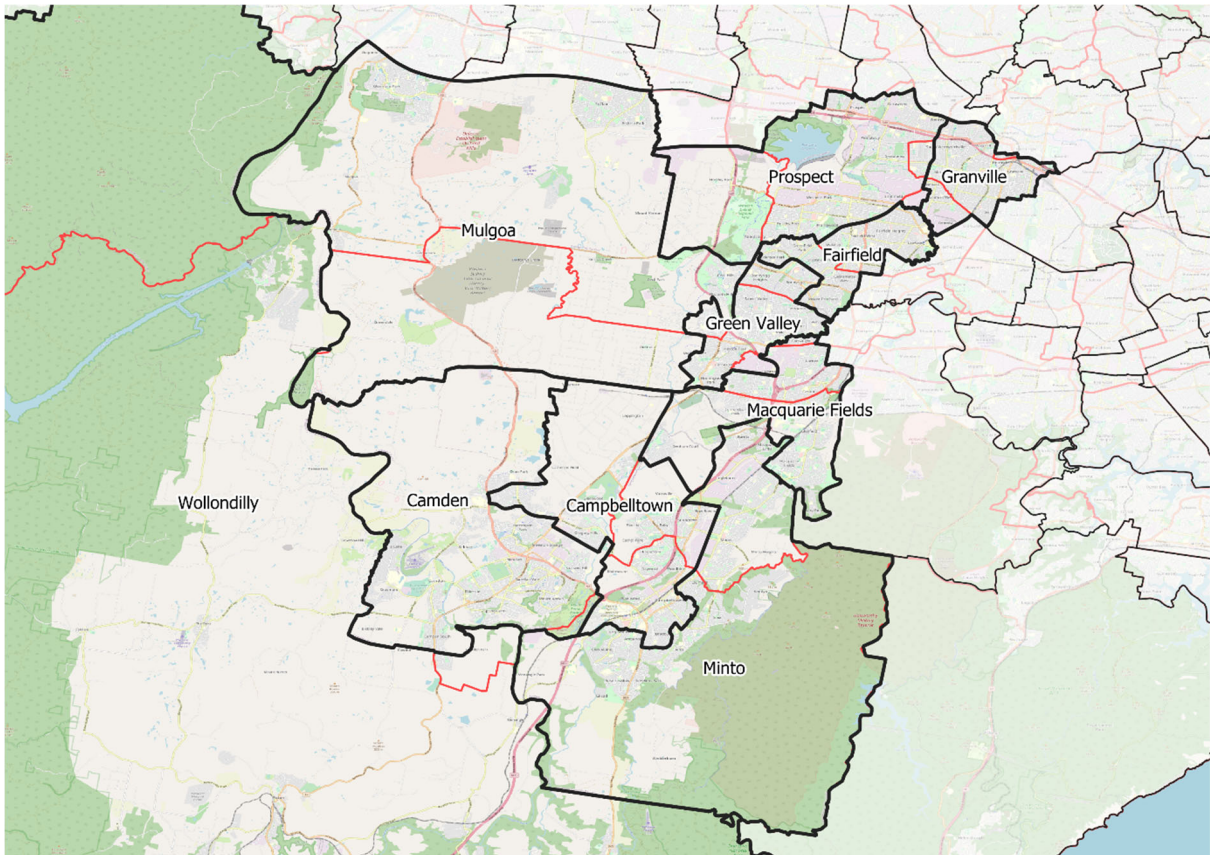
#### *Liverpool CBD*

The central heart of the proposed Liverpool electorate is Liverpool CBD, which is home to Liverpool Hospital and campuses of the University of Western Sydney and University of Wollongong. It is also home to a Westfields and is located within close proximity to Warwick Farm Racecourse and the William Inglis Hotel and Sales Facility. The area is characterised by high rise residential development consistent with the proposal for Liverpool under the Greater Sydney Commission.

The proposed seat of Liverpool would have the CBD at the heart of the seat and its major centre. The proposed Liverpool Health and Education Precinct, a proposal from the NSW Government, and which includes Liverpool Hospital and the Ingham Research Centre would be the foci of the area. The seat also follows the natural water courses of the Georges River and the lakes area of Chipping Norton.

Additionally, the Moorebank Industrial precinct is a major employer of residents of both Liverpool and Warwick Farm.

## South West Sydney ALP Suggestion



## NORTHERN SYDNEY

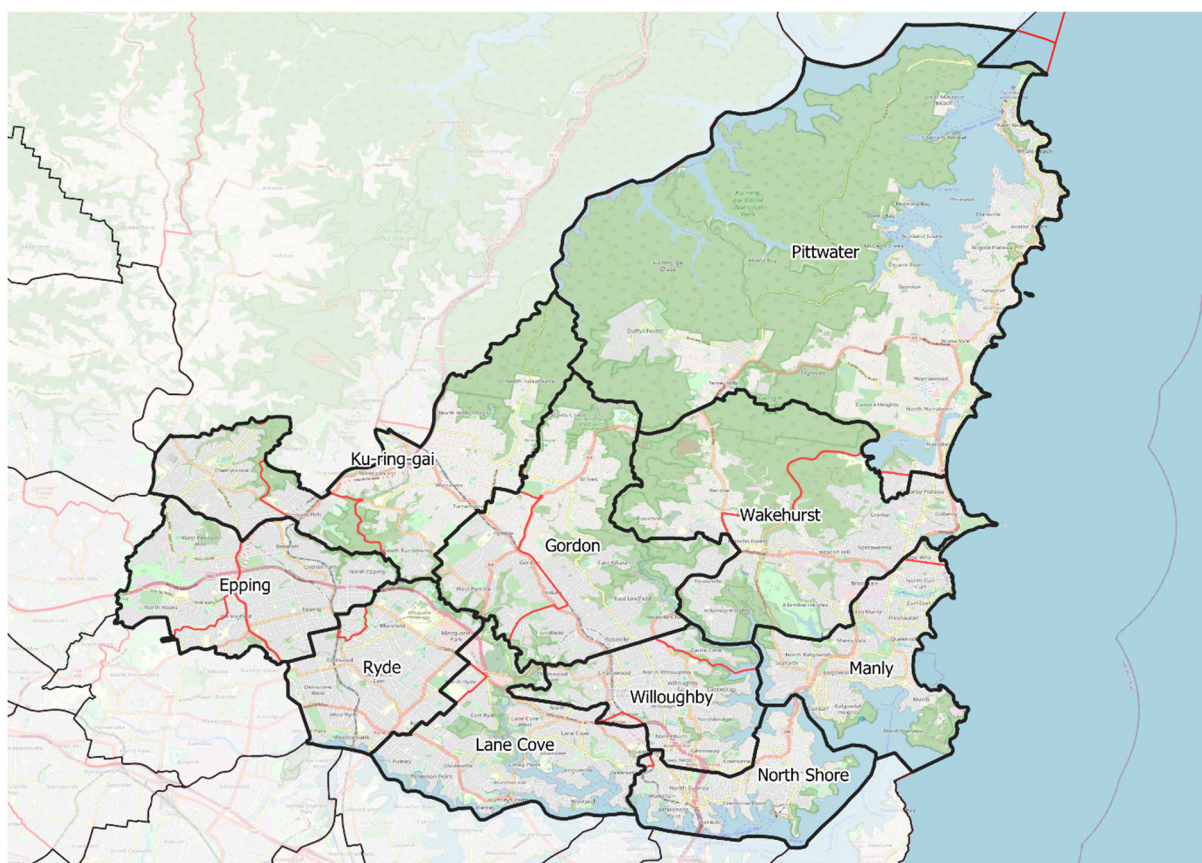
North Shore	23/03/20 (Var)	17/04/23 (Var)
1. Pittwater	56 327(-1.5)	56 914(-3.9)
2. Wakehurst	56 227(-1.7)	56 577 (-4.5)
3. Manly	55 930(-2.2)	56 715 (-4.3)
4. Davidson	55 128(-3.6)	55 025 (-7.1)
5. North Shore	55 380(-3.2)	57 575 (-2.8)
6. Willoughby	54 933(-4.0)	55 511 (-6.3)
7. Lane Cove	58 499(2.3)	59 857 (1.0)
8. Ku Ring Gai	55 296(-3.3)	55 599 (-6.2)
9. Ryde	56 313(-1.5)	58 285 (-1.6)
10. Epping	55 243(-3.4)	56 568 (-4.5)
<b>Totals</b>	<b>659 276 (-22.1)</b>	<b>568 626 (-40.2)</b>

**TOTAL**

**55 714(-2.6)**

**58 554(-1.2)**

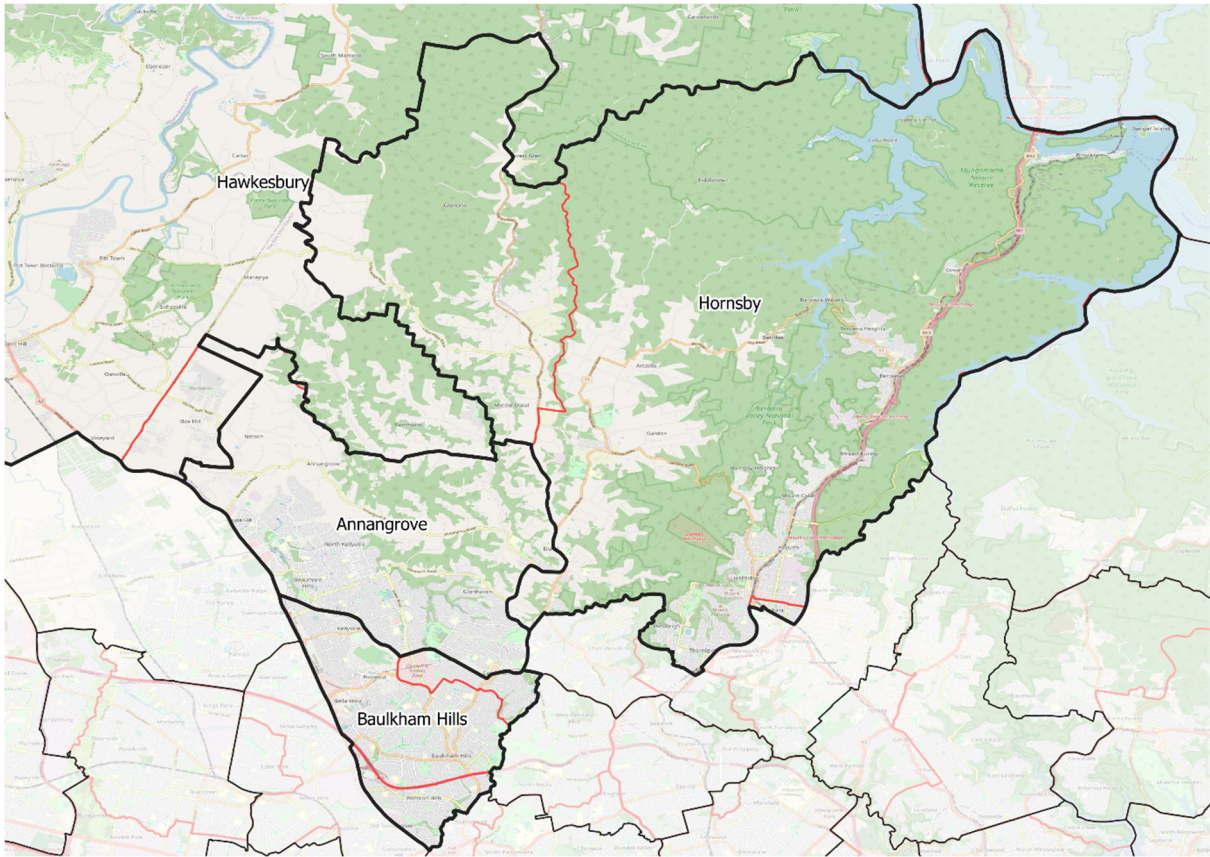
## Northern Sydney ALP Suggestion



North West Sydney	23/03/20 (Var)	17/04/23 (Var)
<b>1. Castle Hill</b>	<b>61 104(6.8)</b>	<b>68 782 (16.1)</b>
<b>2. Baulkham Hills</b>	<b>56 371(-1.4)</b>	<b>58 554 (-1.2)</b>
<b>3.Hornsby</b>	<b>56 016(-2.1)</b>	<b>56 954 (-3.9)</b>
<b>4.Hawkesbury</b>	<b>55 910(-2.2)</b>	<b>57 177 (-3.5)</b>
<b>Totals</b>	<b>229 401 (1.1)</b>	<b>241 467 (7.6)</b>



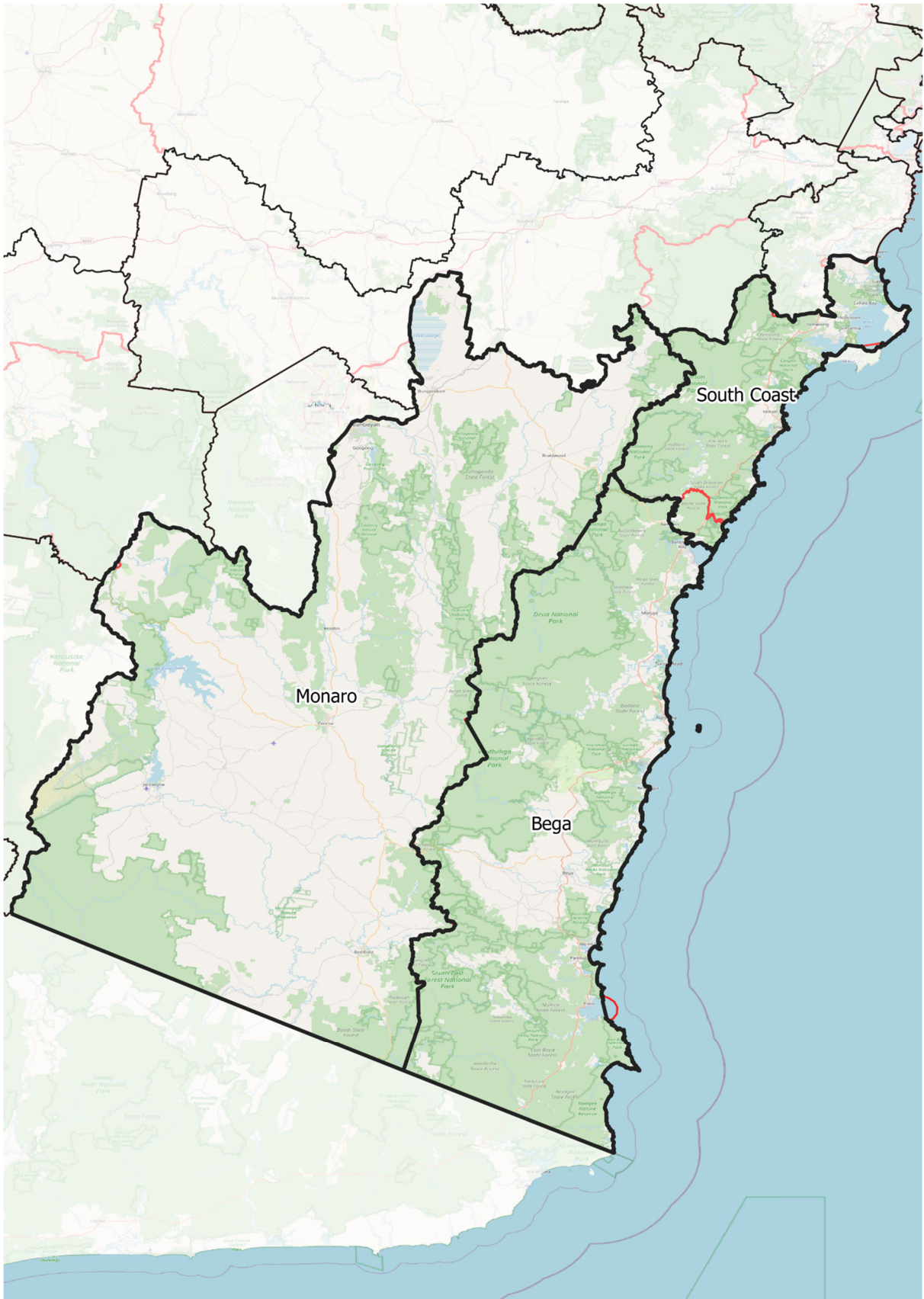
## North West Sydney ALP Suggestion



## SOUTH COAST TO SHIRE

South East NSW	23/03/20 (Var)	17/04/23 (Var)
<b>1. South Coast</b>	<b>57 524(0.6)</b>	<b>60 653 (2.4)</b>
<b>2. Bega</b>	<b>58 444(2.2)</b>	<b>61 214 (3.3)</b>
<b>3.Monaro</b>	<b>57 772(1.0)</b>	<b>60 385 (1.9)</b>
<b>Totals</b>	<b>173 740 (3.8)</b>	<b>182 252 (7.6)</b>

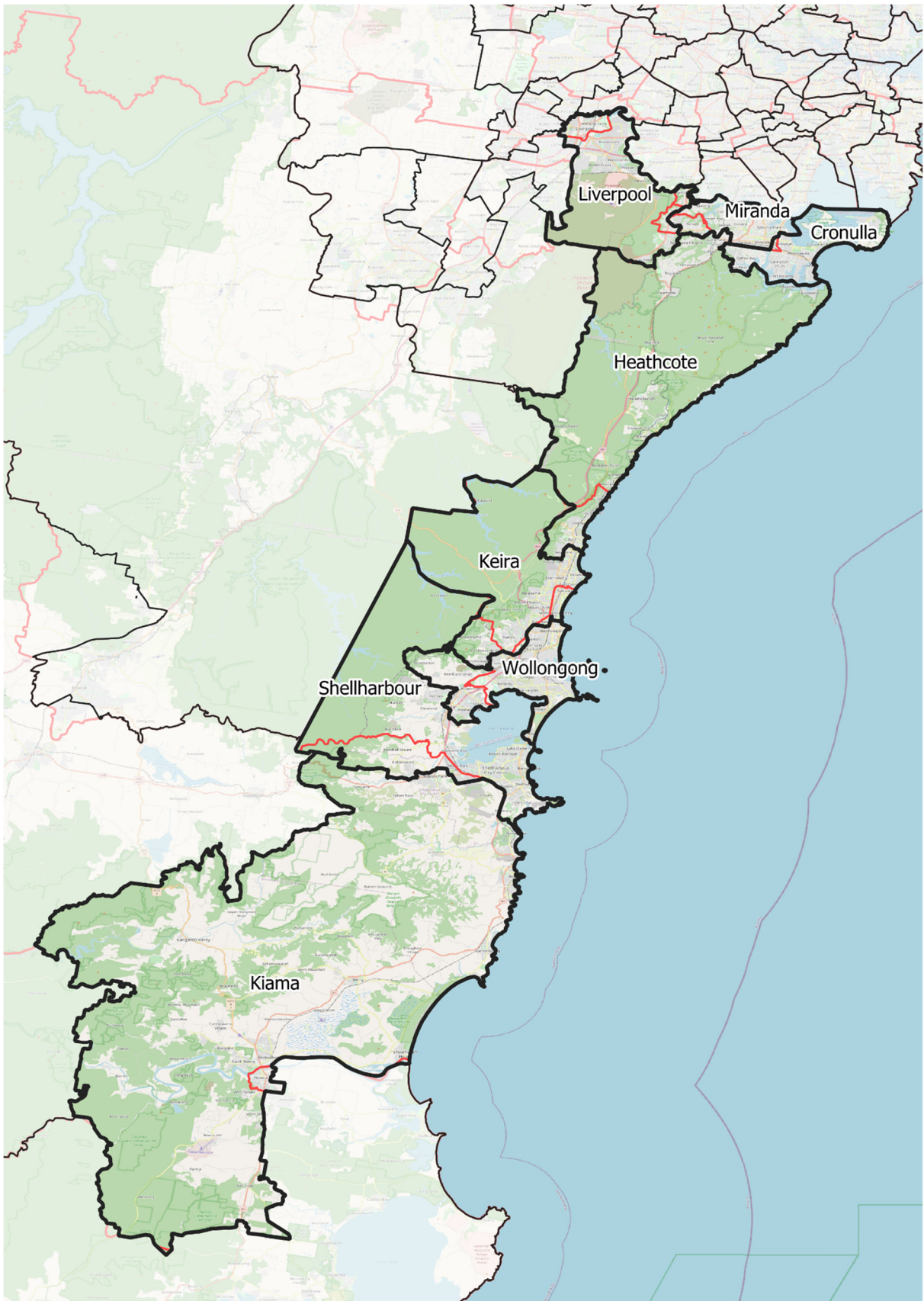
# South East NSW ALP Suggestion



<b>Cronulla-Illawarra</b>	<b>23/03/20 (Var)</b>	<b>17/04/23 (Var)</b>
<b>1. Cronulla</b>	<b>57 511(0.6)</b>	<b>58 492 (-1.3)</b>
<b>2. Miranda</b>	<b>55 708(-2.6)</b>	<b>56 723 (-4.3)</b>
<b>3.Holsworthy</b>	<b>57 228(0.1)</b>	<b>57 612 (-2.8)</b>
<b>4.Heathcote</b>	<b>56 432(-1.3)</b>	<b>57 027 (-3.7)</b>
<b>5.Keira</b>	<b>59 068(3.3)</b>	<b>59 335 (0.2)</b>
<b>6.Wollongong</b>	<b>60 693(6.1)</b>	<b>62 274 (5.1)</b>
<b>7.Shellharbour</b>	<b>63 162(10.4)</b>	<b>66 027 (11.5)</b>
<b>8.Kiama</b>	<b>56 298(-1.6)</b>	<b>59 363 (0.2)</b>
<b>Totals</b>	<b>466 100 (15.0)</b>	<b>476 853 (4.9)</b>



# Cronulla – Illawarra ALP Suggestion



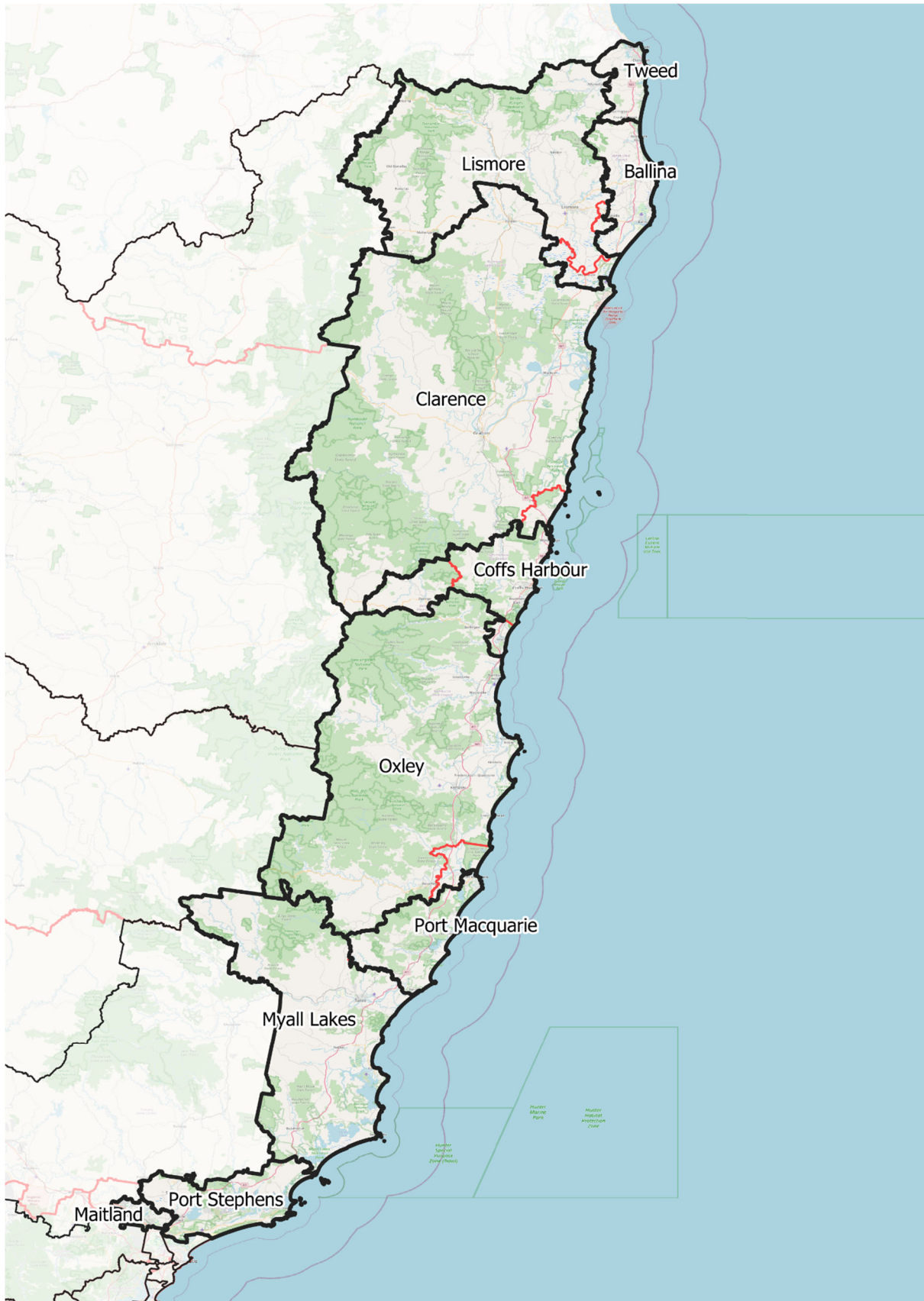
The arrangements for this area are relatively straight forward. Monaro's small surplus is sent to Goulburn. Otherwise an escalating surplus develops from Bega north until Heathcote. It's worth noting that unlike the arrangement following the 2013 redistribution, Miranda, under the ALP suggestion is contiguous and able to be travelled from east to west without driving through another electorate. The same suggested arrangement would also pertain to the suggested district of Kiama.

#### CENTRAL COAST/HUNTER/NORTH COAST

North Coast	23/03/20 (Var)	17/04/23 (Var)
1. Tweed	57 412(0.4)	59 202 (-0.1)
2. Lismore	55 989(-2.1)	57 759 (-2.5)
3. Ballina	59 417(3.9)	61 991 (4.6)
4. Clarence	56 937(-0.5)	59 193 (-0.1)
5. Coffs Harbour	55 449(-3.1)	57 541 (-2.9)
6. Oxley	57 268(0.1)	59 209 (-0.1)
7. Port Macquarie	60 580(5.9)	63 710 (7.5)
8. Myall Lakes	57 649(0.8)	60 292 (1.8)
9. Port Stephens	56 892(-0.5)	58 970 (-0.5)
10. Maitland	61 476(7.5)	65 682 (10.9)
<b>Totals</b>	<b>579 069 (12.5)</b>	<b>603 549 (18.8)</b>

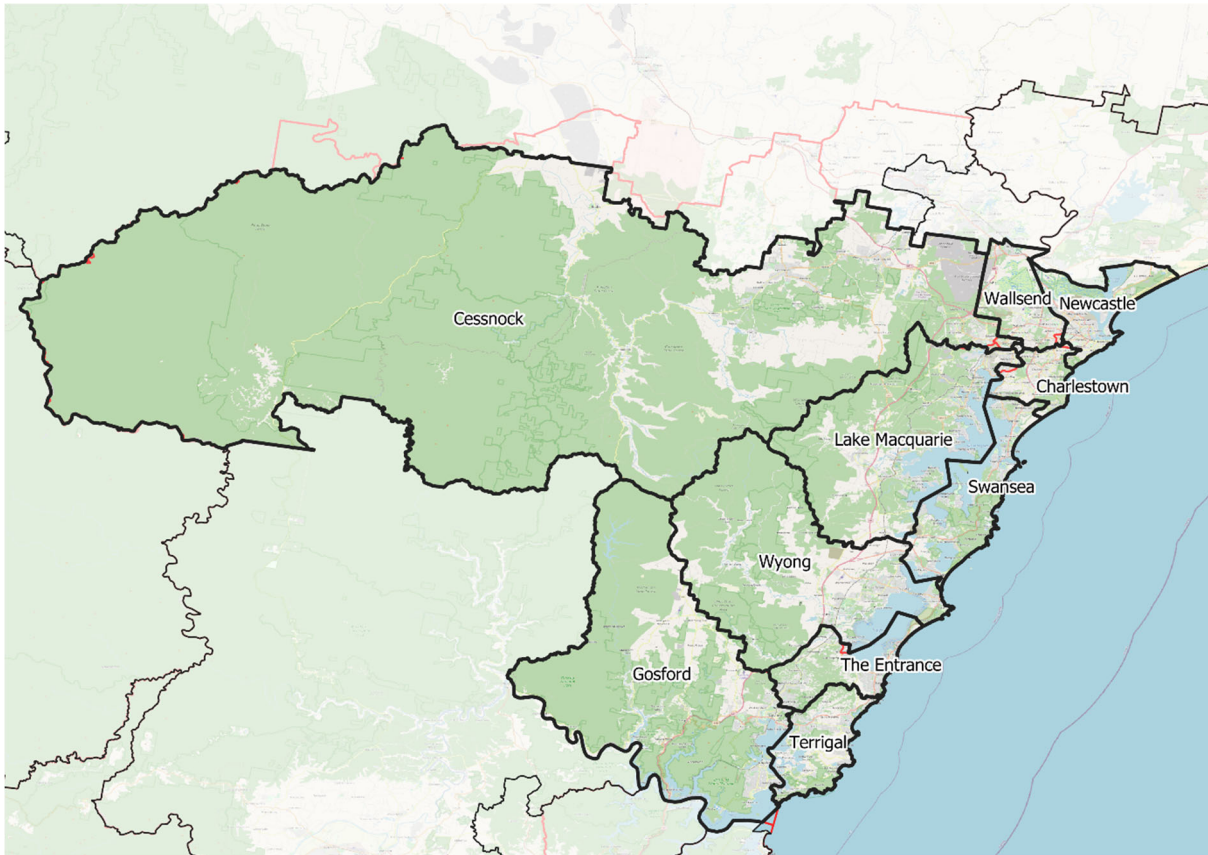


# North Coast ALP Suggestion



Central Coast-Hunter	23/03/20 (Var)	17/04/23 (Var)
1. Gosford	56 715(-0.8)	58 949 (-0.5)
2. Terrigal	57 511(0.6)	58 864 (-0.6)
3.The Entrance	56 026(-2.0)	57 793 (-2.5)
4.Wyong	57 913(1.3)	61 379 (3.6)
5.Lake Macquarie	58 541(2.4)	62 018 (4.7)
6.Swansea	56 603(-1.0)	58 074 (-2.0)
7.Charlestown	55 665(-2.7)	56 401 (-4.8)
8.Cessnock	59 513(4.1)	63 230 (6.7)
9.Wallsend	59 509(4.1)	61 033 (3.0)
10.Newcastle	59 435(3.9)	61 920 (4.5)
<b>Totals</b>	<b>577 431 (9.6)</b>	<b>599 661 (12.2)</b>

### Central Coast – Hunter ALP Suggestion



We deal with these two regions together. This is mainly because most change is relatively minor when compared with other areas. Also, the districts of Maitland and Cessnock represent the surplus of both regions, once Tenterfield is returned from Lismore to the district of Northern Tablelands.

We begin with the proposed transfer of Tenterfield from Lismore to Northern Tablelands. Last time, the Commissioners had a one off chance to unite several Shires on the North Coast. It was a one-time solution but it came at the expense of taking a coastal district, Lismore right to the other side of the Great Dividing Range. This was an outcome unprecedented in modern times both at the State and Federal levels. Furthermore, by any measure, this is contrary to the community of interests criteria of the Electoral Act.

This time, Northern Tablelands is short of numbers and these are best supplied by the inclusion of Tenterfield.

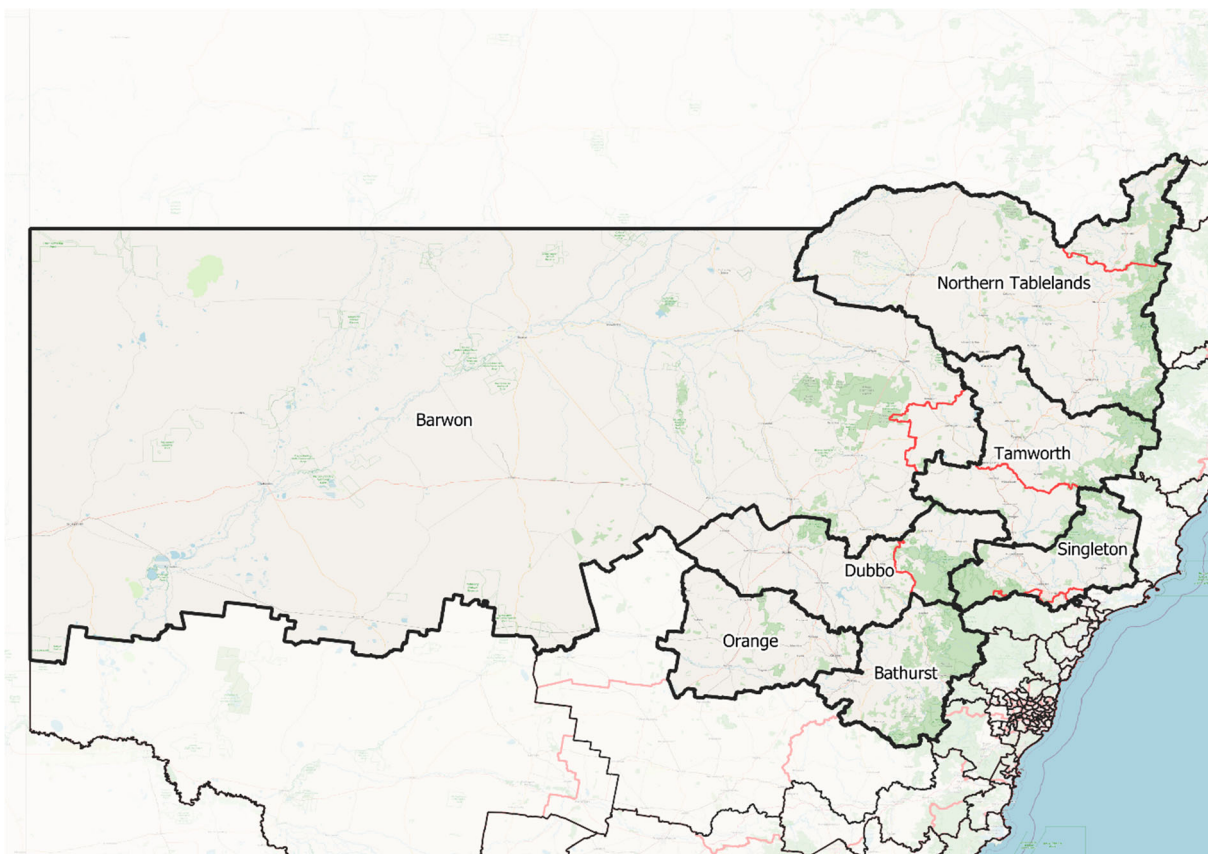
Coraki and Woodburn relate very much to Lismore. The Lismore Electorate takes in some of East Coraki. The inclusion of these two towns into the electorate of Lismore would bring it into the orbit Richmond Valley Council. This makes sense given the shared borders of Richmond Valley Council and Lismore City Council and the shared infrastructure they maintain. People in Coraki relate very much to Lismore, for health, commerce, food, and recreation.

Wollongbar residents also relate to Lismore City. It is the next main town adjacent to Lismore and its transfer from Ballina contracts that district to being within quota. Lismore TAFE has two key campuses one in Lismore CBD and a newer one in Wollongbar on the plateau.

## INLAND NSW

Central and N W NSW	23/03/20 (Var)	17/04/23 (Var)
1. Upper Hunter	55 666(-2.7)	57 488 (-3.0)
2. Tamworth	56 579(-1.1)	58 713 (-0.9)
3.Northern Tablelands	54 988(-3.9)	55 764 (-5.9)
4.Barwon	54 093(-5.4)	54 830 (-7.5)
5.Dubbo	55 872(-2.3)	57 360 (-3.2)
6.Bathurst	57 031(-0.3)	59 083 (-0.3)
7.Orange	56 894(-0.5)	58 952 (-0.5)
Totals	391 103 (-16.2)	402 190 (-21.1)

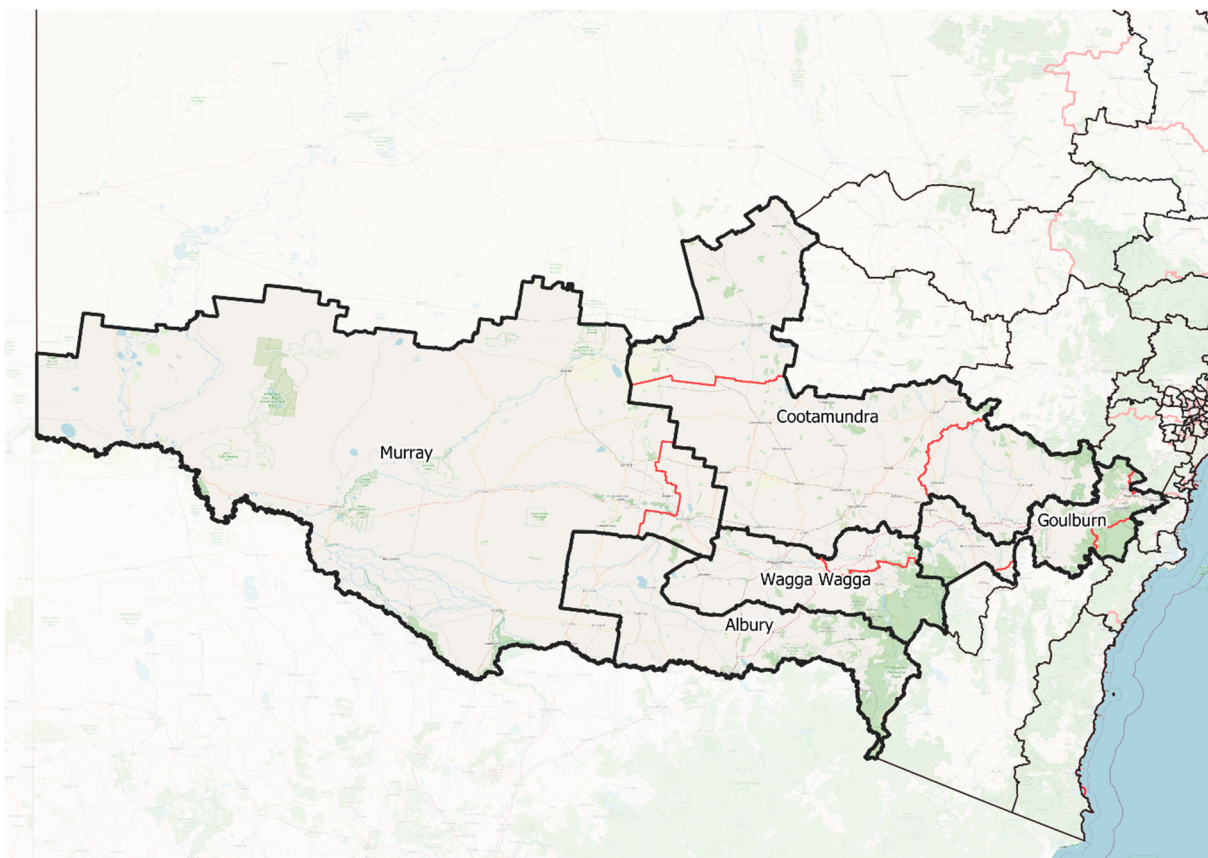
Central and North West NSW ALP Suggestion





Southern Inland	23/03/20 (Var)	17/04/23 (Var)
1. Murray	55 642(-2.7)	55 921 (-5.6)
2. Wagga Wagga	55 534(-2.9)	57 344 (-3.2)
3. Albury	58 029(1.5)	60 035 (1.3)
4. Cootamundra	53 064(-7.2)	53 557 (-9.6)
5. Goulburn	58 084(1.6)	60 287 (1.8)
<b>Totals</b>	<b>280 353 (-9.8)</b>	<b>287 144 (-15.3)</b>

#### Southern Inland ALP Suggestion



The twelve inland country districts are at the projected time 36.4% below quota. Three districts, Bathurst, Orange and Albury require no change and two other districts need little change. That means the overall shortage of numbers in these seats is concentrated. As earlier stated, most of the overall shortage from these seats is satisfied by Upper Hunter moving east to include the western parts of the districts of Cessnock and Maitland and also, but to a lesser extent, Goulburn supplying numbers to Cootamundra.

Significant but logical changes include uniting the MIA towns by transferring Narrandera from Cootamundra into Murray; by moving Gundagai from Cootamundra into Wagga Wagga. Cootamundra is compensated by taking most of both Upper Lachlan Shire from Goulburn and all of Lachlan Shire from Barwon. As most of the excess from Upper Hunter's gain will go to Tamworth, it loses Gunnedah to Barwon.

ALP suggested transfers of electors between electoral districts

Q	57 193	59 244
INNER 2PP	23/03/20 (Var)	17/04/23 (Var)
1. Vacluse	56 046(-2.0)	57 445 (-3.0)
2. Coogee	54 810(-4.2)	55 467 (-6.4)
3.Maroubra	57 064(-0.2)	57 734 (-2.6)
4.Heffron	61 546(7.6)	67 334 (13.7)
5.Sydney	55 296(-3.3)	56 716 (-4.3)
6.Newtown	56 338(-1.5)	56 886(-4.0)
7.Summer Hill	57 190(-)	59 503 (0.4)
8.Balmain	57 805(1.1)	59 054 (-0.3)
9.Drummoyne	54 154(-5.3)	55 307 (-6.7)
10.Strathfield	53 950(-5.7)	55 735 (-5.9)
11.Canterbury	57 473(0.5)	58 536 (-1.2)
<b>Totals</b>	<b>621 672(-13.0)</b>	<b>639 717 (-20.2)</b>

	<u>23/03/20</u>	<u>17/04/23</u>
<b>1. VAUCLUSE</b>	<b>56 046(-2.0)</b>	<b>57 445(-3.0)</b>
Plus part SA2 Woollahra (Its share of suburb of Woollahra)		
Ex Sydney SA1's 1134701-3;12-13	+1 611	+1 652
Plus part SA2 Double Bay-Bellevue Hill (Its share of suburb of Edgecliff)		
Ex Sydney SA1's 1134310;26-28	+1 011	+1 031
<b>TOTAL</b>	<b>58 668(2.6)</b>	<b>60 128(1.5)</b>

<b>2. COOGEE</b>	<b>54 810(-4.2)</b>	<b>55 467(-6.4)</b>
Less part SA2 Coogee-Clovelly (part South Coogee)		
To Maroubra SA1's 1134804;48	-707	-697
Less part SA2 Maroubra North		
SA1 1156619 To Maroubra	-22	-22
Plus part SA2 Kensington (East of Anzac Pde)		
Ex Heffron SA1's 1156403;8;11-12;14;18	+2 114	+2 130
Plus part SA2 Randwick South (Racecourse)		
Ex Heffron SA1 1157028	+4	+4
Plus part SA2 Kingsford (East of Anzac Pde plus on the western side of Anzac Pde, that part east of Leonard Ave and south of Barker St)		
Ex Heffron SA1's 1156501-4;6;8-9;13-16;18-20;22-24;32	+3 015	+2 943
<b>TOTAL</b>	<b>59 214(3.5)</b>	<b>59 825(1.0)</b>

<b>3. MAROUBRA</b>	<b>57 064(-0.2)</b>	<b>57 734(-2.6)</b>
Plus part SA2 Maroubra North		
SA1 1156619 To Maroubra	+22	+22
Plus part SA2 Coogee-Clovelly (part South Coogee)		
Ex Coogee SA1's 1134804;48	+707	+697
<b>TOTAL</b>	<b>57 793(1.0)</b>	<b>58 453(-1.3)</b>

<b>4. HEFFRON</b>	<b>61 546(7.6)</b>	<b>67 334(13.7)</b>
<b>Less part SA2 Kensington (East of Anzac Pde)</b>		
<b>To Coogee SA1's 1156403;8;11-12;14;18</b>	<b>-2 114</b>	<b>-2 130</b>
<b>Less part SA2 Randwick South (Racecourse)</b>		
<b>To Coogee SA1 1157028</b>	<b>-4</b>	<b>-4</b>
<b>Less part SA2 Kingsford (East of Anzac Pde plus on the western side of Anzac Pde, that part east of Leonard Ave and south of Barker St)</b>		
<b>To Coogee SA1's 1156501-4;6;8-9;13-16;18-20;22-24;32</b>	<b>-3 015</b>	<b>-2 943</b>
<b>Less part SA2 Paddington-Moore Park (Its share)</b>		
<b>To Sydney SA1's 1134514-15;23-26;32;37</b>	<b>-1 621</b>	<b>-1 682</b>
<b>Less SA2 Centennial Park</b>		
<b>To Sydney SA1 1134201</b>	<b>0</b>	<b>0</b>
<b>Less part SA2 Erskville-Alexandria (Its share of the suburb of Erskineville and part suburb of Alexandria) SA1's 1133001;3-5;7-8;21;31-33;36-37;41</b>		
	<b>-4 664</b>	<b>-4 961</b>
<b>(North west of Sydney Park Rd to Mitchell Rd; west of except for that part bounded by Copeland St, Newtown St and Renwick St)</b>		
<b>To Newtown</b>		
<b>Plus part SA2 Waterloo-Beaconsfield (Its share)</b>		
<b>Ex Newtown SA1's 1133838-40</b>	<b>+1 043</b>	<b>+1 163</b>
<b>Plus part SA2 Erskville-Alexandria (Its share)</b>		
<b>Ex Newtown SA1 1133009</b>	<b>+433</b>	<b>+461</b>
<b>TOTAL</b>	<b>51 604(-9.8)</b>	<b>57 238(-3.3)</b>



<b>5. SYDNEY</b>	<b>55 296(-3.3)</b>	<b>56 716(-4.3)</b>
<b>Less part SA2 Woollahra (Its share of suburb of Woollahra)</b>		
<b>To Vaocluse SA1's 1134701-3;12-13</b>	<b>-1 611</b>	<b>-1 652</b>
<b>Less part SA2 Double Bay-Bellevue Hill (Its share of suburb of Edgecliff)</b>		
<b>To Vaocluse SA1's 1134310;26-28</b>	<b>-1 011</b>	<b>-1 031</b>
<b>Plus part SA2 Paddington-Moore Park (Its share)</b>		
<b>Ex Heffron SA1's 1134514-15;23-26;32;37</b>	<b>+1 621</b>	<b>+1 682</b>
<b>Plus SA2 Centennial Park</b>		
<b>Ex Heffron SA1 1134201</b>	<b>0</b>	<b>0</b>
<b>Plus part SA2 Surry Hills (Part suburb of Surry Hills east of Elizabeth St)</b>		
<b>Ex Newtown SA1's 1133602;4-7;9;26;28-32;34-38</b>	<b>+5 225</b>	<b>+5 359</b>
<b>TOTAL</b>	<b>59 520(4.1)</b>	<b>61 074(3.1)</b>

<b>6. NEWTOWN</b>	<b>56 338(-1.5)</b>	<b>56 886(-4.0)</b>
<b>Less part SA2 Surry Hills (Part suburb of Surry Hills east of Elizabeth St)</b>		
<b>To Sydney SA1's 1133602;4-7;9;26;28-32;34-38</b>	<b>-5 225</b>	<b>-5 359</b>
<b>Less part SA2 Waterloo-Beaconsfield (Its share)</b>		
<b>To Heffron SA1's 1133838-40</b>	<b>-1 043</b>	<b>-1 163</b>
<b>Less part SA2 Erskinville-Alexandria (Its share)</b>		
<b>To Heffron SA1 1133009</b>	<b>-433</b>	<b>-461</b>
<b>Less part SA2 Erskinville-Alexandria (Its share of the suburb of Erskineville and part suburb of Alexandria) SA1's 1133001;3-5;7-8;21;31-33;36-37;41</b>	<b>+4 664</b>	<b>+4 961</b>
<b>(North west of Sydney Park Rd to Mitchell Rd; west of except for that part bounded by Copeland St, Newtown St and Renwick St)</b>		
<b>Plus part SA2 Dulwich Hill-Lewisham (Balance of Lewisham)</b>		
<b>Ex Summer Hill SA1's 1139410-11;20-23</b>	<b>+2 523</b>	<b>+2 869</b>
<b>Plus part SA2 Petersham-Stanmore (Balance of Petersham)</b>		
<b>Ex Summer Hill SA1's 1132701-5;28</b>	<b>+1 553</b>	<b>+1 573</b>
<b>TOTAL</b>	<b>58 377(2.0)</b>	<b>59 306(0.1)</b>

<b>7. SUMMER HILL (Rename Canterbury)</b>	<b>57 190(-)</b>	<b>59 503(0.4)</b>
Less part SA2 Dulwich Hill-Lewisham (Balance of Lewisham)		
<b>To Newtown SA1's 1139410-11;20-23</b>	<b>-2 523</b>	<b>-2 869</b>
Less part SA2 Petersham-Stanmore (Balance of Petersham)		
<b>To Newtown SA1's 1132701-5;28</b>	<b>-1 553</b>	<b>-1 573</b>
Less part SA2 Haberfield-Summer Hill (Suburb of Haberfield)		
<b>To Drummoyne SA1's 1139503-8;15;24-32</b>	<b>-4 883</b>	<b>-4 856</b>
Less part SA2 Croydon Park-Enfield (Balance of Croydon Park)		
<b>To Strathfield SA1's 11337;39</b>	<b>-410</b>	<b>-418</b>
Less part SA2 Summer Hill (Its share of Ashbury)		
<b>To Strathfield SA1's 1129204-9;23-26</b>	<b>-2 313</b>	<b>-2 309</b>
Plus part SA2 Ashfield (Part Hurlstone Park)		
<b>Ex Canterbury SA1 1139029</b>	<b>+459</b>	<b>+452</b>
Plus part SA2 Canterbury (North)-Ashbury (Its share of Canterbury and Hurlstone Park)		
<b>Ex Canterbury SA1's 1139201-3;9-22</b>	<b>+5 306</b>	<b>+5 248</b>
Plus part SA2 Canterbury (South)-Campsie (Its share of Canterbury and that part of Campsie south of Railway and east of Beamish Street and Bexley Road)		
<b>Ex Canterbury SA1's 1136305;12-14;31-35;40-46;52-53;58;62-63;66</b>	<b>+5 386</b>	<b>+5 329</b>
<b>TOTAL</b>	<b>56 659(-0.9)</b>	<b>58 507(-1.2)</b>

<b>8. BALMAIN</b>	<b>57 805(1.1)</b>	<b>59 054(-0.3)</b>
-------------------	--------------------	---------------------

**No Change**

**9. DRUMMOYNE** 54 154(-5.3) 55 307(-6.7)

Plus part SA2 Haberfield-Summer Hill (Suburb of Haberfield)

Ex Summer Hill SA1's 1139503-8;15;24-32 +4 883 +4 856

**TOTAL** 59 037(3.2) 60 163(1.6)

**10. STRATHFIELD** 53 950(-5.7) 55 735(-5.9)

Plus part SA2 Croydon Park-Enfield (Balance of Croydon Park)

Ex Summer Hill SA1's 11337;39 +410 +418

Plus part SA2 Summer Hill (Its share of Ashbury)

Ex Summer Hill SA1's 1129204-9;23-26 +2 313 +2 309

**TOTAL** 56 673(-0.9) 58 462(-1.3)

**11. CANTERBURY (Rename Earwood)** 57 473(0.5) 58 536(-1.2)

Less part SA2 Ashfield (Part Hurlstone Park)

To Summer Hill SA1 1139029 -459 -452

Less part SA2 Canterbury (North)-Ashbury (Its share of Canterbury and Hurlstone Park)

To Summer Hill SA1's 1139201-3;9-22 -5 306 -5 248

Less part SA2 Canterbury (South)-Campsie (Its share of Canterbury and that part of Campsie south of Railway and east of Beamish Street and Bexley Road)

To Summer Hill SA1's 1136305;12-14;31-35;40-46;52-53;58;62-63;66

-5 386 -5 329

Less part SA2 Kingsgrove (North)-Kingsgrove (That part of Kingsgrove south east of Moorefields Rd to Kingsgrove Rd and then south of William St)

<b>To Kogarah SA1's 1136412;28;31-34;37-38;40-41;53</b>	<b>-3 668</b>	<b>-3 637</b>
<b>Less part SA2 Roselands (Its share of Beverly Hills)</b>		
<b>To Kogarah SA1's 1136714-15</b>	<b>-602</b>	<b>-591</b>
<b>Plus SA2 Lakemba (Part suburb of Lakemba south of Railway Line)</b>		
<b>Ex Lakemba SA1's 1157301-2;5;8-10;12;15;20;22;26;29</b>	<b>+3 348</b>	<b>+3 558</b>
<b>Plus SA2 Wiley Park (part below Railway Line)</b>		
<b>Ex Lakemba SA1's 1157401;4;7-8;10;13-18;21</b>	<b>+2 900</b>	<b>+2 925</b>
<b>Plus part SA2 Roselands (Its entire share)</b>		
<b>Ex Lakemba SA1's 1136701-12</b>	<b>+3 949</b>	<b>+3 918</b>
<b>Plus part SA2 Punchbowl (That part south of Canterbury Rd)</b>		
<b>Ex Lakemba SA11136601-9;41-47</b>	<b>+4 048</b>	<b>+4 369</b>
<b>TOTAL</b>	<b>56 297(-1.6)</b>	<b>58 049(-2.0)</b>

St George/Bankstown	23/03/20 (Var)	17/04/23 (Var)
1. Rockdale	56 609(-1.0)	59 229 (-)
2. Kogarah	53 419(-6.6)	54 077 (-8.7)
3.Oatley	54 351(-5.0)	54 546 (-7.9)
4.Lakemba	55 449(-3.1)	56 921 (-3.9)
5.East Hills	55 754(-2.5)	56 282 (-5.0)
6.Bankstown	54 774(-4.2)	57 207 (-3.4)
7.Auburn	56 274(-1.6)	59 374 (0.2)
Totals	386 630(-24.0)	397 636 (-28.8)

	<u>23/03/20</u>	<u>17/04/23</u>
1. <u>ROCKDALE</u>	<u>56 609(-1.0)</u>	<u>59 229(-)</u>
<b>No Change</b>		
2. <u>KOGARAH</u>	<u>53 419(-6.6)</u>	<u>54 077(-8.7)</u>
<b>Plus part SA2 Kingsgrove (North)-Kingsgrove (That part of Kingsgrove south east of Moorefields Rd to Kingsgrove Rd and then south of William St)</b>		
<b>Ex Canterbury SA1's 1136412;28;31-34;37-38;40-41;53</b>	<b>+3 668</b>	<b>+3 637</b>
<b>Plus part SA2 Roselands (Its share of Beverly Hills)</b>		
<b>Ex Canterbury SA1's 1136714-15</b>	<b>+602</b>	<b>+591</b>
<b>Plus part SA2 Narwee-Beverley Hills (part Beverley Hills)</b>		
<b>Ex Lakemba SA1's 1137011;17</b>	<b>+741</b>	<b>+745</b>
<b>TOTAL</b>	<b>58 430(2.2)</b>	<b>59 050(-0.3)</b>

<b>3. OATLEY</b>	<b>54 351(-5.0)</b>	<b>54 546(-7.9)</b>
Plus part SA2 Riverwood (Lakemba's share)		
Ex Lakemba SA1's 1137307-17;20-25	+4 521	+4 633
Plus part SA2 Narwee-Beverley Hills (Narwee)		
Ex Lakemba SA1's 1137011;14-16;30	+1 401	+1 399
<b>TOTAL</b>	<b>60 273(5.4)</b>	<b>60 578(2.3)</b>

<b>4. LAKEMBA (Rename Bankstown)</b>	<b>55 449(-3.1)</b>	<b>56 921(-3.9)</b>
Less SA2 Lakemba (Part suburb of Lakemba south of Railway Line)		
To Canterbury SA1's 1157301-2;5;8-10;12;15;20;22;26;29	-3 348	-3 558
Less part SA2 Roselands (Its entire share)		
To Canterbury SA1's 1136701-12	-3 949	-3 918
Less part SA2 Wiley Park (part below Railway Line)		
To Canterbury SA1's 1157401;4;7-8;10;13-18;21	-2 900	-2 925
Less part SA2 Punchbowl (That part south of Canterbury Rd)		
To Canterbury SA1's 1136601-9;41-47	-4 048	-4 369
Less part SA2 Riverwood (Lakemba's share)		
To Oatley SA1's 1137307-17;20-25	-4 521	-4 633
Less Plus part SA2 Narwee-Beverley Hills (Narwee)		
To Oatley SA1's 1137011;14-16;30	-1 401	-1 399
Less part SA2 Narwee-Beverley Hills (part Beverley Hills)		
To Kogarah SA1's 1137011;17	-741	-745
Plus part SA2 Bankstown North (Its share)		
Ex Bankstown SA1's 1157101-5;7-17;20-40	+8 538	+8 915
Plus part SA2 Bankstown South (East of Stacey St)		
Ex Bankstown SA1's 1157218	+4	+4

<b>Plus part SA2 Punchbowl (Its share)</b>		
<b>Ex Bankstown SA1's 1136624-26</b>	<b>+897</b>	<b>+888</b>
<b>Plus part SA2 Chullora (Its share=suburb of Potts Hill)</b>		
<b>Ex Bankstown SA1 1135502</b>	<b>+719</b>	<b>+705</b>
<b>Plus part SA2 Regents Park (Its share)</b>		
<b>Ex Bankstown SA1's 1158707-8</b>	<b>+443</b>	<b>+475</b>
<b>Plus part SA2 Yagoona-Birrong (East of Woods Rd to Ferrier Rd, then generally east of Hood St to the Hume Hwy and all south of the Hume Hwy)</b>		
<b>Ex Bankstown SA1's 1136103;5-23;26-46</b>	<b>+12 748</b>	<b>+13 051</b>
<b>Plus part SA2 Yagoona-Birrong (Its share)</b>		
<b>Ex East Hills SA1 1136104</b>	<b>+426</b>	<b>+418</b>
<b>TOTAL</b>	<b>58 316(2.0)</b>	<b>59 830(1.0)</b>
<hr/>		
<b>5. EAST HILLS</b>	<b>55 754(-2.5)</b>	<b>56 282(-5.0)</b>
<hr/>		
<b>Less part SA2 Bass Hill-Georges Hall (Its Share)</b>		
<b>To Villawood SA1's 1135402;11;16;18;25-26;28-34;44;51</b>	<b>-3 377</b>	<b>-3 295</b>
<b>Less part SA2 Yagoona-Birrong (Its share)</b>		
<b>To Lakemba SA1 1136104</b>	<b>-426</b>	<b>-418</b>
<b>Plus part SA2 Bankstown-South (That part west of Stacey St and south of Marion St and the Railway Line)</b>		
<b>Ex Bankstown SA1's 1157201-6;8-9;11-12;14-16;19-31;34;36;38;40-41;43-44</b>	<b>+7 132</b>	<b>+8 181</b>
<b>TOTAL</b>	<b>59 083(3.3)</b>	<b>60 750(2.5)</b>



<b>6. BANKSTOWN (Rename Villawood)</b>	<b>54 774(-4.2)</b>	<b>57 207(-3.4)</b>
Less part SA2 Bankstown South (East of Stacey St)		
To Lakemba SA1's 1157218	-4	-4
Less part SA2 Bankstown North (Its share)		
To Lakemba SA1's 1157101-5;7-17;20-40	-8 538	-8 915
Less part SA2 Punchbowl (Its share)		
To Lakemba SA1's 1136624-26	-897	-888
Less part SA2 Yagoona-Birrong (East of Woods Rd to Ferrier Rd, then generally east of Hood St to the Hume Hwy and all south of the Hume Hwy)		
To Lakemba SA1's 1136103;5-23;26-46	-12 748	-13 051
Less part SA2 Bankstown-South (That part west of Stacey St and south of Marion St and the Railway Line)		
To East Hills SA1's 1157201-6;8-9;11-12;14-16;19-31;34;36;38;40-41;43-44	-7 132	-8 181
Plus part SA2 Bass Hill-Georges Hall (Its Share)		
Ex East Hills SA1's 1135402;11;16;18;25-26;28-34;44;51	+3 377	+3 295
Plus SA2 Fairfield East		
Ex Fairfield	+9 485	+9 752
Plus part SA2 Canley Vale-Canley Heights (Its share of Canley Vale)		
Ex Fairfield SA1's 1151301-2;15-17;22-25;29-32;40-41;46-48	+4 390	+4 392
Plus SA2 Cabramatta-Lansvale		
Ex Cabramatta	+15 156	+14 917
Plus part SA2 Canley Vale-Canley Heights (Its share of Canley Vale)		
Ex Cabramatta SA1's 1151304-5;42-45	+1 998	+2 019
<b>TOTAL</b>	<b>59 861(4.7)</b>	<b>60 543(2.2)</b>

**7. AUBURN****56 274(-1.6)****59 374(0.2)****No Change**

<b>Western Suburbs</b>	<b>23/03/20 (Var)</b>	<b>17/04/23 (Var)</b>
<b>1. Blue Mountains</b>	<b>54 385(-4.9)</b>	<b>54 744 (-7.6)</b>
<b>2. Penrith</b>	<b>56 970(-0.4)</b>	<b>58 703 (-0.9)</b>
<b>3.Londonderry</b>	<b>67 090(17.3)</b>	<b>72 165 (21.8)</b>
<b>4.Mount Druitt</b>	<b>56 950(-0.4)</b>	<b>57 925 (-2.2)</b>
<b>5.Riverstone</b>	<b>63 379(10.8)</b>	<b>72 253 (22.0)</b>
<b>6.Blacktown</b>	<b>55 408(-3.1)</b>	<b>56 454 (-4.7)</b>
<b>7.Seven Hills</b>	<b>53 790(-6.0)</b>	<b>55 130 (-6.9)</b>
<b>8.Parramatta</b>	<b>57 894(1.2)</b>	<b>62 363 (5.3)</b>
<b>Totals</b>	<b>465 866 (14.6)</b>	<b>489 737 (26.7)</b>

	<u>23/03/20</u>	<u>17/04/23</u>
<b>1. BLUE MOUNTAINS</b>	<b>54 385(-4.9)</b>	<b>54 744(-7.6)</b>
<b>Plus</b> all of Penrith's share of SA2 Blaxland-Warrimoo-Lapstone (also = Penrith's share of Blue Mountains Council. <b>Ex Penrith</b>	<b>+4 599</b>	<b>+4 606</b>
<b>TOTAL</b>	<b>58 964(3.1)</b>	<b>59 350(0.2)</b>
<b>2. PENRITH</b>	<b>56 970(-0.4)</b>	<b>58 703(-0.9)</b>
<b>Less</b> all of Penrith's share of SA2 Blaxland-Warrimoo-Lapstone (also = Penrith's share of Blue Mountains Council. <b>To Blue Mountains</b>	<b>-4 599</b>	<b>-4 606</b>
<b>Plus</b> part SA2 Cambridge Park. (The entire suburb of Cambridge Park)		
SA1's 1145704-9;12-19;38-39. <b>Ex Londonderry</b>	<b>+4 547</b>	<b>+4 543</b>
<b>TOTAL</b>	<b>56 918(-0.5)</b>	<b>58 640(-1.0)</b>

<b>3. LONDONDERRY</b>	<b>67 090(17.3)</b>	<b>72 165(21.8)</b>
<b>Less part SA2 Cambridge Park. (The entire suburb of Cambridge Park)</b>		
SA1's 1145704-9;12-19;38-39. <b>To Penrith</b>	<b>-4 547</b>	<b>-4 543</b>
<b>Less part SA2 Riverstone-Marsden Park (The entire suburbs of Marsden Park and Shanes Park)</b>		
SA1's 1131222;35 <b>To Mount Druitt</b>	<b>-4 213</b>	<b>-6 769</b>
<b>Less part SA2 Lethbridge Park-Tregear (The entire suburb of Wilmot and its share of the suburb of Shalvey SA1's 1130601-2;10-12;33-35 <b>To Mount Druitt</b></b>		
	<b>-1 486</b>	<b>-1 491</b>
<b>TOTAL</b>	<b>56 844(-0.6)</b>	<b>59 362(0.2)</b>
<b>4. MOUNT DRUITT</b>	<b>56 950(-0.4)</b>	<b>57 925(-2.2)</b>
<b>Less SA2 Glendenning-Dean Park <b>To Blacktown</b></b>		
	<b>-5 276</b>	<b>-5 311</b>
<b>Less part SA2 Riverstone-Marsden Park (the entire suburb of Colebee)</b>		
SA1's 1131236-39 <b>To Blacktown</b>	<b>-2 562</b>	<b>-2 818</b>
<b>Plus part SA2 Riverstone-Marsden Park (The entire suburbs of Marsden Park and Shanes Park)</b>		
SA1's 1131222;35 <b>Ex Londonderry</b>	<b>+4 213</b>	<b>+6 769</b>
<b>Plus part SA2 Lethbridge Park-Tregear (The entire suburb of Wilmot and its share of the suburb of Shalvey SA1's 1130601-2;10-12;33-35 <b>Ex Londonderry</b></b>		
	<b>+1 486</b>	<b>+1 491</b>
<b>TOTAL</b>	<b>54 811(-4.2)</b>	<b>58 056(-2.0)</b>
<b>5. RIVERSTONE</b>	<b>63 379(10.8)</b>	<b>72 253(22.0)</b>
<b>Less SA2 Glenwood (contains entire suburb of Glenwood)</b>		
SA1's 1130901-36 <b>To Seven Hills</b>	<b>-10 422</b>	<b>-10 293</b>
<b>Less part SA2 Quakers Hill (that part south west of Eastern Road)</b>		
SA1's 1156308;23;29;52;56 <b>To Blacktown</b>	<b>-954</b>	<b>-1 123</b>
<b>TOTAL</b>	<b>52 003(-9.1)</b>	<b>60 837 (2.7)</b>

<b>6. BLACKTOWN</b>	<b>55 408(-3.1)</b>	<b>56 454(-4.7)</b>
<b>Less part SA2 Lalor Park-Kings Langley (Its share)</b>		
<b>To Seven Hills SA1's 1130707-8;18-20;34-35;37-40;42;48;55-56</b>		
	<b>-4 899</b>	<b>-4 952</b>
<b>Less part SA2 Blacktown (East)-Kings Park (East of Sunnyholt Road)</b>		
<b>To Seven Hills SA1's 1130301;4-7;22-27;33-37</b>		
	<b>-4 005</b>	<b>-4 205</b>
<b>Plus part SA2 Quakers Hill (that part south west of Eastern Road)</b>		
<b>SA1's 1156308;23;29;52;56 Ex Riverstone</b>		
	<b>+954</b>	<b>+1 123</b>
<b>Plus SA2 Glendenning-Dean Park Ex Mount Druitt</b>		
	<b>+5 276</b>	<b>+5 311</b>
<b>Plus part SA2 Riverstone-Marsden Park (the entire suburb of Colebee)</b>		
<b>SA1's 1131236-39 Ex Mount Druitt</b>		
	<b>+2 562</b>	<b>+2 818</b>
<b>Plus part SA2 Blacktown West (part suburb of Blacktown)</b>		
<b>SA1's 1156119;24;30 Ex Prospect</b>		
	<b>+1 114</b>	<b>+1 196</b>
<b>Plus part SA2 Blacktown South</b>		
	<b>+2 498</b>	<b>+2 487</b>
<b>Ex Prospect</b>		
<b>(Above additionally includes the split SA1's 1156108</b>		
	<b>+147</b>	<b>+144</b>
<b>1156018</b>	<b>+38</b>	<b>+39</b>
<b>Plus part SA2 Rooty Hill-Minchinbury (Its share)</b>		
	<b>+8</b>	<b>+9</b>
<b>Ex Prospect SA1's 1131910;20</b>		
<b>Plus part SA2 Prospect Reservoir (That part containing Arndell Park; Huntingwood and its share of the suburb of Eastern Creek)</b>		
<b>Ex Prospect SA1's 1131801</b>		
	<b>+3</b>	<b>+4</b>
<b>SA1 1131802 which contains 0 electors is split at the suburb boundary between Eastern Creek and Prospect</b>		
<b>Plus part SA2 Prospect Reservoir SA1131803</b>		
	<b>0</b>	<b>0</b>
<b>Ex Mulgoa</b>		
<b>TOTAL</b>	<b>59 104(3.3)</b>	<b>60 428(2.0)</b>

<b>7. SEVEN HILLS</b>	<b>53 790(-6.0)</b>	<b>55 130(-6.9)</b>
<b>Less SA2 Winston Hills To Baulkham Hills</b>	<b>-7 799</b>	<b>-7 783</b>
<b>Less part SA2 Lalor Park-Kings Langley (its share of suburb of Baulkham Hills)</b>		
<b>SA1's 1130702-3 To Baulkham Hills</b>	<b>-504</b>	<b>-509</b>
<b>Less part SA2 Northmead (its share of the suburbs of Baulkham Hills and Winston Hills and part Northmead )</b>		
<b>SA1's 1149103;14;19-21</b>	<b>-1 830</b>	<b>-1 825</b>
<b>To Baulkham Hills</b>		
<b>Less part SA2 Toongabbie-Constitution Hill (North east of Old Windsor Rd)</b>		
<b>SA1's 1149301-2;8;18;26;28;34 To Baulkham Hills</b>	<b>-2 096</b>	<b>-2 107</b>
<b>Less part SA2 Northmead (That part containing the suburb of Northmead)</b>		
<b>To Parramatta SA1's 1149101-2;22-28;30;33-34;36-38;40;43;46;51-54</b>		
	<b>-5 870</b>	<b>-5 905</b>
<b>Plus SA2 Glenwood (contains entire suburb of Glenwood)</b>		
<b>SA1's 1130901-36 Ex Riverstone</b>	<b>+10 422</b>	<b>+10 293</b>
<b>Plus part SA2 Lalor Park-Kings Langley (Its share)</b>		
<b>Ex Blacktown SA1's 1130707-8;18-20;34-35;37-40;42;48;55-56</b>		
	<b>+4 899</b>	<b>+4 952</b>
<b>Plus part SA2 Blacktown (East)-Kings Park (East of Sunnyholt Road)</b>		
<b>Ex Blacktown SA1's 1130301;4-7;22-27;33-37</b>	<b>+4 005</b>	<b>+4 205</b>
<b>Plus part SA2 Seven Hills-Toongabbie (part of suburb of Toongabbie)</b>		
<b>EX Prospect</b>	<b>+1 680</b>	<b>+1 768</b>
<b>SA1's 1130820;28-30</b>		
<b>TOTAL</b>	<b>56 697(-0.9)</b>	<b>58 219(-1.7)</b>

<b>8. PARRAMATTA</b>	<b>57 894(1.2)</b>	<b>62 363(5.3)</b>
<b>Less</b> Its share of SA2 Carlingford SA1's 1147601-6;11-14;19;23-24;30-31;38-39;43-44;48-49;51;53-54		
<b>To Epping</b>	<b>-7 186</b>	<b>-8 692</b>
<b>Less</b> part SA2 Parramatta-Rosehill (its share of the suburbs of Granville and Holroyd)		
SA1's 1149238-44 <b>To Granville</b>	<b>-1 372</b>	<b>-1 364</b>
<b>Plus</b> part SA2 Northmead (That part containing the suburb of Northmead)		
<b>Ex Seven Hills</b> SA1's 1149101-2;22-28;30;33-34;36-38;40;43;46;51-54		
	<b>+5 870</b>	<b>+5 905s</b>
<b>TOTAL</b>	<b>55 206(-3.5)</b>	<b>58 212(-1.7)</b>

	23/03/20 (Var)	17/04/23 (Var)
<b>South West Sydney</b>		
1. Mulgoa	58 802(2.8)	60 860 (2.7)
2. Prospect	54 810(-4.2)	55 146 (-6.9)
3.Fairfield	54 028(-5.5)	54 492 (-8.0)
4. Granville	53 986(-5.6)	56 842 (-4.1)
5.Cabramatta	55 194(-3.5)	54 922 (-7.3)
6.Liverpool	58 340(2.0)	60 083 (1.4)
7.Macquarie Fields	64 849(13.4)	71 093 (20.0)
8.Campbelltown	54 810(-4.2)	56 136 (-5.3)
9.Camden	75 379(31.8)	90 387 (52.6)
10.Wollondilly	58 065(1.5)	60 869 (2.7)
<b>Totals</b>	<b>588 263(28.6)</b>	<b>620 820 (47.9)</b>

	<u>23/03/20</u>	<u>17/04/23</u>
<b>1. MULGOA</b>	<b>58 802(2.8)</b>	<b>60 860(2.7)</b>
<b>Less parts of Fairfield Council:</b>		
Part SA2 Horsley Park-Kemps Creek (That part in Fairfield LGA)		
SA1's 1151801-2;5;9-12 <b>To Prospect</b>	<b>-2 024</b>	<b>-2 055</b>
<b>Less part SA2 Bossley Park-Abbotsbury (Entire suburb of Abotsbury)</b>		
SA1's 1151023;25;28-29;38-39;41-45;47-49	<b>-3 233</b>	<b>-3 171</b>
<b>To Prospect</b>		
<b>Less part SA2 Prospect Reservoir SA1131803</b>	<b>0</b>	<b>0</b>
<b>To Blacktown</b>		
<b>Less its share of SA2 West Hoxton-Middleton Grange</b>	<b>-3 659</b>	<b>-3 872</b>
SA1's 1159701-2;5;9-14 <b>To Liverpool (renamed Green Valley)</b>		
<b>Plus Camden's share of Liverpool Council:</b>		
<b>Plus SA2 Badgerys Creek SA1's 1159201-2</b>	<b>+11</b>	<b>+27</b>
<b>Ex Camden</b>		
<b>Plus part SA2 Mulgoa-Luddenham-Orchard Hills</b>	<b>+611</b>	<b>+605</b>



SA1's 1146303;10;20-21 **Ex Camden**

**Plus part SA2 Austral-Greendale** +4 705 +7 187

SA1's 1150501-5;7-10;16-19;21;23 **Ex Camden**

**TOTAL** 55 213(-3.5) 59 581(0.6)

**2. PROSPECT** 54 810(-4.2) 55 146(-6.9)

**Less part SA2 Rooty Hill-Minchinbury To Blacktown** -8 -9

SA1's 1131910;20

**Less part SA2 Blacktown West (part suburb of Blacktown)**

SA1's 1156119;24;30 **To Blacktown** -1 114 -1 196

**Less part SA2 Blacktown South** -2 498 -2 487

**To Blacktown**

(Above additionally includes the split SA1's 1156108 -147 -144

1156018 -38 -39

**Less part SA2 Prospect Reservoir (That part containing Arndell Park; Huntingwood and its share of the suburb of Eastern Creek)**

**To Blacktown SA1's 1131801** -3 -4

SA1 1131802 which contains 0 electors is split at the suburb boundary between Eastern Creek and Prospect

**Less part SA2 Seven Hills-Toongabbie (part of suburb of Toongabbie)**

**To Seven Hills** -1 680 -1 768

SA1's 1130820;28-30

**Plus parts of Fairfield Council:**

Part SA2 Horsley Park-Kemps Creek (That part in Fairfield LGA)

SA1's 1151801-2;5;9-12 **Ex Mulgoa** +2 024 +2 055

**Plus part SA2 Bossley Park-Abbotsbury (Entire suburb of Abotsbury)**

SA1's 1151023;25;28-29;38-39;41-45;47-49 +3 233 +3 171

**Ex Mulgoa**

**Plus** part SA2 Smithfield Industrial

**Ex Fairfield** part SA1 1148601 **+2** **+3**

**Plus** part SA2 Greystanes-Pemulway (Its share of suburb of Greystanes)

SA1's 1148209;16-20;23;30-31;38-42;46-47;50 **+5 195** **+5 207**

**Ex Granville**

**TOTAL** **59 776(4.5)** **59 935(1.2)**

---

<b>3. FAIRFIELD</b>	<b>54 028(-5.5)</b>	<b>54 492(-8.0)</b>
---------------------	---------------------	---------------------

Less its share of SA2 Guilford West-Merrylands West (Entire suburbs of Guilford West and Woodpark and its share of Guilford)

<b>To Granville SA1's 1148401-4;8;17-18;22;27-40</b>	<b>-5 091</b>	<b>-5 150</b>
--	---------------	---------------

Plus SA2 Yennora Industrial (Yennora and that part of Guilford within Cumberland LGA)

<b>To Granville</b>	<b>-11</b>	<b>-12</b>
---------------------	------------	------------

Less part SA2 Smithfield Industrial

<b>To Prospect part SA1 1148601</b>	<b>-2</b>	<b>-3</b>
-------------------------------------	-----------	-----------

Less SA2 Fairfield East

<b>To Bankstown</b>	<b>-9 485</b>	<b>-9 752</b>
---------------------	---------------	---------------

Less part SA2 Canley Vale-Canley Heights (Its share of Canley Vale)

<b>To Bankstown SA1's 1151301-2;15-17;22-25;29-32;40-41;46-48</b>	<b>-4 390</b>	<b>-4 392</b>
---	---------------	---------------

Plus Its share of SA2 St Johns Park-Wakeley (entire suburb of St Johns Park)

<b>Ex Cabramatta SA1's 1152007-11;13;16-23</b>	<b>+4 478</b>	<b>+4 415</b>
--	---------------	---------------

Plus Its share of SA2 Greenfield Park-Prairiewood (Entire suburb of Greenfield Park)

<b>Ex Cabramatta SA1's 1151701-11;19</b>	<b>+3 394</b>	<b>+3 331</b>
--	---------------	---------------

Plus SA2 Cabramatta West-Mt Pritchard

<b>Ex Cabramatta</b>	<b>+11 692</b>	<b>+11 736</b>
----------------------	----------------	----------------

Plus part SA2 Edensor Park (Part north of Edensor Rd to Kalang Rd, then east and north of Kalang Rd to Boomerang Rd then west of Boomerang Rd to Edensor Rd.)

<b>Ex Cabramatta SA1's 1151401-3;9-10;13-22</b>	<b>+4 853</b>	<b>+4 808</b>
---	---------------	---------------

<b>TOTAL</b>	<b>59 466(4.0)</b>	<b>59 513(0.5)</b>
--------------	--------------------	--------------------

**4. GRANVILLE** 53 986(-5.6) 56 842(-4.1)

Less part SA2 Greystanes-Pemulway (Its share of suburb of Greystanes)

SA1's 1148209;16-20;23;30-31;38-42;46-47;50 **-5 195** **-5 207**

**To Prospect**

Plus part SA2 Parramatta-Rosehill (its share of the suburbs of Granville and Holroyd)

SA1's 1149238-44 **Ex Parramatta** **+1 372** **+1 364**

Plus its share of SA2 Guilford West-Merrylands West (Entire suburbs of Guilford West and Woodpark and its share of Guilford)

**Ex Fairfield** SA1's 1148401-4;8;17-18;22;27-40 **+5 091** **+5 150**

Plus SA2 Yennora Industrial (Yennora and that part of Guilford within Cumberland LGA)

**Ex Fairfield** **+11** **+12**

**TOTAL** 55 265(-3.4) 58 161(-1.8)

**5. CABRAMATTA** 55 194(-3.5) 54 922(-7.3)

**Abolished**

<b>6. LIVERPOOL (Rename Green Valley)</b>	<b>58 340(2.0)</b>	<b>60 083(1.4)</b>
<b>Less SA2 Warwick Farm (Suburb Warwick Farm)</b>	<b>-3 334</b>	<b>-3 232</b>
<b>SA1's 1160101-11; To Holsworthy</b>		
<b>Less Its share of SA2 Liverpool (Only contains part suburb of Liverpool)</b>		
<b>SA1's 1159801-16;18;20-21;23;26;28;30-36;39-48;51-55</b>	<b>-12 639</b>	<b>-14 175</b>
<b>To Holsworthy</b>		
<b>Less Its share of SA2 Lurnea-Cartwright (Suburb of Cartwright)</b>		
<b>To Macquarie Fields SA1's 1159901;5;7;19;21</b>	<b>-1 514</b>	<b>-1 518</b>
<b>Plus part SA2 Edensor Park (Part south of Edensor Rd to Kalang Rd, then west and south of Kalang Rd to Boomerang Rd then east of Boomerang Rd to Edensor Rd.</b>		
<b>Ex Cabramatta SA1's 1151405-8;11-12</b>	<b>+2 121</b>	<b>+2 093</b>
<b>Plus SA2 Bonnyrigg Heights-Bonnyrigg</b>		
<b>Ex Cabramatta</b>	<b>+11 502</b>	<b>+11 603</b>
<b>Plus Its share of SA2 West Hoxton-Middleton Grange</b>		
<b>Ex Mulgoa SA1's 1159701-2;5;9-14</b>	<b>+3 659</b>	<b>+3 872</b>
<b>Plus part SA2 West Hoxton-Middleton Grange</b>	<b>+212</b>	<b>+217</b>
<b>SA1's 115971204;7;12;17 Ex Camden</b>		
<b>TOTAL</b>	<b>58 347(2.0)</b>	<b>58 943(-0.5)</b>

**7. MACQUARIE FIELDS 64 849(13.4) 71 093(20.0)**

Less part SA2 Ingleburn-Denham Court (All except that part of Denham Court generally west of Campbelltown Rd) SA1's 1144001-23;25-31;33-40;43-46

**To Minto -12 755 -14 079**

Less Its share of SA2 Claymore-Eagle Vale-Raby

**To Campbelltown -8 032 -8 009**

Less part SA2 Minto-St Andrews (St Andrews; Bow Bowing and that part of Minto west of Railway Line) SA1's 1144301-11;15-17;22-25;28;32-33;42

**To Campbelltown -5 125 -5 053**

Less part SA2 Minto-St Andrews (Remainder east of Railway Line)

**To Minto SA1's 1144312-14;18-21;26-27;29-31;34-41;43-50**

**-8 335 -8 351**

Less Its share SA2 Leumeah-Minto Heights

**To Minto SA1's 1144101;4-6;8;14-16;18-20;33;35-36;**

**-3 324 -3 243**

Plus Its share of SA2 Lurnea-Cartwright (Suburb of Cartwright)

**Ex Liverpool SA1's 1159901;5;7;19;21 +1 514 +1 518**

Plus Its share SA2 Lurnea-Cartwright (Suburb of Lurnea)

**Ex Holsworthy SA1's 1159902-4;6;8-25 +5 731 +5 661**

Plus Its share of Casula SA2

**Ex Holsworthy SA1's 1152201-3;5-10;14-26;29;34-36**

**+7 531 +7 490**

Plus Its share of Prestons-Edmondson Park SA2 (Contains only part Prestons)

**Ex Holsworthy SA1's 1160001;3-38 +10 074 +10 235**

**TOTAL 52 128(-8.9) 57 262(-3.3)**

**8. MINTO (New Electoral District)** \_\_\_\_\_ - \_\_\_\_\_ -

**Plus** part SA2 Ingleburn-Denham Court (All except that part of Denham Court generally west of Campbelltown Rd) SA1's 1144001-23;25-31;33-40;43-46

**Ex Macquarie Fields** **+12 755** **+14 079**

**Plus** part SA2 Minto-St Andrews (Remainder east of Railway Line)

**Ex Macquarie Fields** SA1's 1144312-14;18-21;26-27;29-31;34-41;43-50

**+8 335** **+8 351**

**Plus** its share SA2 Leumeah-Minto Heights

**Ex Macquarie Fields** SA1's 1144101;4-6;8;14-16;18-20;33;35-36;

**+3 324** **+3 243**

**Plus** SA2 Rosemeadow-Glen Alpine

**+14 552** **+14 837**

**Ex Campbelltown**

**Plus** its share SA2 Leumeah-Minto Heights

**+8 117** **+7 971**

**Ex Campbelltown**

**Plus** part SA2 Bradbury-Wedderburn (All except east of Appin Rd and north and west of St Johns Rd) SA1's 1143601-3;5-14;18-24;26-29;34-39;42-46

**Ex Campbelltown** **+9 476** **+9 715**

**TOTAL** **56 559(-1.1)** **58 196(-1.8)**



<b>9. CAMPBELLTOWN</b>	<b>54 810(-4.2)</b>	<b>56 136(-5.3)</b>
Less SA2 Rosemeadow-Glen Alpine	-14 552	-14 837
<b>To Minto</b>		
Less its share SA2 Leumeah-Minto Heights	-8 117	-7 971
<b>To Minto</b>		
Less part SA2 Bradbury-Wedderburn (All except east of Appin Rd and north and west of St Johns Rd) SA1's 1143601-3;5-14;18-24;26-29;34-39;42-46		
<b>To Minto</b>	<b>-9 476</b>	<b>-9 715</b>
Plus part SA2 Cobbitty-Leppington (Suburbs: Catherine Fields;Gledswood Hills; Gregory Hills; Leppington; the part of Rossmore within Camden LGA and part Oran Park)		
SA1's 1150604;6-7;9-10;12-13;15-18;20;22;24-25;27;33		
<b>Ex Camden</b>	<b>+16 612</b>	<b>+23 493</b>
Plus Its share of SA2 Claymore-Eagle Vale-Raby		
<b>Ex Macquarie Fields</b>	<b>+8 032</b>	<b>+8 009</b>
Plus part SA2 Minto-St Andrews (St Andrews; Bow Bowing and that part of Minto west of Railway Line) SA1's 1144301-11;15-17;22-25;28;32-33;42		
<b>Ex Macquarie Fields</b>	<b>+5 125</b>	<b>+5 053</b>
<b>TOTAL</b>	<b>52 434(-8.3)</b>	<b>60 168(1.6)</b>

<b>10. CAMDEN</b>	<b>75 379(31.8)</b>	<b>90 387(52.6)</b>
<b>Less Camden's share of Liverpool Council:</b>		
<b>Less SA2 Badgerys Creek SA1's 1159201-2</b>	<b>-11</b>	<b>-27</b>
<b>To Mulgoa</b>		
<b>Less part SA2 Mulgoa-Luddenham-Orchard Hills</b>	<b>-611</b>	<b>-605</b>
SA1's 1146303;10;20-21 <b>To Mulgoa</b>		
<b>Less part SA2 Austral-Greendale</b>	<b>-4 705</b>	<b>-7 187</b>
SA1's 1150501-5;7-10;16-19;21;23 <b>To Mulgoa</b>		
<b>Less part SA2 West Hoxton-Middleton Grange</b>	<b>-212</b>	<b>-217</b>
SA1's 115971204;7;12;17 <b>To Liverpool (rename Green Valley)</b>		
<b>Less part SA2 Camden-Ellis Lane (All that part within Wollondilly Shire)</b>		
<b>SA1's 1143305-6;16 To Wollondilly</b>	<b>-1 574</b>	<b>-1 561</b>
<b>Less part SA2 Douglas Park-Appin (All is in Wollondilly Shire)</b>		
<b>SA11144618 To Wollondilly</b>	<b>-24</b>	<b>-31</b>
<b>Less part SA2 Cobbitty-Leppington (Suburbs: Catherine Fields;Gledswood Hills; Gregory Hills; Leppington; the part of Rossmore within Camden LGA and part Oran Park)</b>		
SA1's 1150604;6-7;9-10;12-13;15-18;20;22;24-25;27;33		
<b>To Campbelltown</b>	<b>-16 612</b>	<b>-23 493</b>
<b>TOTAL</b>	<b>51 630(-9.7)</b>	<b>57 266(-3.3)</b>

<b>11. WOLLONDILLY</b>	<b>58 065(1.5)</b>	<b>60 869(2.7)</b>
Less part SA2 Bowral (suburb of Burradoo)	-1 966	-1 984
SA1's 1128423-26;30 <b>To Goulburn</b>		
Less part SA2 Southern Highlands (suburb of Woodlands north of Hume Motorway)		
SA11128905 <b>To Goulburn</b>	-183	-189
Less part SA2 Hill Top-Colo Vale (suburb of Colo Vale) <b>To Goulburn</b>		
SA1's 11208-11	-1 061	-1 100
Need to split SA1 1128515 (whole SA1 =375/380) at suburb boundary		
Allocate to Goulburn only part SA1 1128515 within Colo Vale		
	-190	-190
<b>Plus</b> part SA2 Camden-Ellis Lane (All that part within Wollondilly Shire)		
SA1's 1143305-6;16 <b>Ex Camden</b>	+1 574	+1 561
<b>Plus</b> part SA2 Douglas Park-Appin (All is in Wollondilly Shire)		
SA11144618 <b>Ex Camden</b>	+24	+31
<b>TOTAL</b>	<b>56 263(-1.6)</b>	<b>58 998(-0.4)</b>

North Shore	23/03/20 (Var)	17/04/23 (Var)
1. Pittwater	56 327(-1.5)	56 914(-3.9)
2. Wakehurst	56 227(-1.7)	56 577 (-4.5)
3. Manly	55 930(-2.2)	56 715 (-4.3)
4. Davidson	55 128(-3.6)	55 025 (-7.1)
5. North Shore	55 380(-3.2)	57 575 (-2.8)
6. Willoughby	54 933(-4.0)	55 511 (-6.3)
7. Lane Cove	58 499(2.3)	59 857 (1.0)
8. Ku Ring Gai	55 296(-3.3)	55 599 (-6.2)
9. Ryde	56 313(-1.5)	58 285 (-1.6)
10. Epping	55 243(-3.4)	56 568 (-4.5)
Totals	659 276 (-22.1)	568 626 (-40.2)

	<u>23/03/20</u>	<u>17/04/23</u>
<b>1. PITTWATER</b>	<b>56 327(-1.5)</b>	<b>56 914(-3.9)</b>
Plus part SA2 Narrabeen-Collaroy (Entire suburb of Wheelers hill and balance of Narrabeen)		
Ex Wakehurst SA1's 1143118;21;25-28;37	+2 368	+2 376
<b>TOTAL</b>	<b>58 695(2.6)</b>	<b>59 290(0.1)</b>
<b>2. WAKEHURST</b>	<b>56 277(-1.7)</b>	<b>56 577(-4.5)</b>
Less part SA2 Narrabeen-Collaroy (Entire suburb of Wheelers hill and balance of Narrabeen)		
To Pittwater SA1's 1143118;21;25-28;37	-2 368	-2 376
Less part SA2 Dee Why-North Curl Curl (That part of the suburb of Dee Why east of Pittwater Rd)		
To Manly SA1's 1142604-7;14;23-31	-3 787	-3 900
Plus SA2 Terrey Hills-Duffys Forest		
Ex Davidson SA1 1143205	0	0
Plus part SA2 Frenchs Forest-Belrose (Entire suburbs of Belrose and Davidson plus part Frenchs Forest) SA1's 1142806-22;36-38;40-43;45-54;57;59-60		
Ex Davidson	+10 453	+10 377
<b>TOTAL</b>	<b>60 585(5.9)</b>	<b>60 678(2.4)</b>

**3. MANLY** 55 930(-2.2) 56 715(-4.3)

Plus part SA2 Dee Why-North Curl Curl (That part of the suburb of Dee Why east of Pittwater Rd)

Ex Wakehurst SA1's 1142604-7;14;23-31 +3 787 +3 900

**TOTAL** 59 717(4.4) 60 615(2.3)

**4. DAVIDSON (Rename Gordon)** 55 128(-3.6) 55 025(-7.1)

Less SA2 Terrey Hills-Duffys Forest

To Wakehurst SA1 1143205 -0 -0

Less part SA2 Frenchs Forest-Belrose (Entire suburbs of Belrose and Davidson plus part Frenchs Forest) SA1's 1142806-22;36-38;40-43;45-54;57;59-60

To Wakehurst -10 453 -10 377

Less part SA2 Willoughby-Castle Cove-Northbridge (Entire suburb of Castle Cove)

To Willoughby SA1's 1140201-2;17-21 -1 931 -1 925

Plus part SA2 Gordon-Killara (Its Share)

Ex Ku -Ring-Gai SA1's 1140706-14;18-19;41-53 +7 687 +7 572

Plus part SA2 Pymble (Its share)

Ex Ku-Ring-Gai SA1's 1140901-12;16-19;21-23;26-44 +10 567 +10 675

**TOTAL** 60 998(6.7) 60 970(2.9)

**5. NORTH SHORE** 55 389(-3.2) 57 575(-2.8)

Plus part SA2 Lane Cove-Greenwich (Its share of St Leonards)

Ex Lane Cove SA1's 1140057;64 +646 +799

**TOTAL** 56 035(-2.0) 58 374(-1.5)

<b>6. WILLOUGHBY</b>	<b>54 933(-4.0)</b>	<b>55 511(-6.3)</b>
<b>Plus part SA2 Willoughby-Castle Cove-Northbridge (Entire suburb of Castle Cove)</b>		
<b>Ex Davidson SA1's 1140201-2;17-21</b>	<b>+1 931</b>	<b>+1 925</b>
<b>Plus part SA2 Chatswood (East)-Artarmon (part Artarmon)</b>		
<b>Ex Lane Cove SA1's 1139813;18-19;32;41-43;51;60</b>	<b>+2 033</b>	<b>+2 088</b>
<b>TOTAL</b>	<b>58 897(3.0)</b>	<b>59 524(0.5)</b>

<b>7. LANE COVE</b>	<b>58 499(2.3)</b>	<b>59 857(1.0)</b>
<b>Less part SA2 Chatswood (East)-Artarmon (part Artarmon)</b>		
<b>To Willoughby SA1's 1139813;18-19;32;41-43;51;60</b>	<b>-2 033</b>	<b>-2 088</b>
<b>Less part SA2 Lane Cove-Greenwich (Its share of St Leonards)</b>		
<b>To North Shore SA1's 1140057;64</b>	<b>-646</b>	<b>-799</b>
<b>Plus part SA2 North Ryde-East Ryde (North of Coxs Rd and east of Wicks Rd)</b>		
<b>Ex Ryde SA1's 1150108;15-19</b>	<b>+1 525</b>	<b>+1 522</b>
<b>TOTAL</b>	<b>57 345(0.3)</b>	<b>58 492(-1.3)</b>

<b>8. KU-RING-GAI</b>	<b>55 296(-3.3)</b>	<b>55 599(-6.2)</b>
Less part SA2 Gordon-Killara (Its Share)		
<b>To Davidson SA1's 1140706-14;18-19;41-53</b>	<b>-7 687</b>	<b>-7 572</b>
Less part SA2 Pymble (Its share)		
<b>To Davidson SA1's 1140901-12;16-19;21-23;26-44</b>	<b>-10 567</b>	<b>-10 675</b>
Less part SA2 Hornsby East (North of Pretoria Pde and west of James Lane)		
<b>To Hornsby SA1's 1157706;11;14;27</b>	<b>-1 076</b>	<b>-1 000</b>
Less part SA2 Waitara-Wahroonga (West of the Sydney Newcastle Fwy and north of Railway Line) SA1's 1157903;7-10;12;15;17-18;20		
<b>To Hornsby</b>	<b>-3 132</b>	<b>-3 034</b>
Plus part SA2 Normanhurst-Thornleigh-Westleigh (East of Railway Line)		
<b>Ex Hornsby SA1's 1140637-39</b>	<b>+731</b>	<b>+769</b>
Plus its share of SA2 Pennant Hills-Cheltenham		
<b>Ex Hornsby SA1's 1149601-9;11-13;25-26;41-42;44-46;48;50</b>	<b>+4 484</b>	<b>+4 727</b>
Plus part SA2 Pennant Hills-Cheltenham (North west of Pennant Hills Rd)		
<b>Ex Epping SA1's 1149610;17-20;32-34;37-39</b>	<b>+3 485</b>	<b>+3 457</b>
<b>Plus SA2 Cherrybrook Ex Epping</b>	<b>+13 086</b>	<b>+12 794</b>
Plus its share of SA2 Dural-Kenthurst-Wisemans Ferry		
<b>Ex Epping SA1's 1129736-37;43-45;48;57</b>	<b>+1 489</b>	<b>+1 487</b>
Plus its share of SA2 Castle Hill East		
<b>Ex Epping SA1's 1155401-13</b>	<b>+3 908</b>	<b>+3 894</b>
<b>TOTAL</b>	<b>60 017(4.9)</b>	<b>60 446(2.0)</b>



<b>9. RYDE</b>	<b>56 313(-1.5)</b>	<b>58 285(-1.6)</b>
Less part SA2 North Ryde-East Ryde (North of Coxs Rd and east of Wicks Rd)		
To Lane Cove SA1's 1150108;15-19	-1 525	-1 522
Plus part SA2 Epping-North Epping (West of Railway Line and south of Epping Rd)		
Ex Epping SA1's 1149505;20-21;37;49;54	+1 569	+1 710
50% 114 9504 (Split at Epping Rd)	+173	+400
<b>TOTAL</b>	<b>56 150(-1.2)</b>	<b>58 873(-0.6)</b>
<b>10. EPPING</b>	<b>55 243(-3.4)</b>	<b>56 568(-4.5)</b>
Less part SA2 Epping-North Epping (West of Railway Line and south of Epping Rd)		
To Ryde SA1's 1149505;20-21;37;49;54	-1 569	-1 710
50% 114 9504 (Split at Epping Rd)	-173	-400
Less part SA2 Pennant Hills-Cheltenham (North west of Pennant Hills Rd)		
To Ku-Ring-Gai SA1's 1149610;17-20;32-34;37-39	-3 485	-3 457
Less SA2 Cherrybrook To Ku-Ring-Gai	-13 086	-12 794
Less Its share of SA2 Dural-Kenthurst-Wisemans Ferry		
To Ku-Ring-Gai SA1's 1129736-37;43-45;48;57	-1 489	-1 487
Less Its share of SA2 Castle Hill East		
To Ku-Ring-Gai SA1's 1155401-13	-3 908	-3 894
Plus part SA2 West Pennant Hills Ex Baulkham Hills	+9 472	+9 595
Plus Its share of SA2 Carlingford	+3 983	+3 931
Ex Baulkham Hills SA1's 1147602;9-10;19-21;32-35;39;45-47;53;55		
Plus Its share of SA2 North Rocks		
Ex Baulkham Hills SA1's 1149002-4;6-10;13-15;18	+3 540	+3 510
Plus Its share of SA2 Carlingford SA1's 1147601-6;11-14;19;23-24;30-31;38-39;43-44;48-49;51;53-54		
EX Parramatta	+7 186	+8 692
<b>TOTAL</b>	<b>55 714(-2.6)</b>	<b>58 554(-1.2)</b>

North West Sydney	23/03/20 (Var)	17/04/23 (Var)
1. Castle Hill	61 104(6.8)	68 782 (16.1)
2. Baulkham Hills	56 371(-1.4)	58 554 (-1.2)
3.Hornsby	56 016(-2.1)	56 954 (-3.9)
4.Hawkesbury	55 910(-2.2)	57 177 (-3.5)
<b>Totals</b>	<b>229 401 (1.1)</b>	<b>241 467 (7.6)</b>

	<u>23/03/20</u>	<u>17/04/23</u>
<b>1. <u>CASTLE HILL (Rename Annangrove)</u></b>	<b>61 104(6.8)</b>	<b>68 782(16.1)</b>
Less part SA2 Rouse Hill-Beaumont Hills (Part suburb of Box Hill)		
To Hawkesbury SA1's 1130218;21	-2 160	-5 607
Less Its share of SA2 Castle Hill South		
To Baulkham Hills SA1's 1155602-6;9-12;14-18	-4 142	-4 058
Less Its share of SA2 Castle Hill Central		
To Baulkham Hills SA1's 115 5302-3;5-10;13;16-17	-2 730	-2 742
<b>TOTAL</b>	<b>52 072(-9.0)</b>	<b>56 375(-4.8)</b>
<b>2. <u>BAULKHAM HILLS</u></b>	<b>56 371(-1.4)</b>	<b>58 554(-1.2)</b>
Less part SA2 West Pennant Hills To Epping	-9 472	-9 595
Less Its share of SA2 Carlingford	-3 983	-3 931
To Epping SA1's 1147602;9-10;19-21;32-35;39;45-47;53;55		
Less Its share of SA2 North Rocks		
To Epping SA1's 1149002-4;6-10;13-15;18	-3 540	-3 510
Plus SA2 Winston Hills Ex Seven Hills	+7 799	+7 783
Plus part SA2 Lalor Park-Kings Langley (its share of suburb of Baulkham Hills)		
SA1's 1130702-3 Ex Seven Hills	+504	+509
Plus part SA2 Northmead (its share of the suburbs of Baulkham Hills and Winston Hills and part Northmead )		
SA1's 1149103;14;19-21	+1 830	+1 825
Ex Seven Hills		

<b>Plus part SA2 Toongabbie-Constitution Hill (North east of Old Windsor Rd)</b>		
SA1's 1149301-2;8;18;26;28;34 <b>Ex Seven Hills</b>	<b>+2 096</b>	<b>+2 107</b>
<b>Plus Its share of SA2 Castle Hill South</b>		
<b>Ex Castle Hill</b> SA1's 1155602-6;9-12;14-18	<b>+4 142</b>	<b>+4 058</b>
<b>Plus Its share of SA2 Castle Hill Central</b>		
<b>Ex Castle Hill</b> SA1's 115 5302-3;5-10;13;16-17	<b>+2 730</b>	<b>+2 742</b>
<b>TOTAL</b>	<b>58 477(2.2)</b>	<b>60 542(2.2)</b>

### **3. HORNSBY 56 016(-2.1) 56 954(-3.9)**

<b>Less part SA2 Normanhurst-Thornleigh-Westleigh (East of Railway Line)</b>		
<b>To Ku-Ring-Gai</b> SA1's 1140637-39	<b>-731</b>	<b>-769</b>
<b>Less Its share of SA2 Pennant Hills-Cheltenham</b>		
<b>To Ku-Ring-Gai</b> SA1's 1149601-9;11-13;25-26;41-42;44-46;48;50	<b>-4 484</b>	<b>-4 727</b>
<b>Plus part SA2 Hornsby East (North of Pretoria Pde and west of James Lane)</b>		
<b>Ex Ku-Ring-Gai</b> SA1's 1157706;11;14;27	<b>+1 076</b>	<b>+1 000</b>
<b>Less part SA2 Waitara-Wahroonga (West of the Sydney Newcastle Fwy and north of Railway Line) SA1's 1157903;7-10;12;15;17-18;20</b>		
<b>Ex Ku-Ring-Gai</b>	<b>+3 132</b>	<b>+3 034</b>
<b>Plus part SA2 Dural-Kenthurst-Wisemans Ferry (Balance of Middle Dural plus entire suburb of Glenorie) SA1's 1129703-4;16-20;28-29;31;39;56</b>		
<b>Ex Hawkesbury</b>	<b>+3 040</b>	<b>+3 049</b>
<b>TOTAL</b>	<b>58 049(1.5)</b>	<b>58 541(-1.2)</b>

**4. HAWKESBURY** **55 910(-2.2)** **57 177(-3.5)**

---

Less part SA2 Dural-Kenthurst-Wisemans Ferry (Balance of Middle Dural plus entire suburb of Glenorie) SA1's 1129703-4;16-20;28-29;31;39;56

**To Hornsby** **-3 040** **-3 049**

Plus part SA2 Rouse Hill-Beaumont Hills (Part suburb of Box Hill)

**Ex Castle Hill SA1's 1130218;21** **+2 160** **+5 607**

**TOTAL** **55 030(-3.8)** **59 735(0.8)**

---

Cronulla-Illawarra	23/03/20 (Var)	17/04/23 (Var)
1. Cronulla	57 511(0.6)	58 492 (-1.3)
2. Miranda	55 708(-2.6)	56 723 (-4.3)
3.Holsworthy	57 228(0.1)	57 612 (-2.8)
4.Heathcote	56 432(-1.3)	57 027 (-3.7)
5.Keira	59 068(3.3)	59 335 (0.2)
6.Wollongong	60 693(6.1)	62 274 (5.1)
7.Shellharbour	63 162(10.4)	66 027 (11.5)
8.Kiama	56 298(-1.6)	59 363 (0.2)
Totals	466 100 (15.0)	476 853 (4.9)

	<u>23/03/20</u>	<u>17/04/23</u>
<b>1. CRONULLA</b>	<b>57 511(0.6)</b>	<b>58 492(-1.3)</b>
Plus part SA2 Caringbah (Its share of suburb of Caringbah)		
SA1's 11600202;4;15;17;23;25-26 Ex Miranda	+1 787	+1 842
<b>TOTAL</b>	<b>59 298(3.7)</b>	<b>60 334(1.8)</b>
<b>2. MIRANDA</b>	<b>55 708(-2.6)</b>	<b>56 723(-4.3)</b>
Less part SA2 Caringbah (Its share of suburb of Caringbah)		
SA1's 11600202;4;15;17;23;25-26 To Cronulla	-1 787	-1 842
Less part SA2 Illawong-Alfords Point (Alfords Point: North of Fowler Rd and west of Moon Point Rd) SA1's 1153401-2;18-26;28;31		
<b>To Holsworthy</b>	<b>-2 953</b>	<b>-2 948</b>
Plus part SA2 Menai-Lucas Heights-Woronora (That part of the suburb of Menai north of Menai Rd and east of Old Illawarra Rd and Alfords Point Rd plus entire suburb of Bangor and part suburb of Woronora) SA1's 1153507-9;20;28;30-44;46;51-57		
<b>Ex Heathcote</b>	<b>+7 718</b>	<b>+7 618</b>
Plus part SA2 Sutherland-Kirrawee (part Woronora)	+376	+375
SA1 1153823 Ex Heathcote		
<b>TOTAL</b>	<b>59 062(3.3)</b>	<b>59 926(1.2)</b>

<b>3. HOLSWORTHY (Rename:LIVERPOOL)</b>	<b>57 228(0.1)</b>	<b>57 612(-2.8)</b>
Less Its share SA2 Lurnea-Cartwright (Suburb of Lurnea)		
To Macquarie Fields SA1's 1159902-4;6;8-25	-5 731	-5 661
Less Its share of Casula SA2		
To Macquarie Fields SA1's 1152201-3;5-10;14-26;29;34-36		
	-7 531	-7 490
Less Its share of Prestons-Edmondson Park SA2 (Contains only part Prestons)		
To Macquarie Fields SA1's 1160001;3-38	-10 074	-10 235
Plus part SA2 Illawong-Alfords Point (Alfords Point: North of Fowler Rd and west of Moon Point Rd) SA1's 1153401-2;18-26;28;31		
Ex Menai	+2 953	+2 948
Plus part SA2 Menai-Lucas Heights-Woronora (That part south of Menai Rd and to Alfords Point Rd and west of Alfords Point Rd then Old Illawarra Rd to Alfords Point Rd ) SA1's 1153504;6;10-15;17;19;21-22;45;47-50		
Ex Heathcote	+4 917	+4 875
Plus SA2 Warwick Farm (Suburb Warwick Farm)	+3 334	+3 232
SA1's 1160101-11; Ex Liverpool		
Plus Its share of SA2 Liverpool (Only contains part suburb of Liverpool)		
SA1's 1159801-16;18;20-21;23;26;28;30-36;39-48;51-55	+12 639	+14 175
Ex Liverpool		
<b>TOTAL</b>	<b>57 735(0.9)</b>	<b>59 456(0.4)</b>

**4. HEATHCOTE** **56 432(-1.3)** **57 027(-3.7)**

---

**Less** part SA2 Menai-Lucas Heights-Woronora (That part of the suburb of Menai north of Menai Rd and east of Old Illawarra Rd and Alfords Point Rd plus entire suburb of Bangor and part suburb of Woronora) SA1's 1153507-9;20;28;30-44;46;51-57

**To Miranda**

**-7 718** **-7 618**

**Less** part SA2 Sutherland-Kirrawee (part Woronora) **-376** **-375**

**SA1 1153823 To Miranda**

**Less** part SA2 Menai-Lucas Heights-Woronora (That part south of Menai Rd and to Alfords Point Rd and west of Alfords Point Rd then Old Illawarra Rd to Alfords Point Rd ) SA1's 1153504;6;10-15;17;19;21-22;45;47-50

**To Holsworthy** **-4 917** **-4 875**

**Plus** Keira's share of SA2 Thirroul-Austinmer-Coalcliff **+7 777** **+7 835**

**Ex Keira**

**Plus** part SA2 Woonona-Bulli-Russell Vale (Entire suburb of Bulli and that part of the suburb of Woonona west of the Pacific Highway) SA1's 1115004-6;12;17-19;23-25;28-34;41-4446;48-49;51;53-54

**Ex Keira** **+8 745** **+8 762**

**TOTAL** **59 943(4.8)** **60 756(2.6)**

---

<b>5. KEIRA</b>	<b>59 068(3.3)</b>	<b>59 335(0.2)</b>
<b>Less</b> Keira's share of SA2 Thirroul-Austinmer-Coalcliff	<b>-7 777</b>	<b>-7 835</b>
<b>To Heathcote</b>		
<b>Less</b> part SA2 Woonona-Bulli-Russell Vale (Entire suburb of Bulli and that part of the suburb of Woonona west of the Pacific Highway) SA1's 1115004-6;12;17-19;23-25;28-34;41-4446;48-49;51;53-54		
<b>To Heathcote</b>	<b>-8 745</b>	<b>-8 762</b>
<b>Plus</b> Wollongong's share of SA2 Balgownie-Fairy Meadow	<b>+5 247</b>	<b>+5 282</b>
<b>Ex Wollongong</b>		
<b>Plus</b> part SA2 Wollongong East (Its share of the suburb of North Wollongong)		
SA1's 1154821;24;31;33 <b>Ex Wollongong</b>	<b>+1 176</b>	<b>+1 207</b>
<b>Plus</b> part SA2 Wollongong West (Its share of the suburb of North Wollongong)		
1154901;10;17;32;35 <b>Ex Wollongong</b>	<b>+1 314</b>	<b>+1 354</b>
<b>Plus</b> part SA2 Figtree-Keiraville (Its share of suburb of Figtree)		
SA1's 1114611-12;39-40 <b>Ex Wollongong</b>	<b>+1 280</b>	<b>+1 296</b>
<b>Plus</b> part SA2 Unanderra-Mount Kembla (Suburbs of Cordeaux Heights; Farmborough Heights; Kembla Heights and Mount Kembla) SA1's 1113401-5;7;9-13;16;19;22-27;31-36;42-46:49		
<b>Ex Wollongong</b>	<b>+7 484</b>	<b>+7 458</b>
<b>Plus</b> part SA2 Unanderra-Mount Kembla		
<b>Ex Shellharbour</b> SA1 1113423	<b>+5</b>	<b>+5</b>
<b>TOTAL</b>	<b>59 052(3.3)</b>	<b>59 340(0.2)</b>



<b>6. WOLLONGONG</b>	<b>60 693(6.1)</b>	<b>62 274(5.1)</b>
Less Wollongong's share of SA2 Balgownie-Fairy Meadow	-5 247	-5 282
<b>To Keira</b>		
Less part SA2 Wollongong East (Its share of the suburb of North Wollongong)		
SA1's 1154821;24;31;33 <b>To Keira</b>	<b>-1 176</b>	<b>-1 207</b>
Less part SA2 Wollongong West (Its share of the suburb of North Wollongong)		
1154901;10;17;32;35 <b>To Keira</b>	<b>-1 314</b>	<b>-1 354</b>
Less part SA2 Figtree-Keiraville (Its share of suburb of Figtree)		
SA1's 1114611-12;39-40 <b>To Keira</b>	<b>-1 280</b>	<b>-1 296</b>
Less part SA2 Unanderra-Mount Kembla (Suburbs of Cordeaux Heights; Farmborough Heights; Kembla Heights and Mount Kembla) SA1's 1113401-5;7;9-13;16;19;22-27;31-36;42-49		
<b>To Keira</b>	<b>-7 692</b>	<b>-7 659</b>
Plus part SA2 Horsley-Kembla Grange (Suburbs of Dombarton and Kembla Grange)		
SA1 1113209 <b>Ex Shellharbour</b>	<b>+363</b>	<b>+1 005</b>
Plus part SA2 Dapto-Avondale (Suburbs of Brownsville; part Dapto; Kanahooka; Koonawarra)		
SA1's 1113101-6;8-9;12;17-26;28;36-40;42;44-58	<b>+12 817</b>	<b>+13 033</b>
<b>Ex Shellharbour</b>		
<b>TOTAL</b>	<b>57 164(-0.1)</b>	<b>59 514(0.5)</b>

**7. SHELLHARBOUR** **63 162(10.4)** **66 027(11.5)**

Less part SA2 Unanderra-Mount Kembla

To Keira SA1 1113423 -5 -5

Less part SA2 Horsley-Kembla Grange (Suburbs of Dombarton and Kembla Grange)

SA1 1113209 To Wollongong -363 -1 005

Less part SA2 Dapto-Avondale (Suburbs of Brownsville; part Dapto; Kanahooka; Koonawarra)

SA1's 1113101-6;8-9;12;17-26;28;36-40;42;44-58 -12 817 -13 033

To Wollongong

Plus Kiama's share of SA2 Albion Park Rail (Its share of suburb of Albion Park Rail)

SA1's 1113701-14;17;21-22 Ex Kiama +3 574 +3 609

Plus part SA2 Dapto-Avondale (Its share)

SA1 1113113 Ex Kiama +127 +252

Plus part SA2 Albion Park-Macquarie Park (Suburbs of Calderwood and North Macquarie)

SA1 1113606 Ex Kiama +832 +1 853

**TOTAL** **54 510(-4.7)** **57 698(-2.6)**

**8. KIAMA** **56 298(-1.6)** **59 363(0.2)**

Less Kiama's share of SA2 Albion Park Rail (Its share of suburb of Albion Park Rail)

SA1's 1113701-14;17;21-22 To Shellharbour -3 574 -3 609

Less part SA2 Dapto-Avondale (Its share)

SA1 1113113 To Shellharbour -127 -252

Less part SA2 Albion Park-Macquarie Park (Suburbs of Calderwood and North Macquarie)

SA1 1113606 To Shellharbour -832 -1 853

Plus part SA2 Nowra (that part of the suburb of Nowra north of Junction Street)

SA1's 1127808-9;15-19;30;33-37;41-42 Ex South Coast +4 127 +4 257

**TOTAL** **55 892(-2.3)** **57 906(-2.3)**

South East NSW	23/03/20 (Var)	17/04/23 (Var)
1. South Coast	57 524(0.6)	60 653 (2.4)
2. Bega	58 444(2.2)	61 214 (3.3)
3. Monaro	57 772(1.0)	60 385 (1.9)
Totals	173 740 (3.8)	182 252 (7.6)

	<u>23/03/20</u>	<u>17/04/23</u>
<b>1. SOUTH COAST</b>	<b>57 524(0.6)</b>	<b>60 653(2.4)</b>
Less part SA2 Nowra (that part of the suburb of Nowra north of Junction Street)		
SA1's 1127808-9;15-19;30;33-37;41-42	-4 127	-4 257
To Kiama		
Plus part SA2 Eurobodalla Hinterland		
Ex Bega SA1's 1102412 and its share of 1102401	+388	+398
Plus part SA2 Batemans Bay(suburbs of Long Beach; Maloneys Beach and Surfside)		
SA1's 1101708-10;12-13;16;17;19 Ex Bega	+2 726	+2 913
<b>TOTAL</b>	<b>56 511(-1.2)</b>	<b>59 707(0.1)</b>
<b>2. BEGA</b>	<b>58 444(2.2)</b>	<b>61 214(3.3)</b>
Less part SA2 Batemans Bay(suburbs of Long Beach; Maloneys Beach and Surfside)		
SA1's 1101708-10;12-13;16;17;19 To South Coast	-2 726	-2 913
Less part SA2 Eurobodalla Hinterland		
To South Coast SA1's 1102412 and its share of 1102401	-388	-398
<b>TOTAL</b>	<b>55 330(-3.3)</b>	<b>57 903(-2.3)</b>
<b>3. MONARO</b>	<b>57 772(1.0)</b>	<b>60 385(1.9)</b>
Less part SA2 Queanbeyan Region (Its share of Bywong and Sutton plus all of Wamboin)		
SA1's 1101104;27;30-36;39-40 To Goulburn	-2 821	-2 846

**TOTAL** 54 951(-3.9) 57 539(-2.9)

North Coast	23/03/20 (Var)	17/04/23 (Var)
1. Tweed	57 412(0.4)	59 202 (-0.1)
2. Lismore	55 989(-2.1)	57 759 (-2.5)
3. Ballina	59 417(3.9)	61 991 (4.6)
4. Clarence	56 937(-0.5)	59 193 (-0.1)
5. Coffs Harbour	55 449(-3.1)	57 541 (-2.9)
6. Oxley	57 268(0.1)	59 209 (-0.1)
7. Port Macquarie	60 580(5.9)	63 710 (7.5)
8. Myall Lakes	57 649(0.8)	60 292 (1.8)
9. Port Stephens	56 892(-0.5)	58 970 (-0.5)
10. Maitland	61 476(7.5)	65 682 (10.9)
<b>Totals</b>	<b>579 069 (12.5)</b>	<b>603 549 (18.8)</b>

	23/03/20	17/04/23
<b>1. TWEED</b>	<b>57 412(0.4)</b>	<b>59 202(-0.1)</b>

No Change

<b>2. LISMORE</b>	<b>55 989(-2.1)</b>	<b>57 759(-2.5)</b>
-------------------	---------------------	---------------------

Less SA2 Tenterfield (entire Shire) To Northern Tablelands

	-4 908	-5 053
--	--------	--------

Plus part SA2 Ballina Region (locations of Wollongbar; Dalwood; Lynwood; Rous and Rous Mill)

SA1's 1123704-6;10-11;14;29-30;32-33;	+2 954	+3 075
---------------------------------------	--------	--------

**Ex Ballina**

Plus part SA2 Lismore Region

SA1 1124925 Ex Ballina	+81	+82
------------------------	-----	-----

Plus part SA2 Lismore Region (Its share)

SA1 1124909 Ex Clarence	+50	+50
-------------------------	-----	-----

Plus part SA2 Casino Region (Coraki and West Coraki)	+1 046	+1 069
--	--------	--------

SA1's 1124502-6;19 Ex Clarence

Plus part SA2 Evans Head (Swan Bay; Woodburn and Broadwater)

SA1's 1124101-4;12-14 Ex Clarence	+1 542	+1 569
<b>TOTAL</b>	<b>56 754(-0.8)</b>	<b>58 551(-1.2)</b>

**3. BALLINA** **59 417(3.9)** **61 991(4.6)**

Less part SA2 Lismore Region

SA1 1124925 To Lismore	-81	-82
------------------------	-----	-----

Less part SA2 Ballina Region (locations of Wollongbar;Dalwood;Lynwood;Rous and Rous Mill)

SA1's 1123704-6;10-11;14;29-30;32-33;	-2 954	-3 075
---------------------------------------	--------	--------

To Lismore

<b>TOTAL</b>	<b>56 382(-1.4)</b>	<b>58 834(-0.7)</b>
--------------	---------------------	---------------------

**4. CLARENCE** **56 937(-0.5)** **59 193(-0.1)**

Less part SA2 Casino Region (Coraki and West Coraki)	-1 046	-1 069
--	--------	--------

SA1's 1124502-6;19 To Lismore

Less part SA2 Lismore Region (Its share)

SA1 1124909 To Lismore	-50	-50
------------------------	-----	-----

Less part SA2 Evans Head (Swan Bay; Woodburn and Broadwater)

SA1's 1124101-4;12-14 To Lismore	-1 542	-1 569
----------------------------------	--------	--------

Plus part SA2 Woolgoolga-Arrowarra (Mullaway and all parts north)

SA1's 1109115-18;21-24;29-30;32 Ex Coffs Harbour	+2 954	+3 071
--	--------	--------

<b>TOTAL</b>	<b>57 253(0.1)</b>	<b>59 576(0.6)</b>
--------------	--------------------	--------------------

**5. COFFS HARBOUR** **55 439(-3.1)** **57 541(-2.9)**

Less part SA2 Woolgoolga-Arrowarra (Mullaway and all parts north)

SA1's 1109115-18;21-24;29-30;32 To Clarence	-2 954	-3 071
---	--------	--------

<b>Plus SA2 Urunga Ex Oxley</b>	<b>+3 790</b>	<b>+3 833</b>
<b>Plus its share of SA2 Dorrigo SA1's 1108701;4-10;13</b>	<b>+1 758</b>	<b>+1 802</b>
<b>Ex Oxley</b>		
<b>TOTAL</b>	<b>58 043(1.5)</b>	<b>60 105(1.5)</b>

---

<b>6. OXLEY</b>	<b>57 268(0.1)</b>	<b>59 209(-0.1)</b>
<b>Less SA2 Urunga To Coffs Harbour</b>	<b>-3 790</b>	<b>-3 833</b>
<b>Less its share of SA2 Dorrigo SA1's 1108701;4-10;13</b>	<b>-1 758</b>	<b>-1 802</b>
<b>To Coffs Harbour</b>		
<b>Plus its share of SA2 Port Macquarie Region (North of Hastings River)</b>		
<b>SA1's 1116501-5 Ex Port Macquarie</b>	<b>+1 259</b>	<b>+1 269</b>
<b>(Also includes split SA1's 1116507;8;14)</b>	<b>+2</b>	<b>+2</b>
<b>Plus part SA2 Wauchope (King Creek;Rawdon island and Sancrox)</b>		
<b>SA1's 1116619-23 Ex Port Macquarie</b>	<b>+1 856</b>	<b>+1 952</b>
<b>Plus part SA2 Port Macquarie West (Fernbank creek and Thrumster)</b>		
<b>SA1 1116436 Ex Port Macquarie</b>	<b>+1 074</b>	<b>+1 903</b>
<b>TOTAL</b>	<b>55 911(-2.2)</b>	<b>57 541(-2.9)</b>
<b>7. PORT MACQUARIE</b>	<b>60 580(5.9)</b>	<b>63 710(7.5)</b>
<b>Less its share of SA2 Port Macquarie Region (North of Hastings River)</b>		
<b>SA1's 1116501-5 To Oxley</b>	<b>-1 259</b>	<b>-1 269</b>
<b>(Also includes split SA1's 1116507;8;14)</b>	<b>-2</b>	<b>-2</b>
<b>Less part SA2 Wauchope (King Creek;Rawdon island and Sancrox)</b>		
<b>SA1's 1116619-23 To Oxley</b>	<b>-1 856</b>	<b>-1 952</b>
<b>Less part SA2 Port Macquarie West (Fernbank creek and Thrumster)</b>		
<b>SA1 1116436 To Oxley</b>	<b>-1 074</b>	<b>-1 903</b>
<b>TOTAL</b>	<b>56 389(-1.4)</b>	<b>58 584(-1.1)</b>
<b>8. MYALL LAKES</b>	<b>57 649(0.8)</b>	<b>60 292(1.8)</b>

**No Change**

9. **PORT STEPHENS** **56 892(-0.5)** **58 970(-0.5)**

**No Change**

10. **MAITLAND** **61 476(7.5)** **65 682(10.9)**

Less part SA2 Branxton-Greta-Pokolbin (Its share)

SA1's 1170703;16 **To Upper Hunter** **-201** **-217**

Less part SA2 Maitland West (south;west and north of but not including the suburb of Rutherford) SA1's 1111706-8; 26-27;31-32 **-2 113** **-2 567**

**To Upper Hunter**

Less part SA2 Maitland North (Bulwarra Heights and north and north-west of that suburb and the Hunter River SA1's1111602-6;16 **To Upper Hunter** **-2 584** **-2 670**

Less part SA2 Maitland (Gillieston Heights) **-2 864** **-3 115**

SA1's 1111403;5;13-14 **To Upper Hunter**

**TOTAL** **53 714(-6.1)** **57 113(-3.6)**



Central Coast-Hunter	23/03/20 (Var)	17/04/23 (Var)
1. Gosford	56 715(-0.8)	58 949 (-0.5)
2. Terrigal	57 511(0.6)	58 864 (-0.6)
3.The Entrance	56 026(-2.0)	57 793 (-2.5)
4.Wyong	57 913(1.3)	61 379 (3.6)
5.Lake Macquarie	58 541(2.4)	62 018 (4.7)
6.Swansea	56 603(-1.0)	58 074 (-2.0)
7.Charlestown	55 665(-2.7)	56 401 (-4.8)
8.Cessnock	59 513(4.1)	63 230 (6.7)
9.Wallsend	59 509(4.1)	61 033 (3.0)
10.Newcastle	59 435(3.9)	61 920 (4.5)
<b>Totals</b>	<b>577 431 (9.6)</b>	<b>599 661 (12.2)</b>

	<u>23/03/20</u>	<u>17/04/23</u>
1. <u>GOSFORD</u>	<u>56 715(-0.8)</u>	<u>58 949(-0.5)</u>
No Change		
2. <u>TERRIGAL</u>	<u>57 511(0.6)</u>	<u>58 864(-0.6)</u>
No Change		
3. <u>THE ENTRANCE</u>	<u>56 026(-2.0)</u>	<u>57 793(-2.5)</u>
Plus part SA2 Chittaway Bay-Tumbi Umbi	+2 342	+2 423
(Balance of Berkley Vale) SA1's 1104709-11;18-19;22;31 Ex Wyong		
<b>TOTAL</b>	<b>58 368(2.1)</b>	<b>60 216(1.6)</b>
4. <u>WYONG</u>	<u>57 913(1.3)</u>	<u>61 379(3.6)</u>
Less part SA2 Chittaway Bay-Tumbi Umbi	-2 342	-2 423
(Balance of Berkley Vale) SA1's 1104709-11;18-19;22;31 To The Entrance		
<b>TOTAL</b>	<b>55 571(-2.8)</b>	<b>58 956(-0.5)</b>

<b>5. LAKE MACQUARIE</b>	<b>58 541(2.4)</b>	<b>62 018(4.7)</b>
Less part SA2 Glendale-Cardiff-Hillsborough	-1 041	-1 095
(Entire suburb of Argenton) SA1's 1120905-6;40 To Cessnock		
Less part SA2 Warners Bay-Boolaroo	-1 910	-1 949
(Balance of the suburb of Warners Bay and entire suburb of Lakelands)		
SA1's 1121404;6;9;11-13;20 To Charlestown		
<b>TOTAL</b>	<b>55 590(-2.8)</b>	<b>58 974(-0.5)</b>

<b>6. SWANSEA</b>	<b>56 603(-1.0)</b>	<b>58 074(-2.0)</b>
-------------------	---------------------	---------------------

No Change

<b>7. CHARLESTOWN</b>	<b>55 665(-2.7)</b>	<b>56 401(-4.8)</b>
Plus part SA2 Warners Bay-Boolaroo	+1 910	+1 949
(Balance of the suburb of Warners Bay and entire suburb of Lakelands)		
SA1's 1121404;6;9;11-13;20 Ex Lake Macquarie		
Plus part SA2 Adamstown-Kotara (its share of suburb of Adamstown)		
SA1's 1122212;19-20;38-39 Plus 3/3 from SA split 1122210 Ex Newcastle		
	+1 219	+1 329
<b>TOTAL</b>	<b>58 794(2.8)</b>	<b>59 679(0.7)</b>

<b>8. CESSNOCK</b>	<b>59 513(4.1)</b>	<b>63 230(6.7)</b>
Less Its share of SA2 Pokolbin-Greta-Branxton	-6 560	-7 590
SA1's 1110701-10;12-15;19-20;22-26 <b>To Upper Hunter</b>		
Less its share of SA2 Singleton Region (its share of Singleton LGA)		
SA1's 11301-2;4-5	-807	-826
And split SA1's 1111303;1111306	-4	-4
<b>To Upper Hunter</b>		
Plus part SA2 Glendale-Cardiff-Hillsborough	+1 041	+1 095
(Entire suburb of Argenton) SA1's 1120905-6;40 <b>Ex Lake Macquarie</b>		
Plus part SA2 Glendale-Cardiff-Hillsborough	+2 953	+3 017
(Entire suburb of Glendale) SA1's 1120907-10;20-23;35;38 <b>Ex Wallsend</b>		
<b>TOTAL</b>	<b>56 136(-1.9)</b>	<b>58 922(-0.6)</b>
<b>9. WALLSEND</b>	<b>59 509(4.1)</b>	<b>61 033(3.0)</b>
Less part SA2 Glendale-Cardiff-Hillsborough	-2 953	-3 017
(Entire suburb of Glendale) SA1's 1120907-10;20-23;35;38 <b>To Cessnock</b>		
Plus part SA2 Lambton-New Lambton	+2 476	+2 504
(Newcastle's share of the suburb of New Lambton) <b>Ex Newcastle</b>		
SA1's 1122505-6;14-16;39-43		
<b>TOTAL</b>	<b>59 032(3.2)</b>	<b>60 520(2.2)</b>

<b>10. NEWCASTLE</b>	<b>59 435(3.9)</b>	<b>61 920(4.5)</b>
Less part SA2 Lambton-New Lambton	-2 476	-2 504
(Newcastle's share of the suburb of New Lambton) <b>To Wallsend</b>		
SA1's 1122505-6;14-16;39-43		
Less part SA2 Adamstown-Kotara (its share of suburb of Adamstown)		
SA1's 1122212;19-20;38-39 Plus 3/3 from SA split 1122210 <b>To Charlestown</b>		
	-1 219	-1 329
<b>TOTAL</b>	<b>55 740(-2.5)</b>	<b>58 087(-2.0)</b>

Central and N W NSW	23/03/20 (Var)	17/04/23 (Var)
<b>1. Upper Hunter</b>	<b>55 666(-2.7)</b>	<b>57 488 (-3.0)</b>
<b>2. Tamworth</b>	<b>56 579(-1.1)</b>	<b>58 713 (-0.9)</b>
<b>3.Northern Tablelands</b>	<b>54 988(-3.9)</b>	<b>55 764 (-5.9)</b>
<b>4.Barwon</b>	<b>54 093(-5.4)</b>	<b>54 830 (-7.5)</b>
<b>5.Dubbo</b>	<b>55 872(-2.3)</b>	<b>57 360 (-3.2)</b>
<b>6.Bathurst</b>	<b>57 031(-0.3)</b>	<b>59 083 (-0.3)</b>
<b>7.Orange</b>	<b>56 894(-0.5)</b>	<b>58 952 (-0.5)</b>
<b>Totals</b>	<b>391 103 (-16.2)</b>	<b>402 190 (-21.1)</b>

	<u>23/03/20</u>	<u>17/04/23</u>
<b>1. UPPER HUNTER (Rename Singleton)</b>	<b>55 666(-2.7)</b>	<b>57 488(-3.0)</b>
Less part SA2 Mudgee Region East <b>To Dubbo</b>	<b>-251</b>	<b>-253</b>
SA1's 1107302;13-14		
Less part SA2 Mudgee Region East <b>To Dubbo</b>	<b>-665</b>	<b>-669</b>
SA1's 1107409-10;15-16;19		
Less part SA2 Scone Region (Cassillis;Merriwa and Gungai and parts west of Scone		
SA1's 1112914-20;23 <b>To Dubbo</b>	<b>-1 963</b>	<b>-1 984</b>
Less part SA2 Scone Region (All west and north of Scone)		
SA1's112905-13; 21-22 <b>To Tamworth</b>	<b>-2 555</b>	<b>-2 594</b>
NB Upper Hunter retains the town of Aberdeen(1112901-4)		
Less its share of SA2 Quirindi (Liverpool Plains Shire)	<b>-4 203</b>	<b>-4 241</b>
<b>To Tamworth</b>		
Less SA2 Scone <b>To Tamworth</b>	<b>-4 161</b>	<b>-4 449</b>
Plus Its share of SA2 Pokolbin-Greta-Branxton	<b>+6 560</b>	<b>+7 590</b>
SA1's 1110701-10;12-15;19-20;22-26 <b>Ex Cessnock</b>		
Plus its share of SA2 Singleton Region (its share of Singleton LGA)		
SA1's 11301-2;4-5	<b>+807</b>	<b>+826</b>
And split SA1's 1111303;1111306	<b>+4</b>	<b>+4</b>

**Ex Cessnock****Plus** part SA2 Branxton-Greta-Pokolbin (Its share)SA1's 1170703;16 **Ex Maitland** **+201** **+217****Plus** part SA2 Maitland West (south;west and north of but not including the suburb ofRutherford) SA1's 1111706-8; 26-27;31-32 **+2 113** **+2 567****Ex Maitland****Plus** part SA2 Maitland North (Bulwarra Heights and north and north-west of that suburb and the Hunter River SA1's1111602-6;16 **Ex Maitland** **+2 584** **+2 670****Plus** part SA2 Maitland (Gillieston Heights) **+2 864** **+3 115**SA1's 1111403;5;13-14 **Ex Maitland****TOTAL** **57 001(-0.3)** **60 287(1.8)****2. TAMWORTH** **56 579(-1.1)** **58 713(-0.9)****Less** SA2 Gunnedah **To Barwon** **-6 726** **-7 040****Less** its share of SA2 Gunnedah Region **To Barwon** **-2 308** **-2 359****Plus** part SA2 Scone Region (All west and north of Scone)SA1's112905-13; 21-22 **Ex Upper Hunter** **+2 555** **+2 594****Plus** its share of SA2 Quirindi (Liverpool Plains Shire) **+4 203** **+4 241****Ex Upper Hunter****Plus** SA2 Scone **Ex Upper Hunter** **+4 161** **+4 449****TOTAL** **58 464(2.2)** **60 058(1.4)****3. NORTHERN TABLELANDS** **54 988(-3.9)** **55 764(-5.9)****Plus** SA2 Tenterfield (entire Shire) **Ex Lismore****+4 908** **+5 053****TOTAL** **59 896(4.7)** **60 817(2.7)**

<b>4. BARWON</b>	<b>54 093(-5.4)</b>	<b>54 830(-7.5)</b>
<b>Less</b> Its share SA2 Condobolin (entire Lachlan Shire)		
<b>To Cootamundra</b>	<b>-4 381</b>	<b>-4 436</b>
<b>Plus SA2 Gunnedah Ex Tamworth</b>	<b>+6 726</b>	<b>+7 040</b>
<b>Plus its share of SA2 Gunnedah Region Ex Tamworth</b>	<b>+2 308</b>	<b>+2 359</b>
<b>TOTAL</b>	<b>58 746(2.7)</b>	<b>59 793(0.9)</b>

<b>5. DUBBO</b>	<b>55 872(-2.3)</b>	<b>57 360(-3.2)</b>
<b>Plus part SA2 Mudgee Region East Ex Upper Hunter</b>	<b>+251</b>	<b>+253</b>
SA1's 1107302;13-14		
<b>Plus part SA2 Mudgee Region East Ex Upper Hunter</b>	<b>+665</b>	<b>+669</b>
SA1's 1107409-10;15-16;19		
<b>Plus part SA2 Scone Region (Cassillis;Merriwa and Gungai and parts west of Scone</b>		
SA1's 1112914-20;23 Ex Upper Hunter	+1 963	+1 984
<b>TOTAL</b>	<b>58 751(2.7)</b>	<b>60 266(1.7)</b>

<b>6. BATHURST</b>	<b>57 031(-0.3)</b>	<b>59 083(-0.3)</b>
--------------------	---------------------	---------------------

**No Change**

<b>7. ORANGE</b>	<b>56 894(-0.5)</b>	<b>58 952(-0.5)</b>
------------------	---------------------	---------------------

**No Change**

Southern Inland	23/03/20 (Var)	17/04/23 (Var)
1. Murray	55 642(-2.7)	55 921 (-5.6)
2.Wagga Wagga	55 534(-2.9)	57 344 (-3.2)
3.Albury	58 029(1.5)	60 035 (1.3)
4. Cootamundra	53 064(-7.2)	53 557 (-9.6)
5.Goulburn	58 084(1.6)	60 287 (1.8)
Totals	280 353 (-9.8)	287 144 (-15.3)

	<u>23/03/20</u>	<u>17/04/23</u>
<b>1. MURRAY</b>	<b>55 642(-2.7)</b>	<b>55 921(-5.6)</b>
Plus part SA2 Griffith Region		
SA1 1125706 Ex Cootamundra	+56	+53
Plus Its share of SA2 Narrandera (Shire of Narrandera)		
Ex Cootamundra	+4 250	+4 239
<b>TOTAL</b>	<b>59 948(4.8)</b>	<b>60 213(1.6)</b>
<b>2. WAGGA WAGGA</b>	<b>55 534(-2.9)</b>	<b>57 344(-3.2)</b>
Plus SA2 Gundagai (former Shire) Ex Cootamundra	+2 658	+2 664
<b>TOTAL</b>	<b>58 192(1.7)</b>	<b>60008(1.3)</b>
<b>3. ALBURY</b>	<b>58 029(1.5)</b>	<b>60 035(1.3)</b>
No Change		
<b>4. COOTAMUNDRA</b>	<b>53 064(-7.2)</b>	<b>53 557(-9.6)</b>
Less part SA2 Griffith Region		
SA1 1125706 To Murray	-56	-53



<b>Less</b> Its share of SA2 Narrandera (Shire of Narrandera)		
<b>To Murray</b>	<b>-4 250</b>	<b>-4 239</b>
<b>Less</b> SA2 Gundagai (former Shire) <b>To Wagga Wagga</b>	<b>-2 658</b>	<b>-2 664</b>
<b>Plus</b> Its share SA2 Condobolin (entire Lachlan Shire)		
<b>Ex Barwon</b>	<b>+4 381</b>	<b>+4 436</b>
<b>Plus</b> Goulburn's share of Hilltops LGA:		
Part SA2 Young Region SA1's 1154401;5;8;10;17-18	<b>+1 752</b>	<b>+1 762</b>
<b>Ex Goulburn</b>		
<b>Plus</b> part SA2 Yass Region SA1 1154206 <b>Ex Goulburn</b>	<b>+204</b>	<b>+202</b>
Goulburn's share of Upper Lachlan Shire:		
<b>Plus</b> part SA2 Yass Region SA1's 1154207;14;18;20	<b>+1 185</b>	<b>+1 216</b>
<b>Ex Goulburn</b>		
<b>Plus</b> part SA2 Goulburn Region <b>Ex Goulburn</b>	<b>+4 903</b>	<b>+4 918</b>
SA1's 1154003;5-6;8-11;14-15;17-19;21;24;26;30-31		
<b>TOTAL</b>	<b>58 525(2.3)</b>	<b>59 168(-0.2)</b>

<b>5 GOULBURN</b>	<b>58 084(1.6)</b>	<b>60 287(1.8)</b>
-------------------	--------------------	--------------------

<b>Less</b> Goulburn's share of Hilltops LGA:		
Part SA2 Young Region SA1's 1154401;5;8;10;17-18	<b>-1 752</b>	<b>-1 762</b>
<b>To Cootamundra</b>		
<b>Less</b> part SA2 Yass Region SA1 1154206 <b>To Cootamundra</b>	<b>-204</b>	<b>-202</b>
<b>Less</b> Goulburn's share of Upper Lachlan Shire:		
<b>Less</b> part SA2 Yass Region SA1's 1154207;14;18;20	<b>-1 185</b>	<b>-1 216</b>
<b>To Cootamundra</b>		
<b>Less</b> part SA2 Goulburn Region <b>To Cootamundra</b>	<b>-4 903</b>	<b>-4 918</b>
SA1's 1154003;5-6;8-11;14-15;17-19;21;24;26;30-31		

Plus part SA2 Queanbeyan Region (Its share of Bywong and Sutton plus all of Wamboin)

SA1's 1101104;27;30-36;39-40 Ex Monaro +2 821 +2 846

Plus part SA2 Bowral (suburb of Burradoo) +1 966 +1 984

SA1's 1128423-26;30 Ex Wollondilly

Plus part SA2 Southern Highlands (suburb of Woodlands north of Hume Motorway)

SA11128905 Ex Wollondilly +183 +189

Plus part SA2 Hill Top-Colo Vale (suburb of Colo Vale) Ex Wollondilly

SA1's 11208-11 +1 061 +1 100

Need to split SA1 1128515 (whole SA1 =375/380) at suburb boundary

Allocate to Goulburn only part SA1 1128515 within Colo Vale

+190 +190

**TOTAL** 56 261(-1.6) 58 498(-1.3)

GT 5 318 924(Q57 193) 5 509 652 (Q59 244)

-10% 51 473 53 319

+10% 62 912 65 168