

Wollondilly Shire Council, East Ward by-election

28 October 2017



Report on the conduct of the election

CONTENTS

Contents.....	2
Election timetable.....	3
Foreword.....	4
Overview	5
Conduct of the election	8
Services to candidates and political parties.....	17
Electoral staffing	18
Election costs	19
Appendices.....	20

© State of New South Wales through the New South Wales Electoral Commission, 2018. All rights reserved.

ELECTION TIMETABLE

Activity	Date
Local Government expenditure period commenced	Wednesday, 6 September 2017
Registration for candidates, third-party campaigners and official agents opened	Monday, 18 September 2017
Close of rolls*	Monday, 18 September 2017, 6.00pm
Close of nominations	Wednesday, 27 September 2017, 12noon
Registration of electoral material commenced	Wednesday, 27 September 2017
Close of registration of candidates	Wednesday, 27 September 2017
Pre-poll voting commenced	Monday, 16 October 2017
Registration of electoral material closed	Friday, 20 October 2017, 5.00pm
Close of registration of third-party campaigners	Friday, 20 October 2017
Postal voting applications closed	Monday, 23 October 2017, 5.00pm
Pre-poll voting finished	Friday, 27 October 2017, 6.00pm
Election day	Saturday, 28 October 2017
Local government expenditure period ended	Saturday, 28 October 2017
Return of postal votes closed	Monday, 30 October 2017, 6.00pm
Distribution of preferences	Tuesday, 31 October 2017
Declaration of the poll	Wednesday, 1 November 2017

* For nominations and roll printing purposes.

FOREWORD

I am pleased to present the NSW Electoral Commission's report on the conduct of the Wollondilly Council - East Ward Local Government by-election held on Saturday, 28 October 2017.

I would like to thank all NSWEC staff involved in providing the Wollondilly Council - East Ward Local Government by-election, as well as electors, the council, candidates, registered political parties and other stakeholders for their participation in this important event.

A handwritten signature in black ink that reads "John Schmidt". The signature is written in a cursive style with a large initial 'J' and 'S'.

John Schmidt
Electoral Commissioner
20 April 2018

OVERVIEW

By-election outcome

The candidate elected at the Wollondilly Council - East Ward by-election on Saturday, 28 October 2017 was Matt Smith with 3,485 votes, 32.39 per cent of first preference votes.

Candidates standing for election

Candidate name	Party affiliation
Wayne MEANI	Independent
Mick ZAMMIT	Independent
Matt SMITH	Independent
Laura EGAN-BURT	Independent

Cost data

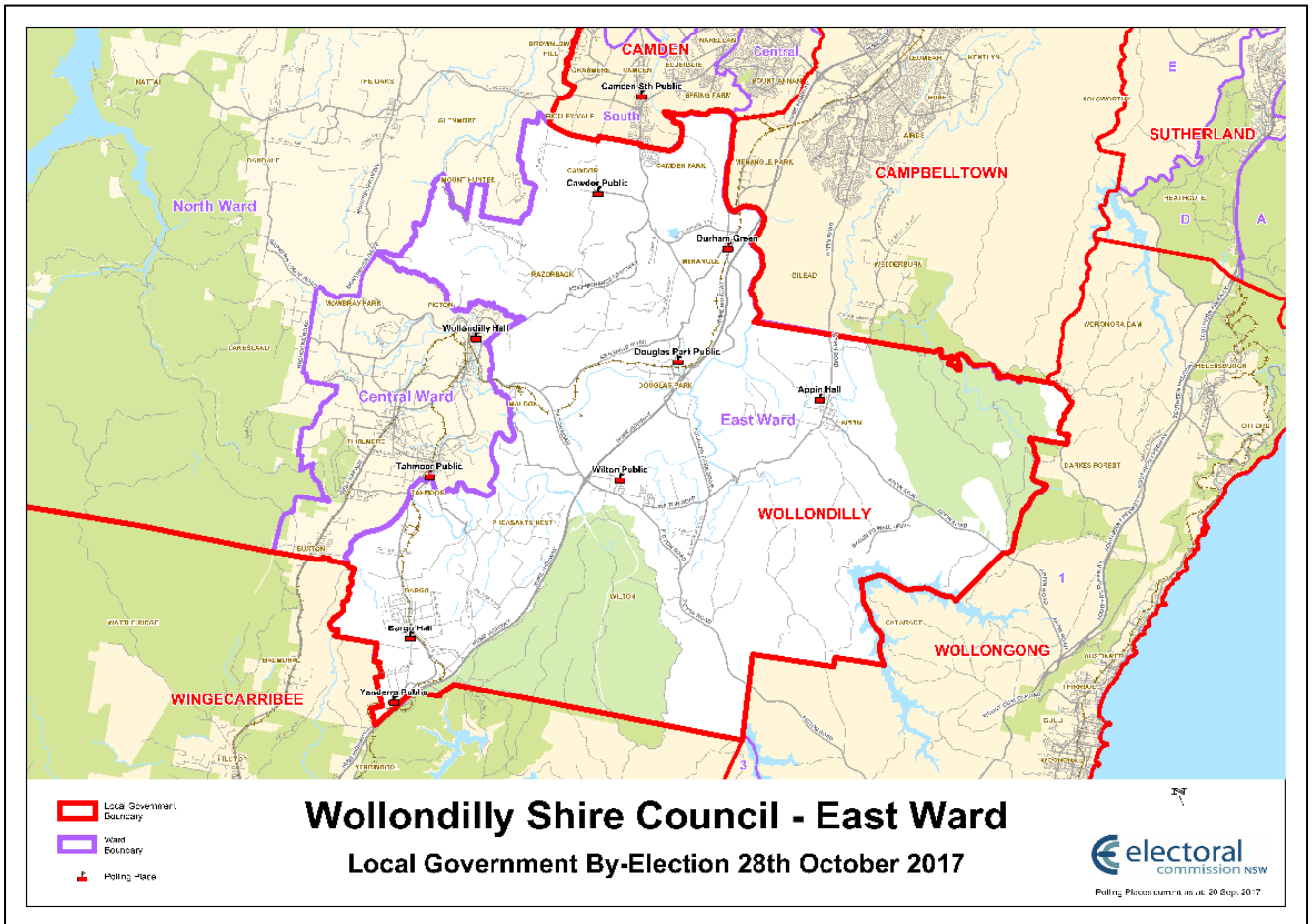
Cost of by-election	\$143,582
Cost per elector	\$10.69

By-election summary

Enrolment	
Total electors	13,430
Voting venues	
Pre-poll venues	2
Polling places	10
Voter turnout	
Formal votes	10,161
Informal votes	599
Total votes	10,760
Voter turnout rate	80.12%
Formality rate	94.43%
Non-voting penalty notices issued	2,357 ¹
Penalty notices issued as % of roll	17.55%
Voting options used by electors	
Ordinary	8,043
Postal	435
Pre-poll	2,155
Enrolment	97
Provisional/Silent	30
Candidates	
Total candidates	4

¹ A penalty notice is withdrawn if an elector provides a valid excuse for not voting. At the date of this report the enforcement process for failure-to-vote penalty notices for this by-election had not yet been completed.

Wollondilly Council - East Ward



CONDUCT OF THE ELECTION

Background

Wollondilly Council is a council divided into three wards with nine councillors. The by-election was called due to the resignation of Mr Ray Law and was for the election of one councillor.

Performance

The service standards in the Election Service Charter 2017 – 2020 were applied to the Wollondilly Council - East Ward by-election. In short, the NSWEC undertakes to:

- foster participation in the democratic process
- provide seamless service delivery
- be customer focussed and commercially minded
- be innovative and fast adaptors.

The Service Charter can be found at Appendix A.

Comparisons to 2016 Local Government elections

Comparative data on key indicators for the Wollondilly Council - East Ward Council in the 2017 by-election and the 2016 ordinary election.

Voter participation		
	2016 election	2017 by-election
Total electors	12,922	13,430
Formal votes	10,116	10,161
Informal votes	897	599
Total votes	11,013	10,760
Voter turnout	85.23%	80.12%
Informality	8.14%	5.57%
Election officials	64 (All wards)	22
Cost per elector	\$7.09	\$10.69

Communications

Advertising

The 2017 Local Government by-election advertising campaign for Wollondilly Council - East Ward by-election consisted of council specific statutory advertisements and non-statutory advertising. Non-statutory advertising included information about registering as a third-party campaigner or candidate under the *Election Funding, Expenditure and Disclosures Act 1981* (EFED Act).

Statutory campaign

Prior to the election the NSWEC consulted with Wollondilly Council to determine in which local newspapers the statutory advertisements, required under the legislation, were to be placed and the frequency of those placements.

Items covered in the statutory advertisements included:

- enrolment on residential and non-residential rolls
- nomination information
- candidates and polling place information
- election results.

Reproductions of these advertisements, and details of their placement in newspapers, can be viewed at Appendices B-D.

Social media

The NSWEC utilised social media to raise awareness of the election, promote voter participation, and communicate the responsibilities of political participants.

There were five Facebook posts and five tweets published for the by-election covering the topics of:

- nominations and registrations
- the announcement of candidates
- pre-poll and postal voting details
- election campaign finance rules.

The Facebook posts and tweets were viewed a total of 28,240 times.

The top performing tweet and Facebook post are shown on the following page.



NSWElectoralCom @NSWElectoralCom · 27 Oct 2017

It's Election Day for the Wollondilly Shire Council - East Ward By-election! Find your nearest polling place here: ow.ly/DqMZ30fOZra

**WOLLONDILLY SHIRE COUNCIL
EAST WARD BY-ELECTION
THIS SATURDAY, 28 OCTOBER**

**REMEMBER
TO VOTE!**

www.elections.nsw.gov.au

1



NSW Electoral Commission

28 October 2017 · 🌐

It's Election Day for the Wollondilly Shire Council - East Ward By-election! Polling places are open until 6pm today, 28 October. Find your nearest polling place here: www.elections.nsw.gov.au/.../wollondilly_shire.../polling_places

**WOLLONDILLY SHIRE COUNCIL
EAST WARD BY-ELECTION
THIS SATURDAY, 28 OCTOBER**

**REMEMBER
TO VOTE!**

www.elections.nsw.gov.au

Like Comment Share

Direct communications with political participants

Direct communications to candidates, third-party campaigners and official agents were made for the by-election using email and letters. The direct communications covered the topics of:

- confirmation of candidate and third-party campaigner registrations
- advice to nominated candidates about the requirements to appoint an official agent
- confirmation of official agent registrations
- advice to official agents about the rules for managing the election campaign finances of candidates and third-party campaigners.

Website

A NSWEC website was specifically setup for the by-election for stakeholders to source information on:

- the election timetable
- election employment opportunities
- enrolment requirements and online enrolment confirmation
- methods for voting
- political parties
- nomination and registration of candidates, third-party campaigners and donors
- political donations
- list of nominated candidates
- polling place lookup facility
- election results.

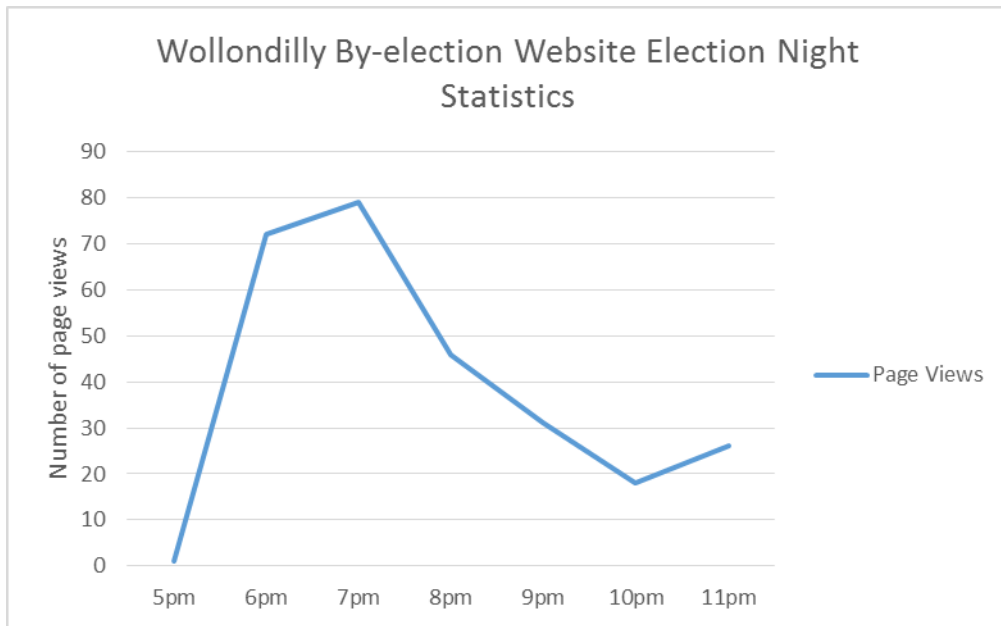
An enrolment search facility on the NSWEC website was available to assist electors to verify their enrolment information.

Polling place information provided on the website included accessibility information for electors with a disability.

Wollondilly Council provided a link on its website to the NSWEC site. The NSWEC's website experienced 4,963 unique page views in the month leading up to the election.

Use of the NSWEC's website is typically greatest on election night when users seek information on results. The following graph provides a picture of usage over the period from close of polling to midnight on election night for the by-election. A total of 1,210 page views were recorded on election day.

Graph 1: Wollondilly Council - East Ward by-election – Usage of the NSWEC Website for Poll Results, 28 October 2017



Registrations

Registration of candidates closed on Wednesday, 27 September 2017. Registration of third-party campaigners closed on Friday 20 October 2017.

Four candidates were registered under the EFED Act for the by-election. Four candidates appointed an official agent as required under the EFED Act.

There were no third-party campaigners registered for the by-election. Following the declaration of the polls, we advised the elected candidate of his obligations under the EFED Act as an elected member. The elected member was designated by the NSWEC as his own official agent (as an elected member) and has an obligation to disclose on an annual basis (during his term as a councillor) any political donations made or received and electoral expenditure incurred.

Nominations

Nominations closed at noon on Wednesday, 27 September 2017.

A total of four nominations were received by close of nominations.

The draw for ballot paper position, held at 2.00pm on 27 September 2017, was conducted by the Returning Officer at the Returning Officer's office.

For a nomination to be accepted by the Returning Officer, candidates were required to complete a nomination form and a Candidate Information Sheet. Candidates were also required to submit a statistics form and pay a nomination deposit of \$125 to the Returning Officer.

The nomination deposit is refunded to candidates if:

- a candidate is elected or receives at least four per cent of the total first preference votes;
- in a group, any one of the group is elected or receives at least four per cent of the total first preference votes; or
- the election is uncontested.

Rolls

Residential roll

In New South Wales, enrolment and voting are compulsory at all Federal, State and Local Government elections. The New South Wales electoral roll is managed by the NSWEC in conjunction with the Australian Electoral Commission.

Legislation provides that for Local Government elections the electoral roll closes on the 40th day before the day of the election. Any person who was on the roll when it closed at 6.00pm on Monday, 18 September 2017 was required to vote.

There were 13,430 electors on the residential electoral roll for Wollondilly Council - East Ward. This was an increase of 508 electors from the number on the roll for the Local Government Ordinary Elections in September 2016.

Non-residential roll

The non-residential roll is comprised of the roll of non-residential electors and the roll of occupiers and rate-paying lessees. The non-residential roll lapses after each election. Inclusion on the non-residential roll of electors is available to electors who pay rates to the council on property they own but do not occupy, as well as people who occupy or lease property. Under the *Local Government Act 1993*, the council's General Manager is responsible for compiling and maintaining the non-residential roll of electors.

There were no electors on the non-residential roll for Wollondilly Council - East Ward for the 2017 by-election.

Voting

Method of voting

Section 285 *Local Government Act 1993* prescribes that the voting system in a contested election of a councillor or councillors is to be:

- optional preferential if the number of councillors to be elected is one; or
- proportional representation if the number of councillors to be elected is two or more.

For this by-election, optional preferential was the method used. A reproduction of the ballot paper is shown at Appendix E.

Absent voting

Unlike State and Federal elections, absent voting is not available at NSW Local Government elections for electors who are outside their council area or ward on election day.

Early voting

Pre-poll voting

Pre-poll voting opened at 8.00am on Monday, 16 October 2017 and closed on Friday, 27 October 2017. The pre-poll locations were:

- Appin Pre-Poll, 40 Sportsground Parade, Appin NSW 2560
- Wollondilly RO Office, 60 Railside Avenue, Bargo NSW 2574

Postal voting

Electors who are registered as a Registered General Postal Voter for NSW State Elections are not required to register again for Local Government elections and were therefore automatically sent postal vote ballot papers.

Applications for postal voters opened on nomination day with electors able to obtain applications from the NSWEC website, the NSWEC head office or the Returning Officer's office. Applications for postal voting closed on Monday, 23 October 2017.

In order to be admitted to the count postal votes needed to be received by the Returning Officer by 6.00pm on Monday, 30 October 2017. Of 566 postal votes issued, 437 were accepted, 66 were rejected and 63 were not scrutinised because they were either returned too late or not returned at all.

Election day voting

Polling places

Securing appropriate premises for polling places can be difficult. The NSWEC does not own facilities within council areas. The pool of available rental premises is limited by the short-term nature of the lease and the NSWEC's space, accessibility, location and workplace health and safety requirements.

The NSWEC provided council with a draft list of proposed polling places to be used at this election. Feedback from the council was taken into consideration prior to the final selection of polling places.

As far as practically possible, the NSWEC aimed to provide accessible and appropriately sited polling places for the by-election. Information was provided to assist electors with mobility issues or other disabilities to locate the most suitable polling place. This access information was provided on the NSWEC's website and by NSWEC staff.

There were 10 polling places across the Wollondilly Council - East Ward area on election day. Of those, two were fully wheelchair accessible and eight were accessible with assistance. The NSWEC website provided details of which polling places were accessible with assistance and the restrictions on accessibility where relevant. A list of polling places and their accessibility rating can be viewed at Appendix F.

Polling places were open to electors from 8.00am to 6.00pm on election day.

Counting the votes

On election night all polling places conducted an initial sort and count of first preference votes. At the Returning Officer's office, declaration (i.e. postal and pre-poll) votes are opened, sorted and first preferences are counted. The count results were placed on the NSWEC website on election night from 6.00pm onwards.

The successful candidate was declared elected by the Returning Officer at 3.00pm on Wednesday, 1 November 2017, following the statutory 24-hour period required for any recount requests.

Once the declaration of the election result had been signed by the Returning Officer, copies of the declaration were provided to the Electoral Commissioner, the Council's General Manager and the Chief Executives of both the Office of Local Government and Local Government NSW. In addition, the Returning Officer advised all candidates by phone, email or SMS that the election results were available on the NSWEC website. Election results were also published in local newspapers.

Non-voters

Failure to vote

Under electoral legislation, the NSWEC is required to issue 'failure to vote' notices to those electors whose names were not marked off the electoral roll as having voted or as having provided a valid excuse.

All electoral rolls marked at polling places and in the Returning Officer's office were scanned after election day to create a list of non-voters. The penalty for failing to vote without a valid reason at a Local Government election is \$55.00.

For this election, 2,357 penalty notices were issued within the three-month period after election day.²

² A penalty notice is withdrawn if an elector provides a valid excuse for not voting. At the date of this report the enforcement process for failure-to-vote penalty notices for this by-election had not yet been completed.

SERVICES TO CANDIDATES AND POLITICAL PARTIES

Candidate information

A candidate information presentation was available on the NSWEC website to assist prospective candidates in their preparation for the election.

The presentation provided prospective candidates with the opportunity to familiarise themselves with the candidate process. Major topics covered in the presentation include:

- the election timetable
- candidate eligibility criteria and how to nominate
- groups of candidates and political party names on ballot papers
- campaigning (election advertising, 'how-to-vote' material and public scrutiny of candidates)
- complaints handling by NSWEC
- voting and counting ballot papers
- scrutineers
- election funding obligations.

The NSWEC *Handbook for Parties, Groups, Candidates and Scrutineers*, which outlines relevant electoral processes and procedures for local government elections, was also made available to stakeholders.

Information about election processes and election campaign finance rules was also provided to candidates, political parties and others who made telephone or email enquiries.

A fact sheet for local government by-elections was published on the website to support candidates and other political participants understand the requirements for managing political donations and electoral expenditure.

How-to-vote material

All electoral material to be distributed by candidates or their representatives on election day must be registered by the NSWEC. Registration does not apply to posters, whether they are displayed before or on election day, nor is it required for material to be distributed before election day.

Candidates are required to provide an application form and a copy of each item to be registered. The NSWEC provided candidates with guidelines to assist them to meet the registration requirements. A candidate help line was also set up by the NSWEC to aid candidates.

ELECTORAL STAFFING

Returning Officer

The Returning Officer had a number of responsibilities central to the running of the election, including:

- set up and decommissioning of a temporary office
- training of office staff and polling place managers
- making arrangements for voting at polling places
- issuing and processing postal and pre-poll votes
- dealing with enquiries and complaints from candidates and the public
- processing candidate nominations
- counting of votes and declaring the result of the election.

The Returning Officer's office for the Wollondilly Council - East Ward by-election was located at 60 Railside Avenue, Bargo NSW 2574.

Returning Officer Support Officer

A Returning Officer Support Officer was appointed in order to provide support to the Returning Officer on electoral matters and procedures in the conduct of the election.

Staffing

Staffing is a significant cost for elections and, as such, the NSWEC recognises the importance of accurately predicting the number of required staff while taking into consideration the associated costs without compromising the level of service to electors.

The level of staffing required for the by-election varied during the different phases of the election. Staff were employed to undertake a variety of tasks including:

- office setup
- packing materials for each polling place
- registration, distribution and receipt of postal votes
- operation of pre-poll voting
- counting of the votes
- office pack-up.

All polling places have a minimum of two staff, one of whom is the polling place manager.

ELECTION COSTS

Councils are required to meet the costs of conducting their elections. While the NSW Government does not provide direct funding for local government elections, some NSWEC services required for local government elections, such as enrolment and non-voting services, are provided by the NSWEC at no cost. It should also be noted that services provided to candidates, political parties and others regarding the requirements of the EFED Act are provided by the NSWEC at no cost.

Key cost drivers for the election included:

- election officials wages
- office accommodation for the Returning Officer
- information and technology support
- polling places
- number of electors in council area
- newspaper and elector brochure advertising
- printing/materials for polling places.

The final cost of NSWEC conducting the election was \$143,582 (GST exclusive).

This was made up of election staffing \$84,586; venues \$12,132; ballot papers and electoral rolls \$3,845; other miscellaneous items \$33,618 and election management fee \$9,401. The cost per elector was \$10.69.

APPENDICES

Appendix A: Election Service Charter 2017 - 2020	21
Appendix B: Wollondilly Council - East Ward by-election – nominations and registration advertisement.....	22
Appendix C: Wollondilly Council - East Ward by-election – notice of election advertisement.....	23
Appendix D: Wollondilly Council - East Ward by-election – declaration of poll advertisement	24
Appendix E: Wollondilly Council - East Ward by-election – ballot paper	25
Appendix F: Wollondilly Council - East Ward by-election - polling places and accessibility.....	26

Appendix A: Election Service Charter 2017 - 2020



Election Service Charter 2017 - 2020

GOALS	TO BE ACHIEVED BY:	SUCCESS MEASURED BY:
Foster participation in the democratic process	<ul style="list-style-type: none"> • Conducting impartial and fair elections in accordance with the law • Providing services and information to enable all election participants to participate fully including communities with historically lower participation rates • Communicating election information in ways that encourage awareness and engagement • Supporting events and activities that encourage participation in democracy 	<ul style="list-style-type: none"> • Election participants report conduct of election as impartial and fair and without barriers to participation • Election participation equals or exceeds prior election levels • Formality rates equal or exceed prior election levels • There are no Court challenges to declared results
Provide seamless service delivery	<ul style="list-style-type: none"> • Providing comprehensive services including: <ul style="list-style-type: none"> – information services – enrolment services – voting options including pre-poll and technology enabled voting – location and accessibility of polling places – services to assist those with particular needs – responsibilities and entitlements of candidates, groups and political parties including funding and disclosure requirements • Providing efficient services to meet needs of participants according to legislative mandate • Providing election services in timely, efficient and professional manner 	<ul style="list-style-type: none"> • Stakeholders feel well informed about election events • Election participants report satisfaction with the NSWEC's electoral services
Be customer focussed and commercially minded	<ul style="list-style-type: none"> • Understanding the needs of our stakeholders and users of our election services through liaison, consultation and structured feedback • Delivering well organised, reliable and quality elections • Ensuring elections are provided on a competitive basis 	<ul style="list-style-type: none"> • Participants report satisfaction with NSWEC's services and election staff • Those entities using the NSWEC to conduct elections report satisfaction with services provided and see these are representing value • Costs of providing elections are recovered • The NSWEC actively seeks feedback on its services
Be innovative and fast adaptors	<ul style="list-style-type: none"> • Utilising new technologies to increase convenience for those participating in elections within the legislative mandate while maintaining integrity of the election and security of information • Review developments in election services and funding and disclosure across Australia and internationally for possible application to NSW 	<ul style="list-style-type: none"> • The NSWEC is seen as seeking to adapt its services, within legislative requirements, to meet participants' needs • The NSWEC advises Government of innovations that will strengthen the democratic system and improve administration of elections

PM_2019_APR18

Appendix B: Wollondilly Council - East Ward by-election – nominations and registration advertisement



WOLLONDILLY SHIRE COUNCIL – EAST WARD BY-ELECTION SATURDAY, 28 OCTOBER 2017

A by-election will be held in the Wollondilly Shire Council – East Ward area on Saturday, 28 October 2017 to elect one councillor.

Nominate as a candidate

If you intend to nominate as a candidate, it is important that you read this notice. As a candidate, you have certain obligations and responsibilities under law. Check the website www.elections.nsw.gov.au for further details.

How to nominate

To nominate for councillor, you must lodge a nomination form and \$125 nomination deposit by 12 noon Wednesday, 27 September 2017 with the returning office.

Candidate Information sheets:

Every candidate is required to lodge the candidate information sheet which is included in the nomination form.

Where to get a nomination form

Nomination forms and other important nomination and electoral information are available from the Returning Officer or the NSW Electoral Commission website: www.elections.nsw.gov.au.

Where and when to nominate

Your nomination form and deposit must be lodged at the returning office, 60 Rainside Avenue, Bargo, during council business hours from Monday, 18 September 2017 to 12 noon Wednesday, 27 September 2017.

You must also register as a candidate for funding purposes

In addition to being nominated, candidates must be registered and have an official agent before accepting

political donations or making payments for electoral expenditure.

The last date for registration is 12 noon, **Wednesday, 27 September 2017**. If you registered as a candidate for a previous election, you must reapply to be registered for this by-election. Nomination forms, registration forms, and the Handbook for Parties, Groups, Candidates and Scrutineers – Local Government elections are available from the Returning Officer or from the NSW Electoral Commission website.

Nomination enquiries should be directed to the Candidate Helpdesk: 1300 088 942 and registration enquiries to our funding and disclosure team on 1300 022 011.

Candidate Information Presentation

A candidate information presentation can be found at www.elections.nsw.gov.au.

As a candidate you will have legal obligations and responsibilities. The presentation covers:

- the election timetable, candidate nominations and registrations, election advertising and how-to-vote material, voting and formality, vote counting, scrutineering; and
- appointment of official agents, campaign accounts, political donations, campaign expenditure and disclosure obligations.

Information: www.elections.nsw.gov.au or 1300 088 942

For enquiries in languages other than English call our interpreting service on 13 14 50


For hearing and speech impaired enquiries, call us via the National Relay Service on 13 36 77

RM284251

Nominate & Register as a TPC or candidate

Macarthur Chronicle	Tuesday, 12 September 2017
Wollondilly Advertiser	Wednesday, 13 September 2017
Camden-Narellan Advertiser	Wednesday, 13 September 2017
Campbelltown-Macarthur Advertiser	Wednesday, 13 September 2017

Appendix C: Wollondilly Council - East Ward by-election – notice of election advertisement



WOLLONDILLY SHIRE COUNCIL – EAST WARD BY-ELECTION SATURDAY, 28 OCTOBER 2017

A by-election will be held in the Wollondilly Shire Council – East Ward area on Saturday, 28 October 2017 to elect one councillor.

If you are enrolled in the Wollondilly Shire Council – East Ward area, you must vote. To check your enrolment details, visit www.elections.nsw.gov.au or call 1300 135 736.

Voting on election day
Voting will take place on Saturday, 28 October 2017 between the hours of 8am and 6pm.
A list of polling places is available by visiting www.elections.nsw.gov.au or calling 1300 135 736.

Voting before election day
You may be entitled to a postal or pre-poll vote. For details, visit our website or call us.

Voting early in person
You can vote early in person at the following locations:
Returning Officer's Office, 60 Railside Avenue, Bargo NSW 2574

- Monday, 16 October to Friday, 20 October 2017: 8:00am to 5:00pm
- Saturday, 21 October 2017: 9:00am to 5:00pm
- Monday, 23 October to Thursday, 26 October 2017: 8:00am to 5:00pm
- Friday, 27 October 2017: 8:00am to 6:00pm

Appin AIS Community Hall, 40 Sportsground Parade, Appin NSW 2560

- Saturday, 21 October 2017: 9:00am to 5:00pm
- Monday, 23 October to Friday, 27 October 2017: 8:00am to 4:00pm

Voting by Post
You can apply online for a postal vote from www.elections.nsw.gov.au or by calling 1300 135 736. Your application must be completed and received by the Returning Officer no later than 5pm Monday, 23 October 2017.

Candidates

Name of candidate	Party Affiliation
MEANI Wayne	Independent
ZAMMIT Mick	Independent
SMITH Matt	Independent
EGAN-BURT Laura	Independent

CANDIDATE INFORMATION SHEETS
Each candidate's information sheet is available for viewing at www.elections.nsw.gov.au or at the Returning Officer's office.

Voting is compulsory
Voting is compulsory for all electors of the Wollondilly Shire Council – East Ward area. The penalty for not voting is \$55.

Information: www.elections.nsw.gov.au or call 1300 135 736

For enquiries in languages other than English, call our interpreting service 13 14 50
For hearing and speech impaired enquiries, call us via the National Relay Service on 13 36 77

Patricia Lorenz
Returning Officer

RM2858855

Notice of election

Macarthur Chronicle	Tuesday, 3 October 2017
Wollondilly Advertiser	Wednesday, 11 October 2017
Camden-Narellan Advertiser	Wednesday, 11 October 2017
Campbelltown-Macarthur Advertiser	Wednesday, 11 October 2017
Macarthur Chronicle	Tuesday, 17 October 2017
Wollondilly Advertiser	Wednesday, 25 October 2017
Camden-Narellan Advertiser	Wednesday, 25 October 2017
Campbelltown-Macarthur Advertiser	Wednesday, 25 October 2017

Appendix D: Wollondilly Council - East Ward by-election – declaration of poll advertisement



“WOLLONDILLY SHIRE COUNCIL – EAST WARD BY-ELECTION”
“SATURDAY, 28 OCTOBER 2017”

Result of Election

An election was held to elect one councillor. I declare

“MATT SMITH”

elected as councillor until the next ordinary election of the Council.

Detailed results are available from the NSW Electoral Commission website.

Patricia Lorenz
 Returning Officer
 1 November 2017

Information: www.elections.nsw.gov.au or 1300 135 736

For enquiries in languages other than English call our interpreting service 13 14 50.

For hearing and speech impaired enquiries, call us via the National Relay Service on 13 36 77.

RM2880707

Results

Wollondilly Advertiser	Wednesday, 8 November 2017
Camden-Narellan Advertiser	Wednesday, 8 November 2017
Campbelltown-Macarthur Advertiser	Wednesday, 8 November 2017

Appendix E: Wollondilly Council - East Ward by-election – ballot paper

Local Government Election
East Ward

Wollondilly Shire Council

BALLOT PAPER FOR
ELECTION OF 1 COUNCILLOR
Held on 28 October 2017

DIRECTIONS FOR VOTING
PLEASE READ CAREFULLY

Place the number **1** in the square next to the candidate of your choice. If you wish to vote for any more candidates, place consecutive numbers starting with **2** in the squares next to those candidates in order of your preferences for them.

MEANI Wayne
Independent

ZAMMIT Mick
Independent

SMITH Matt
Independent

EGAN-BURT Laura
Independent

You must not take a ballot paper out of the polling place

Appendix F: Wollondilly Council - East Ward by-election - polling places and accessibility

Pre-poll voting venues

Venue	Address	Suburb	Accessibility
Appin Pre-Poll	40 Sportsground Parade	Appin NSW 2560	Assisted access
Wollondilly RO Office	60 Rainside Avenue	Bargo NSW 2574	Assisted access

Voting venues

Venue	Address	Suburb	Accessibility
Appin Hall	Sportsground Parade	Appin NSW 2560	Assisted access
Bargo Hall	Radnor Road	Bargo NSW 2574	Assisted access
Camden Sth Public	Old Hume Highway	Camden NSW 2570	Assisted access
Cawdor Public	685 Cawdor Road	Cawdor NSW 2570	Assisted access
Douglas Park Public	111 Camden Road	Douglas Park NSW 2569	Assisted access
Durham Green	153 Menangle Road	Menangle NSW 2568	Fully accessible
Tahmoor Public	Bronzewing Street East	Tahmoor NSW 2573	Assisted access
Wilton Public	11 Greenbridge Drive	Wilton NSW 2571	Fully accessible
Wollondilly Hall	48-60 Menangle Street	Picton NSW 2571	Assisted access
Yanderra Public	Harley Street	Yanderra NSW 2574	Assisted access