

SUBMISSION ON THE DRAFT DETERMINATION



A Submission to the Electoral Districts Redistribution Panel

On behalf of The Liberal Party of Australia, NSW Division



LIBERAL PARTY OF AUSTRALIA

NEW SOUTH WALES DIVISION

State Director

Electoral Districts Redistribution Panel
c/o New South Wales Electoral Commission
GPO Box 832
SYDNEY NSW 2001

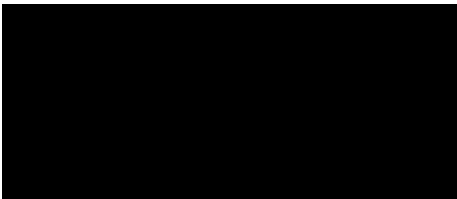
Dear Commissioners,

On behalf of The Liberal Party of Australia, New South Wales Division, I am pleased to make a Submission on the Electoral Districts Redistribution Panel's Draft Determination of the Names and Boundaries of Electoral Districts of New South Wales.

Rather than make detailed observations regarding every proposed district and name, the Liberal Party has limited its suggestions to those parts of the Draft Determination that we believe need correction.

We thank the NSW Electoral Commission, particularly the staff of the Redistribution Secretariat for their assistance to date.

Yours sincerely,



State Director



Submission on the Draft

Determination of the

Electoral Districts

Redistribution Panel

On behalf of The Liberal Party of Australia, NSW Division

CONTENTS:

EXECUTIVE SUMMARY	7
METHODOLOGY	11
COMMENTS ON REGIONS IN DETAIL	15
SUTHERLAND SHIRE & SOUTH WEST SYDNEY	16
NORTH AND WESTERN SYDNEY	23
SUMMARY OF SUGGESTED CHANGES	28
MAPS OF SUGGESTED CHANGES	31



EXECUTIVE SUMMARY



EXECUTIVE SUMMARY

The Liberal Party has reviewed the Electoral Districts Redistribution Panel's Draft Determination of the Names and Boundaries of Electoral Districts of New South Wales. The most important features of our Submission are as follows:

1. The Liberal Party acknowledges the Commissioners' adopted position **that the full margin of variance from the quota at both the current and relevant future time can be utilised where doing so would allow simpler boundaries and greater community of interest.**
2. The Liberal Party broadly accepts the draft boundaries proposed by the Commission in light of the decision to utilise the full permitted variance.
3. However, **we believe there are shortcomings in the draft boundaries which needlessly divide communities of interest and should be corrected.**
4. Nevertheless, the Liberal Party acknowledges that large scale re-drawing of boundaries is unlikely at this stage of the redistribution process, and therefore our suggested changes to the draft boundaries are modest amendments aimed at strengthening communities of interest, adopting clear boundaries, reducing elector confusion and relying on historical precedent, utilising the margin of variance where necessary to achieve these aims.
4. We particularly highlight the need for changes to the Shire districts and those in south-west Sydney, acknowledging the symbiotic relationship of these two areas.
5. The Liberal Party notes the continued importance of maintaining Heathcote as a Sutherland Shire based district.
6. The Liberal Party also strongly argues the district of Londonderry be renamed St Marys and the boundaries between Penrith and St Marys be realigned to reflect communities of interest in the Penrith LGA.
7. **The Liberal Party strongly advocates including whole suburbs within a single district where possible,** especially in relation to significant localities, such as Liverpool, Bankstown and Granville, which should be entirely within the districts of the same name.
8. In relation to four districts, the Liberal Party recommends changes to the proposed district names to better reflect local history and communities, as well as significant localities.



METHODOLOGY



METHODOLOGY

The Liberal Party acknowledges the Commissioners' adopted position that the full margin of variance from the quota at both the current and relevant future time can be utilised where doing so would allow simpler boundaries and greater community of interest.

While in our previous submissions the Liberal Party has advocated minimising variance from quota as much as possible, the Party accepts the view taken by the Commissioners that the variation from the quota is favourable where doing so strengthens community of interest and allows clearer electoral boundaries.

However, if variance from quota is a lower tier concern, the Liberal Party believes there are shortcomings in the draft boundaries which needlessly divide communities of interest and must be corrected.

Nevertheless, the Liberal Party acknowledges that large scale re-drawing of boundaries is unlikely at this stage of the redistribution process, and therefore our suggested changes to the draft boundaries are modest and practical amendments, based on the following principles

- strengthening communities of interest;
- adopting clear boundaries;
- reducing elector confusion; and
- historical precedent.

As stated above, the Liberal Party broadly accepts the draft boundaries as proposed by the Commission and our suggested amendments are made with a view to strengthening the draft boundaries.

As such, our comments relate to a limited number of proposed districts, rather than all districts across New South Wales.

The most significant changes relate to the interplay between the Shire districts and those in south-west Sydney, acknowledging the symbiotic relationship of these two areas – what happens in one naturally impacts the other, and also to the Penrith LGA based districts of Penrith and Londonderry.

In so far as our submission does not comment on other districts, in relation to those districts the Liberal Party accepts the draft boundaries and advocates no change to the draft boundaries.

The Liberal Party also notes that the flight and other transport links between Lord Howe Island and the NSW Mid-North Coast have evolved significantly since last year, creating stronger links between these communities.



COMMENTS

IN DETAIL

COMMENTS IN DETAIL

SUTHERLAND SHIRE & SOUTH WEST SYDNEY

The geographic and demographic aspects of the Sutherland Shire create significant challenges in creating electoral districts that reflect communities of interest while adopting clear boundaries and maintaining sensible connections within electoral districts.

In particular, the Sutherland Shire, while bordering on the South Coast / Wollongong region, **is unarguably part of Greater Sydney, creating a clear priority of linking the districts of Cronulla, Miranda, Heathcote and Holsworthy with Sydney**, rather than with the South Coast.

Heathcote, Holsworthy, Miranda and Cronulla:

The most notable impact of maintaining Sutherland Shire seats oriented toward Sydney is the importance of **ensuring the district of Heathcote, which is centred on the Shire (and thus Greater Sydney) does not become a district of two distinct and separate communities by moving it further south.**

Over two-thirds of Heathcote electors reside within the Sutherland Shire LGA, highlighting Heathcote's status as a Shire centred district and part of Greater Sydney.

As such **the Liberal Party continues to advocate that Heathcote's current deficit in electors should primarily be addressed by adding additional electors from the Shire**, rather than from the Wollongong region. This retains Heathcote as a Sutherland Shire district, with its strong community of interest, rather than artificially merging two distinct regions into one district.

The Liberal Party therefore suggests that the southern boundary of Heathcote should only be extended as far south as Thirroul, taking in Thirroul, Austinmere and Coledale. The suburb of Bulli can then remain in Keira, reducing the number of electors changing districts and maintaining Bulli's longstanding link with Wollongong based districts.

While it would be preferable from a community of interest perspective to also keep Thirroul, Austinmere and Coledale in Keira, the Liberal Party accepts that there may be some need to add some electors to the southern end of Heathcote – however, **we argue strongly against the proportion proposed in the draft boundaries through the addition of Bulli.**



Fig 1. Proposed change to southern boundary of Heathcote.

Still focusing on the district of Heathcote, the Liberal Party also continues to advocate

the suburbs of Bundeena and Maianbar be transferred to the district of Cronulla as their community of interest clearly lies with Cronulla.

While at first glance the Hacking River may seem an obvious division between Cronulla and the south shore, the Liberal Party would draw the Commissioners' attention to the facts that Bundeena and Maianbar:

- have been in the Cronulla electorate (and the Cook electorate) in the past;
- share the postcode 2230 with Cronulla;
- are in A ward of Sutherland Shire, the rest of which is in the Cronulla electorate;
- are serviced by Cronulla High School;
- their main public transport is the Cronulla-Bundeena ferry. This connects at Cronulla to the Cronulla branch of the T4 train line, so Bundeena / Maianbar residents share with the rest of the Cronulla electorate a common interest in the Cronulla branch line;
- are part of the Catholic and Uniting Church parishes of Cronulla; and
- share interests in the Port Hacking / Hacking River waterway with the rest of the Cronulla electorate.

With the suggested transfer of Bulli to Keira and Bundeena and Maianbar to Cronulla, Heathcote requires additional electors to bring it within the allowable margin of variance from quota at both the current and relevant future time.

The Liberal Party suggests this can be best achieved by transferring the entire suburb of Bangor and the portion of Menai east of New Illawarra Road to Heathcote, noting both of these areas are in the existing district of Heathcote.

While the draft boundaries view the Woronora River as a natural boundary, separating distinct communities, the Liberal Party disagrees, noting that:

- the western side of the Sutherland Shire has the Woronora River as a key physical feature. Rather than being a natural boundary, the Woronora River is a focal point for the residents of the eastern side of New Illawarra Road, Sutherland and Engadine. The river and the picnic areas along its banks are a shared common area and the residents of these suburbs have a shared interest in the environment and infrastructure on both sides of the Woronora River;
- the residents of these suburbs share Menai Market Place, Sutherland shopping district and Engadine shopping district;
- Menai, Bangor and Barden Ridge are connected by the River Road, Bangor Bypass and Heathcote Road which allows effective communication and travel within the suburbs;
- these suburbs are connected by a number of interconnected bus routes which enable transportation between the suburbs. These routes include the 961, 962 and M92; and
- many of the residents of the eastern side of New Illawarra Road are already within the existing boundaries of Heathcote. Expanding Heathcote to the remaining areas would be a minimal change.

We suggest the suburb of Barden Ridge should remain in Holsworthy, noting that while on a map it appears linked with Bangor and Menai, it in fact has its own community of interest with strong links to the western side of Holsworthy, and indeed to Illawong.

In particular:

- There is a strong education connection between the Liverpool side of the Holsworthy electorate and Barden Ridge. At least 4 busloads of students travel on Heathcote Road each day from Sandy Point, Voyager Point, Pleasure Point, Holsworthy, Wattle Grove and Hammondville to attend Lucas Heights Community School in Barden Ridge – or their parents drive them as they don't have enough spaces on the buses.
- There is a population of military personnel that travel from Barden Ridge to the Holsworthy Barracks.
- There is a strong utilisation of Heathcote Road, by Barden Ridge residents, to travel west toward Liverpool.
- Plans are currently going through consultation for a Woolworths Metro to be built in Barden Ridge - providing a central location for Barden Ridge residents – reducing the need to go to other areas to shop
- Barden Ridge has been a part of the Holsworthy district (and its predecessor district) since the late 1990's.
- The topography of the Ridge means that it is not really connected to the rest of the Menai based area as it is located on the top of a ridge, and divided with the Bangor bypass. Even Carter Road at Menai is closed from connecting cars to Barden Ridge and only allows buses and emergency vehicles through the gate. It has its own identity and connects more with ANSTO to the south, and the Ridge Sporting Complex to the west.

The alternative of splitting Barden Ridge down New Illawarra Road would split off a large

number of community organisations from the residents that actually service them breaking their community of interest, particularly those that utilise the Ridge Recreation and Sporting Fields (which would be in Holsworthy), including the Jenko Pony Club, Barden Ridgebacks Netball Club and Barden Ridgebacks Football Club to name a few.

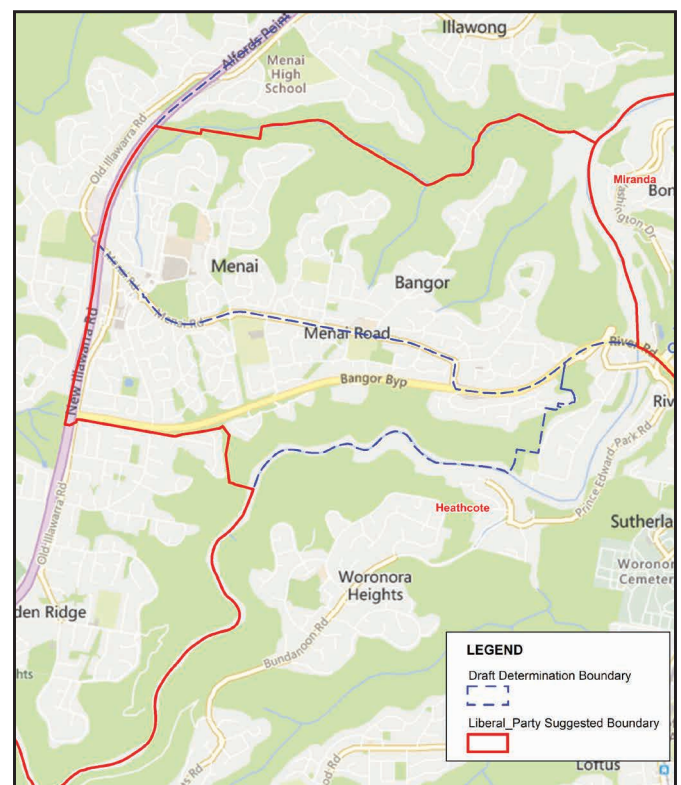


Fig 2. Proposed realignment of the Heathcote-Holsworthy boundaries.

To compensate for returning Menai and Bangor back into Heathcote, the Liberal Party advocates that the suburb of Illawong be transferred from Miranda to Holsworthy. **This removes the current anomaly whereby the suburb of Illawong is separated from the remainder of Miranda**, as currently there is no direct road link between Miranda and Illawong, without leaving the electorate.

Illawong shares a closer community of interest with Alford's Point (in the Holsworthy electorate under the draft boundaries) and the two have strong connections with the western side of Holsworthy:

- Both utilise Illawong Shopping Centre and share the same progress association.
- Both utilise Alfords Point Road, New Illawarra Road and Old Illawarra Road
- The local High School for both is in Illawong
- Both are serviced by Illawong Rural Fire Service Station

We also note that the baseball team at Barden Ridge is called the Illawong Marlins and the Illawong Little Athletics plays at The Ridge Sporting Complex, which further supports our proposal that Barden Ridge, Illawong and Alfords Point be united in the district of Holsworthy.

With these changes to Holsworthy and Heathcote, this allows the remainder of the suburb of Kirawee to be transferred to Miranda, allowing the adoption of the Princes Highway and Grand Parade as the boundary between these districts, a stronger, clearer boundary between the districts of Heathcote and Miranda.

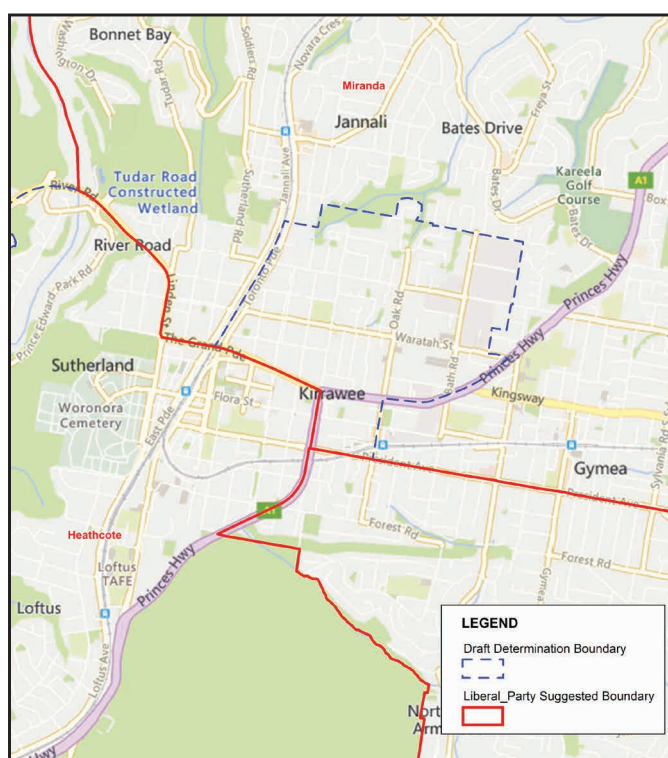


Fig 3. Proposed realignment of the Heathcote-Miranda boundary at Kirawee.

To balance the transfer of Bundeena and Maianbar to Cronulla, and the transfer of electors from Miranda to Heathcote and Holsworthy, the Liberal Party proposes the suburb of Caringbah be transferred from Cronulla to Miranda. We suggest Caringbah is better suited to Miranda, noting that:

- Caringbah is part of C Ward of the Sutherland Shire LGA, the remainder of which is in Miranda – thus this transfer would better reflect the LGA Wards;
- transferring Caringbah to Miranda unites the Caringbah CBD in the one electorate, rather than the current split between Miranda and Cronulla.

With these changes, the Shire seats of Cronulla, Miranda, Heathcote and Holsworthy are well balanced and have stronger community of interest links with clear and understandable boundaries.

While these changes result in some variance from quota at the relevant future time, reflecting the Commissioners' acceptance of variance from quota in other areas where **it allows stronger community of interest, and acknowledging pending and proposed applications for additional housing development in the Sutherland Shire**, the Liberal Party believes our proposal better reflects the local communities in the Sutherland Shire while meeting the statutory requirements,

Liverpool, Macquarie Fields and Leppington:

This brings us to south-west Sydney.

The current draft boundaries for Liverpool continue to split the suburb of Liverpool. The Liverpool CBD is one of the largest in NSW and an anchor for the south-west region, with both a state district and local government area named after the suburb and CBD.

The Liberal Party also notes the precedent in relation to other major cities, such as Penrith, Campbelltown and Parramatta, where the entirety of the suburb is included within the electoral district of the same name, and suggest this would be more appropriate for Liverpool.

There is also currently significant confusion among residents of Liverpool as to their electoral district, and ensuring the entire suburb is within the electoral district of the same name would reduce this confusion. We also note that the entire suburb of Liverpool is currently contained in the federal electorate of Fowler.

In transferring the remainder of the suburb of Liverpool to the district of Liverpool, the suburb of Lurnea and Prestons west of the M7 can also be transferred to Liverpool. This allows the south boundary of Liverpool to then be the M5, with the M7 as the western boundary, creating clearer boundaries for Liverpool, Holsworthy and Leppington.

In transferring the remainder of the suburb of Liverpool to the district of Liverpool, the suburb of Lurnea and Prestons west of the M7 can also be transferred to Liverpool. This allows the south boundary of Liverpool to then be the M5, with the M7 as the western boundary, creating clearer boundaries for Liverpool, Holsworthy and Leppington.

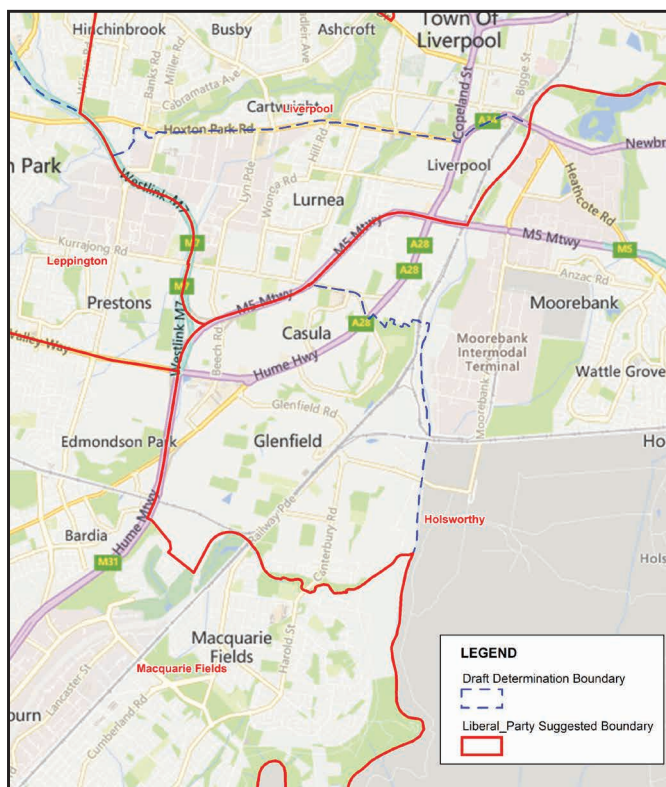


Fig 4. Proposed realignment of the Holsworthy-Liverpool-Macquarie Fields boundary

In order to offset the transfer of these areas into Liverpool, the Liberal Party proposes the suburbs of Cecil Hills and Elizabeth Hills, as well as Prestons and Green Valley west of Wilsons Road, be transferred to Leppington, adopting Wilsons Road as the boundary, and following the Liverpool LGA northern boundary along North Liverpool and Cowpasture Roads, and continuing to use Elizabeth Road as a boundary.

This in turn allows the Leppington suburbs of Eagle Vale, Raby and Kearns to be transferred to the district of Macquarie Fields and thus linked to St Andrews and Minto, with which they have existing community of interest links.

The Liberal Party notes that the proposed district of Macquarie Fields already crosses the Hume Highway at Bardia and Edmondson Park to connect established communities. To maintain community of interest, the Liberal Party also proposes the suburb of Claymore be transferred from Campbelltown to Macquarie Fields, allowing the adoption of Badgally Road-Gregory Hills Drive as the boundary.

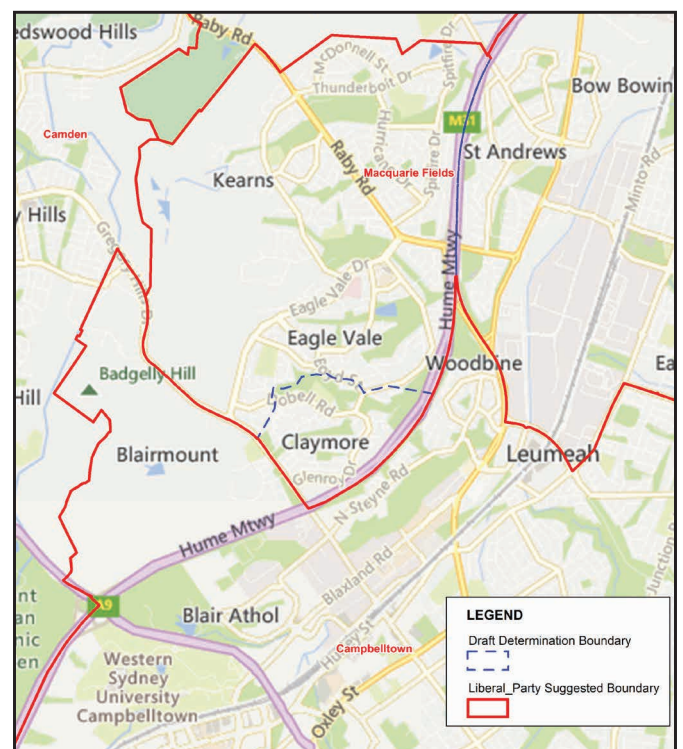


Fig 5. Proposed realignment of the Leppington-Macquarie Fields-Campbelltown boundary

This brings us full circle. The transfer of the suburb of Liverpool from the Holsworthy district to Liverpool leaves Holsworthy under quota, while the subsequent transfers outlined above leave Macquarie Fields over quota. **This can be balanced by transferring the entire suburbs of Casula and Glenfield into Holsworthy.**

This removes the current split of Casula between electorates, and allows the adoption of the Hume Highway and Bunburry Currans Creek as electoral district boundaries for Holsworthy.

These series of changes are minor in scale, but result in clear, strong boundaries across Liverpool, Holsworthy, Leppington and Macquarie Fields, while also bringing together communities of interest, particularly in relation to Liverpool.

Oatley, Kogarah and East Hills:

Finally, the Liberal Party also suggests a minor boundary adjustment between the districts of Kogarah and Oatley, and adjustments to the district of East Hills.

In relation to Kogarah and Oatley, given the Commissioners' acceptance of deviation from quota in order to maintain community of interest and create clear boundaries, the Liberal Party recommends the suburb of Blakehurst be retained in Oatley, rather than being transferred to Kogarah. **This allows King Georges Road to be adopted as the boundary for almost the entirety of the Kogarah/Oatley boundary** (albeit with a slight deviation around Tom Uglys Bridge to follow the suburb boundary and existing Oatley boundary), creating a simple and consistent boundary, rather deviating from King Georges Road to the arbitrary boundary along Merriman St.

In order to maintain such a clear and strong boundary, the Liberal Party believes there is no

need to compensate this transfer of electors from the proposed districts. This would also create a strong set of boundaries for the district of Oatley (Georges River, Salt Pan Creek, M5 Motorway and King Georges Road) which would be unlikely to require adjustment for some time at future redistributions, creating ongoing stability for electors in Oatley, noting that Blakehurst is in the existing district of Oatley.

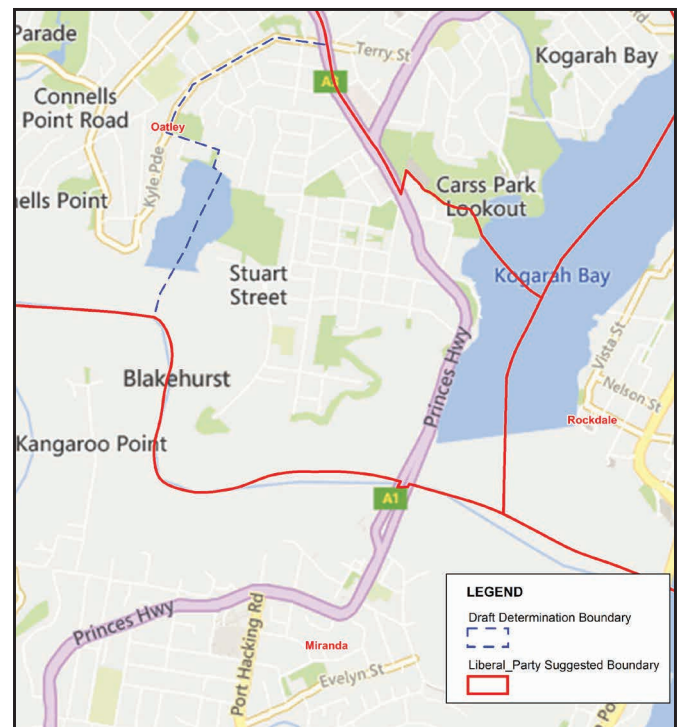


Fig 6. Proposed realignment of the Kogarah-Oatley boundary

With regard to the district of East Hills, the Liberal Party urges the Commissioners to reconsider our initial proposal, namely:

- transferring the remainder of the suburb of Bankstown into the district of Bankstown, adopting Gallipoli and Clarence Streets as the boundary between East Hills and Bankstown;
- Keeping the majority of the suburb of Yagoona united in one district (on the Commissioners' draft boundaries, this would be the district of Auburn); and
- Transferring the remainder of the suburb of Georges Hall into East Hills.

Supporting this proposal, the Liberal Party makes the following observations. Firstly, in relation to the suburb of Bankstown, similar to our arguments regarding the suburb of Liverpool, **we believe it is preferable the entirety of such a significant suburb and CBD be contained in the one district**, especially where that district bears the same name. We note that this requires only a minor adjustment to the boundary, and indeed the Gallipoli-Clarence Streets boundary is a much simpler boundary rather than the proposed dog-legs along multiple streets.

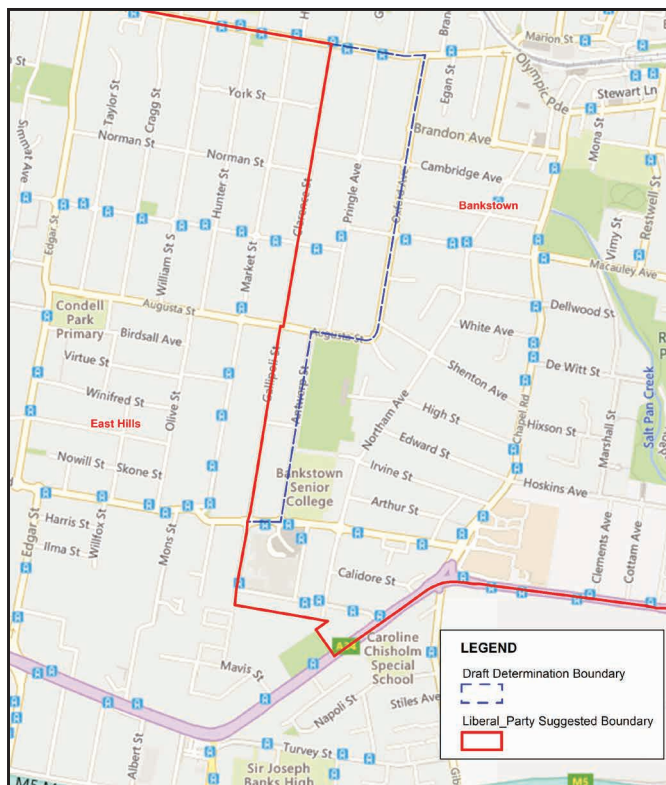


Fig 7. Proposed realignment of the East Hills-Bankstown boundary at Bankstown

In relation to the suburb of Yagoona, the Liberal Party suggests the existing district boundary for East Hills be maintained, keeping as much as possible of the suburb of Yagoona linked in the district of Auburn.

Finally, with the changes suggested above, East Hills would be under quota, albeit within the permitted margin of variance. Noting significant developments are forecast for East Hills,

including the Milperra University site and the Milperra Riverlands Mirvac site, which are the subject of development proposals, **the Liberal Party suggests that additions to East Hills are not required** and the East Hills boundaries could remain almost identical to the existing boundaries, except for the transfer of the Bankstown suburb to Bankstown.

However, should the Commissioners deem it necessary to compensate for the transfer of voters out of the proposed East Hills, the Liberal Party argues that uniting the suburb of Georges Hall into the one district, namely East Hills, would be far preferable to the proposed boundaries. Georges Hall is currently split into two districts, which we note both the ALP and Liberal Party submissions argued against. Demonstrating the Georges Hall community of interest, supporting our suggestion to incorporate the entire suburb in one district, the Liberal Party highlights that:

- the Department of Education drawing area for students to attend the Georges Hall Public School, already located in the district of East Hills, incorporates the entirety of the suburb of Georges Hall;
- The Catholic Parish of Georges Hall, on the current boundary between East Hills and Fairfield, covers the entire suburb of Georges Hall; and
- Georges Hall as a community focusses on Bankstown to the west, rather than Fairfield, with
 - o Bankstown (including the Bankstown-Lidcombe hospital and the Bankstown CBD) only a 12 minute bus ride, compared with over half an hour bus ride to Fairfield; and

- o Crest Park, technically located with the Georges Hall boundary, is home to many Bankstown sports clubs, including the Bankstown athletic, cycling, hockey and gymnastics clubs.

With these changes, we believe the electoral district boundaries on the north shore of the Georges River better reflect the communities of interest.

NORTH AND WESTERN SYDNEY

In relation to North and Western Sydney, the Liberal Party broadly endorses the proposed electoral boundaries, and suggests only minor amendments.

Badgerys Creek (Mulgoa):

Firstly, in relation to the proposed district of Badgerys Creek, the Liberal Party suggests that the district instead retain the indigenous name of Mulgoa, recognising the Mulgoa people, the history of the region and the significance of the name Mulgoa, noting the Mulgoa postal area has existed since 1863. In contrast, 'Badgerys Creek' was named after a British born farmer and miller, James Badgery. While he named his property Exeter Farm, the creek that ran through his property was named Badgerys Creek. While ultimately that name was eventually applied to the suburb, Mulgoa has a far stronger history and significance as a district name, most significantly through its indigenous heritage, but also its more recent heritage since the early 19th century.

Penrith and Londonderry:

Moving north to the districts of Penrith and Londonderry, **the Liberal Party urges the Commissioners to reconsider the draft boundaries between these two districts.**

The Penrith LGA north of the M4 is effectively made up of two major communities – one centred around Penrith and one centred around St Marys. The draft determination reflects this, to some extent, with these two communities forming the ballast of the two electoral districts, currently Penrith and Londonderry. However, **the draft boundaries as drawn still separate parts of these communities, as a result of efforts to maintain a seat named Londonderry**, linking the suburb of Londonderry with St Marys, despite their divergent community centres.

The Northern Road forms a significant boundary through the Penrith LGA with distinct communities on either side, and is an ideal electoral district boundary. Londonderry, Castlereagh and Agnes Banks, on the western side of The Northern Road, are Penrith focused communities, particularly through their main road connections along Londonderry Road and Castlereagh Road. In contrast, Berkshire Park, Llandilo, Jordan Springs, Cambridge Park and Cambridge Gardens, to the east of The Northern Road, are St Marys centred communities.

The draft boundaries effectively mix and match suburbs rather than maintaining community of interest, resulting in split suburbs, minor roads as boundaries and divergent communities of interest.

A key starting point to enable corrections to this situation is to recognise that Londonderry as a suburb is a relatively minor community centre, accounting for only 5% of the total electoral population of the district, in contrast to the St Marys communities, which are the anchor point of the district.

The Liberal Party strongly urges the Commissioners to recognise this by renaming the district of Londonderry to St Marys.

The Liberal Party notes that not only is St Marys the major community centre of the district, but also notes the historical significance of St Marys as one of the oldest settlements in Western Sydney, named after the historic St Marys parish church, with the St Marys post office first opening in 1840 and the municipality of St Marys being established in 1890. In contrast, the locality of Londonderry is relatively new, and indeed did not become a postal district until 1935, almost a century after St Marys. The Liberal Party also notes that St Marys previously existed as an electoral district in NSW from 1981 to 1988 and again from 1991 to 1999.

Additionally, **St Marys will only continue to grow as a community focal point with the planned Badgerys Creek Airport rail line linking with the existing T1 line at St Marys.**

With Londonderry renamed as St Marys, the suburbs of Londonderry, Castlereagh and Agnes Banks, as well as the remainder of Cranebrook (which is needlessly split between districts) can be transferred to the district of Penrith, adopting The Northern Road as the boundary. Maintaining this strong boundary, and compensating for the transfer of electors into Penrith, the Liberal Party recommends the suburbs of Cambridge Park (already in the existing seat of Londonderry) and Cambridge Gardens be transferred to St Marys, as well as Kingswood north of the M4.

This creates an electoral boundary between Penrith and St Marys of The Northern Road all the way down to the M4, then adopting the M4 – very clear, strong boundaries, and roads that significantly split communities of interest. This is a significant improvement to the electoral boundaries between these two districts, without impacting other districts, and better reflects the communities of interest in the Penrith LGA.

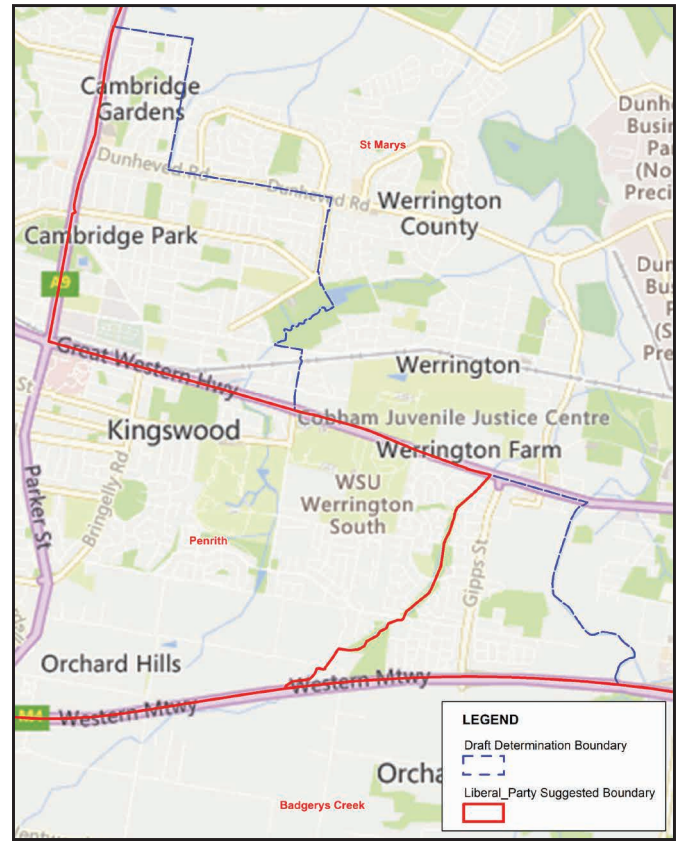


Fig 8. Proposed realignment of the Penrith-St Marys boundaries to the south

Additionally, to balance the number of electors between St Marys and Penrith, the Liberal Party suggests that the southern point of Londonderry be expanded, moving the western boundary further west, from South Creek to Clearmont Creek, or alternatively to the Claremont Meadows suburb boundary.

Granville and Parramatta:

With regard to the district of Parramatta, the Liberal Party believes **the proposed boundaries drastically alter the focus and community of this district from its existing communities of interest.** Unfortunately, correcting the draft boundaries in this respect would require a large scale re-draw of multiple surrounding districts, which at this late stage of the process the Liberal Party accepts is difficult.

We therefore suggest only minor adjustments to improve community of interest and strengthen the boundaries.

Firstly, **the Liberal Party believes the Parramatta-Granville boundary should be realigned, adopting the M4-Western Motorway as the boundary.** The draft boundaries already utilise the M4 as an electoral boundary for much of its length. Continuing to use the M4 as a boundary between Granville and Parramatta avoids Parramatta crossing both the M4 and Parramatta Road and allows the suburb of Granville to be united in the electoral district of the same name, rather than the draft boundaries which split Granville unnecessarily.

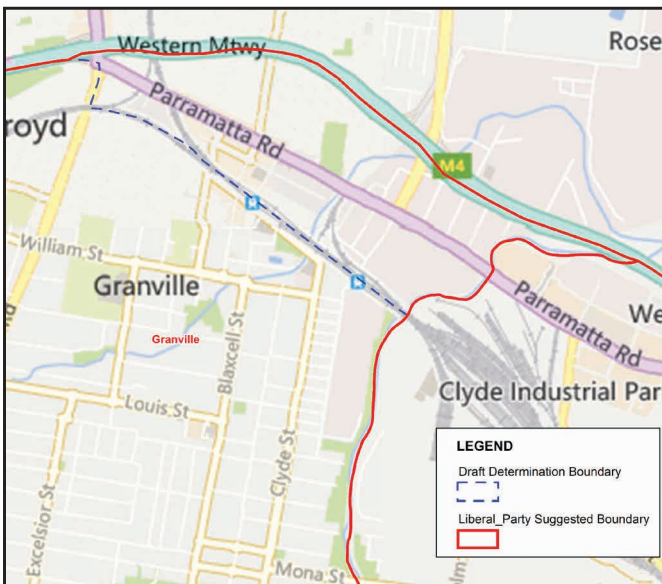


Fig 9. Proposed realignment of the Granville-Parramatta boundary along the M4

This is consistent with our arguments regarding Liverpool and Bankstown, uniting significant suburbs within the electoral districts of the same name.

The Liberal Party also strongly argues that the suburb of Oatlands be transferred from Epping into Parramatta to retain more of the Parramatta focused communities within the district of Parramatta. It would be preferable to also include the remainder of the suburb of North Parramatta (encompassing the Kings School and Tara Girls School) in the district of Parramatta, however we recognise the challenge this creates in relation to North Rocks between Hunts Creek and Darling Mills Creek.

In relation to Oatlands, the community focus for residents in Oatlands is south, in the Parramatta CBD. In particular, the Liberal Party notes that

- The suburb of Oatlands is located in the Parramatta LGA and is currently within the Parramatta electoral district and the federal electorate of Parramatta;
- Oatlands residents overwhelmingly shop in Parramatta, not to the east toward Epping;
- residents often move into Oatlands due to its proximity to local schools in Parramatta, and similarly the Oatlands Public School catchment area extends across James Ruse Drive into North Parramatta.
- Public Transport links to Parramatta are strong, including
 - o the 552 bus service provides an hourly service from Oatlands to Parramatta, with additional services such as the 546 and 550 bus services, providing an 18 minute trip to Parramatta versus a 40 minute trip to Epping.
 - o Oatlands residents travelling to the Sydney CBD, Sydney airport etc travel via Parramatta, with more regular services and shorter travel times compared with travelling via Epping.

The Liberal Party believes **retaining Oatlands in Parramatta is far preferable to the draft boundaries and alleviates some of the community of interest split** that has occurred with the significant redraw of the Parramatta electoral district. It simultaneously offsets the transfer of electors south of the M4 into Granville, strengthening that community of interest as well and creating a clearer electoral boundary.

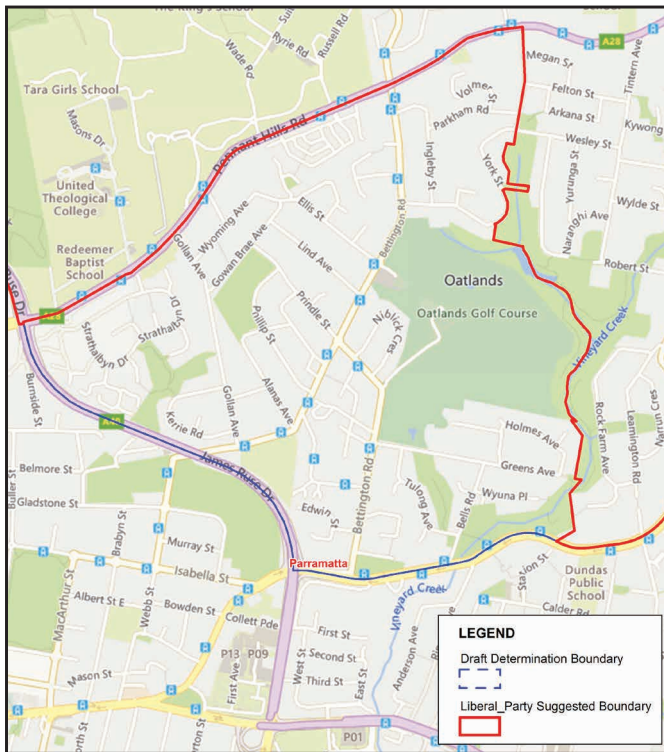


Fig 10. Proposed Parramatta-Epping boundary at Oatlands

Wahroonga (Ku-ring-gai):

In relation to the proposed districts of Wahroonga and St Ives, the Liberal Party advocates that the names Ku-ring-gai and Davidson be retained instead. The district of Ku-ring-gai has existed since 1973 and is one of only three electoral districts in NSW to have been held by two Premiers (Premiers Greiner and O’Farrell), and was first represented by the respected Attorney-General of NSW, John Maddison, a significant figure in NSW history. The Liberal Party also notes that over 55% of the electors in the proposed district would be residents of the Ku-ring-gai LGA.

St Ives (Davidson):

Similarly, the district of Davidson has existed as an electoral district since 1971 and the suburb after which the district is named is itself named after Sir Walter Davidson, a prominent figure in NSW history. With the suburb of Davidson remaining in the district, it seems completely unnecessary to rename the district, which would simply create voter confusion for no apparent reason.

OTHER REGIONS

As noted in the methodology section of this submission, the Liberal Party acknowledges that large scale re-drawing of boundaries is unlikely at this stage of the redistribution process, and therefore our suggested changes to the draft boundaries are modest and practical amendments, limited to only those regions and districts that we feel require correction.

As such, in so far as our submission does not comment on other districts, in relation to those districts the Liberal Party accepts the draft boundaries and advocates that the boundaries do not change from the draft determination.



SUMMARY OF SUGGESTED CHANGES

The table below provides a summary by district of the Liberal Party's suggested changes to the Draft Determination.

AUBURN

Transferred FROM

Proposed District	Suburb/Locality
East Hills	Yagoona, Bass Hill (east of Crest Park)

BANKSTOWN

Transferred FROM

Proposed District	Suburb/Locality
East Hills	Bankstown

CAMPBELLTOWN

Transferred TO

Proposed District	Suburb/Locality
Macquarie Fields	Claymore

CRONULLA

Transferred FROM

Proposed District	Suburb/Locality
Heathcote	Bundeena, Maianbar

Transferred TO

Proposed District	Suburb/Locality
Miranda	Caringbah

EAST HILLS

Transferred FROM

Proposed District	Suburb/Locality
Fairfield **Optional**	Georges Hall

Transferred TO

Proposed District	Suburb/Locality
Bankstown	Bankstown
Auburn	Yagoona, Bass Hill (east of Crest Park)

EPPING

Transferred TO

Proposed District	Suburb/Locality
Parramatta	Oatlands

FAIRFIELD

Transferred TO

Proposed District	Suburb/Locality
East Hills **Optional**	Georges Hall

HEATHCOTE

Transferred FROM

Proposed District	Suburb/Locality
Holsworthy	Bangor, Menai (west of New Illawarra Road)
Miranda	Bangor, Menai

Transferred TO

Proposed District	Suburb/Locality
Cronulla	Bundeena, Maianbar
Keira	Bulli
Miranda	Kirrawee, Sutherland (north of The Grand Parade)

HOLSWORTHY

Transferred FROM

Proposed District	Suburb/Locality
Macquarie Fields	Casula, Glenfield
Miranda	Illawong

Transferred TO

Proposed District	Suburb/Locality
Heathcote	Bangor, Menai (west of New Illawarra Road)
Liverpool	Liverpool, Lurnea, Cartwright

KEIRA

Transferred FROM

Proposed District	Suburb/Locality
Heathcote	Bulli

KOGARAH

Transferred TO

Proposed District	Suburb/Locality
Oatley	Blakehurst

LEPPINGTON*Transferred FROM*

Proposed District	Suburb/Locality
Liverpool	Cecil Hills, Elizabeth Hills, Hinchinbrook and Green Valley (west of Wilson Road)

Transferred TO

Proposed District	Suburb/Locality
Macquarie Fields	Kearns, Raby, Eagle Vale, Eschol Park

LIVERPOOL*Transferred FROM*

Proposed District	Suburb/Locality
Holsworthy	Liverpool, Lurnea, Cartwright

Transferred TO

Proposed District	Suburb/Locality
Leppington	Cecil Hills, Elizabeth Hills, Hinchinbrook and Green Valley (west of Wilson Road)

MACQUARIE FIELDS*Transferred FROM*

Proposed District	Suburb/Locality
Leppington	Kearns, Raby, Eagle Vale, Eschol Park
Campbelltown	Claymore

Transferred TO

Proposed District	Suburb/Locality
Holsworthy	Casula, Glenfield

MIRANDA*Transferred FROM*

Proposed District	Suburb/Locality
Cronulla	Caringbah
Heathcote	Kirrawee, Sutherland (north of The Grand Parade)

Transferred TO

Proposed District	Suburb/Locality
Heathcote	Bangor, Menai
Holsworthy	Illawong

OATLEY*Transferred FROM*

Proposed District	Suburb/Locality
Kogarah	Blakehurst

PARRAMATTA*Transferred FROM*

Proposed District	Suburb/Locality
Epping	Oatlands

PENRITH*Transferred FROM*

Proposed District	Suburb/Locality
Londonderry	Cranebrook, Castlereagh, Agnes Banks, Londonderry

Transferred TO

Proposed District	Suburb/Locality
Londonderry	Claremont Meadows (east of Clearmont Creek), Cambridge Gardens, Cambridge Park, Kingswood (north of M4)

ST MARYS (ex Londonderry)*Transferred FROM*

Proposed District	Suburb/Locality
Penrith	Claremont Meadows (east of Clearmont Creek), Cambridge Gardens, Cambridge Park, Kingswood (north of M4)

Transferred TO

Proposed District	Suburb/Locality
Penrith	Cranebrook, Castlereagh, Agnes Banks, Londonderry

NAME CHANGES

The Liberal Party also suggests the following changes to the names of proposed electoral districts:

- **Wahroonga** > Revert to **Ku-ring-gai**
- **St Ives** > Revert to **Davidson**
- **Badgerys Creek** > Revert to **Mulgoa**
- **Londonderry** > Re-name as **St Marys**



**MAPS OF PROPOSED
AMENDED DISTRICTS**



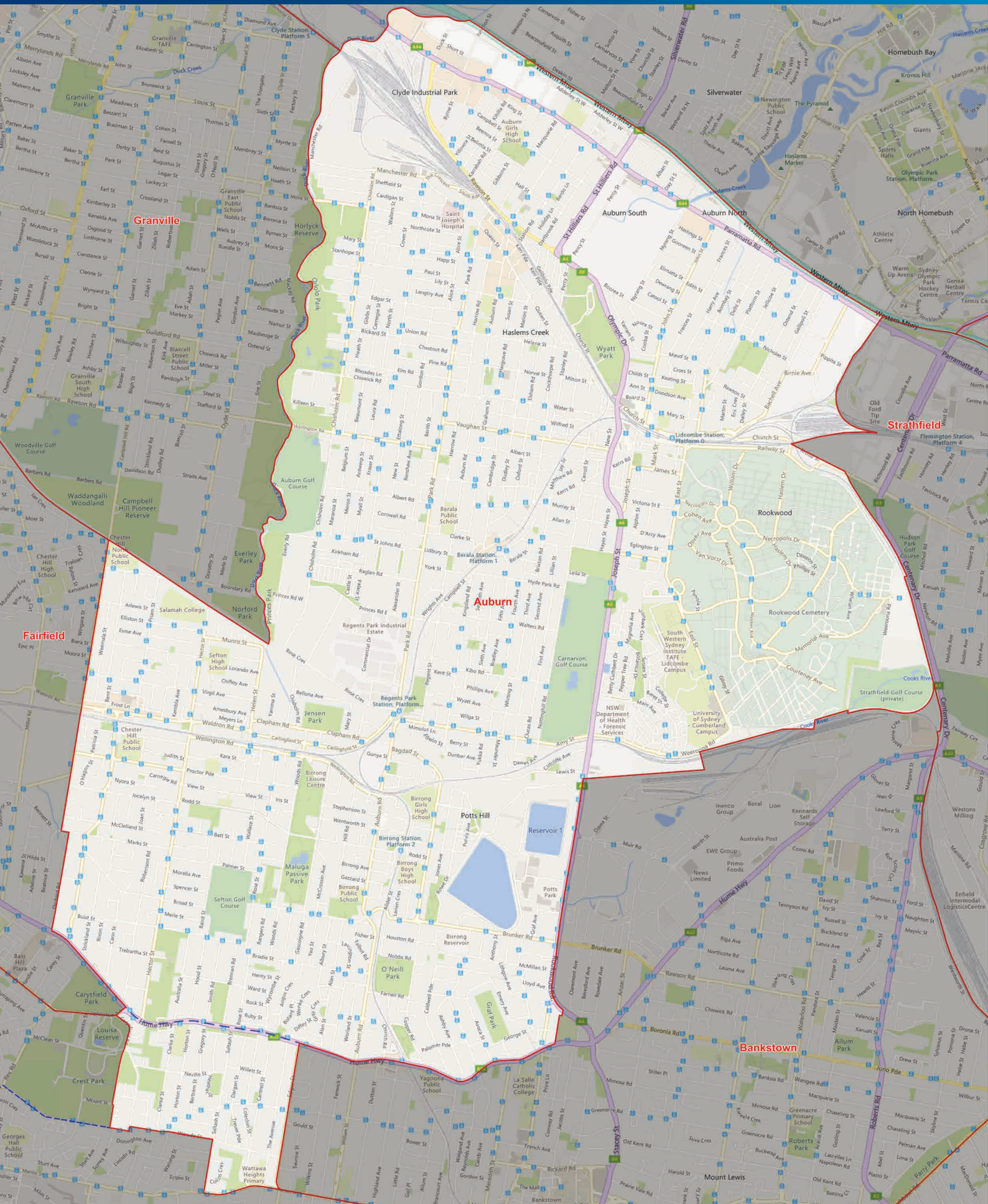
PROPOSED BOUNDARIES

ELECTORAL DISTRICT OF AUBURN

LEGEND:

Proposed Boundary as per the Draft Determination


Liberal Party's Suggested Amended Boundary



PROPOSED BOUNDARIES

ELECTORAL DISTRICT OF BANKSTOWN

LEGEND:

 Proposed Boundary as per the Draft Determination


 Liberal Party's Suggested Amended Boundary



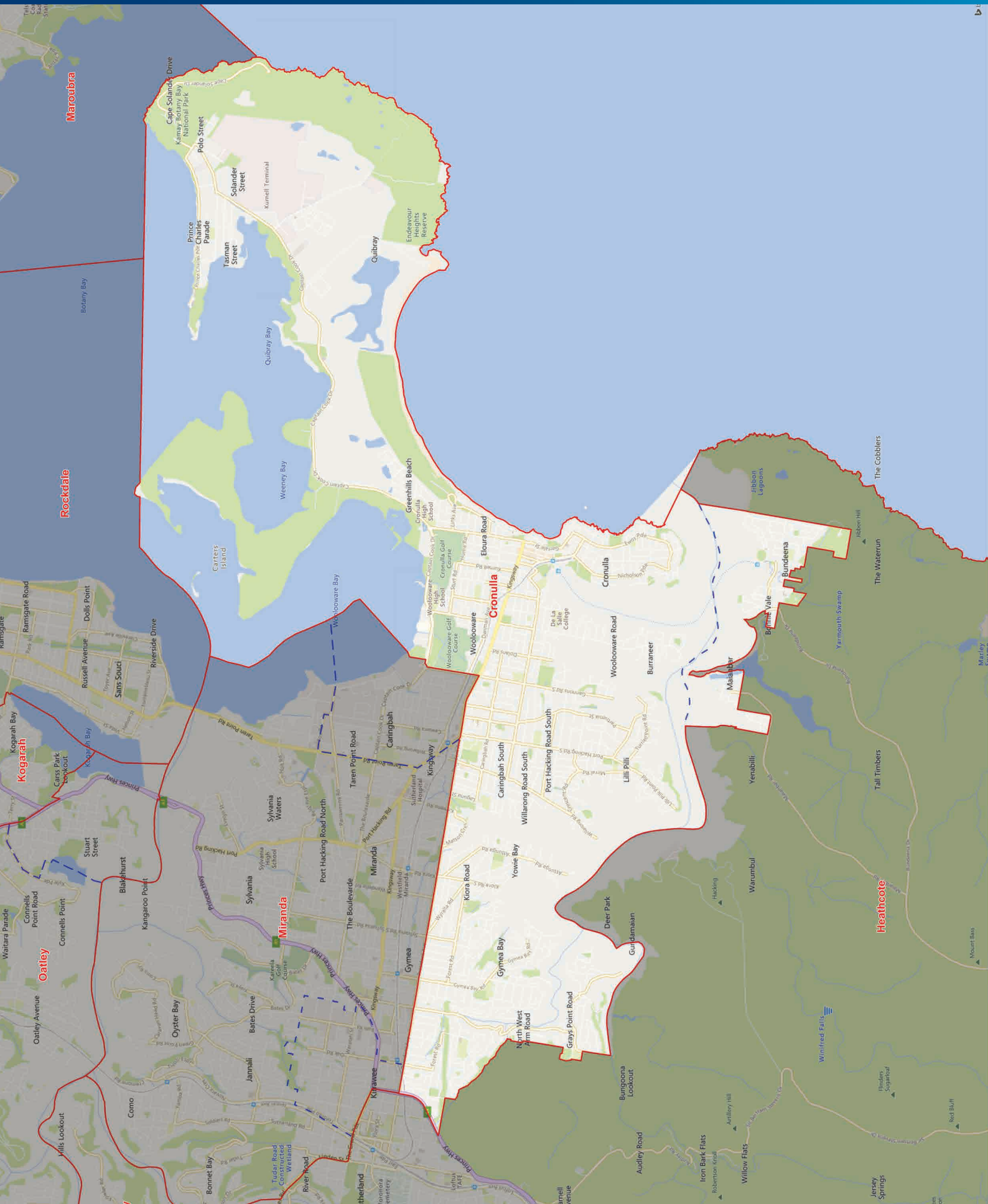
PROPOSED BOUNDARIES

ELECTORAL DISTRICT OF CRONULLA

LEGEND:

 Proposed Boundary as per the Draft Determination

 Liberal Party's Suggested Amended Boundary



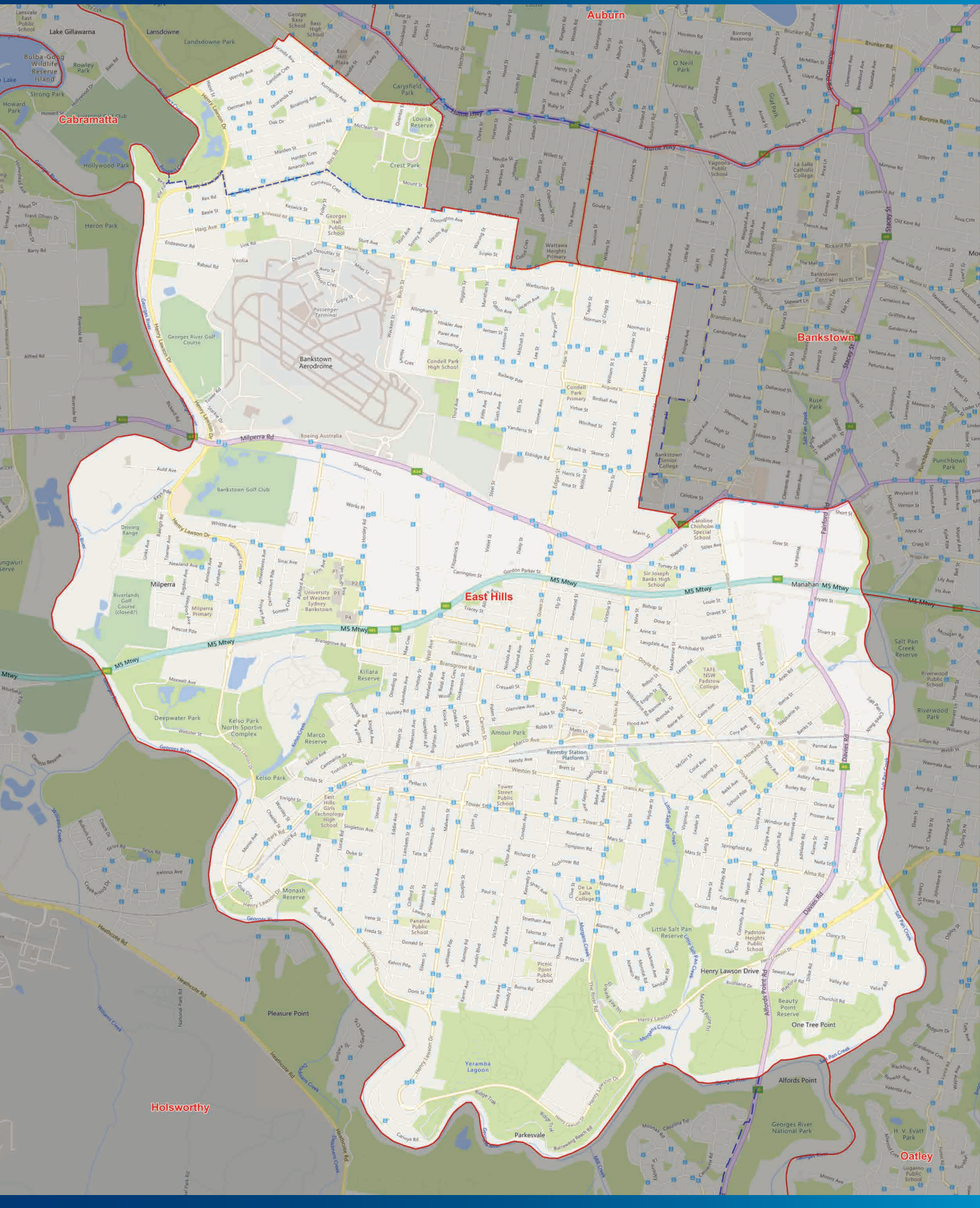
PROPOSED BOUNDARIES

ELECTORAL DISTRICT OF EAST HILLS

LEGEND:

Proposed Boundary as per the Draft Determination


Liberal Party's Suggested Amended Boundary



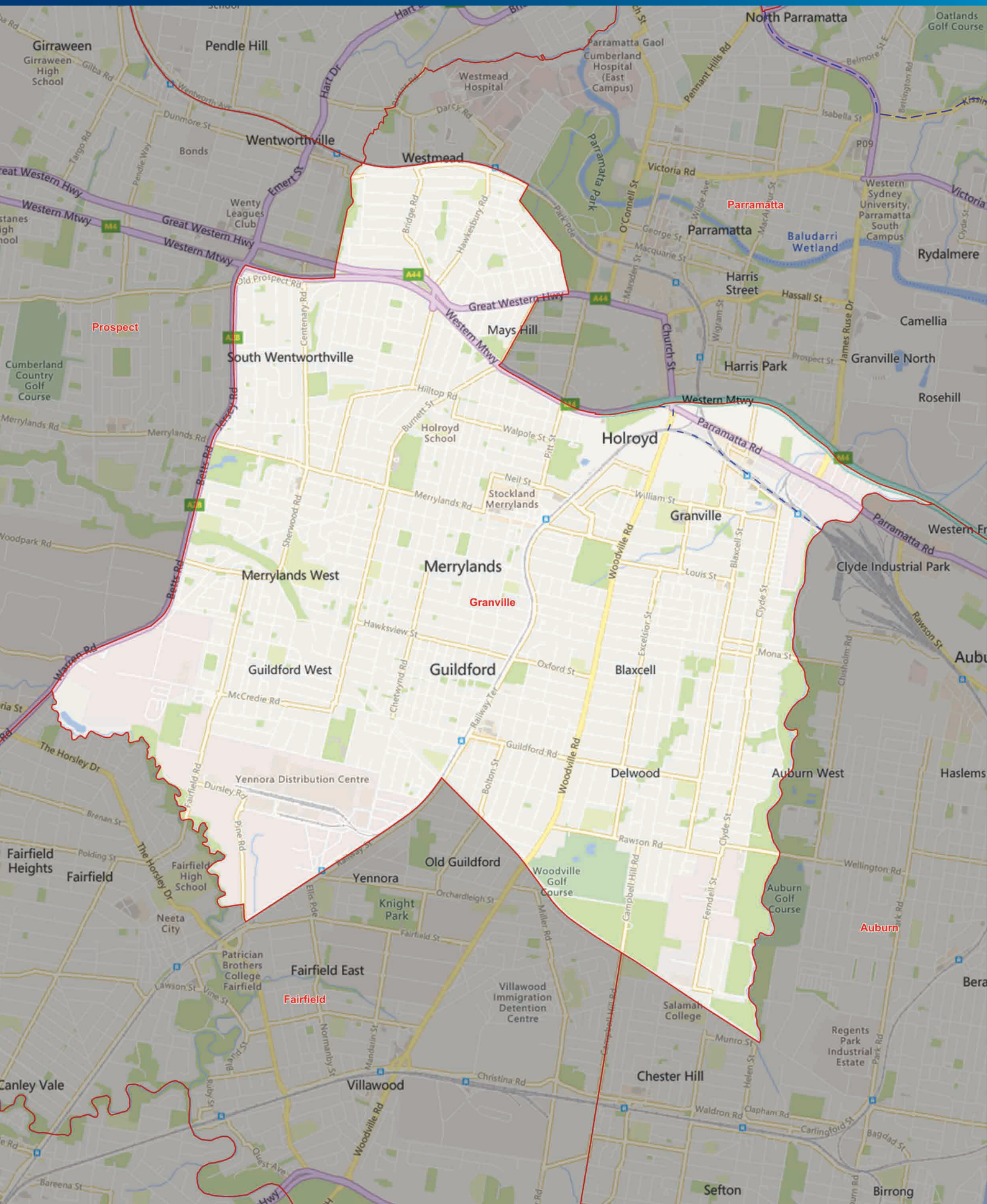
PROPOSED BOUNDARIES

ELECTORAL DISTRICT OF GRANVILLE

LEGEND:

 Proposed Boundary as per the Draft Determination


 Liberal Party's Suggested Amended Boundary



PROPOSED BOUNDARIES

ELECTORAL DISTRICT OF HEATHCOTE

LEGEND:

 Proposed Boundary as per the Draft Determination


 Liberal Party's Suggested Amended Boundary



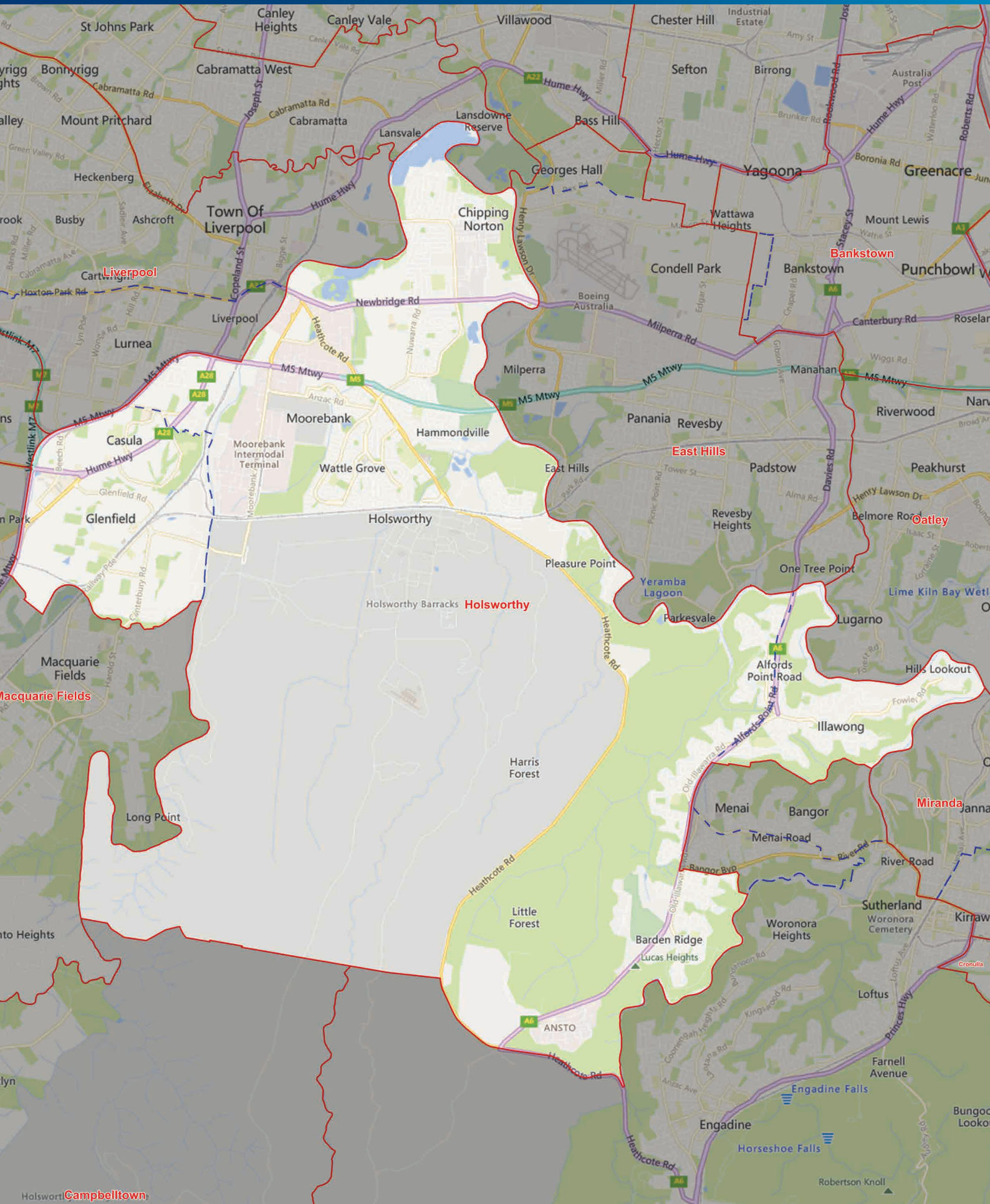
PROPOSED BOUNDARIES

ELECTORAL DISTRICT OF HOLSWORTHY

LEGEND:

 Proposed Boundary as per the Draft Determination

 Liberal Party's Suggested Amended Boundary



PROPOSED BOUNDARIES

ELECTORAL DISTRICT OF KEIRA

LEGEND:

Proposed Boundary as per the Draft Determination

Liberal Party's Suggested Amended Boundary



PROPOSED BOUNDARIES

ELECTORAL DISTRICT OF KOGARAH

LEGEND:

Proposed Boundary as per the Draft Determination


Liberal Party's Suggested Amended Boundary



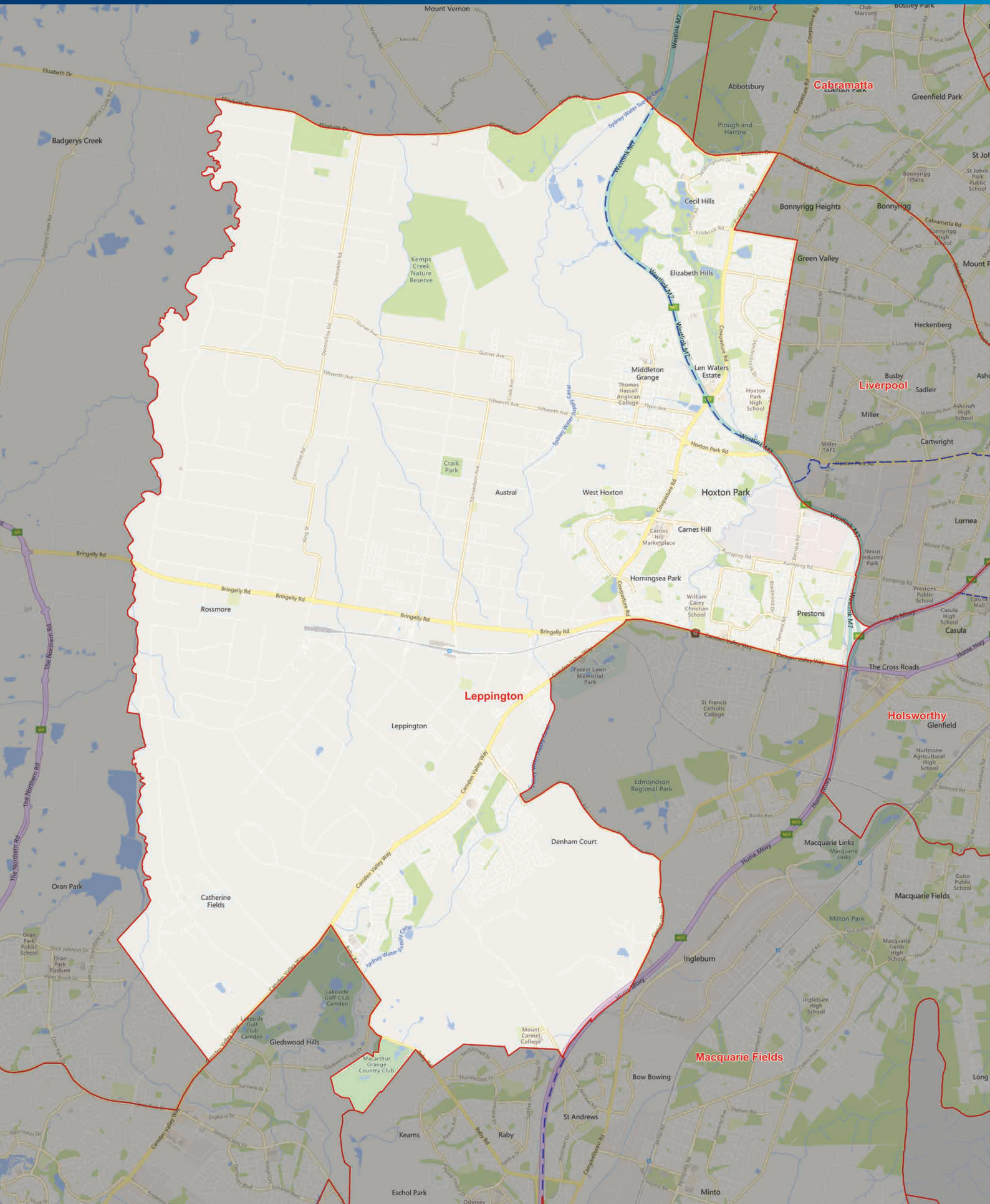
PROPOSED BOUNDARIES

ELECTORAL DISTRICT OF LEPPINGTON

LEGEND:

 Proposed Boundary as per the Draft Determination


 Liberal Party's Suggested Amended Boundary



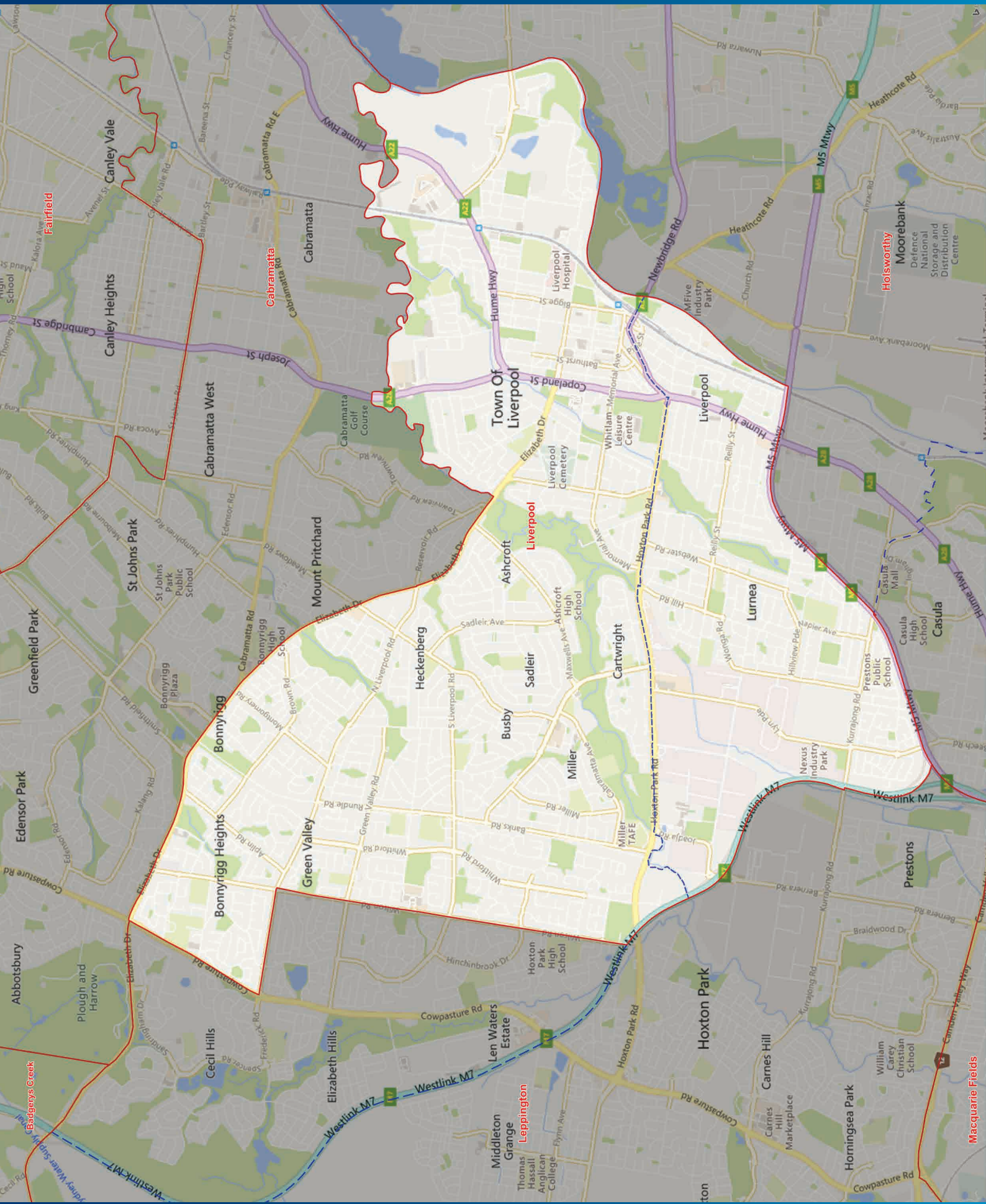
PROPOSED BOUNDARIES

ELECTORAL DISTRICT OF LIVERPOOL

LEGEND:

 Proposed Boundary as per the Draft Determination

 Liberal Party's Suggested Amended Boundary



PROPOSED BOUNDARIES

ELECTORAL DISTRICT OF MACQUARIE FIELDS

LEGEND:

 Proposed Boundary as per the Draft Determination


 Liberal Party's Suggested Amended Boundary



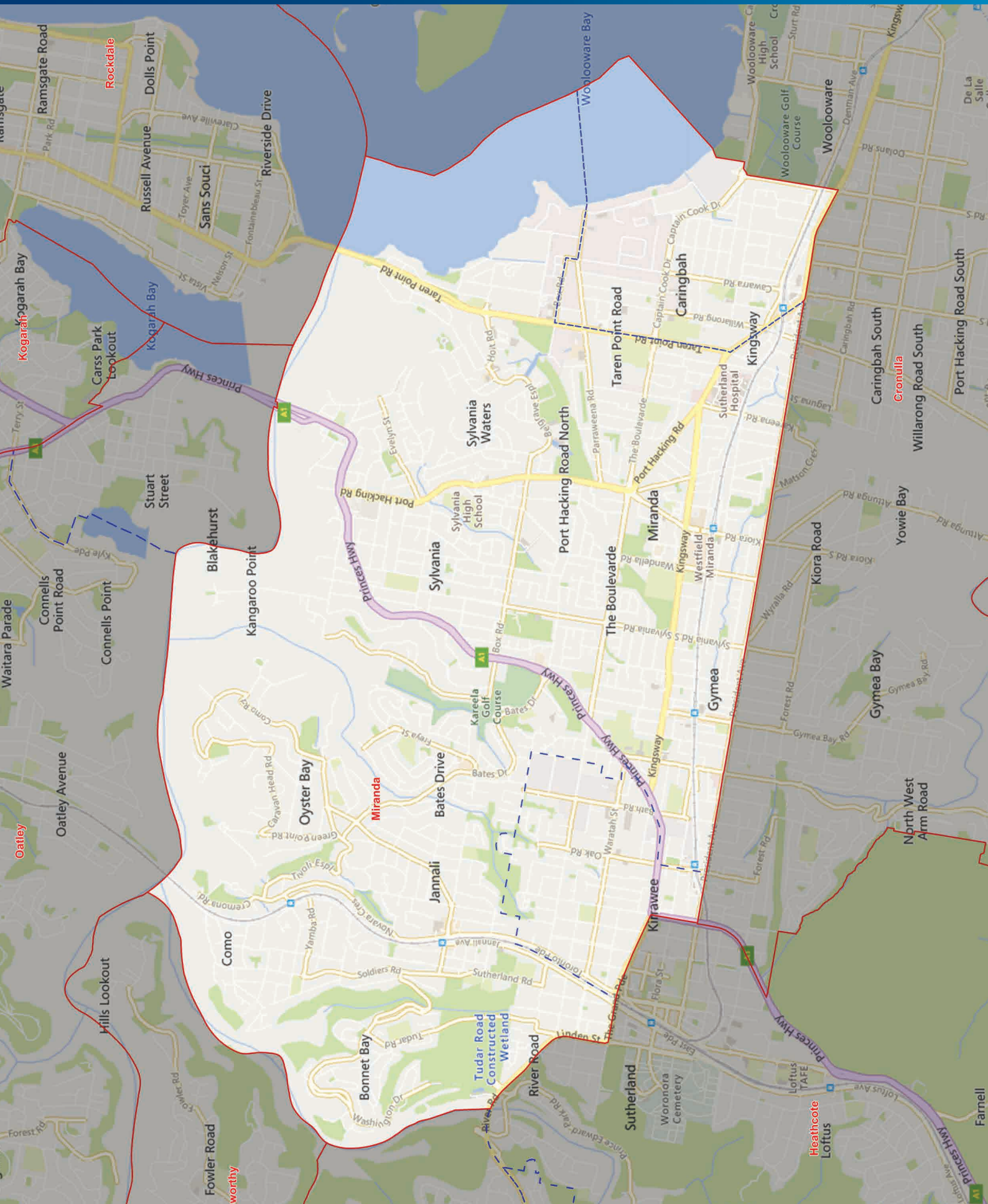
PROPOSED BOUNDARIES

ELECTORAL DISTRICT OF MIRANDA

LEGEND:

 Proposed Boundary as per the Draft Determination


 Liberal Party's Suggested Amended Boundary



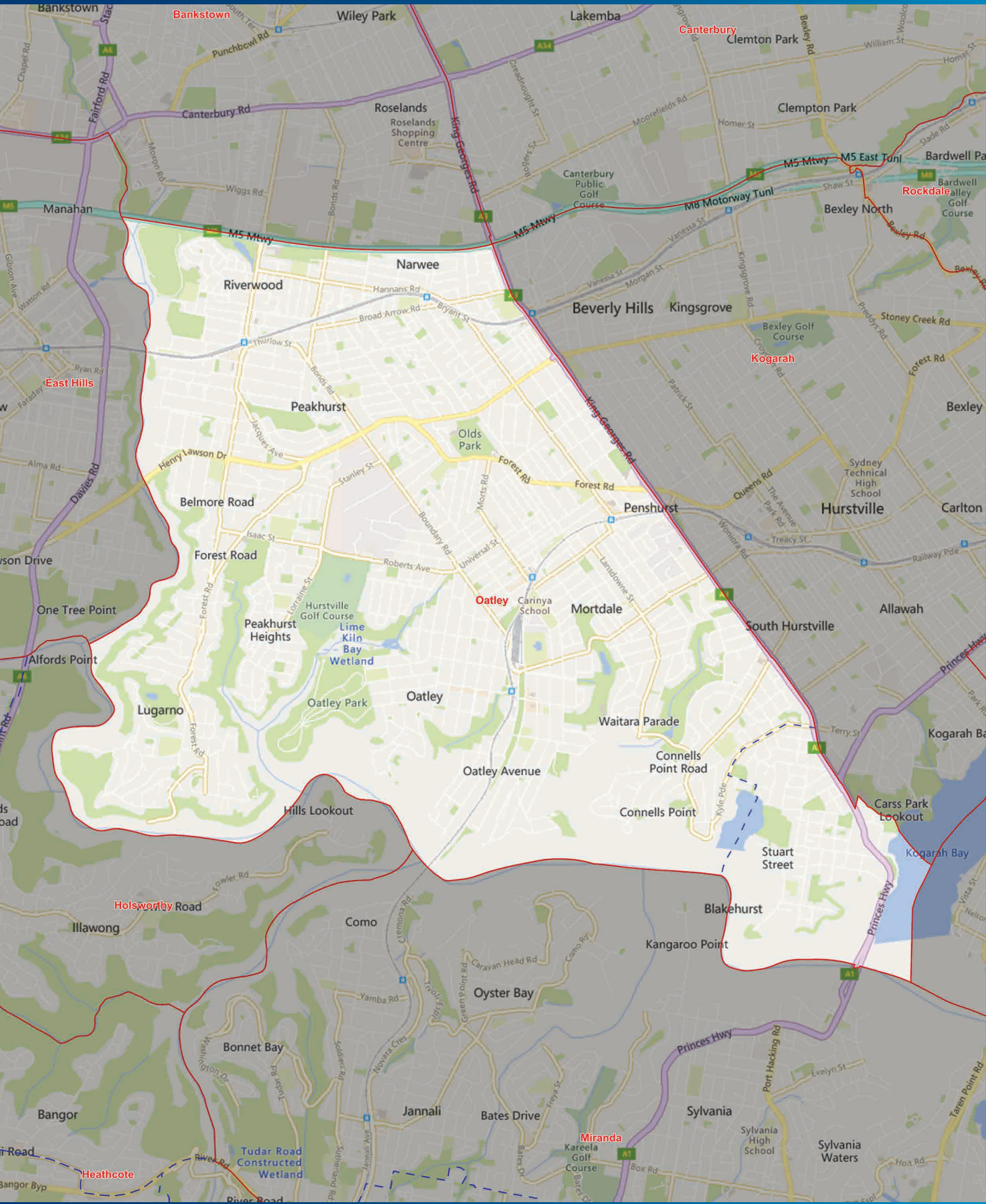
PROPOSED BOUNDARIES

ELECTORAL DISTRICT OF OATLEY

LEGEND:

 Proposed Boundary as per the Draft Determination


 Liberal Party's Suggested Amended Boundary



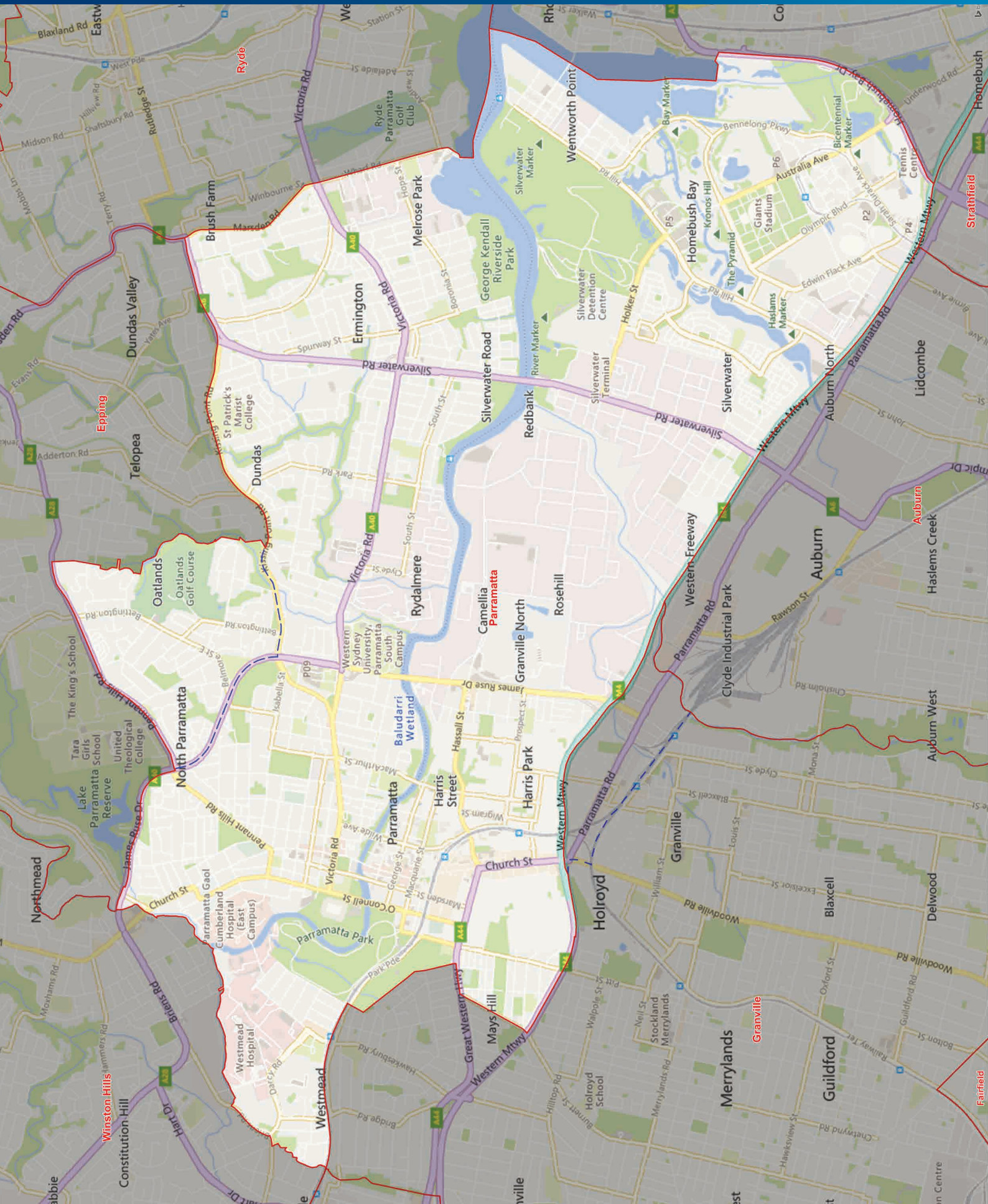
PROPOSED BOUNDARIES

ELECTORAL DISTRICT OF PARRAMATTA

LEGEND:

 Proposed Boundary as per the Draft Determination


 Liberal Party's Suggested Amended Boundary



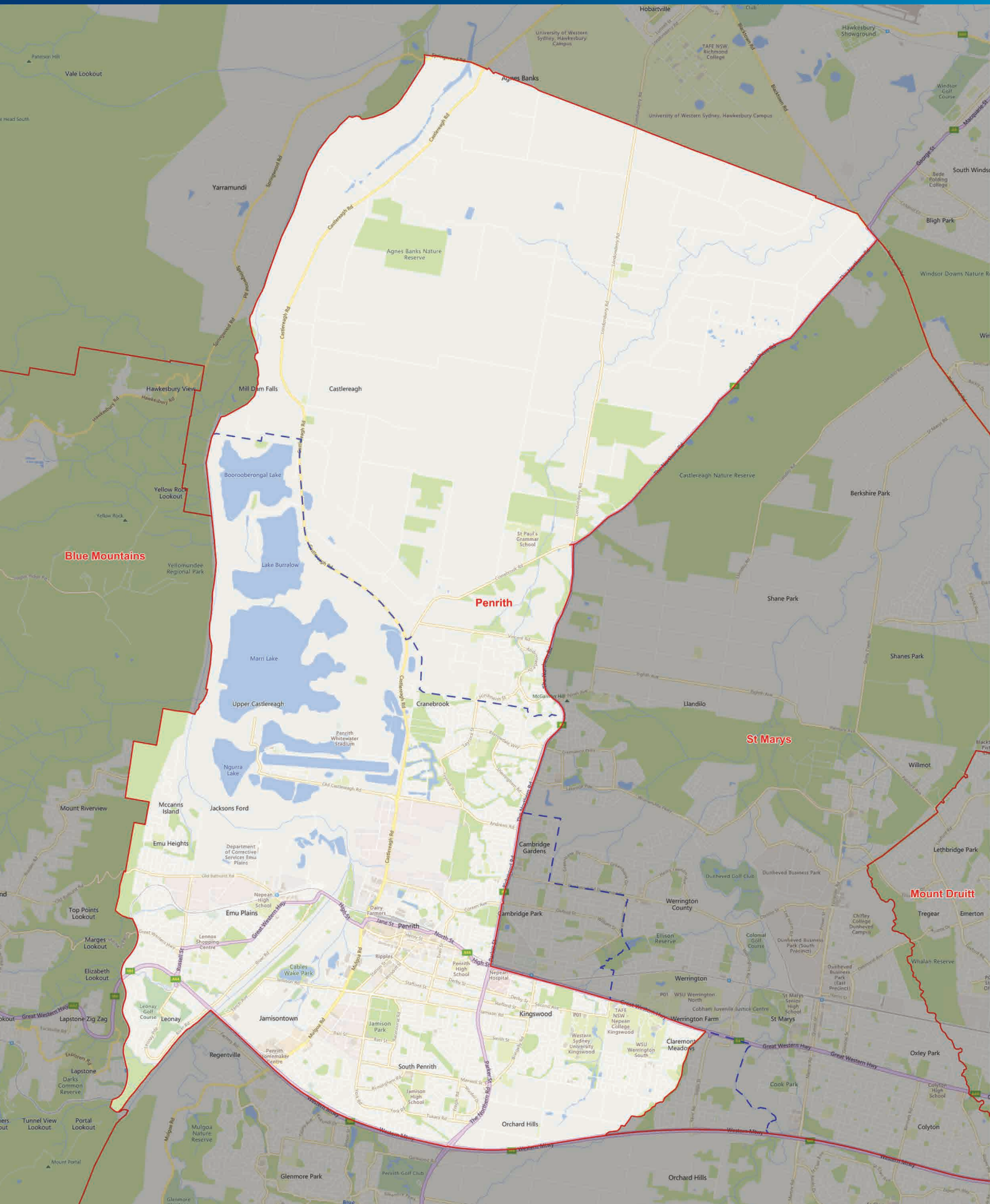
PROPOSED BOUNDARIES

ELECTORAL DISTRICT OF PENRITH

LEGEND:

 Proposed Boundary as per the Draft Determination


 Liberal Party's Suggested Amended Boundary



PROPOSED BOUNDARIES

ELECTORAL DISTRICT OF ST MARYS (EX LONDONDERRY)

LEGEND:

 Proposed Boundary as per the Draft Determination

 Liberal Party's Suggested Amended Boundary

