



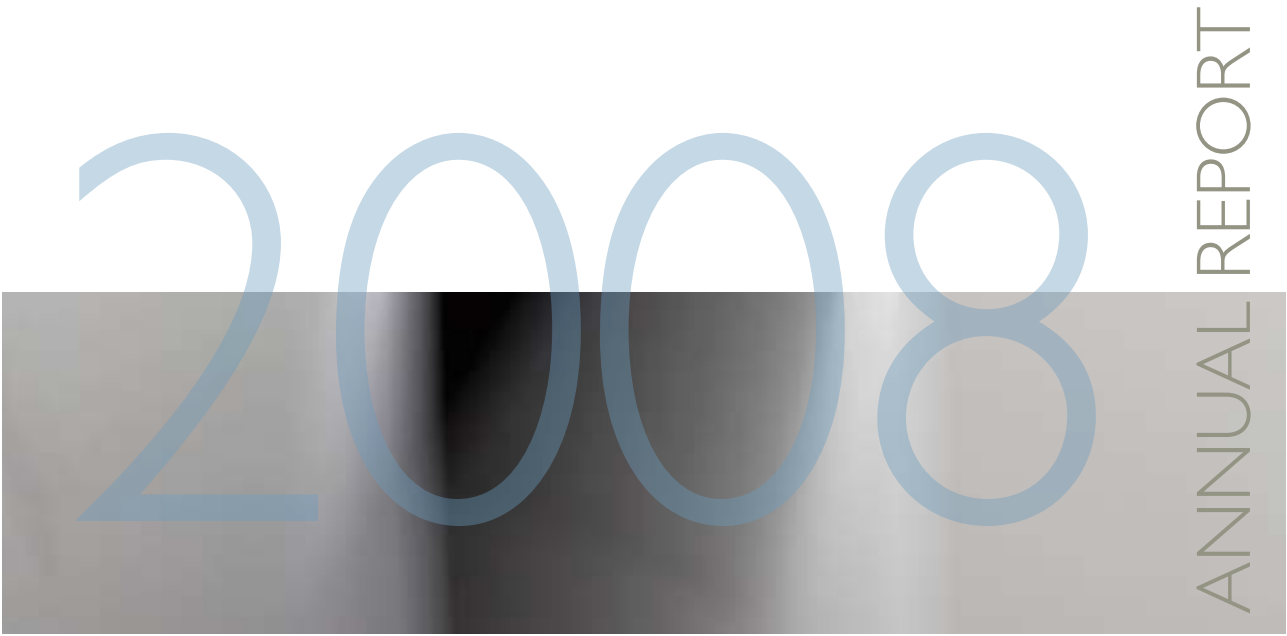
2008

ANNUAL REPORT



2007 - 08

Election Funding Authority
Annual Report



2008

ANNUAL REPORT

Letter to the Minister

The Hon Nathan Rees MP
Premier, Minister for the Arts
Level 40 Governor Macquarie Tower
1 Farrer Place
Sydney NSW 2000

31 October 2008

Dear Premier

In accordance with section 8 of the *Annual Reports (Statutory Bodies) Act 1984*, I submit for tabling in both Houses of Parliament, the report on the operations of the Election Funding Authority of New South Wales for the financial year ended 30 June 2008.



Colin Barry
Chairperson

Table of Contents

Table of Contents	3	- Central Fund and Constituency Fund	16
Chairperson's Report	5	- Political Education Fund	17
The 2007-08 Election Funding Authority		Parliamentary Inquiry into Electoral and Political Party Funding	18
Annual Report	7	Review of website	19
Year's Activities	7	Review of forms	19
Election Funding Authority Mission	8	2007 State Election	20
Election Funding Authority Values	8	- Party, Group and Candidates at the 2007 State Election	20
Our Organisation	9	- Funding Entitlements	20
Who we are	9	- Party, Group and Candidate Education for the 2007 State Election	23
What we do	9	- Party, Group, Candidate and Donor Declarations for the 2007 State Election	23
Services provided	10	Local Government By-elections	24
Stakeholders	10	Briefing of Registered Political Parties on Amendments to the <i>Election Funding Act</i>	24
Resources	10	Our Challenges	25
Meetings of the Election Funding Authority	11	Operating Environment	25
Management and Structure	12	- No means of identifying donors	25
Legislation	12	- Timely receipt of declarations	26
History	12	- Annual Returns and Disclosures by Parties on a Financial Year Basis	26
Our Achievements	13	2008 Local Government Election Preparation	27
Election Funding Authority 2008-2011		- Returning Officer Training	27
Corporate Plan	13	- Candidate Information Seminars	27
Election Funding Authority Objectives	14	- Election Funding Authority Website	28
Election Funding Authority Services	15	- Review of Procedures, Forms and Manuals	28
Election Funding Authority 2007-08 Results and Services Logic	15		
Legislation Reforms	16		
Financial Achievements	16		
Election Funding and Entitlements	16		

Table of Contents

- Updates to Election Management Application for the 2008 Local Government elections	28	- Parliamentary Standing Committee on Political Funding	35
Engaging Stakeholders	29	- Complaints Handling	35
- Election Funding Authority Website	29	- Guarantee of Service	35
- Advertising	29	Production Processes	35
Sustainable Management of Resource Utilisation	29	- Determining Entitlements and Funding	35
Timeliness of Declaration Information	30	- Disclosure Actions	36
		- Follow-up on Prosecutions from Previous Year	36
Our Future	31		
Future Directions	31	Our Finances	41
- Corporate Planning	31	Overview of Finances	41
- Potential changes to the Election Funding Authority operations from the amendments to the <i>Election Funding and Disclosures Act 1981</i>	32	Performance Statement	42
- Future changes to the Election Funding Authority operations from the Parliamentary Inquiry	32	Audit Reports	43
Liaison with Other Jurisdictions	32	- Statement by Members of the Election Funding Authority	43
Research Linkages	32	- Financial Statements	46
Our Operations	33	Appendices	56
Corporate Governance	33	Glossary	114
- Internal Audit Committee	33	Index	116
Performance Management	34	Contacts	118
- Financial budgeting	34		
- Strategic planning	34		
- Risk management	34		
Public Accountability	34		
- Public Availability of Records	34		

Chairperson's Report



I am pleased to provide the 2007-08 Annual Report on behalf of the Election Funding Authority of New South Wales (EFA).

The EFA is comprised of the Electoral Commissioner (Chairperson), a member appointed by the Governor on the nomination of the Premier and a member appointed by the Governor on the nomination of the Leader of the Opposition in the Legislative Assembly. The EFA is responsible for the administration of the *Election Funding Act 1981*.

During the reporting year, the EFA achieved significant governance milestones, including the development of the 2008-2011 Corporate Plan, with performance measures focused on funding, disclosure, organisational development and innovation.

The reporting year also saw the EFA involved in preparing a submission and appearing before the New South Wales Parliament Select Committee on

Electoral and Political Party Funding. The Committee was established to inquire into and report on electoral and political party funding.

The EFA prepared a submission and appeared before the Committee on Monday 3 March and Friday 11 April 2008.

The reporting year has been especially complex for the EFA, with numerous challenges dealing with declarations from the State election held in March 2007.

The introduction of the declarations database assisted the EFA in monitoring donor contributions and the political expenditure of parties, groups and candidates.

The EFA continues to focus on further educating its stakeholders to ensure the highest possible level of compliance from parties, groups and candidates in political contributions and electoral expenditure

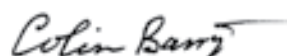
Chairperson's Report

disclosures and to ensure that political donors are aware of their obligations to disclose incurred expenditure exceeding certain limits. The EFA website will serve as a key communication tool at the 2008 Local Government elections providing stakeholders with key electoral funding information, forms and manuals available for download.

The focus of 2008-2009 for the EFA will be the implementation of the new funding and disclosure legislation passed by the Parliament to come into operation for the Local Government elections to be held in September 2008. With over 4,000 candidates likely to contest, 49 political parties registered and a significant number of political donors, the EFA will implement new practices and procedures to deal with disclosure obligations and declarations.

The EFA has received a recurrent appropriation that will enable it to have a permanent branch structure within the New South Wales Electoral Commission.

I am pleased to report that the EFA has operated with absolute impartiality throughout the reporting year, with the support of the administrative staff who perform their role with complete neutrality.



Chairperson

30 October 2008

2007-2008

Election Funding Authority Annual Report



Year's Activities

The 2007-08 Election Funding Authority (EFA) annual report is a report on the year's activities, the EFA's roles and responsibilities and its position in the NSW structure of government.

The key activity areas in the 2007-08 annual report include:

- the processing of election funding declarations from parties, groups, candidates and donors and
- approved electoral payments for funding entitlements to parties, groups and candidates for expenses incurred for the 2007 State election;
- the EFA's submissions and contributions to the Parliamentary Inquiry into Electoral and Political Party Funding; and
- preparation for the 2008 Local Government elections.

Election Funding Authority Annual Report

The report also includes a review of the major challenges for the EFA, a focus on its future operations and full financial statements for the reporting year.

The 2007-08 Election Funding Authority (EFA) annual report is a report on the year's activities, the EFA's roles and responsibilities and its position in the NSW structure of government.

The key activity areas in the 2007-08 annual report include:

- the processing of election funding declarations from parties, groups, candidates and donors and approved electoral payments for funding entitlements to parties, groups and candidates for expenses incurred for the 2007 State election;
- the EFA's submissions and contributions to the Parliamentary Inquiry into Electoral and Political Party Funding; and
- preparation for the 2008 Local Government elections.

The report also includes a review of the major challenges for the EFA, a focus on its future operations and full financial statements for the reporting year.

The 2007-08 annual report and those for previous years can be found on the EFA website www.efa.nsw.gov.au.

Election Funding Authority Mission

To contribute to an impartial electoral system in New South Wales by providing transparent, efficient and unbiased administration of public funding and disclosure legislation.

Election Funding Authority Values

The EFA values are:

- integrity;
- impartiality; and
- professionalism.

Our Organisation



Who we are

The Election Funding Authority of New South Wales (EFA) is established under the *Election Funding and Disclosures Act 1981* (the Act), for which there are two main purposes:

- to prescribe a scheme of public funding of election campaigns for State elections; and
- to provide public disclosure of contributions received and expenditure incurred in relation to State and Local Government election campaigns.

The Act also provides for the payment to eligible parties of funds from the Political Education Fund, which is administered by the EFA.

The Act imposes a duty on the EFA to exercise its functions in a manner that is not biased against, or in favour, of any particular party, group, candidate or other person, body or organisation.

The New South Wales Electoral Commission (NSWEC) is the administrative unit through which the EFA exercises its statutory responsibilities.

What we do

The EFA is responsible for managing:

- applications for registration of individual candidates, groups and agents;
- claims by registered political parties, groups and candidates for payment of election campaign expenditure in respect of State elections;

Our Organisation

- declarations of political contributions received and electoral expenditure incurred by parties, groups, candidates and political donors in respect of State and Local Government elections; and
- claims by registered political parties for payment from the Political Education Fund.

Services Provided

The EFA is committed to quality and the provision of services which meet the needs of stakeholders' requirements and legal obligations. The EFA seeks to perform its functions, activities and responsibilities impartially, effectively and efficiently.

Services include, but are not limited to:

- provision of disclosure documents lodged by candidates, groups, parties and political donors;
- provision of registers of candidates and agents for elections;
- provision of election funding information;
- education programmes for candidates, parties and political donors;
- publications.

Stakeholders

The EFA's stakeholders are:

- the people and electors of New South Wales;
- candidates at elections;
- groups at elections;
- registered political parties;
- members of Parliament;
- government agencies;
- political donors; and
- the media.

Resources

Under section 22 of the Act the EFA cannot employ any staff. The NSWEC, therefore, has two full-time officers in administrative positions carrying out the work of the EFA to ensure compliance with the Act and Regulations. Through the work undertaken by the officers, the EFA is able to provide a full range of services to stakeholders including candidates, groups, political parties, political donors and NSW electors.

Key components of human resource management and industrial relations policies and practices are satisfied indirectly through the resource management planning and reporting activities of the NSWEC.

Our Organisation

Trevor Follett, Director Finance and Administration Branch of the NSWEC, is the Secretary for the EFA. Felicity Wright is the Acting Senior Election Funding Officer for the EFA.

Meetings of the Election Funding Authority

The EFA held regular meetings throughout the reporting year. The following table lists the meeting dates and attendance:

Table 1: Meeting of the EFA

Meeting No	Date	Participants
109	10 August 2007	Colin Barry, Steven Lewis, James Longley, Trevor Follett, Linda Scolah
110	10 October 2007	Colin Barry, Steven Lewis, Edward Pickering, Trevor Follett, Linda Scolah
111	7 November 2007	Colin Barry, Steven Lewis, Edward Pickering, Trevor Follett, Felicity Wright,
112	4 December 2007	Colin Barry, Steven Lewis, Trevor Follett, Felicity Wright
113	30 January 2008	Colin Barry, Steven Lewis, Edward Pickering, Trevor Follett, Felicity Wright
114	12 March 2008	Colin Barry, Steven Lewis, Edward Pickering, Trevor Follett, Felicity Wright
115	2 April 2008	Colin Barry, Edward Pickering, Trevor Follett, Felicity Wright
116	27 June 2008	Colin Barry, Steven Lewis, Edward Pickering, Trevor Follett, Felicity Wright

Our Organisation

Management and Structure

The Act prescribes that the EFA consists of:

- the Electoral Commissioner for New South Wales as Chairperson;
- a member appointed by the Governor on the nomination of the Premier; and
- a member appointed by the Governor on the nomination of the Leader of the Opposition in the Legislative Assembly.

Appointed members' terms of office start six months after the return of the writ for the previous State election and run until six months after the return of the writ for the current election. Members may be re-appointed.

During the 2007-08 year members of the EFA were:

Colin Barry

Chairperson

Steven D Lewis

Appointed on the nomination of the Premier

Edward P Pickering

Appointed on the nomination of the Leader of the Opposition

Both Mr Lewis and Mr Pickering were re-appointed in November 2007, for an additional four-year term.

Michael Causer is the alternate for the member appointed on the nomination of the Premier and James Alan Longley is the alternate for the member appointed on the nomination of the Leader of the Opposition.

Legislation

The EFA's work is governed by the following main pieces of legislation:

- *Election Funding and Disclosures Act 1981* (formerly the *Election Funding Act 1981*)
- *Election Funding Regulation 2004*
- *Parliamentary Electorates and Elections Act 1912*

In June 2008 the NSW Parliament passed an amendment Bill which incorporated the most significant reforms to the *Election Funding Act* since its enactment in 1981. This included changing the name of the Act to the *Election Funding and Disclosures Act 1981*.

History

The Act was passed by NSW Parliament in 1981, to provide for the public funding of parliamentary election campaigns for the public disclosure of contributions received and incurred in relation to election campaigns.

Mr Barry took the position of EFA Chairperson upon his appointment as NSW Electoral Commissioner on 1 July 2004. Mr Lewis and Mr Pickering were both appointed in November 2003.

Our Achievements



Election Funding Authority 2008-2011 Corporate Plan

During the reporting year, the EFA developed a Corporate Plan for 2008-2011 to address the need to measure its performance at both State and Local Government elections.

The EFA plays an important role in providing the mechanism for parties, candidates and donors to operate in an environment of full disclosure. The Corporate Plan focuses on the need to measure the EFA's performance in a manner open to scrutiny.

The results indicators (RI) identified for the EFA in the Corporate Plan address the unbiased provision of public funding and open disclosure of campaign donations.

The key results areas (KRA) have been incorporated into the Corporate Plan to assist in accurately measuring the EFA's performance. The KRAs in the Corporate Plan address:

- funding and disclosure; and
- organisational development and innovation.

Our Achievements

Each KRA identifies performance goals to assess satisfaction as a result of services provided by the EFA and organisation development efforts, how the EFA's performance will be assessed and actions to be taken in order to achieve the identified performance goals.

The EFA Corporate Plan is available on the EFA website www.efa.nsw.gov.au.

Election Funding Authority Objectives

The results indicator identified in the Corporate Plan is a measure of the contribution the EFA has made to the understanding by candidates, groups, parties and donors of their obligations. The EFA alone cannot be held accountable for reaching targets set out in the results indicator; however, strategies implemented contribute to targets being reached.

The targets identified under the results indicator include:

- number of successful EFA prosecutions (target = 100%); and
- percentage of declarations lodged with EFA by due date (target = 95%).

The EFA is currently reviewing its strategies to increase the understanding by candidates, groups, parties and donors of their declaration obligations. Communication through the EFA website, the provision of information through candidate seminars, manuals and training programmes in the lead up to the 2008 Local Government elections will further increase the EFA's capability to reach the set targets.

Our Achievements

Election Funding Authority Services

During the reporting year the EFA undertook the following services to meet the KRAs in the Corporate Plan:

- on 15 February 2008 the EFA made a submission to the NSW Parliament Select Committee on Electoral and Political Party Funding on areas of reform concerning funding and disclosure processes;
- the EFA has been involved in the training of returning officers for the 2008 Local Government elections through training sessions and manuals, and by education of candidates at information seminars and through candidate handbooks;
- upgrades to the EFA website have been ongoing throughout the reporting year. They include improved forms and manuals for election funding stakeholders and the availability of election funding reports from the 2007 State election for parties, groups, candidates and donors; and
- during the reporting year the EFA conducted an internal audit of the end to end processing of election and political education funding. The audit involved a review of the EFA's system to calculate and pay funds accurately and appropriately to parties, groups and candidates.

Election Funding Authority 2007-08 Results and Services Logic

During the reporting year the EFA undertook a review of the EFA Results and Services Logic. The revised Results and Services Logic follows.

Vision

Impartial electoral system

Planned Results

Unbiased public funding and open disclosure of campaign donations

Election Funding Authority Results

- Unbiased public funding of State election campaigns
- Public disclosure of sources of funds and expenditure incurred in election campaigns
- Impartial payment to eligible parties of funds from the Political Education Fund

Service Groups

- Assess entitlements of eligible parties to political funding
 - Liaison with political parties on contributions and expenditure incurred in election campaigns
 - Legal action in relation to failure to comply with disclosure requirements
-

Our Achievements

Legislation Reforms

On Wednesday 18 June 2008, the Attorney General, The Hon. John Hatzistergos, introduced a Bill in the NSW Parliament. It incorporated the most significant reforms to the *Election Funding Act* since its enactment in 1981.

The Bill covered the following key areas:

- bi-annual disclosure of political donations and electoral expenditure for registered political parties, members of Parliament and councillors;
- uniform political donation disclosure limit of \$1,000;
- mandatory disclosure of loans;
- new rules for managing campaign finances;
- ban on certain “in kind” donations;
- new offences for failing to lodge a declaration and making a false statement; and
- increased powers for the EFA.

The new disclosure rules will affect:

- Local Government councillors;
- Local Government candidates and groups;
- State government candidates and groups;
- members of NSW Parliament;
- political parties; and
- political donors.

On Wednesday 25 June 2008 the Bill was passed by Parliament and was assented to on Monday 30 June 2008.

Financial achievements

Full financial reports for the EFA can be found in the *Our Finances* chapter on page 41.

Election Funding and Entitlements

Central Fund and Constituency Fund

During the reporting period, and as a result of the 2007 State election being held on 24 March 2007, the EFA established a Central Fund and a Constituency Fund. The EFA determined the amount available in each fund, after the Writs were issued for the 2007 State election, in accordance with a formula prescribed in the Act.

The Central Fund provides for payments to be made to eligible parties, independent groups and independent candidates that contest the election for the Legislative Council.

The Constituency Fund provides for payments to be made to eligible candidates who contest the election for the Legislative Assembly. A total of \$42,222 from the Constituency Fund was available for distribution in each Legislative Assembly district at the 2007 State election. Eligible candidates who received at least four percent of the primary votes for their district at the Legislative Assembly election were entitled to receive funding from the Constituency Fund.

Our Achievements

Full reports on the amounts available by percentage of primary votes received by each candidate, their maximum funding entitlement and the amount paid for both Legislative Assembly and Legislative Council candidates are available at Appendix 26 and Appendix 27 and on the EFA website (www.efa.nsw.gov.au).

Political Education Fund

During the reporting year the EFA made payments from the Political Education Fund to the eligible registered political parties.

Payments from the fund are made annually to

registered political parties which have endorsed candidates for election to the Legislative Assembly at the general election, and which are entitled to receive funding from the Central Fund.

Funding is provided strictly for the purposes of political education, which does not include expenditure by parties for election campaigns or expenditure for travel and accommodation.

Five registered political parties lodged declarations and received funding from the Political Education Fund during the reporting year.

Table 2: Political Fund Distributions

POLITICAL EDUCATION FUND DISTRIBUTIONS			
	2006	2007	2008
Australian Labor Party (NSW Branch)	\$688,618	\$688,618	\$692,376
Christian Democratic Party (Fred Nile Group)	\$32,986	\$32,986	\$48,710
Country Labor Party	\$126,891	\$126,891	-
Liberal Party of Australia New South Wales Division	\$472,444	\$472,444	\$530,630
National Party of Australia - NSW	\$184,002	\$184,002	\$198,012
The Greens	\$157,685	\$157,685	\$176,402
TOTAL	\$1,662,626	\$1,662,626	\$1,646,130

All parties received their maximum entitlement.

Our Achievements

Political Party Funding

On 27 June 2007 the Select Committee on Electoral and Political Party Funding was established to inquire into and report on matters relating to the public funding, disclosure of political donations and election expenditure at a State and Local Government level in NSW.

The Committee was chaired by Reverend the Hon Fred Nile and consisted of two members of Government, two members of the Opposition and two cross bench members.

On 19 November 2007 the Committee called for submissions, with a closing date of 2 March 2008. A total of 165 submissions were lodged, including one from the EFA on 15 February 2008.

The EFA submission dealt with areas for reform, including:

- disclosure returns;
- improved identification of donors;
- registration under the *Election Funding Act 1981*; and
- electronic filing of information.

Public hearings ran over five days in 2008:

- Monday 3 March;
- Monday 10 March;
- Monday 31 March;
- Friday 4 April; and
- Friday 11 April.

The EFA was represented by the Chairperson, Colin Barry and Secretary, Trevor Follett on 3 March and 11 April.

The final report from the Committee was handed down on Thursday 19 June 2008. The report contained 47 recommendations covering a range of areas to reform the electoral funding scheme in NSW, with a particular focus on the regulation of political donations. A full copy of the report is available on the NSW Parliament website (www.parliament.nsw.gov.au).

A number of the recommendations were included in the *Election Funding Amendment (Political and Expenditure) Bill 2008*.

Our Achievements

Review of website

During the reporting year the EFA continued to update its website to ensure that election funding stakeholders and the public have ongoing access to up-to-date information.

The uploading of the election funding reports from the 2007 State election was a sizeable task undertaken during the reporting year.

They included:

- declarations lodged by Legislative Assembly candidates by electoral district;
- declarations lodged by parties – summary reports and detailed reports;
- declarations lodged by Legislative Council groups – summary reports and detailed reports;
- declarations lodged by Legislative Council candidates – summary reports and detailed reports;
- declarations lodged by donors – summary reports and detailed reports; and
- summary of declarations and amendments published since original publication of reports.

In the lead-up to the 2008 Local Government elections the website homepage led interested users directly to pages containing information for parties, groups and candidates who contest Local Government elections and political donors who contribute to Local Government election campaigns.

Review of forms

The EFA undertook a review of relevant forms and manuals prior to the 2008 Local Government elections. Eight documents were available for parties, candidates, groups and political donors to assist in fulfilling election funding obligations.

Forms covered issues such as:

- appointment of a party agent;
- appointment of official agent;
- application for registration of a candidate;
- lodging a declaration; and
- extension of time to lodge a declaration.

Manuals covered practical information about the disclosure obligations and instructions on completing and lodging a declaration.

Forms and manuals were made available to election funding stakeholders on the EFA website, or were mailed or emailed to stakeholders upon request.

Our Achievements

2007 State Election

Party, Group and Candidates at the 2007 State Election

A major achievement for the EFA during the reporting year was the processing of election funding declarations from parties, groups, candidates and donors and the payments for funding entitlements for expenses incurred in the 2007 State election.

The EFA's legislative responsibilities are prescribed in the Act to ensure the transparency of NSW election campaign processes. The responsibilities for State elections include the provision of:

- a scheme of public funding of State election campaigns; and
- the public disclosure of contributions and expenditure incurred in election campaigns.

Sixteen registered political parties endorsed candidates at the 2007 State election. Of the 870 candidates, 710 were endorsed by registered political parties.

Funding entitlements

For each State election the EFA establishes a Central Fund and a Constituency Fund. The amounts credited to the funds for a State election is determined by the EFA as soon as possible after the day the Writs are issued for the election (Monday, 5 March for the 2007 State election). The amounts credited to the funds are determined in accordance with a formula prescribed in the Act. Of the total amount determined, two thirds is credited to the Central Fund and one third to the Constituency Fund.

The Central Fund provides for payments to be made to eligible parties, independent groups and independent candidates that contest the election for the Legislative Council. At the 2007 State election \$7,853,422 was available for distribution, according to certain criteria.

Our Achievements

Table 3: Entitlements for the 2007 Legislative Council election.

	Percentage of Primary Votes	Entitlement \$	Amount Paid \$
Registered Political Parties			
Australian Democrats (NSW Division)	1.78	-	-
Australian Labor Party (NSW Branch)	39.14	3,426,979	3,426,979
Australians Against Further Immigration	1.64	-	-
Christian Democratic Party (Fred Nile Group)	4.42	387,204	387,204
Horse Riders Party	0.57	-	-
Outdoor Recreation Party			
Liberal Party of Australia New South Wales Division	34.22	2,996,107	1,997,405
National Party of Australia - NSW			998,702
Peter Breen - Human Rights Party	0.44	-	-
Restore the Workers Rights Party	0.92	-	-
Save Our Suburbs	0.31	-	-
Socialist Alliance	0.40	-	-
The Fishing Party	1.53	-	-
The Greens	9.12	798,434	466,950
The Shooters Party	2.79	244,696	244,696
Unity Party	1.21	-	-
Independent Group			
A	0.68	-	-
D	0.01	-	-
F	0.50	-	-
H	0.08	-	-
M	0.09	-	-
Ungrouped Candidate			
BODLAY, Jordie	0.00	-	-
CARBURY, Richard	0.00	-	-
FRASER, Dawn	0.12	-	-
LOVETT, Ryan	0.00	-	-
MACDONALD, Alasdair	0.00	-	-
NUNEZ, Jose	0.00	-	-
ROFE, David	0.01	-	-
Undistributed Funds \$		2	

Our Achievements

Pursuant to Part 5 Division 4 of the Act, at the 2007 State election a total of \$42,222 was available for distribution in each Legislative Assembly district from the Constituency Fund. Sixty three candidates received the maximum entitlement of \$21,111.

A further 186 were ineligible to receive any funding because they achieved less than 4 percent of the total votes for the electoral district.

A total of \$236,477 (6% of the total Constituency Fund) remained undistributed after the 2007 State election.

Table 4: Expenditure and contributions for the 2007 State election

	Total donations (\$)	Total expenses (\$)
Registered Political Party	80,904,293	25,736,138
Group	2,356	1,925
Candidate	9,211,259	10,770,796

	Donations made (\$)	Expenditure incurred (\$)	Donations received (\$)
Donor	4,728,330	3,700,162	117,814

Table 5: Total funds for the 2007 State election

	Maximum Entitlement (\$M)	Payment (\$M)	Payment Ratio
Central Fund	7.85	7.58	96.6%
Constituency Fund	3.93	3.59	91.3%
State election 2007 Funding	11.78	11.17	94.8%
Political Education Fund	1.66	1.66	100.0%
Total Funding 2007	13.44	12.83	95.4%

Our Achievements

Party, Group and Candidate Education for the 2007 State election

Handbooks were developed for parties, groups, candidates and donors to assist them in better understanding their requirements under the legislation. Handbooks included practical information about election funding entitlements and disclosure obligations specific for each stakeholder group.

Party, Group, Candidate and Donor Declarations for the 2007 State election

Declarations for the 2007 State election were due 120 days after the date for the return of the Writs. The return of the Writ date for the 2007 State election was 5 May, making the due date for declarations 30 August.

Approximately 90 percent of parties, groups and candidates lodged declarations by the due date.

The legislation also allows for extensions of time to be requested by parties, groups and candidates submitting declarations. The EFA received 118 requests for extension from candidates. The longest extension allocated was one month to 30 September 2007.

The following table illustrates the influx of declarations before and after the due date of 30 August 2007.

Table 6: 2007 State General election declarations received by month

	Mar-Jun 07	Jul 07	Aug 07	Sept 07	Oct 07	Nov 07	Dec 07
Parties	3	2	7	2	1	-	-
Groups	3	1	6	6	1	-	-
Candidates	191	121	396	100	22	12	2
Donors	39	79	461	347	606	209	27
Total	236	203	870	455	630	221	29

Two parties, two groups, 26 candidates and 916 donors failed to lodge a declaration with the EFA for the 2007 State election. These cases were referred to the NSW Crown Solicitor to start proceedings for a breach of the legislation.

Full declaration reports for the 2007 State election can be found on the EFA website – www.efa.nsw.gov.au.

Our Achievements

Local Government By-Election

While there were no Local Government by-elections held during the reporting year, the EFA processed declarations from three by-elections held in the

previous reporting year. The following table lists each by-election, the date it was held and the number of candidates.

Table 7: Local Government by-elections

By-election	Date	Number of candidates
Hornsby C ward	17 February 2007	3
Waverley - Waverley ward	19 May 2007	6
Wentworth	19 May 2007	2

All candidates who contested the elections were included in the Local Government Register of Candidates as at election day. No official agents were appointed by candidates in the three by-elections.

Three candidates were endorsed by a political party. All parties contesting an election were registered as at election day for the by-election under Chapter 10 Part 7 of the *Local Government Act 1993*.

Eight candidates lodged declarations of political contributions received and electoral expenditure incurred, within 120 days of election day. Three candidates lodged declarations outside the 120 days.

Briefing of Registered Political Parties on Amendments of the *Election Funding Act*

In June 2008 the EFA began a series of briefings of registered political parties focusing on the amendments to the *Election Funding and Disclosures Act* and the effects on registered political parties.

The presentations covered:

- new reporting periods;
- campaign finance accounts;
- disclosure periods;
- limits to gifts and in kind donations;
- appointments of official agents;
- declaration of loans;
- training programmes;
- penalty provisions; and
- campaign finance account.

Our Challenges



Operating Environment

No means of identifying donors

A major challenge during the reporting year for the EFA was related to the correct identification of political donors. Legislation prescribes that people and organisations who incur electoral expenditure totalling more than \$1,500 must lodge with the EFA a declaration that discloses political donations and other electoral expenditure.

The challenge faced by the EFA is the matching of donors' names on declarations because details are provided by parties, groups and candidates in varying ways. Currently, the guidelines do not accurately address requirements about the way in which donors' details must be lodged and the identification information required.

A donor may, for instance, lodge a declaration using initials and surname and home address, whereas parties, groups or candidates may list donors, using their full name and a company address. In many instances there is no way of determining if one is the same person or same organisation as another.

The EFA submission to the Select Committee included recommendations to improve identification of political donors. Recommendations included the requirement to lodge declarations using information as it appears on the NSW electoral roll and, where a donor is a company, to supply the Australian Business Number (ABN). The identification of political donor companies by their ABN was accepted.

Our Challenges

It is noted that one of the amendments to the Act makes it a requirement that an ABN be provided by an entity if it makes a reportable political donation (ie \$1,000 or more).

Table 8: Disclosures to the EFA 2007 State election

	Party, Group and Candidate Returns	Donor Returns
Number of donors	2,735	1,815
Number of donations	9,681	8,917
Value	\$51.5M	\$37.5M

Timely Receipt of Declarations

The timely receipt of party and candidate declarations and political donor declarations remains a challenging area for the EFA.

For the 2007 State election declarations, the EFA developed two databases one containing information from party and candidate declarations and one from donor declarations. Declarations for the 2007 State election were due on 30 August 2007.

The EFA wrote to parties, groups, candidates and donors who had failed to lodge a declaration by the due date, reminding them of their responsibilities and obligations. As a result of this mailout the EFA received the majority of declarations in October 2007.

Those parties, groups, candidates and political donors who continued to fail to lodge a declaration for the 2007 State election, and who were listed on one of the databases, were referred to the Crown Solicitor. Over 900 compliance matters were involved.

Table 9: Compliance 2007 State election

	Declarations	Non-compliance
Parties	16	2
Party Agents	-	2
Groups	17	2
Candidates	844	26
Political donors	2,735	916
Totals	3,611	948

Annual Returns and Disclosures by Parties on a Financial Year Basis

Under the current legislation, parties, groups and candidates are required to submit disclosures to the EFA for both State and Local Government elections covering the election periods starting on the 31st day after the previous election and ending on the 30th day after the current election. The political donations and electoral expenditure disclosed in a declaration must have occurred within this period. For groups, the start of their period is on nomination day, making a very short disclosure period.

Until the legislation amendment was approved later in the reporting year, the overlapping of the four-year disclosure periods for State and Local Government elections provided complexity for parties, candidates and donors. A requirement to submit annual returns detailing political contributions received and electoral expenditure incurred, on a financial year basis, could result in greater accuracy, improved transparency, higher level of compliance and could minimise apparent anomalies.

Our Challenges

Amendments to the Act would be required before these changes to the system could be implemented.

It is noted that the Act has now been amended to provide for six monthly reporting.

2008 Local Government Elections Preparation

Much of the second half of the reporting year focused on preparations for the 2008 Local Government elections. The substantial number of candidates receiving funding and political donations presents a challenge for the EFA. Some of the preparations undertaken during the reporting year are reviewed below.

It is expected that over 4,000 candidates and 43 registered political parties will contest the 2008 Local Government elections. Approximately 90 per cent of candidates are expected to stand as Independents, with many unaware of their responsibilities and obligations under the legislation. Each of these candidates, political parties, groups and donors will be expected to lodge declarations as required under the Act.

Returning Officer Training

Training of returning officers for the 2008 Local Government elections was undertaken during the reporting year. The EFA conducted a workshop at each training session, covering the role of the EFA and the returning officers' part in the processing of

registrations for parties, groups and candidates for election funding purposes.

This was the first time that EFA training had been provided to the returning officers for a Local Government election. It was well received by participants.

Candidate Information Seminars

To assist candidates in understanding their declaration requirements for the 2008 Local Government elections the EFA provided information for inclusion in the candidate seminars conducted by the NSWEC during May and June 2008.

Information for candidates included:

- registration for election funding purposes;
- appointing an official agent; and
- lodging a declaration.

The candidate seminars were well attended across NSW, with the EFA content valued by participants.

Our Challenges

Election Funding Authority Website

All forms and manuals for the 2008 Local Government elections will be available on the EFA website. Once election declarations are available, the election funding reports will be made available on the website.

The EFA will also publish a register of candidates and of official agents for the elections. These will be available prior to election day for public inspection.

Review of Procedures, Forms and Manuals

During the reporting year the EFA undertook significant updates to election funding procedures, forms and manuals for the 2008 Local Government elections. Because of the complexity of requirements for parties, groups and candidates, the EFA takes on the responsibility of providing up-to-date information of the obligations under the Act.

Updates to Election Management Application for the 2008 Local Government Elections

For the 2007 State election the EFA developed a module for the Election Management Application (EMA) to assist with registration of candidates and groups for election funding purposes, recording and reporting of declarations and the processing and reporting of claims for payment.

The EFA module will be updated for the September 2008 Local Government elections to take into consideration undivided and divided councils and to assist with the significant number of declarations from candidate and donors. All amendments made were based on the election funding legislation.

Our Challenges

Engaging Stakeholders

Ensuring that EFA stakeholders are well informed and provided with accurate information on election funding, disclosure requirements and the lodging of declarations, presents challenges for the EFA.

Election Funding Authority Website

The EFA website continues to be a key focus area for communication with stakeholders. It contains information relevant to State and Local Government elections, with information updated on a regular basis to ensure that stakeholders have access to all relevant information. All EFA forms and publications are available on the website for stakeholders to download.

Advertising

As part of the preparation for the 2008 Local Government elections the EFA undertook press advertising in the week prior to the close of nominations and again in the week prior to election day reminding candidates and donors of their obligations and responsibilities.

Sustainable Management of Resource Utilisation

The availability of trained staff continues to be a challenge for the EFA. The timing of when staff are required is unpredictable and depends largely on the receipt of declarations from parties, groups, candidates and donors. The processing of declarations in a timely manner requires the EFA to engage additional assistance.

The processing of declarations is a significant, time consuming process, involving the entry of numerous paper based documents into the EFA database. Donors complete a paper form and return it to the EFA for manual data entry. In some cases donors provide spreadsheets or extracts from accounting systems for retyping into the EFA system.

Some declarations received by the EFA contain a substantial amount of paper based information, all requiring data entry into the EFA module. The double handling of the information can result in data validation issues. A system allowing donors to complete declarations online through a web based interface would significantly reduce the need for extra resources for data entry, while also minimising any data validation issues.

Our Challenges

Timeliness of Declaration Information

The timeliness of publicly available declaration information remains a challenge. The EFA aims to have declaration information in the public domain as soon as possible after an election. On occasions the high volume, the accuracy of the information and the many processes involved, lengthen the time period to make the information available.

During the reporting year, declaration information for the 2007 State election was made publicly available. Under the Act, declarations are to be submitted with the EFA 120 days after the return of the Writ. The due date for declarations was Thursday 30 August 2007.

The Act also allows for extensions to be requested. During the declaration processing phase, extensive communication with candidates, parties and donors is undertaken to ensure that the information provided is accurate.

Despite the due date of 30 August, the majority of declarations for the 2007 State elections were received by the EFA in October 2007. It is thought that the late submission of these declarations reflects a general lack of understanding within the community about the responsibilities and obligations of donation recipients and donors. For the 2007 State election the EFA developed a new database to assist in matching declarations that were provided by the parties and the candidates against declarations provided, or not provided, by the political donors. In October 2007 the EFA wrote to donors listed in declarations of parties and candidates who had failed to lodge declarations reminding them of their obligations.

The legislation details ways in which the declaration information is to be made available. While the declaration information is available during office hours in hardcopy, during the reporting year the EFA made available on the website summary reports of the information from the declarations.

Our Future



Future Directions

Corporate Planning

The current Corporate Plan sets out the future priorities, performance goals and business direction for the EFA for 2008 through to 2011. In response to the amended legislation, the EFA will undertake a review of the Corporate Plan.

The EFA will have responsibilities relating to the 2008 Local Government elections, the 2011 State election, and if they arise, State by-elections and Local Government by-elections.

Future directions for the Local Government elections and the next reporting year focus around the key results areas set out in the Corporate Plan. Shorter term priorities focus on the September 2008 Local

Government elections and the upcoming reporting year, namely:

- candidates, groups and parties informed about responsibilities;
- the public informed of political donations and electoral expenditure;
- the EFA has access to NSWEC's staff, systems; and
- processes to provide value for money for the people of NSW.

Medium to longer term priorities and goals of the EFA will continue to focus on the challenges associated with a system of unbiased public funding and open disclosure of campaign donations at all NSW elections.

Our Future

Potential changes to the Election Funding Authority operations from the amendments to the *Election Funding and Disclosures Act 1981*

The amendments made to the *Election Funding and Disclosures Act 1981* have significant implications for the operations of the EFA. Work has begun on an assessment of their impact on the work processes, structure and management.

A major focus of the coming reporting year will be the appointment of staff to the EFA. The NSWEC employed full-time staff in administrative positions to perform the work of the EFA. The legislative amendments will result in the appointment of a Director of Election Funding and Disclosure and of permanent election funding officers.

Future changes to the Election Funding Authority operations from the Parliamentary Inquiry

The Legislative Council Select Committee inquiry report on Electoral and Political Party Funding was presented to the NSW Parliament on Thursday 19 June 2008.

The Select Committee made 47 recommendations. Many will impact on the work undertaken by the EFA in the coming year. The EFA will closely review the recommendations and, where appropriate, take the appropriate measures to ensure that

recommendations are achieved.

The complete version of the Legislative Council Select Committee's report can be found at www.parliament.nsw.gov.au.

Liaison with Other Jurisdictions

Because of its interest in continuously improving its understanding of election funding activities across Australia, the EFA will, in the upcoming reporting year, undertake a review of electoral funding operations in other Australian State and Territory jurisdictions and at a federal level.

The EFA will also monitor changes across Australian election funding legislation and will continue to increase its communication and contact with other jurisdictions.

Research Linkages

The EFA endeavours to increase its awareness of electoral funding systems in Australia and internationally as a means of continuously reviewing its performance.

The coming reporting year will present the EFA with an opportunity to conduct further research into electoral funding systems by conducting a detailed literature review and undertaking research into the findings.

Our Operations



Corporate Governance

The EFA contributes to an impartial electoral system by providing a transparent, efficient and unbiased administration of public funding and disclosure legislation. To achieve this, the EFA's services need to be supported by appropriate business processes.

Internal Audit Committee

The NSWEC Internal Audit Committee reviews practices and processes, and can make recommendations designed to reduce business risk and improve corporate governance. It also reviews the EFA's practices and processes.

The Internal Audit Committee consists of:

- Jim Mitchell, Chairman;
- Candy Nay, senior officer from the Local Government sector ; and
- Kathleen Haddock, Returning Officer.

The NSWEC Director, Finance and Administration is the secretary of the Committee.

The following attended meetings of the Committee by invitation:

- Colin Barry, Electoral Commissioner
- Trevor Follett, Director Finance and Administration
- Don Walter, Auditor Walter Turnbull
- Damian Knowles, Auditor Walter Turnbull

Our Operations

At various meetings, the external auditors and the NSW Audit Office were invited to attend. Walter Turnbull were contracted by the NSWEC to provide internal audit services to the EFA. A representative from Walter Turnbull was invited to each Committee meeting.

In meetings held during the reporting year the Committee agreed to contract Walter Turnbull to conduct an internal audit of the end to end processing of election and political education funding.

No critical issues were identified through the internal audit, however, recommendations were made to improve efficiency and internal controls. The EFA has developed a plan identifying the actions required and priorities to deliver on the recommendations during the next reporting year.

Performance Management

Financial budgeting

The budget for the EFA for the 2007-08 financial year was \$10.1M. An expenses budget summary can be found in *Our Finances* on page 41 of this publication.

Strategic planning

To underpin its overall strategic planning approach, the EFA undertook a scenario identification process. This proceeded and was incorporated into the corporate planning exercises for 2008 - 2011.

Risk management

As part of the corporate planning process a risk management assessment was undertaken. The risks identified have been used in the formulation of ongoing management and project plans and the development of the ongoing internal audit programme.

Further information on the internal audit programme can be found at page 33.

Public Accountability

Public Availability of Records

The EFA is required by legislation to make available for public inspection for up to six years after an election:

- declarations;
- claims for payment; and
- associated papers lodged by parties, groups, candidates and political donors.

In addition, for State and Local Government elections, the EFA is required to make available:

- a register of candidates;
- a register official agents; and
- a register of party agents.

Our Operations

The documents are available for public inspection at the EFA's office in Sydney and on written request and the payment of a fee, are available by mail or facsimile.

The website publishes reports that summarise the information contained in declarations lodged with the EFA.

Parliamentary Standing Committee on Political Funding

The Select Committee on Electoral and Political Party Funding was established to inquire into and report on electoral and political party funding. The Committee is an independent review body.

The EFA made a submission to the Inquiry on the 15 February 2008 and provided the Committee with additional documents for tabling and responses to questions taken on notice. The EFA Chairperson and Secretary both appeared before the Committee to answer questions concerning disclosure periods, declarations and expenditure.

Complaints Handling

The EFA reviews complaints if sufficient evidence is provided to indicate a possible breach of the Act.

Complaints were received during the reporting year from stakeholders concerning a range of election issues.

Main complaints categories included:

- alleged false claims in declarations; and
- alleged failure to lodge a declaration.

Guarantee of Service

The Act determines that the EFA calculates entitlements and makes payments from the Central Fund for general elections or by-elections to registered political parties within 14 days. When a claim cannot be finalised in the required time a pre-payment, equal to 70 percent of the estimated total, is to be made to the registered party agent for the party.

The EFA made four pre-payments in this reporting period totalling \$2,420,889.80. Provision for the EFA's commitment and guarantee of service is part of the NSWEC Guarantee of Service available on its website (www.elections.nsw.gov.au)

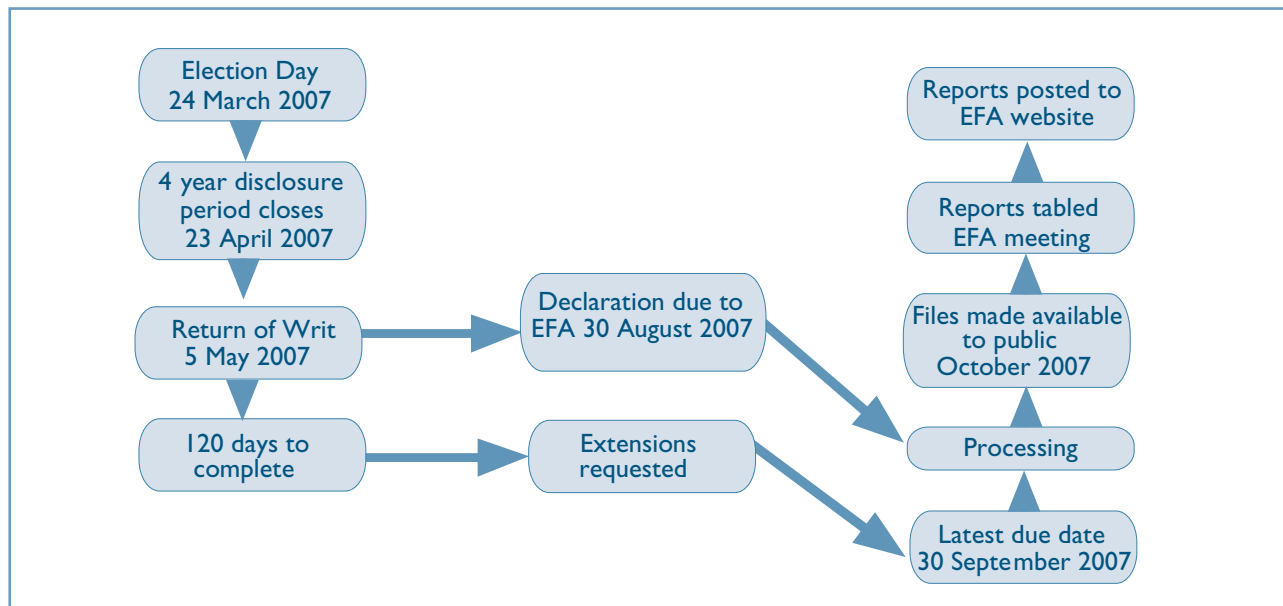
Production Processes

Determining Entitlements and Funding

Determining election funding and entitlements is a significant process. Further information on the EFA's role in determining entitlements and funding is available on page 13. Funding and entitlement reports for the 2007 State election are available on the EFA website (www.efa.nsw.gov.au).

Our Operations

Figure 1: Disclosure timeframes



Disclosure Actions

Election declarations for the 2007 State election were due to the EFA on 30 August 2008. Figure 1 illustrates the disclosure timeframe. Disclosures numbering 904 were expected to be lodged by parties, groups and candidates.

Eighty-one extensions of time were granted. Thirty parties, groups and candidates were referred to the Crown Solicitor for further action.

During February 2008 the disclosure documents were uploaded to the EFA website.

Follow up on Prosecutions from Previous Year

Under section.111 of the Act, the EFA may approve the start of proceedings before a court for an alleged breach of the Act or the Regulation. Proceedings in respect of an offence against the Act or the Regulation may only be started within three years after the date of the alleged breach.

During the reporting year the EFA commenced proceedings against candidates who failed to lodge a 'Declaration of Political Contributions Received and Electoral Expenditure Incurred', or who failed to vouch adequately for the expenditure disclosed in a declaration lodged with the EFA within the prescribed time.

Our Operations

Table 10. 2007 Referrals to the Crown Solicitor - candidates and groups who have not submitted a declaration of political contributions received and electoral expenditure incurred

Candidate name	Type of Election	District	Election Date	Party Affiliation	Date for approval of proceedings	Outcomes	Outcome Date
Browne, Robert	LG	Hornsby, North Ward	16/12/06	-	22/06/07	Withdrawn – complied	18/10/07
Borsak, Cheryl	LG	Ashfield, South Ward	23/09/06	No Politics	22/06/07	Withdrawn – complied	27/07/07
Gankin, Marina	LG	Waverley, Waverly Ward	19/05/05	-	04/12/07	Withdrawn – complied	31/01/08

In 2007 the EFA started proceedings against the candidates listed in Table 11.

Our Operations

Table 11. 2008 Referrals to the Crown Solicitor – candidates, groups and parties who have not submitted a declaration of political contributions received and electoral expenditure incurred

CANDIDATE NAME	TYPE OF ELECTION	REFERRAL TYPE	ENDORSED BY	ELECTORAL DISTRICT OR LEGISLATIVE COUNCIL (LC)	DATE OF FINAL REMINDER SENT	DATE FOR APPROVAL OF PROCEEDINGS
Adams, Anthony	State Election 2007	Candidate	Restore the Workers Rights Party	LC/Group L	5/09/2007	30/01/2008
Adams, Donna	State Election 2007	Candidate	Restore the Workers Rights Party	LC/Group L	5/09/2007	30/01/2008
Aussie-Stone, Marcus	State Election 2007	Candidate		Keira	5/09/2007	30/01/2008
Begg, David	State Election 2007	Candidate	Outdoor Recreation Party	Terrigal	5/09/2007	30/01/2008
Bhatti, Surbjit	State Election 2007	Candidate	Australian Democrats (NSW Division)	LC/Group G	5/09/2007	30/01/2008
Crossley, Graham	State Election 2007	Candidate	Horse Riders Party	LC/Group P	5/09/2007	30/01/2008
Dyason, Arthur	State Election 2007	Candidate		LC/Group M	5/09/2007	30/01/2008
Forbes, James	State Election 2007	Candidate	Restore the Workers Rights Party	LC/Group L	5/09/2007	30/01/2008
Gissell, Barry	State Election 2007	Candidate	Restore the Workers Rights Party	LC/Group L	5/09/2007	30/01/2008
Gissell, Jody	State Election 2007	Candidate	Restore the Workers Rights Party	LC/Group L	5/09/2007	30/01/2008
Johnston, Ian	State Election 2007	Candidate		Hornsby	5/09/2007	30/01/2008
King, Yvonne	State Election 2007	Candidate	Restore the Workers Rights Party	LC/Group L	5/09/2007	30/01/2008
Marr, Todd	State Election 2007	Candidate	Restore the Workers Rights Party	LC/Group L	5/09/2007	30/01/2008

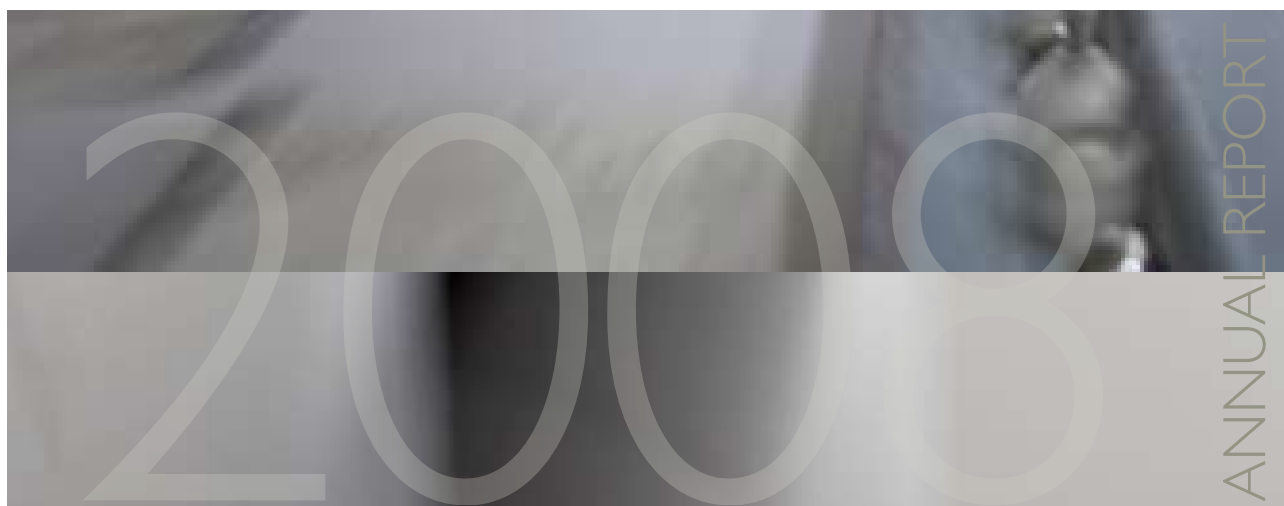
Our Operations

CANDIDATE NAME	TYPE OF ELECTION	REFERRAL TYPE	ENDORSED BY	ELECTORAL DISTRICT OR LEGISLATIVE COUNCIL (LC)	DATE OF FINAL REMINDER SENT	DATE FOR APPROVAL OF PROCEEDINGS
Begg, David	State Election 2007	Candidate	Outdoor Recreation Party	Terrigal	5/09/2007	30/01/2008
Bhatti, Surbjit	State Election 2007	Candidate	Australian Democrats (NSW Division)	LC/Group G	5/09/2007	30/01/2008
Crossley, Graham	State Election 2007	Candidate	Horse Riders Party	LC/Group P	5/09/2007	30/01/2008
Dyason, Arthur	State Election 2007	Candidate		LC/Group M	5/09/2007	30/01/2008
Forbes, James	State Election 2007	Candidate	Restore the Workers Rights Party	LC/Group L	5/09/2007	30/01/2008
Gissell, Barry	State Election 2007	Candidate	Restore the Workers Rights Party	LC/Group L	5/09/2007	30/01/2008
Gissell, Jody	State Election 2007	Candidate	Restore the Workers Rights Party	LC/Group L	5/09/2007	30/01/2008
Johnston, Ian	State Election 2007	Candidate		Hornsby	5/09/2007	30/01/2008
King, Yvonne	State Election 2007	Candidate	Restore the Workers Rights Party	LC/Group L	5/09/2007	30/01/2008
Marr, Todd	State Election 2007	Candidate	Restore the Workers Rights Party	LC/Group L	5/09/2007	30/01/2008
Mockler, Luisa	State Election 2007	Candidate		LC/Group A	5/09/2007	30/01/2008
Parsons, Julie-Ann	State Election 2007	Candidate	Restore the Workers Rights Party	LC/Group L	5/09/2007	30/01/2008
Payne, Geoffrey	2007 State election	Candidate	Socialist Alliance	LC/Group Q	5/09/2007	30/01/2008

Our Operations

CANDIDATE NAME	TYPE OF ELECTION	REFERRAL TYPE	ENDORSED BY	ELECTORAL DISTRICT OR LEGISLATIVE COUNCIL (LC)	DATE OF FINAL REMINDER SENT	DATE FOR APPROVAL OF PROCEEDINGS
Pearson, Tamara	State Election 2007	Candidate	Socialist Alliance	LC/Group Q	5/09/2007	30/01/2008
Reilly, Patrick	State Election 2007	Candidate		Willoughby	5/09/2007	30/01/2008
Sanzari, Frank	State Election 2007	Candidate	Outdoor Recreation Party	LC/Group P	5/09/2007	30/01/2008
Taylor, Leann	State Election 2007	Candidate	Restore the Workers Rights Party	LC/Group L	5/09/2007	30/01/2008
Vescio, Carmelo	State Election 2007	Candidate		Drummoyne	5/09/2007	30/01/2008
Walford, Clifford	State Election 2007	Candidate	Restore the Workers Rights Party	LC/Group L	5/09/2007	30/01/2008
Walford, Frederick	State Election 2007	Candidate	Restore the Workers Rights Party	LC/Group L	5/09/2007	30/01/2008
Walford, Robyn	State Election 2007	Candidate	Restore the Workers Rights Party	LC/Group L	5/09/2007	30/01/2008
Walker, Eric	State Election 2007	Candidate	Christian Democratic Party (Fred Nile Group)	LC/Group K	5/09/2007	30/01/2008
Wilson, Heath	State Election 2007	Candidate	Christian Democratic Party (Fred Nile Group)	Barwon	5/09/2007	30/01/2008
Crossley, Graham	State Election 2007	Group	Horse Riders Party/ Outdoor Recreation Party	Group P	5/09/2007	30/01/2008
Gissell, Barry	State Election 2007	Group	Restore the Workers' Rights Party	Group L	5/09/2007	30/01/2008
-	State Election 2007	Party	Socialist Alliance	-	5/09/2007	30/01/2008
Mitchell, Liam	State Election 2007	Party Agent	Socialist Alliance	-	5/09/2007	30/01/2008

Our Finances



Overview of Finances

The financial statements of the EFA are prepared in accordance with the *Public Finance and Audit Act 1983*. The Auditor-General's Certificate in relation to these statements, together with a detailed budget of the EFA for the financial year, are included in this report.

The budget for the EFA for 2007-08 was \$10.1M. Funds are provided in a transfer payment from the NSWEC. The EFA's budget is detailed below:

EXPENSE BUDGET	2007-08 \$
Operating expenses	-
Employee related	-
Other operating expenses	-
Depreciation and amortisation	-
Other expenses	-
Payments to candidates, groups and parties	8,499,000
Political education	1,646,000
TOTAL EXPENSE BUDGET	10,145,000

Our Finances

The EFA requested additional funding from NSW Treasury because a significant number of parties and candidates lodged their claims for payment in the later part of the lodgement period. The additional funding was provided.

Performance Statement

Name:

Colin Barry

Position and Level:

Electoral Commissioner and
Chairperson, Election Funding Authority
(Public Office Holder Group)

Period in the position:

1 July 2007 to 30 June 2008

By virtue of section 6(a) of the *Election Funding Act 1981* the Electoral Commissioner is appointed Chairperson of the EFA.

The Electoral Commissioner is appointed by the Governor pursuant to section 21A of the *Parliamentary Electorates and Elections Act 1912* and his functions relating to that Act are set out in the Annual Report of the NSWEC.

The EFA administers the public funding of Parliamentary election campaigns and ensures the disclosure of political contributions and electoral expenditure by registered political parties, groups, candidates and political donors.

During the reporting period:

- the EFA prepared and distributed instructional material in relation to the 2008 Local Government elections;
- continued to process the claims for payment arising from the 2007 State election, declarations of political contributions received and electoral expenditure incurred by parties, groups and candidates relating to the 2007 State election and the Local Government by-elections,
- sought and processed political donor declarations from the 2007 State election and two Local Government by-elections;
- administered the Political Education Fund established to provide money to eligible parties for expenditure on political education; and
- appeared before the Parliamentary Select Committee to outline the work of the EFA.

The EFA, under the Chairperson, undertook all these matters together with others outlined in this report.

Audited Financial Statement

Statement by Members of the Election Funding Authority

Pursuant to section 41C(1B) of the *Public Finance and Audit Act 1983*, and in accordance with a resolution of the members of the Election Funding Authority, we declare that in our opinion:

The accompanying financial report exhibits a true and fair view of the financial position of the Election Funding Authority as at 30 June 2008 and transactions for the year then ended.

The report has been prepared in accordance with the provisions of the *Public Finance and Audit Act 1983*, *Public Finance and Audit Regulation 2005* and the Treasurer's directions.

Further, we are not aware of any circumstances which would render any particulars included in the financial report to be misleading or inaccurate.



Colin Barry
Chairperson

19 September 2008



GPO BOX 12
Sydney NSW 2001

INDEPENDENT AUDITOR'S REPORT
ELECTION FUNDING AUTHORITY OF NEW SOUTH WALES

To Members of the New South Wales Parliament

I have audited the accompanying financial report of the Election Funding Authority of New South Wales (the Authority), which comprises the balance sheet as at 30 June 2008, the operating statement, statement of recognised income and expense, cash flow statement, program statement - expenses and revenues, and a summary of compliance with financial directives for the year then ended, and a summary of significant accounting policies and other explanatory notes.

Auditor's Opinion

In my opinion, the financial report:

- presents fairly, in all material respects, the financial position of the Authority as at 30 June 2008, and its financial performance and cash flows for the year then ended in accordance with Australian Accounting Standards (including the Australian Accounting Interpretations)
- is in accordance with section 41B of the Public Finance and Audit Act 1983 (the PF&A Act) and the Public Finance and Audit Regulation 2005.

My opinion should be read in conjunction with the rest of this report.

Authority Head's Responsibility for the Financial Report

The Chairperson is responsible for the preparation and fair presentation of the financial report in accordance with Australian Accounting Standards (including the Australian Accounting Interpretations) and the PF&A Act. This responsibility includes establishing and maintaining internal controls relevant to the preparation and fair presentation of the financial report that is free from material misstatement, whether due to fraud or error; selecting and applying appropriate accounting policies; and making accounting estimates that are reasonable in the circumstances.

Auditor's Responsibility

My responsibility is to express an opinion on the financial report based on my audit. I conducted my audit in accordance with Australian Auditing Standards. These Auditing Standards require that I comply with relevant ethical requirements relating to audit engagements and plan and perform the audit to obtain reasonable assurance whether the financial report is free from material misstatement.

An audit involves performing procedures to obtain audit evidence about the amounts and disclosures in the financial report. The procedures selected depend on the auditor's judgement, including the assessment of the risks of material misstatement of the financial report, whether due to fraud or error. In making those risk assessments, the auditor considers internal controls relevant to the Authority's preparation and fair presentation of the financial report in order to design audit procedures that are appropriate in the circumstances, but not for the purpose of expressing an opinion on the effectiveness of the Authority's internal controls. An audit also includes evaluating the appropriateness of accounting policies used and the reasonableness of accounting estimates made by the Chairperson, as well as evaluating the overall presentation of the financial report.

I believe that the audit evidence I have obtained is sufficient and appropriate to provide a basis for my audit opinion.

My opinion does not provide assurance:

- about the future viability of the Authority,
- that it has carried out its activities effectively, efficiently and economically,
- about the effectiveness of its internal controls, or
- on the assumptions used in formulating the budget figures disclosed in the financial report.

Independence

In conducting this audit, the Audit Office of New South Wales has complied with the independence requirements of the Australian Auditing Standards and other relevant ethical requirements. The FWBA Act further promotes independence by:

- providing that only Parliament, and not the executive government, can remove an Auditor-General, and
- mandating the Auditor-General as auditor of public sector agencies but precluding the provision of non-audit services, thus ensuring the Auditor-General and the Audit Office of New South Wales are not compromised in their role by the possibility of losing clients or income.



Peter Achtenstraat
Auditor-General

22 September 2008
SYDNEY

Operating Statement for the year ended 30 June 2008

	Notes	Actual 2008 \$	Actual 2007 \$
REVENUE			
Consolidated Fund: (Specially appropriated under the <i>Election Funding and Disclosures Act 1981</i>)			
Payments to candidates, groups and parties		8,406,540	2,708,222
Political Education Fund		1,646,130	1,662,626
TOTAL REVENUE		10,052,670	4,370,848
EXPENSES			
State General Election payments	2(a)	8,406,540	2,708,222
Payments to political parties from Political Education Fund	2(b)	1,646,130	1,662,626
TOTAL EXPENSES		10,052,670	4,370,848
SURPLUS / (DEFICIT) FOR THE YEAR		-	-

The accompanying notes form part of these financial statements

*Statement of Recognised Income and Expense
for the year ended 30 June 2008*

	Notes	Actual 2008 \$	Actual 2007 \$
TOTAL INCOME AND EXPENSES RECOGNISED DIRECTLY IN EQUITY		-	-
Surplus / (Deficit) for the Year		-	-
TOTAL INCOME AND EXPENSE RECOGNISED FOR THE YEAR		-	-

The accompanying notes form part of these financial statements

*Balance Sheet
for the year ended 30 June 2008*

	Notes	Actual 2008 \$	Actual 2007 \$
Current Assets			
Total Current Assets		-	-
Total Assets		-	-
Current Liabilities			
Total Current Liabilities		-	-
Total Liabilities		-	-
Net Assets Equity		-	-
Total Equity		-	-

The accompanying notes form part of these financial statements

*Cash Flow Statement
for the year ended 30 June 2008*

	Notes	Actual 2008 \$	Actual 2007 \$
CASH FLOWS FROM OPERATING ACTIVITIES			
Payments			
Payments to candidates, groups and parties		(8,406,540)	(2,708,222)
Political Education Fund		(1,646,130)	(1,662,626)
Cash Flows from Government			
Consolidated Fund receipts via NSW Electoral Commission		10,052,670	4,370,848
Cash Flows from Operating Activities	5	<hr/> - <hr/>	<hr/> - <hr/>
Net Change in cash from Operating Activities		-	-
Opening cash and cash equivalents		-	-
Closing cash and cash equivalents		<hr/> - <hr/>	<hr/> - <hr/>

Note for Financial Statements for the year ended 30 June 2008

I. Summary of Significant Accounting Policies

(a) Reporting Entity

The Election Funding Authority of New South Wales (EFA) is a NSW statutory authority. The EFA is a not-for-profit entity (as profit is not its principal objective) and it has no cash generating units. The reporting entity is consolidated as part of the NSW Total State Sector Accounts.

The *Election Funding and Disclosures Act 1981* provides for the public funding of Parliamentary election campaigns and for the Political Education Fund. The Act, formerly known as the *Election Funding Act 1981*, was assented to on 30 June 2008 and commenced on 10 July 2008. The amendment introduced a number of changes, including six monthly disclosures, a uniform disclosure threshold of \$1,000 for donations and disclosure of loans and party affiliation fees.

Payments from the Central Fund are to eligible candidates, groups and parties at a State general election contesting election to the Legislative Council of New South Wales. Payments from the Constituency Fund are to eligible candidates and parties at a State general election contesting election to the Legislative Assembly of New South Wales. Payments from the by-election Constituency Fund are to eligible candidates and parties at a by-election contesting election to the Legislative Assembly of New South Wales.

As amended, the Act provides for the establishment of a Political Education Fund from which eligible registered parties are entitled to receive annual payments for the purposes of political education.

This financial report for the year ended 30 June 2008 has been authorised for issue by the Chairperson on 19 September 2008.

(b) *Basis of Preparation*

The EFA's financial report is a general purpose financial report which has been prepared in accordance with:

- applicable Australian Accounting Standards (which include Australian Accounting Interpretations) and
- the requirements of the *Public Finance and Audit Act 1983* and Regulation.

Judgements, key assumptions and estimations management has made are disclosed in the relevant notes to the financial report.

All amounts are rounded to the nearest dollar and are expressed in Australian currency.

(c) *Statement of Compliance*

The financial statements and notes comply with Australian Accounting Standards, which include Australian Accounting Interpretations.

(d) *Income Recognition*

Income is measured at the fair value of the consideration or contribution received or receivable. Additional comments regarding the accounting policies for the recognition of income are discussed below.

(i) *Parliamentary appropriations and contributions*

Consolidated fund appropriations under the *Election Funding and Disclosures Act 1981* are received by way of transfer payment from the NSW Electoral Commission.

Notes to the Financial Statements

(e) Expense Recognition

The EFA makes payments from the Constituency Fund and Central Fund for valid claims made by candidates, groups and political parties. An expense is not recognised until:

1. an entitlement exists under legislation;
2. the candidate, party or group has supplied sufficient documentation supporting the claim and this documentation includes invoices incurred for electoral expenditure to substantiate the level of claim; and
3. the EFA has validated the invoices to determine if they meet the legislative requirement for payment.

Whilst a maximum entitlement exists under legislation, the actual payment depends on the value of invoices submitted by candidates, parties or groups.

A corresponding revenue item is recognised as the cost of claims is recovered from the NSW Electoral Commission.

All transactions are conducted through the NSW Electoral Commission's accounting framework. Within this framework, employee related expenses of \$440,000 (\$442,000 in 2007), other operating expenses of \$101,000 (\$105,000 in 2007) and depreciation and amortisation of \$74,000 (\$58,000 in 2007) are recognised as attributable to the EFA.

(f) Assets Recognition

The Authority has no employees, nor does it own or control any non-current assets.

(g) Comparative information

Except when an Australian Accounting Standard permits or requires otherwise, comparative information is disclosed in respect of the previous period for all amounts reported in the financial statements.

Notes to the Financial Statements

(h) New Australian Accounting Standards issued but not effective

The following new Accounting Standards have not been applied and are not yet effective as mandated by the Treasurer. The possible impact of the Standards in the period of initial application is not able to be reliably measured.

- AASB 3 (March 2008), AASB 127 and AASB 2008-3 regarding business combinations;
- AASB 8 and AASB 2007-3 regarding operating segments;
- AASB 101 (Sept 2007) and AASB 2007-8 regarding presentation of financial statements;
- AASB 123 (June 2007) and AASB 2007-6 regarding borrowing costs;
- AASB 1004 (Dec 2007) regarding contributions;
- AASB 1049 (Oct 2007) regarding the whole of government and general government sector financial reporting;
- AASB 1050 (Dec 2007) regarding administered items;
- AASB 1051 (Dec 2007) regarding land under roads;
- AASB 1052 (Dec 2007) regarding disaggregated disclosures;
- AASB 2007-9 regarding amendments arising from the review of AASs 27, 29 and 31;
- AASB 2008-1 regarding share based payments;
- AASB 2008-2 regarding puttable financial instruments;
- Interpretation 4 (Feb 2007) regarding determining whether an arrangement contains a lease;
- Interpretation 12 and AASB 2007-2 regarding service concession arrangements;
- Interpretation 13 on customer loyalty programmes;
- Interpretation 14 regarding the limit on a defined benefit asset;
- Interpretation 129 (Feb 2007) regarding service concession disclosures;
- Interpretation 1038 (Dec 2007) regarding contributions by owners.

2. Expense

(a) State General Election Payments

	2008	2007
	\$	\$
Central Fund:		
Payments to Political Parties *	4,887,761	2,634,174
Constituency Fund:		
Payments to Candidates	3,518,779	74,048
Total State General Election Payments	8,406,540	2,708,222

* Payments to Political Parties in the 2007 and 2008 financial years are in relation to the 2007 State General Election.

\$

Payments to Political Parties

Australian Labor Party (NSW Branch)	3,426,979
Liberal Party of Australia New South Wales Division	1,997,405
National Party of Australia - NSW	998,702
The Greens	466,950
Christian Democratic Party (Fred Nile Group)	387,203
The Shooters Party	244,696
Total Payments to Political Parties in relation to the 2007 State General Election	7,521,935

(b) *Payments to political parties from Political Education Fund*

	2008	2007
	\$	\$
Australian Labor Party (NSW Branch)	692,376	688,618
Liberal Party of Australia New South Wales Division	530,630	472,444
National Party of Australia - NSW	198,012	184,002
The Greens	176,402	157,685
Christian Democratic Party (Fred Nile Group)	48,710	32,986
Country Labor Party	-	126,891
Total Payments to Political Parties from Political Education Fund	1,646,130	1,662,626

3. CONTINGENT ASSETS AND LIABILITIES

There are no known contingent assets or liabilities at balance date (\$NIL at 30 June 2007).

4. COMMITMENTS

The Authority has no contractual commitments, nor any operating or finance leases (\$NIL at 30 June 2007).

5. RECONCILIATION OF NET CASH PROVIDED BY OPERATING ACTIVITIES TO OPERATING SURPLUS

	2008	2007
	\$	\$
Operating surplus/(deficit)	-	-
Net Cash From Operating Activities	-	-

6. AFTER BALANCE DATE EVENTS

There are no events subsequent to balance date which affect the financial report.

End of audited financial statements

Appendices

Appendix 1	Research and Development
Appendix 2	Human Resources
Appendix 3	Consultants
Appendix 4	Equal Employment Opportunity
Appendix 5	Disability Plans
Appendix 6	Land Disposal
Appendix 7	Promotion and Consumer Response
Appendix 8	Risk Management and Insurance Activities
Appendix 9	Controlled Entities
Appendix 10	Ethnic Affairs Priority Statement
Appendix 11	NSW Government Action Plan for Women
Appendix 12	Occupational Health and Safety
Appendix 13	Waste Management/Energy Management
Appendix 14	Organisational Chart
Appendix 15	Election Funding Reports
Appendix 16	Senior Executive Service (SES) Profile
Appendix 17	Committees/Special Officers
Appendix 18	Freedom of Information Statement of Affairs
Appendix 19	Overseas Travel
Appendix 20	Annual Report Cost and Number Printed
Appendix 21	Credit Card Certification
Appendix 22	Privacy Management Plan
Appendix 23	Register of Official Agents
Appendix 24	Entitlements for the Legislative Council Election
Appendix 25	Entitlements for the Legislative Assembly Election
Appendix 26	List of donors the Authority referred to the Crown Solicitor for failing to lodge a declaration by the due date of 30 August 2007

Appendices

Appendix 1 Research and Development

The EFA did not undertake any new research or any major development programmes during the reporting year.

Appendix 2 Human Resources

Until the Bill was assented on Monday 30 June 2008, under section 22 of the Act, the EFA was unable to employ staff. The role of Secretary to the EFA is not a statutory position and is undertaken by a permanent staff member of the NSWEC.

The EFA, in addition to the Secretary, has two full-time staff members to satisfy administrative and legislative requirements.

Although staff members work on matters relevant to the EFA, they are employed by the NSWEC. Wages, salaries and allowances are included in the annual report of the NSWEC. Key components of human resource management and industrial relations policies and practices are satisfied indirectly through the resource management planning and reporting activities of the NSWEC.

Appendix 3 Consultants

The EFA did not make use of any consultancy services in the reporting period.

Appendix 4 Equal Employment Opportunity

While the EFA has no full-time permanent public sector positions, a principle of equity and fairness in the carriage of its activities is fundamental to maintaining stakeholder confidence.

Appendix 5 Disability Plans

Details of the Disability Strategic Plan applicable to the EFA are set out in the Annual Report of the NSWEC.

Appendix 6 Land Disposal

The EFA does not own, or have an interest in any realty.

Appendix 7 Promotion and Consumer Response

The EFA publishes instructional guide books for use by registered political parties, groups and candidates contesting State and Local Government elections. The publications explain their rights and responsibilities under the Act. They contain examples showing the correct manner for completion of documents to be lodged with the EFA. The instructional guides are available on the EFA's website, www.efa.nsw.gov.au

Appendices

The EFA has further developed the website during the reporting year. Recent developments have enhanced the information available to registered political parties, candidates, political donors and the NSW electors for the 2008 Local Government elections.

The EFA provides its clients with a range of information channels including telephone, website, email, facsimile, media, telephone typewriter and interpreting services.

Appendix 8 Risk Management and Insurance Activities

Details of risk management and insurance activities are shown in the Annual Report of the NSWEC.

Appendix 9 Controlled Entities

The EFA has no controlled entities.

Appendix 10 Ethnic Affairs Priority Statement

Details of the Ethnic Affairs Policy Statement are set out in the Annual Report of the NSWEC.

Appendix 11 NSW Government Action Plan for Women

While the EFA has no full-time permanent public sector positions, a principle of equity and fairness in the carriage of its activities is fundamental to maintaining stakeholder confidence, regardless of gender.

Appendix 12 Occupational Health and Safety

During the year there were no reported safety incidents.

The OH&S system incorporating the Return to Work Program is managed by the Human Resources division of the NSWEC.

Appendix 13 Waste Management/ Energy Management

The EFA recognises that administrative practices particularly associated with disclosure, reporting and public inspection obligations should be considered and reviewed, with the objective of avoiding paper product waste, increasing the purchase of recycled product content and increasing resource recovery.

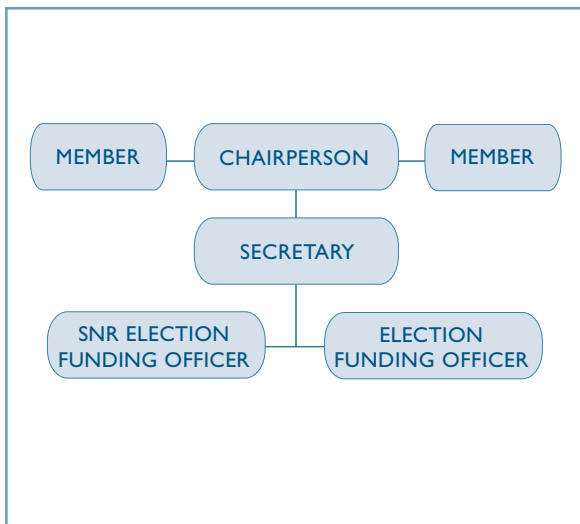
In the key area of paper products, the development of the EFA's website has provided on-line inspection of registers, entitlement to funding, claims for payment

Appendices

and income and expenditure information. The EFA intends to expand the website further to include electronic submission of returns and a comprehensive search facility to view scanned claims for payment and declarations of political contributions received and electoral expenditure incurred.

The claims for payment and declarations are currently a paper-based activity, with documents only available for inspection by visiting the NSWEC. Copies of all declarations relating to Local Government elections and by-elections are also made available through council offices.

Appendix 14 Organisational Chart



Appendix 15 Election Funding Reports

Election funding reports containing a summary of the information on declarations are available on the EFA website.

Appendix 16 Senior Executive Service (SES) Profile

There are no SES positions in the EFA.

Appendix 17 Committees/Special Officers

Not applicable.

Appendix 18 Freedom of Information Statement of Affairs

The EFA has both a Statement of Affairs and a Summary of Affairs which are available on request through the NSWEC.

In the reporting year no FOI applications were received.

Appendix 19 Overseas Travel

No overseas visitors were received by the EFA and no official overseas travel undertaken in 2007/2008 by EFA members.

Appendices

Appendix 20 Annual Report Cost and Number Printed

Total external costs incurred were \$5,984 (incl GST) for printing. Editorial and design were undertaken by the EFA.

Appendix 21 Credit Card Certification

The EFA does not hold any credit cards.

Appendix 22 Privacy Management Plan

The Act requires that the EFA maintain a Register of Candidates, a Register of Official Agents and a Register of Party Agents. These registers include certain personal particulars about candidates and agents.

Documents lodged with the EFA must also be made available for public inspection in relation to claims for payment, declarations of political contributions received and electoral expenditure incurred, together with any supporting documents, and political donor declarations.

The personal information is not collected, used, disclosed or accessed for purposes other than provided for in privacy legislation or the Act.

The protection of personal information and the

privacy of individuals are provided for in the NSWEC's privacy management plan developed under the *Privacy and Personal Information Protection Act* 1998.

Appendix 23 Register of Official Agents

Register of Official Agents Election:

2007 NSW State General Election

Election Day: Saturday 24 March 2007

Agent Name: Bassi, Raul

Occupation: Driver

Official Agent for the following candidates and/or groups:

Candidates:	Electoral District or Legislative Council (LC)
Habib, Mamdouh	Auburn

Appendix 23 Register of Official Agents

Agent Name: Bentley, Peter

Occupation: State Organiser

Official Agent for the following candidates and/or groups:

Candidates:	Electoral District or Legislative Council (LC)
Alchin, Tegan	LC
Allen, Robert	LC
Amery, Richard	Mount Druitt
Andrews, Marie	Gosford
Aquilina, John	Riverstone
Arneman, James	Port Stephens
Ashton, Alan	East Hills
Beamer, Diane	Mulgoa
Beattie, Linda	Willoughby
Black, Peter	Murray-Darling
Borger, David	Granville
Boydell, Patricia	Pittwater
Brown, Matthew	Kiama
Burney, Linda	Canterbury
Burton, Cherie	Kogarah
Calvert, Barry	LC
Campbell, David	Keira
Campbell, Nicole	Epping
Cavanagh, Brendan	LC
Chavez, Patricio	Wakehurst
Chinnock, Wilma	Bega
Clancy, Lisa	Myall Lakes
Collier, Barry	Miranda
Constance, Paul	Cronulla
Coombs, Robert	Swansea

Corrigan, Geoffrey	Camden
Costa, Phillip	Wollondilly
Daley, Michael	Maroubra
D'Amore, Angela	Drummoyne
Della Bosca, John	LC
Dillon, Meryl	Barwon
Doherty, Robert	LC
Doriean, Melanie	Ballina
Duffy, Kevin	Orange
Elliott-Rudder, Glenn	Wagga Wagga
Fazio, Amanda	LC
Firth, Verity	Balmain
Forde, Jessica	Burrinjuck
Gadiel, Tanya	Parramatta
Gartrell, Glenda	LC
Gibson, Paul	Blacktown
Greene, Kevin	Oatley
Harris, David	Wyong
Hatzistergos, John	LC
Hay, Anthony	Baulkham Hills
Hay, Noreen	Wollongong
Hayes, Monica	Port Macquarie
Hickey, Kerry	Cessnock
Holmes, Stuart	Oxley
Hornery, Sonia	Wallsend
Hough, Adrian	Dubbo
Hunter, Jeffrey	Lake Macquarie
Iemma, Morris	Lakemba
James, Pauline	LC
Judge, Dianne	Strathfield
Keating, Anthony	LC

Appendix 23 Register of Official Agents

Keneally, Kristina	Heffron	Paluzzano, Karyn	Penrith
Kennedy, David	Coffs Harbour	Parker, Robert	Goulburn
Khoshaba, Ninos	Smithfield	Pearce, Daniel	Manly
Kidd, Michael	Murrumbidgee	Perry, Barbara	Auburn
Kingsley, Mark	Clarence	Rahill, Alison	Vaucluse
Koperberg, Philip	Blue Mountains	Rees, Nathan	Toongabbie
Lanyon, Peter	Lismore	Ryan, Christopher	Albury
Lecky, Jennifer	Upper Hunter	Sartor, Frank	Rockdale
Lynch, Paul	Liverpool	Scott, Linda	Sydney
Macarthur-King, Adrian	Ku-Ring-Gai	Shearan, Allan	Londonderry
Macdonald, Ian	LC	Stewart, Anthony	Bankstown
Martin, Gerard	Bathurst	Tebbutt, Carmel	Marrickville
McBride, Grant	The Entrance	Terenzini, Francesco	Maitland
McCosker, Alicia	Hawkesbury	Tripodi, Joseph	Fairfield
McDonald, Andrew	Macquarie Fields	Tsang, Henry	LC
McHugh, Denise	Tamworth	Usher, Phillip	Northern Tablelands
McIntosh, Janelle	Hornsby	Veitch, Michael	LC
McKay, Jodi	Newcastle	Voltz, Lynda	LC
McLeay, Paul	Heathcote	Watkins, John	Ryde
McLeod, Douglas	Davidson	West, Graham	Campbelltown
McMahon, Lylea	Shellharbour	Westwood, Helen	LC
Meagher, Reba	Cabramatta	Whan, Steven	Monaro
Megarrity, Alison	Menai	Winton, Tabitha	North Shore
Miran, Michelle	South Coast	Woods, Sandra	LC
Morris, Matthew	Charlestown	Groups:	Labor
Mustafa, Alexander	Castle Hill		
Newell, Neville	Tweed		
Obeid, Edward	LC		
O'Donnell, Gabrielle	Lane Cove		
O'Neill, Deborah	Terrigal		

Appendix 23 Register of Official Agents

Agent Name: Breen, Peter
Occupation: Member of Parliament

Official Agent for the following candidates and/or groups:

Candidates:	Electoral District or Legislative Council (LC)
Alic, Dzevdet	LC
Breen, Maree	LC
Byrne, Catherine	LC
Davis, Michael	LC
Mamone, Angela	LC
Murphy, Valery	LC
Nikolovski, Miralem	LC
Palmer, Claudette	LC
Panovska, Suzana	LC
Peak, Erin	LC
Poposki, Ljupco	LC
Thomas, Diane	LC
Velevski, Bosko	LC
Warby, Janette	LC

Agent Name: Briggs, Scott
Occupation: Deputy Director

Official Agent for the following candidates and/or groups:

Candidates:	Electoral District or Legislative Council (LC)
Annesley, Graham	Miranda
Aplin, Gregory	Albury
Babakhan, Martin	Newcastle
Baird, Michael	Manly
Bassett, Bart	Londonderry
Baumann, Craig	Port Stephens
Belleli, Robert	Maroubra
Berejiklian, Gladys	Willoughby
Bilic, George	Mount Druitt
Brookes, Glenn	East Hills
Carney, William	Strathfield
Chedid, John	Parramatta
Chijoff, Karen	Mulgoa
Conna, James	Fairfield
Conolly, Kevin	Riverstone
Constance, Andrew	Bega
Copas, Stacey	Campbelltown
Debnam, Peter	Vaucluse
Edwards, Garry	Swansea
El Khouri, Peter	Kogarah
Evans, Lee	Heathcote
Flegg, Jonathan	Coogee
Fowler, Colin	Wollongong

Appendix 23 Register of Official Agents

Fraser, Nola	Macquarie Fields	Patterson, Christopher	Camden
Geoghegan, Robert	Maitland	Paxinos, Kenneth	Lake Macquarie
Gestakovska, Lili	Rockdale	Pierides, George	Auburn
Goward, Prudence	Goulburn	Richardson, Michael	Castle Hill
Gray, Roger	Oatley	Roberts, Anthony	Lane Cove
Hancock, Shelley	South Coast	Rohan, Andrew	Smithfield
Hartcher, Christopher	Terrigal	Sarkis, Eddy	Granville
Hazzard, Bradley	Wakehurst	Shmigel, Peter	Balmain
Herington, James	Wallsend	Simpson, Steven	Menai
Hitchen, Patricia	Penrith	Skinner, Jillian	North Shore
Holstein, Christopher	Gosford	Smith, Gregory	Epping
Hopwood, Judith	Hornsby	Smith, Victor	Cabramatta
Kerr, Malcolm	Cronulla	Spencer, Mark	Blacktown
Lloyd, Kirsty	Toongabbie	Stokes, Robert	Pittwater
Long, Gregory	Drummoyne	Sudmalis, Ann	Kiama
Maguire, Daryl	Wagga Wagga	Tagg, Victor	Ryde
Majewski, Mark	Bankstown	Walker, Philip	The Entrance
Mandla, Edward	Sydney	Williams, Raymond	Hawkesbury
Mannoun, Ned	Liverpool	Wright, Stuart	Shellharbour
Mansour, Morris	Lakemba	Groups:	Liberal / Nationals
Mansour, Philip	Canterbury		
Mansour, Ramzy	Marrickville		
Merton, Wayne	Baulkham Hills		
Morton, Ben	Wyong		
Moulds, Albert	Keira		
Nash, Scott	Heffron		
O'Dea, Jonothan	Davidson		
O'Farrell, Barry	Ku-Ring-Gai		
Paag, Michael	Blue Mountains		
Paterson, Lindsay	Charlestown		

Appendix 23 Register of Official Agents

Agent Name: Brown, Robert
Occupation: Member of Legislative Council

Official Agent for the following candidates and/or groups:

Candidates:	Electoral District or Legislative Council (LC)
Alexeef, Teresa	LC
Ambis, Alois	LC
Bond, Jeffrey	LC
Borsak, Robert	LC
Bourke, Robyn	LC
Cook, David	LC
Coombs, Ashley	LC
Franich, Rodney	LC
Howden, John	LC
Mainstone, Stephen	LC
Mallen, Andrew	LC
Maraldo, Joan	LC
Muirhead, James	LC
Newbury, Alison	LC
Newbury, Mitchell	LC
Shade, Barry	LC
Shaw, Robert	LC
Smith, Roy	LC
Thornley, James	LC
Groups:	The Shooters Party

Agent Name: Consandine, Peter
Occupation: Political Operative

Official Agent for the following candidates and/or groups:

Groups: Group H

Agent Name: Harvey, John
Occupation: Dental Surgeon

Official Agent for the following candidates and/or groups:

Groups: Group F

Agent Name: Henley, Matthew
Occupation: Accountant

Official Agent for the following candidates and/or groups:

Candidates:	Electoral District or Legislative Council (LC)
Carbury, Richard	LC

Appendix 23 Register of Official Agents

Agent Name: Hulsing, Peter

Occupation: Administrator

Official Agent for the following candidates and/or groups:

Candidates:	Electoral District or Legislative Council (LC)
Blackmore, Peter	Maitland

Agent Name: Hyland, Tulay

Occupation: Casual Teacher

Official Agent for the following candidates and/or groups:

Groups:	Group D
---------	---------

Agent Name: Jeffries, Alexander

Occupation: Manager Motel

Official Agent for the following candidates and/or groups:

Candidates:	Electoral District or Legislative Council (LC)
Darling, Alexander	Shellharbour

Agent Name: Lam, Le

Occupation: Administration Manager

Official Agent for the following candidates and/or groups:

Candidates:	Electoral District or Legislative Council (LC)
Au, Jack	Auburn
Ayres, Anthony	Maroubra
Cai, Benjamin	Strathfield
Chen, Grace	Marrickville
Chin, Kevin	Ryde
Choyce, Imanuel	Sydney
Ho, Marcus	Kogarah
Ho, William	Lane Cove
Huseyin, Ozlem	Drummoyne
Jiang, Bill	Blacktown
Kam, Cherie	Willoughby
Li, Yan	Baulkham Hills
Lin, Sheng	Castle Hill
Liu, Nancy	Oatley
Moussa, Omar	Lakemba
Phu, Minh	Smithfield
Ren, Chuan	Toongabbie
Ren, Jing	Canterbury
Salah, Shawky	Bankstown
Su, Andrew	Cabramatta
Su, Lily	Granville
Sun, Michael	Ku-Ring-Gai
Tai, Kek	Liverpool

Appendix 23 Register of Official Agents

Tam, Pak	Epping
Truong, Andy	East Hills
Wang, Gang	Rockdale
Wong, Ida	Parramatta
Wu, Yuan	Coogee
Yuen, John	Fairfield
Zhou, Fei	Hornsby

Agent Name: Murphy, Linda

Occupation: Self Employed

Official Agent for the following candidates and/or groups:

Candidates:	Electoral District or Legislative Council (LC)
Fraser, Dawn	LC

Agent Name: Orphin, Phillip

Occupation: Accountant

Official Agent for the following candidates and/or groups:

Candidates:	Electoral District or Legislative Council (LC)
Anderson, Kevin	Tamworth
Cansdell, Stephen	Clarence
Fraser, Andrew	Coffs Harbour
George, Thomas	Lismore
Hodgkinson, Katrina	Burrinjuck

Hollingshed, Trevor	Cessnock
Humphries, Kevin	Barwon
Kelly, Phillip	Northern Tablelands
Madew, David	Monaro
Matthews, Gregory	Dubbo
Page, Donald	Ballina
Piccoli, Adrian	Murrumbidgee
Provest, Geoffrey	Tweed
Souris, George	Upper Hunter
Stoner, Andrew	Oxley
Turner, John	Myall Lakes
Turner, Russell	Orange
William, Leslie	Port Macquarie
Williams, John	Murray-Darling
Williams, Susan	Bathurst

Agent Name: Perrin, Phillip

Occupation: Retired

Official Agent for the following candidates and/or groups:

Candidates:	Electoral District or Legislative Council (LC)
Petch, Ivan	Ryde

Appendix 23 Register of Official Agents

Agent Name: Powell, Owen

Occupation: Retired

Official Agent for the following candidates and/or groups:

Candidates:	Electoral District or
	Legislative Council (LC)
Coghlan, Laurence	Swansea

Agent Name: Pratt, David

Occupation: Home Duties

Official Agent for the following candidates and/or groups:

Groups:	Group M
---------	---------

Agent Name: Sims, William

Occupation: Retired

Official Agent for the following candidates and/or groups:

Candidates:	Electoral District or
	Legislative Council (LC)
Fardell, Dawn	Dubbo

Agent Name: Tate, Catherine

Occupation: Teacher

Official Agent for the following candidates and/or groups:

Candidates:	Electoral District or
	Legislative Council (LC)
Tate, John	Newcastle

Agent Name: Tracey, Paul

Occupation: Teacher

Official Agent for the following candidates and/or groups:

Candidates:	Electoral District or
	Legislative Council (LC)
Pearce, Paul	Coogee

Appendix 23 Register of Official Agents

Agent Name: Woodger, Edwin

Occupation: Accountant

Official Agent for the following candidates and/or groups:

Candidates:	Electoral District or Legislative Council (LC)
Abrahams, Barbara	Swansea
Atkins, Ronald	Riverstone
Bateman, James	LC
Bateman, Patricia	LC
Bergman, Michael	Epping
Bowen, Ross	Camden
Boyd, Flora	Ballina
Butler, Lindsay	LC
Byrne, Kevin	Pittwater
Campbell, John	LC
Carey, Norman	Toongabbie
Chehoff, Michael	Wollongong
Clarke, Noel	LC
Corrigan, Frank	Macquarie Fields
Cronin, Alan	Canterbury
Dakin, Geoffrey	Mulgoa
Dale, Ross	East Hills
Dedman, Ross	Londonderry
Dobson, Rex	South Coast
Dowman, Peter	Granville
Dwight, Robert	Blue Mountains
Evic, John	Coffs Harbour
Feinbier, Samantha	Miranda

Feinbier, Warren	Cronulla
Foley, Mervyn	Castle Hill
Gardyne, Ronald	Oxley
Gelling, Ian	Liverpool
Girvan, Robert	LC
Gruener, Edeltraud	Drummoyne
Gruener, Fuergen	Ryde
Hamilton, Neil	Manly
Hayes, Kay	Terrigal
Heinrichs, Donald	LC
Heinrichs, Fiona	LC
Higgins, Paul	LC
Hodge, Leonard	Lake Macquarie
Hodge, Philip	Bega
James, Peter	LC
Kelly, Helen	Heathcote
King, Ian	Tweed
Kitson, David	Davidson
Mansfield, John	Parramatta
Marsh, Colin	Campbelltown
Mavin, Leslie	Penrith
McGrath, John	Oatley
McNaught, Donald	Blacktown
Moody, Thomas	Wakehurst
Moulds, Robert	Gosford
Newton, John	Mount Druitt
Overend, Maria	The Entrance
Parsons, Norman	Tamworth
Patakfalvy, Maria	Keira
Patakfalvy, Tibor	Shellharbour

Appendix 23 Register of Official Agents

Perry, Grant	Myall Lakes
Pini, Sandro	Smithfield
Piol, Gregory	Baulkham Hills
Pringle, Gregg	Hawkesbury
Reid, Frank	Port Macquarie
Rogers, Kim	Bankstown
Shepherd, Gregory	Hornsby
Sherwood, Eddington	LC
Spark, Richard	Wyong
Spragg, Kenneth	LC
Vanderwel, Johannes	Fairfield
Wood, David	Port Stephens
Woodger, Edwin	LC
Woodger, Madeline	LC
Groups:	Australians Against Further Immigration

Appendix 24 Entitlements for the Legislative Council Election

PARTY	PERCENTAGE OF PRIMARY VOTES	ENTITLEMENT \$	AMOUNT PAID \$
Australian Democrats (NSW Division)	1.78	-	-
Australian Labor Party (NSW Branch)	39.14	3,426,979	3,426,979
Australians Against Further Immigration	1.64	-	-
Christian Democratic Party (Fred Nile Group)	4.42	387,204	387,204
Horse Riders Party	0.57	-	-
Outdoor Recreation Party			
Liberal Party of Australia New South Wales Division	34.22	2,996,107	1,997,405
National Party of Australia - NSW			998,702
Peter Breen - Human Rights Party	0.44	-	-
Restore the Workers Rights Party	0.92	-	-
Save Our Suburbs	0.31	-	-
Socialist Alliance	0.40	-	-
The Fishing Party	1.53	-	-
The Greens	9.12	798,434	466,950
The Shooters Party	2.79	244,696	244,696
Unity Party	1.21	-	-
Independent Group			
A	0.68	-	-
D	0.01	-	-
F	0.50	-	-
H	0.08	-	-
M	0.09	-	-
Ungrouped Candidate			
BODLAY, Jordie	0.00	-	-
CARBURY, Richard	0.00	-	-
FRASER, Dawn	0.12	-	-
LOVETT, Ryan	0.00	-	-
MACDONALD, Alasdair	0.00	-	-
NUNEZ, Jose	0.00	-	-
ROFE, David	0.01	-	-
Undistributed Funds \$		2	

Appendix 25 Entitlements for the Legislative Assembly Election

CANDIDATES BY ELECTORAL DISTRICT	PARTY AFFILIATION	PERCENTAGE OF PRIMARY VOTES	ENTITLEMENT \$	AMOUNT PAID \$
ALBURY				
APLIN, Greg	LIBERAL	65.34	21,111	20,624.37
RYAN, Chris	COUNTRY LABOR	27.39	11,565	11,565.00
SOBEY, Chris	THE GREENS	7.27	3,070	
Undistributed Funds \$			6,476	
AUBURN				
AU, Jack	UNITY PARTY	9.59	4,588	4,588.00
HABIB, Mamdouh	-	3.85	-	-
IHRAM, Silma	AUSTRALIAN DEMOCRATS	2.70	-	-
LOTFIZADEH, Allan	CHRISTIAN DEMOCRATIC PARTY	3.92	-	-
MICHAELS, Malikeh	THE GREENS	4.02	1,924	
PERRY, Barbara	LABOR	60.29	21,111	21,111.00
PIERIDES, George	LIBERAL	14.31	6,849	6,849.00
VINNICOMBE, Bob	-	1.33	-	-
Undistributed Funds \$			7,750	
BALLINA				
BAILEY, John	THE GREENS	19.44	8,472	8,472.00
BOYD, Flora	AUSTRALIANS AGAINST FURTHER IMMIGRATION	1.36	-	-
DORIEAN, Melanie	LABOR	23.07	10,055	10,055.00
PAGE, Don	NATIONALS	54.36	21,111	21,111.00
SMITH, Ben	AUSTRALIAN DEMOCRATS	1.77	-	-
Undistributed Funds \$			2,584	
BALMAIN				
FIRTH, Verity	LABOR	39.22	17,900	17,900
HYDE, Jane	-	2.34	-	-
OKULICZ, Edward	AUSTRALIAN DEMOCRATS	2.09	-	-
PORTEOUS, Rochelle	THE GREENS	29.53	13,479	13,479.00
SHMIGEL, Peter	LIBERAL	23.75	10,841	10,841.00
WARD, Jane	-	3.07	-	-
Undistributed Funds \$			2	

Appendix 25 Entitlements for the Legislative Assembly Election

CANDIDATES BY ELECTORAL DISTRICT	PARTY AFFILIATION	PERCENTAGE OF PRIMARY VOTES	ENTITLEMENT \$	AMOUNT PAID \$
BANKSTOWN				
ABDULLA, Zarif	CHRISTIAN DEMOCRATIC PARTY	4.75	2,125	2,125.00
BROOKS, Simon	THE GREENS	5.36	2,399	2,399.00
MAJEWSKI, Mark	LIBERAL	19.95	8,936	8,936.00
ROGERS, Lynette	AUSTRALIANS AGAINST FURTHER IMMIGRATION	2.11	-	-
SALAH, Shawky	UNITY PARTY	3.61	-	-
STEWART, Tony	LABOR	64.22	21,111	21,111.00
Undistributed Funds \$			7,651	
BARWON				
BODELL, Darren	THE GREENS	2.97	-	-
DILLON, Meryl	COUNTRY LABOR	19.47	8,839	8,839.00
HORAN, Tim	-	29.23	13,270	13,270.00
HUMPHRIES, Kevin	NATIONALS	44.30	20,111	20,111.00
PAUL, Les	-	1.75	-	-
WILSON, Heath	CHRISTIAN DEMOCRATIC PARTY	2.28	-	-
Undistributed Funds \$			2	
BATHURST				
LAWRENCE, Sebria	THE GREENS	4.84	2,043	421.80
MARTIN, Gerard	COUNTRY LABOR	53.43	21,111	21,111.00
THOMPSON, Ray	-	10.98	4,634	3,068.32
WILLIAMS, Susan	NATIONALS	30.76	12,986	12,986.00
Undistributed Funds \$			1,448	
BAULKHAM HILLS				
GOH, Godwin	CHRISTIAN DEMOCRATIC PARTY	4.84	2,152	1,234.00
HAY, Tony	LABOR	31.03	13,808	13,808.00
LI, Yan	UNITY PARTY	2.78	-	-
MERTON, Wayne	LIBERAL	51.54	21,111	21,111.00
PIOL, Gregory	AUSTRALIANS AGAINST FURTHER IMMIGRATION	2.33	-	-
RODOWICZ, Mark	THE GREENS	7.48	3,327	3,327.00
Undistributed Funds \$			1,824	

Appendix 25 Entitlements for the Legislative Assembly Election

CANDIDATES BY ELECTORAL DISTRICT	PARTY AFFILIATION	PERCENTAGE OF PRIMARY VOTES	ENTITLEMENT \$	AMOUNT PAID \$
BEGA				
BUCKLEY, Wess	CHRISTIAN DEMOCRATIC PARTY	1.66	-	-
CHINNOCK, Wilma	LABOR	34.94	15,289	15,289.00
CONSTANCE, Andrew	LIBERAL	46.88	20,513	20,513.00
HEDE, David	-	7.13	3,119	3,119.00
HODGE, Philip	AUSTRALIANS AGAINST FURTHER IMMIGRATION	1.85	-	-
PERGER, Margaret	THE GREENS	7.54	3,299	3,299.00
Undistributed Funds \$			2	
BLACKTOWN				
FORRESTER, John	THE GREENS	4.82	2,156	2,156.00
GESLING, Bernie	CHRISTIAN DEMOCRATIC PARTY	7.11	3,183	3,183.00
GIBSON, Paul	LABOR	61.66	21,111	21,111.00
IVOR, F	-	1.63	-	-
JIANG, Bill	UNITY PARTY	1.01	-	-
MCNAUGHT, Donald	AUSTRALIANS AGAINST FURTHER IMMIGRATION	3.03	-	-
SPENCER, Mark	LIBERAL	20.75	9,287	9,287.00
Undistributed Funds \$			6,485	
BLUE MOUNTAINS				
DWIGHT, Robert	AUSTRALIANS AGAINST FURTHER IMMIGRATION	1.96	-	-
KOPERBERG, Phil	LABOR	40.78	17,849	17,849.00
MCINNES, Pippa	THE GREENS	16.24	7,106	7,106.00
PAAG, Michael	LIBERAL	28.46	12,458	12,458.00
STOCK, Robert	-	10.98	4,807	4,807.00
WILCOX, Bob	ORP	1.58	-	-
Undistributed Funds \$			2	
BURRINJUCK				
FORDE, Jessica	COUNTRY LABOR	29.18	12,320	12,320.00
FYFE, Iain	THE GREENS	6.12	2,586	2,586.00
HODGKINSON, Katrina	NATIONALS	64.70	21,111	21,111.00
Undistributed Funds \$			6,205	

Appendix 25 Entitlements for the Legislative Assembly Election

CANDIDATES BY ELECTORAL DISTRICT	PARTY AFFILIATION	PERCENTAGE OF PRIMARY VOTES	ENTITLEMENT \$	AMOUNT PAID \$
CABRAMATTA				
GUTIERREZ, Rodrigo	THE GREENS	6.89	2,908	
MEAGHER, Reba	LABOR	69.08	21,111	21,111.00
SMITH, Victor	LIBERAL	16.33	6,893	6,893.00
SU, Andrew	UNITY PARTY	7.71	3,254	3,254.00
Undistributed Funds \$			8,056	
CAMDEN				
BELGRAVE, Leon	-	1.21	-	-
BOWEN, Chris	AUSTRALIANS AGAINST FURTHER IMMIGRATION	2.95	-	-
BUCHTMANN, Chris	-	0.83	-	-
CORRIGAN, Geoff	LABOR	44.78	21,111	21,111.00
MORRIS, Judy	CHRISTIAN DEMOCRATIC PARTY	3.79	-	-
PATTERSON, Chris	LIBERAL	38.57	18,399	18,399.00
POWELL, Allen	THE GREENS	5.16	2,461	2,438.00
THIRUP, Katryna	-	2.71	-	-
Undistributed Funds \$			251	
CAMPBELLTOWN				
COPAS, Stacey	LIBERAL	24.45	10,321	10,321.00
MARSH, Colin	AUSTRALIANS AGAINST FURTHER IMMIGRATION	7.19	3,035	1,898.00
WALDRON HAHN, Victoria	THE GREENS	6.59	2,783	2,783.00
WEST, Graham	LABOR	55.60	21,111	21,111.00
WRIGHT, David	CHRISTIAN DEMOCRATIC PARTY	6.17	2,606	819.00
Undistributed Funds \$			2,366	
CANTERBURY				
BURNEY, Linda	LABOR	57.08	21,111	21,111.00
CRONIN, Alan	AUSTRALIANS AGAINST FURTHER IMMIGRATION	1.90	-	-
DONAYRE, Christine	THE GREENS	13.04	5,799	3,681.98
HENNIEN, Ehab	CHRISTIAN DEMOCRATIC PARTY	3.15	-	-
MANSOUR, Philip	LIBERAL	18.32	8,146	8,146.00
REN, Jing	UNITY PARTY	6.51	2,894	2,894.00
Undistributed Funds \$			4,272	

Appendix 25 Entitlements for the Legislative Assembly Election

CANDIDATES BY ELECTORAL DISTRICT	PARTY AFFILIATION	PERCENTAGE OF PRIMARY VOTES	ENTITLEMENT \$	AMOUNT PAID \$
CASTLE HILL				
ALLEN, Darryl	CHRISTIAN DEMOCRATIC PARTY	5.34	2,295	2,295.00
FLANAGAN, Carol	THE GREENS	8.96	3,849	3,849.00
FOLEY, Mervyn	AUSTRALIANS AGAINST FURTHER IMMIGRATION	1.76	-	-
LIN, Sheng	UNITY PARTY	4.49	1,930	1,930.00
MUSTAFA, Alex	LABOR	22.92	9,852	9,852.00
RICHARDSON, Michael	LIBERAL	56.52	21,111	21,111.00
Undistributed Funds \$			3,185	
CESSNOCK				
HICKEY, Kerry	LABOR	54.81	21,111	21,111.00
HOLLINGSHEAD, Trevor	NATIONALS	31.38	13,248	13,248.00
RYAN, James	THE GREENS	13.81	5,830	5,824.94
Undistributed Funds \$			2,033	
CHARLESTOWN				
KENDALL, Jim	CHRISTIAN DEMOCRATIC PARTY	3.13	-	-
MORRIS, Matthew	LABOR	43.46	18,943	18,943.00
PATERSON, Lindsay	LIBERAL	18.63	8,121	8,121.00
SCARFE, Paul	-	24.56	10,706	10,706.00
SMITH, Jane	THE GREENS	10.21	4,450	4,206.38
Undistributed Funds \$			2	
CLARENCE				
BEHN, Doug	-	2.62	-	-
CANSDELL, Steve	NATIONALS	52.89	21,111	21,111.00
HOWE, Craig	-	7.47	3,238	3,238.00
JONGEN, Theo	THE GREENS	7.03	3,047	2,844.00
KINGSLEY, Mark	LABOR	30.00	13,005	13,005.00
Undistributed Funds \$			1,821	

Appendix 25 Entitlements for the Legislative Assembly Election

CANDIDATES BY ELECTORAL DISTRICT	PARTY AFFILIATION	PERCENTAGE OF PRIMARY VOTES	ENTITLEMENT \$	AMOUNT PAID \$
COFFS HARBOUR				
DEGENS, Rodney	THE GREENS	7.45	3,310	2,169.35
EVIC, Gerry	AUSTRALIANS AGAINST FURTHER IMMIGRATION	1.28	-	-
FRASER, Andrew	NATIONALS	51.96	21,111	21,111.00
KENNEDY, David	LABOR	20.68	9,191	9,191.00
LIONS, Deborah	CHRISTIAN DEMOCRATIC PARTY	3.70	-	-
RHOADES, Keith	-	14.93	6,632	6,632.00
Undistributed Funds \$			1,978	
COOGEE				
FLEGG, Jonathon	LIBERAL	35.78	15,747	15,747.00
MARKS, Kelly	THE GREENS	21.13	9,298	5,517.31
PEARCE, Paul	LABOR	39.03	17,176	17,176.00
TILLOTSON, Nicole	AUSTRALIAN DEMOCRATS	2.84	-	-
WU, Yuan	UNITY PARTY	1.22	-	-
Undistributed Funds \$			1	
CRONULLA				
CONSTANCE, Paul	LABOR	26.07	11,686	11,686.00
FEINBIER, Warren	AUSTRALIANS AGAINST FURTHER IMMIGRATION	3.03	-	-
KERR, Malcolm	LIBERAL	56.69	21,111	21,111.00
MOFFAT, John	-	2.78	-	-
SMITH, Beth	CHRISTIAN DEMOCRATIC PARTY	4.57	2,049	2,049.00
WAIZER, Naomi	THE GREENS	6.87	3,077	2,148.71
Undistributed Funds \$			4,299	
DAVIDSON				
BARNES, Clinton	AUSTRALIAN DEMOCRATS	2.72	-	-
KITSON, David	AUSTRALIANS AGAINST FURTHER IMMIGRATION	1.92	-	-
LENTERN, Jo-Anne	THE GREENS	13.51	5,982	5,982.00
MCLEOD, Doug	LABOR	16.82	7,446	7,446.00
O DEA, Jonathan	LIBERAL	60.42	21,111	21,111.00
YORK, Bruce	PARTY	4.61	2,040	2,040.00
Undistributed Funds \$			5,643	

Appendix 25 Entitlements for the Legislative Assembly Election

CANDIDATES BY ELECTORAL DISTRICT	PARTY AFFILIATION	PERCENTAGE OF PRIMARY VOTES	ENTITLEMENT \$	AMOUNT PAID \$
DRUMMOYNE				
D AMORE, Angela	LABOR	47.25	21,111	21,111.00
GRUENER, Edeltraud	AUSTRALIANS AGAINST FURTHER IMMIGRATION	1.12	-	-
HUSEYIN, Ozlem	UNITY PARTY	1.64	-	-
LONG, Greg	LIBERAL	36.65	16,579	16,579.00
ROONEY, Bernard	THE GREENS	9.44	4,268	1,155.20
STITT, Peter	ORP	0.92	-	-
VESCIO, Michael	-	2.97	-	-
Undistributed Funds \$			264	
DUBBO				
FARDELL, Dawn	-	41.66	18,442	18,442.00
HOUGH, Adrian	COUNTRY LABOR	11.13	4,928	4,928.00
MATTHEWS, Greg	NATIONALS	42.59	18,851	18,851.00
MCDONALD, Jan	THE GREENS	2.45	-	-
SICHEL, Michael	CHRISTIAN DEMOCRATIC PARTY	2.17	-	-
Undistributed Funds \$			1	
EAST HILLS				
ASHTON, Alan	LABOR	53.62	21,111	21,111.00
BROOKES, Glenn	LIBERAL	27.43	12,351	12,351.00
CHAVURA, Stephen	CHRISTIAN DEMOCRATIC PARTY	6.58	2,963	2,963.00
DALE, Francis	AUSTRALIANS AGAINST FURTHER IMMIGRATION	3.56	-	-
TIERNEY, Michael	THE GREENS	6.13	2,761	
TRUONG, Andy	UNITY PARTY	2.68	-	-
Undistributed Funds \$			3,036	

Appendix 25 Entitlements for the Legislative Assembly Election

CANDIDATES BY ELECTORAL DISTRICT	PARTY AFFILIATION	PERCENTAGE OF PRIMARY VOTES	ENTITLEMENT \$	AMOUNT PAID \$
EPPING				
BERGMAN, Michael	AUSTRALIANS AGAINST FURTHER IMMIGRATION	1.23	-	-
CAMPBELL, Nicole	LABOR	25.93	11,481	11,481.00
HAVYATT, David	AUSTRALIAN DEMOCRATS	1.73	-	-
KINGSMILL, John	CHRISTIAN DEMOCRATIC PARTY	4.23	1,871	1,664.00
LEVINE, Martin	-	5.44	2,409	2,409.00
METLIKOVEC, Christina	-	1.68	-	-
PETERS, Lindsay	THE GREENS	12.23	5,415	4,851.87
SMITH, Greg	LIBERAL	42.76	18,934	18,934.00
TAM, Simon	UNITY PARTY	4.76	2,109	2,109.00
Undistributed Funds \$			3	
FAIRFIELD				
CONNA, James	LIBERAL	22.66	9,819	9,819.00
GEBILAGIN, Lizza	THE GREENS	6.21	2,689	
SHARAH, Alex	CHRISTIAN DEMOCRATIC PARTY	5.30	2,297	1,436.62
TRIPODI, Joe	LABOR	58.28	21,111	21,111.00
VANDERWEL, John	AUSTRALIANS AGAINST FURTHER IMMIGRATION	2.59	-	-
YUEN, John	UNITY PARTY	4.97	2,155	2,155.00
Undistributed Funds \$			4,151	
GOSFORD				
ANDREWS, Marie	LABOR	42.66	19,311	19,311.00
ELLIS, Bryan	SOS	1.21	-	-
GRANT, George	CHRISTIAN DEMOCRATIC PARTY	2.87	-	-
HOLSTEIN, Chris	LIBERAL	34.82	15,761	15,761.00
MORRIS, Hillary	THE GREENS	6.88	3,116	3,116.00
MOULDS, Robert	AUSTRALIANS AGAINST FURTHER IMMIGRATION	2.64	-	-
WALES, Debra	-	8.91	4,032	4,032.00
Undistributed Funds \$			2	

Appendix 25 Entitlements for the Legislative Assembly Election

CANDIDATES BY ELECTORAL DISTRICT	PARTY AFFILIATION	PERCENTAGE OF PRIMARY VOTES	ENTITLEMENT \$	AMOUNT PAID \$
GOULBURN				
DORMAN, Bill	THE GREENS	6.60	2,844	2,844.00
GOWARD, Pru	LIBERAL	39.87	17,179	17,179.00
HUGHES, David	AUSTRALIANS AGAINST FURTHER IMMIGRATION	2.00	-	-
PARKER, Rob	LABOR	22.59	9,731	9,731.00
PEET, Geoff	CHRISTIAN DEMOCRATIC PARTY	4.23	1,823	1,823.00
STEPHENSON, Paul	-	24.70	10,642	10,642.00
Undistributed Funds \$			3	
GRANVILLE				
BORGER, David	LABOR	48.12	21,111	21,111.00
DOWMAN, Peter	AUSTRALIANS AGAINST FURTHER IMMIGRATION	1.79	-	-
GARRARD, Paul	-	9.52	4,450	4,450.00
PENDER, Karen	CHRISTIAN DEMOCRATIC PARTY	4.47	2,088	1,465.10
SARKIS, Eddy	LIBERAL	28.22	13,190	13,190.00
SU, Lily	UNITY PARTY	3.87	-	-
TYRRELL, Pauline	THE GREENS	4.00	-	-
Undistributed Funds \$			1,383	
HAWKESBURY				
HOWDEN, Jocelyn	THE GREENS	6.48	2,734	2,734.00
MCCOSKER, Alicia	LABOR	15.98	6,747	6,747.00
PRINGLE, Gregg	AUSTRALIANS AGAINST FURTHER IMMIGRATION	4.81	2,031	1,859.00
PRINGLE, Steven	-	27.12	11,450	11,450.00
WILLIAMS, Ray	LIBERAL	45.61	19,257	19,257.00
Undistributed Funds \$			3	
HEATHCOTE				
EVANS, Lee	LIBERAL	32.21	13,600	13,600.00
KELLY, Mary	AUSTRALIANS AGAINST FURTHER IMMIGRATION	4.38	1,849	1,816.00
MCLEAY, Paul	LABOR	43.17	18,228	18,228.00
MERRIN, Jill	THE GREENS	14.50	6,120	4,638.78
VANDERJAGT, John	CHRISTIAN DEMOCRATIC PARTY	5.74	2,422	2,422.00

Appendix 25 Entitlements for the Legislative Assembly Election

CANDIDATES BY ELECTORAL DISTRICT	PARTY AFFILIATION	PERCENTAGE OF PRIMARY VOTES	ENTITLEMENT \$	AMOUNT PAID \$
Undistributed Funds \$			3	
HEFFRON				
COGAN, James	-	2.14	-	-
KENEALLY, Kristina	LABOR	56.45	21,111	21,111.00
NASH, Scott	LIBERAL	21.75	9,386	9,386.00
SPIES-BUTCHER, Ben	THE GREENS	19.65	8,480	7,810.00
Undistributed Funds \$			3,245	
HORNSBY				
FALLON, Peter	AUSTRALIAN DEMOCRATS	1.51	-	-
GALLAGHER, Mick	-	3.11	-	-
HOPWOOD, Judy	LIBERAL	52.88	21,111	21,111.00
JOHNSTON, Ian	-	1.11	-	-
MCINTOSH, Janelle	LABOR	22.82	10,603	10,603.00
SHEPHERD, Lyndon	AUSTRALIANS AGAINST FURTHER IMMIGRATION	1.43	-	-
THEW, Leighton	CHRISTIAN DEMOCRATIC PARTY	4.62	2,148	2,148.00
TURNER, Catherine	THE GREENS	10.55	4,900	4,900.00
ZHOU, Fei	UNITY PARTY	1.96	-	-
Undistributed Funds \$			3,460	
KEIRA				
AUSSIE-STONE, Marcus	-	2.18	-	-
BRANDRETH, Kate	THE GREENS	12.91	5,663	4,944.77
CAMPBELL, David	LABOR	57.84	21,111	21,111.00
CARFIELD, George	CHRISTIAN DEMOCRATIC PARTY	4.94	2,166	1,770.97
MOULDS, David	LIBERAL	20.53	9,009	9,009.00
PATAKFALVY, Maria	AUSTRALIANS AGAINST FURTHER IMMIGRATION	1.60	-	-
Undistributed Funds \$			4,273	

Appendix 25 Entitlements for the Legislative Assembly Election

CANDIDATES BY ELECTORAL DISTRICT	PARTY AFFILIATION	PERCENTAGE OF PRIMARY VOTES	ENTITLEMENT \$	AMOUNT PAID \$
KIAMA				
BRIDGE, Garth	THE FISHING PARTY	3.87	-	-
BROWN, Matt	LABOR	50.67	21,111	21,111.00
BURNETT, Jack	AUSTRALIANS AGAINST FURTHER IMMIGRATION PARTY	1.49	-	-
KADWELL, John	LIBERAL	4.80	2,142	2,142.00
SUDMALIS, Ann	THE GREENS	30.50	13,606	13,606.00
VAN DER WIJNGAART, Ben	LABOR	8.67	3,867	3,867.00
Undistributed Funds \$			1,496	
KOGARAH				
BOLT, Therese	THE GREENS	7.11	3,128	1,665.07
BURTON, Cherie	LABOR	56.84	21,111	21,111.00
EL KHOURI, Peter	LIBERAL	26.98	11,863	11,863.00
HO, Marcus	UNITY PARTY	5.08	2,234	2,234.00
SVOLOS, Chris	CHRISTIAN DEMOCRATIC PARTY	3.99	-	-
Undistributed Funds \$			3,886	
KU-RING-GAI				
GEMMELL, Susie	THE GREENS	13.17	6,013	6,013.00
MACARTHUR-KING, Adrian	LABOR	13.75	6,279	6,279.00
O FARRELL, Barry	LIBERAL	65.55	21,111	21,111.00
SUN, Michael	UNITY PARTY	1.86	-	-
TSOULOS, Jeannette	AUSTRALIAN DEMOCRATS	2.36	-	-
WISZNIEWSKI, Witold	CHRISTIAN DEMOCRATIC PARTY	3.30	-	-
Undistributed Funds \$			8,819	
LAKE MACQUARIE				
HODGE, Leonard	AUSTRALIANS AGAINST FURTHER IMMIGRATION PARTY	1.81	-	-
HUNTER, Jeff	LABOR	40.54	17,823	17,823.00
MORGAN, Rex	CHRISTIAN DEMOCRATIC PARTY	2.16	-	-
PAXINOS, Ken	LIBERAL	19.48	8,566	8,566.00
PIPER, Greg	-	30.29	13,315	13,315.00
PRITCHARD, Suzanne	THE GREENS	5.72	2,516	2,516.00
Undistributed Funds \$			2	

Appendix 25 Entitlements for the Legislative Assembly Election

CANDIDATES BY ELECTORAL DISTRICT	PARTY AFFILIATION	PERCENTAGE OF PRIMARY VOTES	ENTITLEMENT \$	AMOUNT PAID \$
LAKEMBA				
DALRYMPLE, Garry	AUSTRALIAN DEMOCRATS	1.10	-	-
IEMMA, Morris	LABOR	73.90	21,111	21,111.00
KUNIANSKY, Joanne	-	0.55	-	-
MANSOUR, Morris	LIBERAL	13.20	6,397	6,397.00
MOUSSA, Omar	UNITY PARTY	3.42	-	-
SAMMUT, Josephine	CHRISTIAN DEMOCRATIC PARTY	3.97	-	-
SAWALHA, Bashir	THE GREENS	3.87	-	-
Undistributed Funds \$			14,714	
LANE COVE				
BAALBERGEN, Arie	CHRISTIAN DEMOCRATIC PARTY	2.32	-	-
BOTTING, Kate	AUSTRALIAN DEMOCRATS	4.36	1,923	1,923.00
FORREST, Shauna	THE GREENS	14.67	6,471	4,649.83
HO, William	UNITY PARTY	1.95	-	-
O DONNELL, Gabrielle	LABOR	24.44	10,780	10,780.00
ROBERTS, Anthony	LIBERAL	52.25	21,111	21,111.00
Undistributed Funds \$			1,937	
LISMORE				
GEORGE, Thomas	NATIONALS	54.19	21,111	21,111.00
GOUGH, Andy	THE GREENS	17.73	7,675	7,675.00
LANYON, Peter	LABOR	25.59	11,081	11,081.00
MELLAND, Julia	AUSTRALIAN DEMOCRATS	2.49	-	-
Undistributed Funds \$			2,355	
LIVERPOOL				
CASHMAN, Bill	THE GREENS	3.96	-	-
GELLING, Ian	AUSTRALIANS AGAINST FURTHER IMMIGRATION PARTY	2.12	-	-
HALL, Elizabeth	PARTY	4.18	1,911	1,911.00
LJUBICIC, Liliana	-	5.18	2,373	2,373.00
LYNCH, Paul	LABOR	64.91	21,111	21,111.00
MANNOUN, Ned	LIBERAL	17.96	8,221	8,221.00
TAI, Kek	UNITY PARTY	1.70	-	-
Undistributed Funds \$			8,606	

Appendix 25 Entitlements for the Legislative Assembly Election

CANDIDATES BY ELECTORAL DISTRICT	PARTY AFFILIATION	PERCENTAGE OF PRIMARY VOTES	ENTITLEMENT \$	AMOUNT PAID \$
LONDONDERRY				
BASSETT, Bart	LIBERAL	34.39	14,520	14,520.00
DEDMAN, Ross	AUSTRALIANS AGAINST FURTHER IMMIGRATION	4.77	2,014	1,666.00
MACRAE, Joel	THE GREENS	6.67	2,817	2,579.58
PHILLIPS, John	PARTY	6.64	2,802	2,304.00
SHEARAN, Allan	LABOR	47.53	20,066	20,066.00
Undistributed Funds \$			3	
MACQUARIE FIELDS				
ALLEN, Mick	-	1.70	-	-
BUTLER, Peter	THE GREENS	5.06	2,236	
CORRIGAN, Frank	FURTHER IMMIGRATION	2.80	-	-
FRASER, Nola	LIBERAL	33.07	14,622	14,622.00
GAYED, Hany	CHRISTIAN DEMOCRATIC PARTY	4.37	1,930	1,930.00
MCDONALD, Andrew	LABOR	53.00	21,111	21,111.00
Undistributed Funds \$			2,323	
MAITLAND				
BLACKMORE, Peter	-	26.58	11,220	11,220.00
DAVIS, Jan	THE GREENS	5.03	2,125	2,125.00
GEOGHEGAN, Bob	LIBERAL	20.51	8,661	8,661.00
TERENZINI, Frank	LABOR	39.66	16,746	16,746.00
TRANTER, Kellie	-	8.22	3,468	3,468.00
Undistributed Funds \$			2	
MANLY				
BAIRD, Mike	LIBERAL	45.12	19,870	19,870.00
BARR, David	-	31.23	13,753	13,753.00
HAMILTON, Neil	AUSTRALIANS AGAINST FURTHER IMMIGRATION	1.09	-	-
PEARCE, Daniel	LABOR	9.82	4,326	4,326.00
VANDERPOLL, Wally	CHRISTIAN DEMOCRATIC PARTY	1.41	-	-
WEATE, Sarah	THE GREENS	9.70	4,272	4,272.00
WYNNE, Penelope	-	1.63	-	-
Undistributed Funds \$			1	

Appendix 25 Entitlements for the Legislative Assembly Election

CANDIDATES BY ELECTORAL DISTRICT	PARTY AFFILIATION	PERCENTAGE OF PRIMARY VOTES	ENTITLEMENT \$	AMOUNT PAID \$
MAROUBRA				
AYRES, Anthony	UNITY PARTY	1.52	-	-
BELLELI, Robert	LIBERAL	27.73	12,657	12,657.00
BENNELL, Kirsten	AUSTRALIAN DEMOCRATS	2.29	-	-
DALEY, Michael	LABOR	52.86	21,111	21,111.00
GARDINER, Anne	THE GREENS	11.90	5,434	4,295.75
PITMAN, Derek	-	3.69	-	-
Undistributed Funds \$			3,020	
MARRICKVILLE				
BYRNE, Fiona	THE GREENS	32.55	14,976	14,976.00
CHEN, Grace	UNITY PARTY	1.32	-	-
EVE-MACLEOD, Martine	AUSTRALIAN DEMOCRATS	1.63	-	-
HINMAN, Pip	SOCIALIST ALLIANCE	1.58	-	-
MANSOUR, Ramzy	LIBERAL	12.57	5,784	5,784.00
O CONNOR, Patrick	-	0.51	-	-
TEBBUTT, Carmel	LABOR	46.64	21,111	21,111.00
TUILLETUFUGA, Joseph	CHRISTIAN DEMOCRATIC PARTY	1.50	-	-
WOOD, Angus	-	1.70	-	-
Undistributed Funds \$			351	
MENAI				
BHATT, Neerav	THE GREENS	4.51	2,057	1,253.30
CLYBURN, Mark	AUSTRALIAN DEMOCRATS	1.77	-	-
COLLINS, John	AUSTRALIANS AGAINST FURTHER IMMIGRATION	3.09	-	-
MCLACHLAN, Chris	-	2.60	-	-
MEGARRITY, Alison	LABOR	45.40	20,713	20,713.00
SIMPSON, Steve	LIBERAL	42.63	19,450	19,450.00
Undistributed Funds \$			2	

Appendix 25 Entitlements for the Legislative Assembly Election

CANDIDATES BY ELECTORAL DISTRICT	PARTY AFFILIATION	PERCENTAGE OF PRIMARY VOTES	ENTITLEMENT \$	AMOUNT PAID \$
MIRANDA				
ANNESLEY, Graham	LIBERAL	42.38	19,494	19,494.00
BRETT, John	-	1.63	-	-
BUNT, Rob	AUSTRALIAN DEMOCRATS	0.80	-	-
COLLIER, Barry	LABOR	42.77	19,675	19,675.00
FEINBIER, Samantha	AUSTRALIANS AGAINST FURTHER IMMIGRATION	2.18	-	-
SIMPSON, Julie	THE GREENS	6.64	3,052	1,452.73
YOUNG, Albert	CHRISTIAN DEMOCRATIC PARTY	3.61	-	-
Undistributed Funds \$			1	
MONARO				
FRAGIACOMO, Frank	-	2.80	-	-
MADEW, David	NATIONALS	39.34	17,088	17,088.00
MOORE, Catherine	THE GREENS	9.99	4,337	4,337.00
WHAN, Steve	COUNTRY LABOR	47.88	20,796	20,796.00
Undistributed Funds \$			1	
MOUNT DRUITT				
AMERY, Richard	LABOR	64.03	21,111	21,111.00
BILIC, George	LIBERAL	19.61	8,609	8,609.00
NEWTON, John	AUSTRALIANS AGAINST FURTHER IMMIGRATION	3.85	-	-
ROBERTSON, Debbie	THE GREENS	5.16	2,265	2,177.89
VINCENT, Dave	CHRISTIAN DEMOCRATIC PARTY	7.35	3,229	1,564.00
Undistributed Funds \$			7,008	
MULGOA				
BEAMER, Diane	LABOR	54.97	21,111	21,111.00
CHIJOFF, Karen	LIBERAL	35.31	14,907	14,907.00
DAKIN, Geoffrey	AUSTRALIANS AGAINST FURTHER IMMIGRATION	4.81	2,028	1,666.00
SMITH, Wade	THE GREENS	4.91	2,075	
Undistributed Funds \$			2,101	

Appendix 25 Entitlements for the Legislative Assembly Election

CANDIDATES BY ELECTORAL DISTRICT	PARTY AFFILIATION	PERCENTAGE OF PRIMARY VOTES	ENTITLEMENT \$	AMOUNT PAID \$
MURRAY-DARLING				
BLACK, Peter	COUNTRY LABOR	37.02	16,712	16,712.00
KENNEDY, Tom	-	2.64	-	-
PAGE, Ron	-	1.41	-	-
RENNER, Judy	THE GREENS	2.42	-	-
WILLIAMS, John	NATIONALS	56.51	21,111	21,111.00
Undistributed Funds \$			4,399	
MURRUMBIDGEE				
CARRUTHERS, Peter	THE GREENS	4.87	2,054	1,182.54
KIDD, Michael	COUNTRY LABOR	31.88	13,462	13,462.00
PICCOLI, Adrian	NATIONALS	63.25	21,111	21,111.00
Undistributed Funds \$			5,595	
MYALL LAKES				
CLANCY, Lisa	LABOR	20.38	9,111	9,111.00
DONNELLY, Judy	THE GREENS	6.00	2,681	2,396.50
LOFTUS, Eddie	-	18.90	8,448	8,448.00
PERRY, Waldron	AUSTRALIANS AGAINST FURTHER IMMIGRATION	2.25	-	-
STEPHENS, John	-	3.31	-	-
TURNER, John	NATIONALS	49.16	21,111	21,111.00
Undistributed Funds \$			871	
NEWCASTLE				
ARMSTRONG, Hilda	-	0.40	-	-
BABAKHAN, Martin	LIBERAL	9.79	4,246	4,246.00
GAUDRY, Bryce	-	21.03	9,122	9,122.00
HOLT, Noel	-	0.26	-	-
HUTABARAT, Simon	-	0.73	-	-
LEE, John	CHRISTIAN DEMOCRATIC PARTY	1.27	-	-
MCKAY, Jodi	LABOR	31.22	13,540	13,540.00
OSBORNE, Michael	THE GREENS	11.21	4,863	4,863.00
TATE, John	-	24.09	10,448	10,448.00
Undistributed Funds \$			3	

Appendix 25 Entitlements for the Legislative Assembly Election

CANDIDATES BY ELECTORAL DISTRICT	PARTY AFFILIATION	PERCENTAGE OF PRIMARY VOTES	ENTITLEMENT \$	AMOUNT PAID \$
NORTH SHORE				
BROCK, David	CHRISTIAN DEMOCRATIC PARTY	1.71	-	-
DEVOOGD, Jan	AUSTRALIAN DEMOCRATS	1.85	-	-
REID, Jim	-	7.30	3,196	3,196.00
SAVILLE, Lynne	THE GREENS	17.90	7,837	4,576.16
SKINNER, Jillian	LIBERAL	53.41	21,111	21,111.00
WINTON, Tabitha	LABOR	17.83	7,806	7,806.00
Undistributed Funds \$			2,272	
NORTHERN TABLELANDS				
BIBLE, Vanessa	THE GREENS	3.16	-	-
KELLY, Phillip	NATIONALS	17.73	7,896	7,896.00
STRUTT, Isabel	CHRISTIAN DEMOCRATIC PARTY	2.02	-	-
TORBAY, Richard	-	72.74	21,111	21,111.00
USHER, Phil	COUNTRY LABOR	4.34	1,933	1,933.00
Undistributed Funds \$			11,282	
OATLEY				
ADAIR, Michele	-	3.05	-	-
BAKER, Martin	CHRISTIAN DEMOCRATIC PARTY	4.21	1,879	1,879.00
BRISCOE-HOUGH, Greg	-	0.72	-	-
GAGE, Paul	THE GREENS	4.44	1,978	1,020.00
GRAY, Roger	LIBERAL	28.66	12,787	12,787.00
GREENE, Kevin	LABOR	52.40	21,111	21,111.00
LIU, Nancy	UNITY PARTY	4.92	2,195	2,195.00
MCGRATH, John	AUSTRALIANS AGAINST FURTHER IMMIGRATION	1.60	-	-
Undistributed Funds \$			2,272	
ORANGE				
BUCKINGHAM, Jeremy	THE GREENS	5.27	2,224	1,442.00
DAVIS, John	-	23.65	9,984	9,984.00
DUFFY, Kevin	COUNTRY LABOR	20.51	8,660	8,660.00
TURNER, Russell	NATIONALS	50.57	21,111	21,111.00
Undistributed Funds \$			243	

Appendix 25 Entitlements for the Legislative Assembly Election

CANDIDATES BY ELECTORAL DISTRICT	PARTY AFFILIATION	PERCENTAGE OF PRIMARY VOTES	ENTITLEMENT \$	AMOUNT PAID \$
OXLEY				
GARDYNE, Brian	AUSTRALIANS AGAINST FURTHER IMMIGRATION	3.02	-	-
HOLMES, Stuart	LABOR	24.96	11,121	11,121.00
STONER, Andrew	NATIONALS	59.10	21,111	21,111.00
STUMM, Sherry	AUSTRALIAN DEMOCRATS	2.22	-	-
TINDALL, Gabrielle	THE GREENS	10.70	4,766	4,758.91
Undistributed Funds \$			5,224	
PARRAMATTA				
CHEDID, John	LIBERAL	28.83	13,189	13,189.00
GADIEL, Tanya	LABOR	51.38	21,111	21,111.00
HENDRY, Tim	THE GREENS	6.67	3,053	3,016.43
MANSFIELD, John	AUSTRALIANS AGAINST FURTHER IMMIGRATION	1.94	-	-
MCFARLANE, Robert	AUSTRALIAN DEMOCRATS	1.83	-	-
MORRISON, Doug	CHRISTIAN DEMOCRATIC PARTY	5.40	2,472	890.50
WONG, Ada	UNITY PARTY	3.95	-	-
Undistributed Funds \$			2,397	
PENRITH				
BROWN, Geoff	-	3.57	-	-
GREEN, Andrew	CHRISTIAN DEMOCRATIC PARTY	6.20	2,813	2,813.00
HITCHEN, Tricia	LIBERAL	32.55	14,783	14,783.00
MAVIN, Anthony	AUSTRALIANS AGAINST FURTHER IMMIGRATION	2.56	-	-
PALUZZANO, Karyn	LABOR	48.66	21,111	21,111.00
WATERS, Geraldine	AUSTRALIAN DEMOCRATS	0.89	-	-
WRIGHT, Suzie	THE GREENS	5.56	2,526	526.44
Undistributed Funds \$			989	

Appendix 25 Entitlements for the Legislative Assembly Election

CANDIDATES BY ELECTORAL DISTRICT	PARTY AFFILIATION	PERCENTAGE OF PRIMARY VOTES	ENTITLEMENT \$	AMOUNT PAID \$
PITTWATER				
BOYDELL, Pat	LABOR	7.36	3,297	3,297.00
BYRNE, Charles	AUSTRALIANS AGAINST FURTHER IMMIGRATION	1.57	-	-
GILES, Patricia	CHRISTIAN DEMOCRATIC PARTY	3.26	-	-
MCTAGGART, Alex	-	26.85	12,024	12,024.00
MCWHIRTER, Craig	THE GREENS	9.77	4,372	4,372.00
NICOTRA, Mario	AUSTRALIAN DEMOCRATS	0.88	-	-
STOKES, Rob	LIBERAL	50.31	21,111	21,111.00
Undistributed Funds \$			1,418	
PORT MACQUARIE				
HAYES, Monica	LABOR	9.15	4,034	4,034.00
OAKESHOTT, Robert	-	67.14	21,111	21,111.00
REID, Frank	AUSTRALIANS AGAINST FURTHER IMMIGRATION	1.53	-	-
RUSSELL, Susie	THE GREENS	2.75	-	-
WILLIAMS, Leslie	NATIONALS	19.44	8,573	8,573.00
Undistributed Funds \$			8,504	
PORT STEPHENS				
ARNEMAN, Jim	LABOR	41.68	18,542	18,542.00
BAUMANN, Craig	LIBERAL	42.50	18,907	18,907.00
ECKERSLEY, Charmian	THE GREENS	6.04	2,686	2,686.00
HENNELLY, Paul	THE FISHING PARTY	4.69	2,085	
HIGGINS, Margaret	CHRISTIAN DEMOCRATIC PARTY	2.94	-	-
WOOD, Lawrence	AUSTRALIANS AGAINST FURTHER IMMIGRATION	2.17	-	-
Undistributed Funds \$			2	
RIVERSTONE				
AQUILINA, John	LABOR	53.63	21,111	21,111.00
ATKINS, Ronald	AUSTRALIANS AGAINST FURTHER IMMIGRATION	3.32	-	-
CONOLLY, Kevin	LIBERAL	35.11	15,930	15,930.00
JARECKI, Sheryl	THE GREENS	4.32	1,960	
PETTITT, Tony	-	3.62	-	-

Appendix 25 Entitlements for the Legislative Assembly Election

CANDIDATES BY ELECTORAL DISTRICT	PARTY AFFILIATION	PERCENTAGE OF PRIMARY VOTES	ENTITLEMENT \$	AMOUNT PAID \$
Undistributed Funds \$			3,221	
ROCKDALE				
ABBAS, Amin	-	1.28	-	-
AZEL, Leslyanne	SOS	1.11	-	-
GESTAKOVSKA, Lili	LIBERAL	33.33	14,794	14,794.00
MCGILLICUDDY, Liam	THE GREENS	7.55	3,349	1,773.00
SARTOR, Frank	LABOR	50.22	21,111	21,111.00
WALSH, Brian	-	4.02	1,784	
WANG, Gang	UNITY PARTY	2.49	-	-
Undistributed Funds \$			1,184	
RYDE				
BELL, Peter	THE GREENS	7.87	3,702	3,702.00
CHIN, Kevin	UNITY PARTY	3.61	-	-
GOLDFINCH, Peter	AUSTRALIAN DEMOCRATS	1.40	-	-
GRUENER, Furgen	AUSTRALIANS AGAINST FURTHER IMMIGRATION	1.58	-	-
PEEBLES, Robyn	CHRISTIAN DEMOCRATIC PARTY	3.66	-	-
PETCH, Ivan	-	8.45	3,974	
TAGG, Vic	LIBERAL	28.60	13,453	13,453.00
WATKINS, John	LABOR	44.84	21,091	21,091.00
Undistributed Funds \$			2	
SHELLHARBOUR				
DARLING, Alex	-	17.33	7,506	7,506.00
MCKAY, Sonya	THE GREENS	7.58	3,284	3,284.00
MCCMAHON, Lylea	LABOR	57.82	21,111	21,111.00
PATAKALVY, Tibor	AUSTRALIANS AGAINST FURTHER IMMIGRATION	2.52	-	-
WRIGHT, Stuart	LIBERAL	14.75	6,389	6,389.00
Undistributed Funds \$			3,932	

Appendix 25 Entitlements for the Legislative Assembly Election

CANDIDATES BY ELECTORAL DISTRICT	PARTY AFFILIATION	PERCENTAGE OF PRIMARY VOTES	ENTITLEMENT \$	AMOUNT PAID \$
SMITHFIELD				
KHOSHABA, Ninos	LABOR	52.38	21,111	21,111.00
PENDER, Liam	CHRISTIAN DEMOCRATIC PARTY	5.42	2,447	779.00
PHU, Minh	UNITY PARTY	3.04	-	-
PINI, Alexander	AUSTRALIANS AGAINST FURTHER IMMIGRATION	3.43	-	-
ROHAN, Andrew	LIBERAL	27.54	12,432	12,432.00
VEGA, Vladin	THE GREENS	8.20	3,699	
Undistributed Funds \$			2,533	
SOUTH COAST				
DOBSON, Rex	AUSTRALIANS AGAINST FURTHER IMMIGRATION	2.44	-	-
FINDLEY, Amanda	THE GREENS	9.23	3,994	3,994.00
GREEN, Paul	CHRISTIAN DEMOCRATIC PARTY	6.35	2,747	2,747.00
HANCOCK, Shelley	LIBERAL	49.04	21,111	21,111.00
MIRAN, Michelle	LABOR	32.95	14,257	14,257.00
Undistributed Funds \$			113	
STRATHFIELD				
CAI, Benjamin	UNITY PARTY	4.50	1,992	1,992.00
CARNEY, Bill	LIBERAL	29.36	13,003	13,003.00
GARSON, Patrick	AUSTRALIAN DEMOCRATS	1.35	-	-
JUDGE, Virginia	LABOR	52.12	21,111	21,111.00
MALONEY, John	CHRISTIAN DEMOCRATIC PARTY	3.32	-	-
SACCO, Michele	THE GREENS	9.35	4,139	2,183.56
Undistributed Funds \$			1,977	
SWANSEA				
ABRAHAMS, Barbara	AUSTRALIANS AGAINST FURTHER IMMIGRATION	2.38	-	-
COGHLAN, Laurie	-	14.82	6,724	6,724.00
COOMBS, Robert	LABOR	45.89	20,820	20,820.00
EDWARDS, Garry	LIBERAL	23.76	10,780	10,780.00
LEE, Peter	AUSTRALIAN DEMOCRATS	1.32	-	-
WOOD, Jill	CHRISTIAN DEMOCRATIC PARTY	3.25	-	-

Appendix 25 Entitlements for the Legislative Assembly Election

CANDIDATES BY ELECTORAL DISTRICT	PARTY AFFILIATION	PERCENTAGE OF PRIMARY VOTES	ENTITLEMENT \$	AMOUNT PAID \$
WYNN, Sue	THE GREENS	8.59	3,896	3,896.00
Undistributed Funds \$			2	
SYDNEY				
CHOYCE, Imanuel	UNITY PARTY	1.49	-	-
DUNCAN, Malcolm	-	1.78	-	-
HARRIS, Chris	THE GREENS	15.56	6,790	6,790.00
MANDLA, Edward	LIBERAL	21.55	9,408	9,408.00
MOORE, Clover	-	39.62	17,293	17,293.00
SCOTT, Linda	LABOR	20.00	8,728	8,728.00
Undistributed Funds \$			3	
TAMWORTH				
ANDERSON, Kevin	NATIONALS	40.34	17,897	17,897.00
DRAPER, Peter	-	46.24	20,514	20,514.00
HEUSTON, Stan	-	0.47	-	-
MAMMEN, Neville	CHRISTIAN DEMOCRATIC PARTY	2.17	-	-
MCHUGH, Denise	COUNTRY LABOR	8.59	3,809	3,809.00
PARSONS, Norman	AUSTRALIANS AGAINST FURTHER IMMIGRATION	0.98	-	-
TAYLOR, Bruce	THE GREENS	1.21	-	-
Undistributed Funds \$			2	
TERRIGAL				
BEGG, David	ORP	1.20	-	-
ELLIS, Mark	SOS	1.04	-	-
HARTCHER, Chris	LIBERAL	49.91	21,111	21,111.00
HAYES, Kay	AUSTRALIANS AGAINST FURTHER IMMIGRATION	2.19	-	-
JONES, Terry	THE GREENS	8.60	3,925	3,539.45
MCALLAN, Mark	CHRISTIAN DEMOCRATIC PARTY	3.04	-	-
O NEILL, Deborah	LABOR	34.01	15,519	15,519.00
Undistributed Funds \$			1,667	

Appendix 25 Entitlements for the Legislative Assembly Election

CANDIDATES BY ELECTORAL DISTRICT	PARTY AFFILIATION	PERCENTAGE OF PRIMARY VOTES	ENTITLEMENT \$	AMOUNT PAID \$
THE ENTRANCE				
MCBRIDE, Grant	LABOR	47.49	20,864	20,864.00
OVEREND, Maria	AUSTRALIANS AGAINST FURTHER IMMIGRATION	3.90	-	-
PARRY-JONES, Kerryn	THE GREENS	8.83	3,879	3,879.00
WALKER, Phil	LIBERAL	39.78	17,478	17,478.00
Undistributed Funds \$			1	
TOONGABBIE				
BAISSARI, Sam	CHRISTIAN DEMOCRATIC PARTY	7.94	3,559	1,344.00
CAREY, Norman	AUSTRALIANS AGAINST FURTHER IMMIGRATION	3.93	-	-
LLOYD, Kirsty	LIBERAL	27.61	12,387	12,387.00
REES, Nathan	LABOR	51.72	21,111	21,111.00
REN, Chuan	UNITY PARTY	1.95	-	-
WILLIAMSON, Doug	THE GREENS	6.85	3,071	3,071.00
Undistributed Funds \$			2,094	
TWEED				
BOYD, Julie	-	3.04	-	-
KING, Will	AUSTRALIANS AGAINST FURTHER IMMIGRATION	1.34	-	-
LAWRIE, Gavin	-	3.05	-	-
NEWELL, Neville	LABOR	38.62	17,612	17,612.00
PROVEST, Geoff	NATIONALS	46.21	21,075	21,075.00
TABART, Tom	THE GREENS	7.75	3,533	3,533.00
Undistributed Funds \$			2	
UPPER HUNTER				
LECKY, Jennifer	COUNTRY LABOR	31.27	13,204	13,204.00
SMILES, Bev	THE GREENS	8.53	3,600	3,600.00
SOURIS, George	NATIONALS	60.20	21,111	21,111.00
Undistributed Funds \$			4,307	

Appendix 25 Entitlements for the Legislative Assembly Election

CANDIDATES BY ELECTORAL DISTRICT	PARTY AFFILIATION	PERCENTAGE OF PRIMARY VOTES	ENTITLEMENT \$	AMOUNT PAID \$
VAUCLUSE				
DEBNAM, Peter	LIBERAL	59.91	21,111	21,111.00
RAHILL, Alison	LABOR	19.64	8,293	8,293.00
SHOEBRIDGE, David	THE GREENS	20.45	8,632	6,357.81
Undistributed Funds \$			4,186	
WAGGA WAGGA				
ELLIOTT-RUDDER, Glenn	COUNTRY LABOR	32.55	13,745	13,745.00
GOODLASS, Ray	THE GREENS	8.40	3,544	1,450.00
MAGUIRE, Daryl	LIBERAL	59.05	21,111	21,111.00
Undistributed Funds \$			3,822	
WAKEHURST				
CHAVEZ, Patricio	LABOR	23.96	10,815	10,815.00
HARRIS, Conny	THE GREENS	12.64	5,705	3,485.85
HAZZARD, Brad	LIBERAL	56.94	21,111	21,111.00
JOHANSON, Georgina	AUSTRALIAN DEMOCRATS	3.55	-	-
MOODY, Thomas	AUSTRALIANS AGAINST FURTHER IMMIGRATION	2.90	-	-
Undistributed Funds \$			4,591	
WALLSEND				
CAINE, Milton	CHRISTIAN DEMOCRATIC PARTY	4.70	1,983	1,983.00
DAVIES, Dallas	THE FISHING PARTY	6.75	2,849	
HERINGTON, James	LIBERAL	25.36	10,708	10,708.00
HORNERY, Sonia	LABOR	51.04	21,111	21,111.00
PARSONS, Keith	THE GREENS	12.15	5,131	4,489.04
Undistributed Funds \$			440	
WILLOUGHBY				
BEATTIE, Linda	LABOR	15.18	6,793	6,793.00
BEREJKLIAN, Gladys	LIBERAL	50.17	21,111	21,111.00
DAY, Roy	AUSTRALIAN DEMOCRATS	1.14	-	-
HENG, Esther	CHRISTIAN DEMOCRATIC PARTY	1.67	-	-
KAM, Cherie	UNITY PARTY	2.84	-	-

Appendix 25 Entitlements for the Legislative Assembly Election

CANDIDATES BY ELECTORAL DISTRICT	PARTY AFFILIATION	PERCENTAGE OF PRIMARY VOTES	ENTITLEMENT \$	AMOUNT PAID \$
REILLY, Pat	-	17.81	7,971	
STEEL, Mike	THE GREENS	11.19	5,006	3,501.34
Undistributed Funds \$			1,341	
WOLLONDILLY				
COSTA, Phil	LABOR	44.30	19,125	19,125.00
HILTON, Sharryn	LIBERAL	39.25	16,943	16,943.00
HUNT, Geraldine	THE GREENS	6.96	3,005	2,994.67
NELMES, Maurice	-	2.20	-	-
STEWART, Danny	-	7.29	3,146	3,146.00
Undistributed Funds \$			3	
WOLLONGONG				
CHEHOFF, Michael	AUSTRALIANS AGAINST FURTHER IMMIGRATION	1.87	-	-
FARES, Lenny	-	4.56	2,022	2,022.00
FOWLER, Colin	LIBERAL	16.79	7,450	7,450.00
HAY, Noreen	LABOR	58.37	21,111	21,111.00
JONES, Trevor	THE GREENS	9.80	4,347	3,969.94
MOORE, Jess	SOCIALIST ALLIANCE	1.36	-	-
PRATT, Clarrie	CHRISTIAN DEMOCRATIC PARTY	5.65	2,504	2,150.92
ROBERTS, Madeleine	AUSTRALIAN DEMOCRATS	1.62	-	-
Undistributed Funds \$			4,788	
WYONG				
BEST, Greg	-	14.31	6,464	6,464.00
HARRIS, David	LABOR	42.52	19,215	19,215.00
LOEL, Adrian	CHRISTIAN DEMOCRATIC PARTY	2.72	-	-
MORTON, Ben	LIBERAL	31.56	14,260	14,260.00
RICKARD, Scott	THE GREENS	5.05	2,281	2,108.82
SPARK, Richard	AUSTRALIANS AGAINST FURTHER IMMIGRATION	3.84	-	-
Undistributed Funds \$			2	

Appendix 26 List of Donors the Authority referred to the Crown Solicitor for failing to lodge a declaration by the due date of 30 August 2007

2SM Radio	Allco Finance Group
A & A Development Pty Ltd	Alpha Tax Aid P/L
A Beasley	Alphaone
A Hadid	Ambit Recruitment Group
A Mekler	Anacon Australia Pty Ltd
AAPT Ltd	Andrew Dimoff Pty Ltd
ABC Learning Centres Ltd	Andrew Paddon
ABC Tissue Products Pty Ltd	Andrews Meat Industries
ABL Group P/L T/as Authentic Bricklaying	Anka Property Group
ABL State Chamber (NSW Business Chamber)	Anthony Sukari
Access Security Protection Services Pty Ltd	Anthony Tuite
Acer Computer Australia Pty Ltd	ANZ Banking Group Ltd
Acoustic Logic Consultancy	AON
Aden Ridgeway	AP Mail Management
Adsteam Marine Limited	Apic Holdings Limited
Advanced Mechanical Systems Pty Ltd	App Corporation Pty Ltd
Advantis (Qld) Pty Ltd	Ari P/L
Aenenman Pty Ltd	Arkbay Investments
Aero-Care	Arm Holdings Pty Ltd
Affinity Health Ltd	Armone Corporation Pty Ltd
AHA Charity and Social Club	Aroney Inv. Co & Carrington Properties
Ainsworth Game Technology Ltd	Aruze Gaming Australia
Akbar Khan	Ascend Asset Management Ltd
Alan & Helen Moyle	Ashe Morgan Winthrop
Alan Davis Pty Ltd	Aska Aluminium Pty Ltd
Alastair Walton	Association of Super Funds of Australia (ASFA)
Alfred Chehab	Assyrian Aust Assoc Nineveh Sports Club
Alison Byrnes	Astrazeneca Pty Ltd

Appendix 26 List of Donors the Authority referred to the Crown Solicitor for failing to lodge a declaration by the due date of 30 August 2007

Ataki Holding P/L	B Dillion
Audi Australia Pty Ltd	B-1st Choice Constructions Pty Ltd
Auspro Building Services Pty Ltd	Baiada Pty Ltd
Aussie Stadium	Ballarat Enterprises Pty Ltd, John Boyd Properties
Aust Natural Care	Balmain Leagues Club
Austerand Pty Ltd - ATF Benefit Australia Foundation	Balmain NB Commercial Mortgages Ltd
Australia Fujian Chamber of Commerce Ltd	Bamburgh Properties Pty Ltd
Australia-China Liaison Association	Bank of New Zealand
Australian Automobile Association	Barker Anderson Pty Ltd
Australian Capital Equity	Baron Corporation Pty Ltd
Australian Co-Operative Foods Ltd.	Barrigen Pty Ltd
Australian Financial Investments Group Ltd	Baulderstone Hornibrook Pty Ltd
Australian Financial Markets Association (AFMA)	Baxter Healthcare Pty Ltd
Australian Health Insurance Association	BBS Constructions P/L
Australian Hoteliers Association	BDO Chartered Accountants
Australian International Conservatorium of Music	Becton Construction Group Pty Ltd
Australian International Hotel School	Beerworth and Partners Ltd
Australian International Trade Association	Beijing AustChina Technology Ltd
Australian Manufacturing Workers' Union (AMWU)	Bell Potter Securities Ltd
Australian Power & Energy Ltd	Bellata Gold Pty Ltd
Australian Retailers Association NSW Div	Bellwether Pharmaceuticals
Australian Rural Expo Pty Ltd	Belmadar Constructions Pty Ltd
Australian-China Trade Promotion Centre	Benchmark Australia
Australia's Best Tyre Service	Bendigo Bank
AVS Group of Companies	Bendshaw Pty Ltd
AWU (Australian Workers Union) - National Office	Benrace Pty Ltd
AWU (Australian Workers Union) Greater NSW Branch	Betrola Pty Ltd
B Alworth	Betsy-Anne Howe

Appendix 26 List of Donors the Authority referred to the Crown Solicitor for failing to lodge a declaration by the due date of 30 August 2007

Better Buildings Pty Ltd	Bruce Lyon
Bevilacqua Investments Pty Ltd	Buddy Wakim
Bezzina Developments Pty Ltd	Bush Consulting Services
Big River Timbers	Business Information Services
Bill Berga and John Kinsela T/as Waterfront Pty Ltd	C and G Ritchie Holdings Pty Ltd
Billich Gallery	C J Picone
Bing Lee Electrics Pty Ltd	C Liew
Biogen Idec Australia Pty Ltd	C Mellick
Biosys Holdings Pty Ltd	C Pine
Blohm and Voss Assets P/L	c/- Channel Seven
Bluefire Group	Caltex Ltd
Bluescope Steel	Cambridge Tavern T/as Kurnell Investments Pty Ltd
Bond Street Jewellers	Capital Alliance Group Pty Ltd
Bonview Holdings Pty Ltd	Cargo Bar
Boorpah Pty Ltd	Carpetland
Boral Timber	Carrols Pty Ltd
Botannich Projects	Cartier Group
Bovis Lend Lease	Cavasign Pty Ltd
Boyd Munro	Cayuga Pty Ltd
Brand Architecture International	CBD Energy Pty Ltd
Brenex Pty Ltd	Central Investments and Developments Pty Ltd
Brereton Pty Ltd	Centre for Advanced Manufacturing Research
Brian Lee	Centro Citta
Brian McGettigan	CFS Investments Ltd
Bridge Discount Furniture	Challenge Property Investments
Brighton Australia Pty Ltd	Char International Pty Ltd
Brighton Le Sands Restaurant	Charles Chau
Bruce Butcher	Cherie Schipp-Murray

Appendix 26 List of Donors the Authority referred to the Crown Solicitor for failing to lodge a declaration by the due date of 30 August 2007

China Travel Services (Aust) Pty Ltd	Copatress Pty Ltd (Winners Circle Group Pty Ltd)
China.com	Corinne Townsend
Chinamarket	Coverforce Pty Ltd
Christopher Cheung	CPR Communication & Public Relations Pty Ltd
Churchills Sports Bar	Creswick Holdings Pyt Ltd
Citaden Pty Ltd	Crone Partners Architecture Studios
Citibank P/L	Crown Properties
City Building Pty Ltd	Crownland Developments
Claims Management	Crystal Car Wash
Clark Pollard and Co Pty Ltd	CSL Ltd
Class Aluminium Windows Pty Ltd	Cumberland Newspaper Group
Clayton Utz - ACT	Customedia Pty Ltd
Cliff Guy Productions	Customer Service Institute of Australia
Clinton Toyota Narellan	Cutler Hughes and Harris
Clune John Nominees	CW Donald-Oates
Coal and Allied Pty Ltd	Cycle & Carriage Automotive Services Pty Ltd
Coastal Transport	Cyprus Hellenic Club
Colin W Love & Co Lawyers	Cyril Maloney
Colorpak Packaging P/L	D and G Cinemas Pty Ltd
Comax-Pharma Pty Ltd	D Coleman
Comelli Bros	D L Electrics Enterprises
Computer Associates Pty Ltd	D Mathlin
Con Mormanis	Dairy Farmers
Condox No 49 Pty Ltd	Dandaloo Development Trust & Harpak Developments Pty Ltd
Constructive Advice Pty Ltd	Danielle Roche
Coogee Palace Pty Ltd	Danny Chea
Cookson Plibrico Pty Ltd	David Bernard
Cooper Hotel Brokers	David Leckie

Appendix 26 List of Donors the Authority referred to the Crown Solicitor for failing to lodge a declaration by the due date of 30 August 2007

David Lu	DTW Uther and Associates
David Nathan	Duncan Consulting Pty Ltd
David Thomas	Dunktex Pty Ltd
Davidson Cameron & Co	Dunmore Sand & Soil Pty Ltd
Deemahstone	E & M Dekleva
Delmege Commercial	E and L Cassar
Delvcorp Pty Ltd T/as EMD Workforce Development	E Cooper
Demerton Pty Ltd	E J Cooper Printing
Demian Developments Pty Ltd	Economia PDS
DEPASA Pty Ltd	EGM Hotels Pty Ltd
Designer Rugs	Egypt News Co.
DEV 2000 Pty Ltd	EMERSONS Australia
Device Technologies Australia Pty Ltd	Emirates Australia
Di Lorenzo	Endeavour Holdings Pty Ltd
Di Lorenzo Ceramics Pty Ltd	Energy Investments Ltd
Diamond Hill Holdings P/L	Enterprise Finance Solutions Pty Ltd
Dickson Rothschild Pty Ltd	Enviro Seen Reclamations
Digital Electronics	Environmental Group Ltd (EGL)
Digital Radio Broadcast	Ernest Wong
Directions Conference & Incentive Management	ES Tadros
Distilled Spirits Industry Council of Australia Inc	Esdtrade Pty Ltd
DML Associates	Estate Constructions of Australia Pty Ltd
Doltone House Group Pty Ltd	ETCOM
Doma Constructions Pty Ltd	Executive Properties Pty Ltd
Donald Frio	Fai Yuen Lam
Dowling Real Estate Commercial	Fairfield City Council
Dr Stanley Ho	Fedele Galluzzo
Dream Investments Pty Ltd	Feng Yii Yih Jen Pty Ltd

Appendix 26 List of Donors the Authority referred to the Crown Solicitor for failing to lodge a declaration by the due date of 30 August 2007

Ferios Group	G Stevens
Ferrier Hodgson	Ganellen Pty Ltd
Fertility Society Australia	Garo Gabrielian
Finta Pty Ltd	Garro's Party Hire
Focus Publishing	Garwan Pastoral Company Pty Ltd
Ford Comm Consulting Pty Ltd	Gavin Turfo
Ford Communications Pty Ltd	Gemini Group
Foreign Language Publications	Gemsail Pty Ltd
Formbrace Pty Ltd	Geoff Young
Fortuna Funds Management	George Patterson Partners
Foster's Group	Gerard Lawson
Foti International Fireworks	GH Varley
Foti Property Valuations Pty Ltd	Ghassan Karaki
Fouma Constructions	Gibbs Government and Corporate Relations
Four Wheel Drive NSW & ACT	Gilbert & Tobin
Francis Doyle	GIO Australia
Frank Carioti	Glad Cleaning Services
Frank Chou	Gladesville Hospital
Frank McManus	Glaxosmithkline Australia
Frank Vella	Glen Alpine
Fraternity Bowling & Recreation Club	Glen Alpine Constructions Pty Ltd
FRG Developments Pty Ltd	Glencore Australia
G & J Evans & Reynolds	Globalstar Australia Pty Ltd
G Evans	Gold Medal Developments Pty Ltd
G Jennes	Golden Sheaf Hotel
G Loosen	Goldsmiths Frames and Trusses Pty Ltd
G Noble	Goodrich Control Systems Pty Ltd
G P Calligeros Pty Ltd T/as Rag & Famish Hotel	Gosford Hotel

Appendix 26 List of Donors the Authority referred to the Crown Solicitor for failing to lodge a declaration by the due date of 30 August 2007

Graeme Bailey	Hawaain Investments
Graham Group	Hayman Island
Grain Growers Association Ltd	Haypen Pty Ltd
Grand Hotel Wyong Pty Ltd	Hayson Associates (Sales) Pty Ltd
Grant Vandenberg	Health Industry Group Training Company
Greek Labor Consultative	Hewlett Packard Australia
Greenbank Capital Pty Ltd	Higgins Earthmoving Pty Ltd
Grocon Ltd	Hill & Knowlton
Group Colleges Australia	Hindmarsh Group (ACT)
Group Pty Ltd	Hockey First National Real Estate
Gucine Pty Ltd	Holiday (Aust) Investments Group
Guildford Hotel	Holroyd Bus Lines Pty Ltd
Gulf Air	HomeWorld
Gullotta Pharmacy	Hornsby RSL Club
Gus & Anna Minett	Hoyt Food Manufacturing Industries P/L
Guy Milson	HPM Industries
GWH & Hunter Ready Mixed Concrete P/L	HTT Huntley Heritage Pty. Ltd.
H and E Chen	Hunter Valley Accommodation Centre Pty Ltd
H Hagobian	Huntley Heritage
H Hassarati & Co Pty Ltd	Huntley Heritage Est.
Hacorp Pty Ltd	Hurstville Real Estate Pty Ltd
Hall Chadwick Chartered Accountants	Hydro Aluminium Kurri Kurri Pty Ltd
Hamish Davidson	Hydro Produce (Aust) Pty Ltd
Hansen Yuncken Pty Ltd	Hyne Timber
Hardie Holdings Pty Ltd	Hy-Tec industries Pty Ltd
Harris Farm Markets P/L	Ian Gowrie-Smith
Harvey World Travel	Ian Renwood
Hastings	IBD

Appendix 26 List of Donors the Authority referred to the Crown Solicitor for failing to lodge a declaration by the due date of 30 August 2007

IFC Capital Limited	J W Jacobson Pty Ltd
IGA Bondi	J W Mailing Services P/L
IGA Distribution Pty Ltd	Jackie Waterhouse
Illawarra Coal, BHP Billiton	Jackson Hung
Independent Liquor Stores Association	Jacobsen Entertainment Group
Indo-Chinese Elderly Hostel	Jaemax Pty Ltd
Industrial Property Consultant	James Fielding Group
ING Real Estate	Jempac Property Development
Ingleburn Bus Services Pty Ltd	Jetobee Pty Ltd
Institute of Actuaries of Australia	Jiamin Yang
Intelmail Explorenet P/L	Jian Zhon Zhao
International Nippon Australia/New Zealand Club	Jin W Lin
IRI.0.5.3 Pty Ltd	Jin Weixing
IPA Personnel NSW	Joe Cantania
IPA Personnel Qld	Joe Saliba
IQMS Pty Ltd	John Boyd
ISN Solutions Pty Ltd	John Boyd Properties
IVF Australia P/L	John Holland
J & G Excavations P/L	John Holland Group Pty Ltd
J Bell	John Sanidas
J De Giorgio	John Shi
J Group Pty Ltd	John Trlin
J Hart	John Tullis
J K Developments Pty Ltd	Johnson and Britton Real Estate
J Latorre	Johnson and Johnson Medical Pty Ltd
J McCulloch	Jonathan Gould
J Pizzolato	Jonathon Huang
J Tannous	Joseph Brender AO

Appendix 26 List of Donors the Authority referred to the Crown Solicitor for failing to lodge a declaration by the due date of 30 August 2007

Joseph Cross	Land & Planning Solutions P/L
Jovan Homes	Larpa Holdings
JP Morgan Chase Bank, N.A.	Latian Pty Ltd T/A Hotel Mosman
JS McMillan Pty Ltd	Laundy Exhibition Pty Ltd
Jun Pacific Corporation Pty Ltd	Laxala Pty Ltd
Junction Hotel	Lazard Pty Ltd
Jupiters Limited	Le Sands Restaurant
K & K Real Estate Pty Ltd	Len Ainsworth
K Bricks Pty	Lend Lease Corporation
K M Lukasewicz Pty Ltd	Leon Liu
Kam Chung Chan	Leong Yee Pty Ltd
Kayora Pty Ltd	Les Dudman
Kazi Portolesi Solicitors (Belante P/L)	Lewis & Associates Consulting Pty Ltd
Kerry Jones Strategic Management Services Pty Ltd	Lewis Family Investments Pty Ltd
Kevin Duffy	Lewis Hotels
Khoury Bros & Co	LFG Holdings Pty Ltd
Kierulf David Pty Ltd	Li Wei
Kingold Group	Liberal Party of Australia Queensland Division
Kingston Capitol Australia	Lifestyle Markets
Kingswood Hotel	Linda Wong
Kirribilli Ex-Servicemen's Club	Lindale Pty Ltd
Kizar Pty Ltd T/a Quakers Inn	Link Printing
Kladis Wines	Lipa Pharmaceuticals Pty Ltd
KPMG	LJ & CA Young Pty Ltd
Kreslovic Homes Pty Ltd	Lobana Trading Co Pty Ltd
L Thorstensen	Lochie Pty Ltd
LAF Group	Lockheed Martin Global Inc
Lake Macquarie Hotel/ (AHA)	Lorenzo & Carla Pastrello

Appendix 26 List of Donors the Authority referred to the Crown Solicitor for failing to lodge a declaration by the due date of 30 August 2007

Luddenham Management Pty Ltd

Lum Pty Ltd

Lundbeck Australia Pty Ltd

Luong William

Lynch Flowers

M & B Moses Investments Pty Ltd T/as Murphy's Produce

M Aouad

M Carapiet

M Coleman

M F O'Hara

M H M Australasia Pty Ltd

M J Pinhorn and Associates,

M Jarvin

M Maguire

M Roberts

Ma Ping

Macarthur Intermodal Shipping Terminal (MIST)

Macarthur Regional Constructions

Macarthur Regional Development

Macquarie Street Investments Pty Ltd

Macquarie University Union Ltd T/A Students at Macquarie

Macquarie University Union Ltd T/A Students at Macquarie

Macswen Communications Pty Ltd

Madison Capital

Maha Bodhi Monastery

Mallesons Stephen Jacques

Malueta Pty Ltd

Management and Media Pty Ltd

Manildra Group of Companies

Manpower Services (Australia) Pty Ltd

Marbal Pty Ltd

Marcarian & Co

Marchese & Partners Architects

Margie Clarke

Marianne Saliba

Mario Nasso

Maritime Union of Australia (MUA)

Mark Bryant

Mark Ryan

Mark Skinner

Mark Sukkar

Markson Sparks Pty Ltd

Master Plumbers Association of NSW

Matrix HR International

Matthew H Daniel

Matthew Marks

Max Ferguson Holdings Pty Ltd

Maxgaming

MBC Cleaning Service

MBT Administrative Services Pty Ltd

McDonald Jones

Medicraft Australia Pty Ltd

Merc Projects Pty Ltd

Mercedes Benz (Australia) Pty Ltd

Merivale Group

Merrill Lynch

Appendix 26 List of Donors the Authority referred to the Crown Solicitor for failing to lodge a declaration by the due date of 30 August 2007

Metrofit Interiors	N M Rothschild & Sons (Aust) Limited
Mia Diagnostic Group Ltd	N Mirad
Michael and Maree O'Hara	NAB/MLC
Michael Barakat Holdings	Naranda Heights Pty Ltd
Michael Bosch	Nashar Holdings Pty Ltd
Michael Fisher	National Entitlements Security Trust
Michael Kordek	Navarre Group International
Michael Patterson	Neil Streeter
Michael Power	Net Harbour
Michael Raad	New Media Solutions
Michaline Pty Ltd	Newcastle Coal Company Pty Ltd
Michell Truck Bodies Pty Ltd	Newhaven Park Stud Ltd
Michelle Adams	News Limited
Millennium Trust	Nicholas Agency & Co Pty Ltd
Mincom NSW	Nigel Thomas
Mingsheng Group	Nihal Gupta
Mintjay Pty Ltd	Nikki Bundy
Miray Property & Development P/L	NJ Papallo & Co P/L
Mitchell & Partners	Northbridge Plaza Centre Management
MLC/National Aust Bank	Nortons on Norton
Mr & Mrs E Chahine	Nouveau Holdings Pty Ltd
Mr & Mrs F Carioti	Novartis Pharmaceuticals Australia Pty Ltd
Mr Darvall	NRMA Motoring Services
Mullungeen Pty Ltd	NSW Development Management Group Pty Ltd
Murray Neil	NSW Farmers' Association
Murray Offord	NSW Road Transport Association Inc
N Berman	Nut Roaster Co Pty Ltd
N Kulakowski	Oceanic Multitrading Pty Ltd

Appendix 26 List of Donors the Authority referred to the Crown Solicitor for failing to lodge a declaration by the due date of 30 August 2007

Offer Pty Ltd T/A Jamison Hotel	Peter & Elizabeth Antonopoulos
On Time Tiling Pty Ltd	Peter Anderson
Orica Aust Pty Ltd	Peter Bega
Oscars Hotel	Peter Brigger
PT Investment Group	Peter Coad
Pacific Aviation Pty Ltd	Peter Copko
Pacific Group	Peter Doyle
Pacific Publications Ltd	Peter Fitzgerald
Pakistan Australia Association	Peter Gardiner
Pan Yanping	Peter Hulsing
Panasonic Australia Limited	Peter Kerr
Panthers	Peter Redlich
Parit Pty Ltd	Peter Ryba
Parramatta Leagues Club	Peter Selvarajah
Parras and Associates	Peter Wieland
Parsons Brinckerhoff Australia Pty Ltd	Peter Wynne
Patrick Corporation	Philip Lobo
Patrick Finance Co	Philip Salter
Paul Haege	Piccadilly Financial Services P/L
Paul Maloney	Pierre Raffoul
Paul Ramsay	Pine Tea & Coffee Pty Ltd
Paul Sathio	Polarco Pty Ltd
Paul Whelan	Polo Smash Repairs
Pavilion Beach Group Pty Ltd	Power Pacific
Penatacle Group	Powertel Ltd
Penrith Lakes Development Corporation	PPB
Penrith Rugby League Club	Prestige Building Services
Peroy's Chartered Accountants	Prestige Finishers Pty Ltd

Appendix 26 List of Donors the Authority referred to the Crown Solicitor for failing to lodge a declaration by the due date of 30 August 2007

Prestige Holdings Pty Ltd	Regional Express
Primrose Hill Development	Retirement Village Association
Product Direct Pty Ltd	Richard Hains
Puma Constructions No 2 Pty Ltd	Richard Nader
Quay Group Pty Ltd	Richard Rowe
Quay Restaurant	Richard Symes
R Johnson	Rinker Group Limited
R Murray	Robert Hampshire
R Owens	Robert Herbert
R Shemesian	Robert Huang
RA & JE Ferguson	Robyn Bain
Raferty's Resort	Rod Salmon
Railway Hotel	Ron Fisher
Rainbow Force Pty Ltd	Ron Greentree
Raine & Horne Pty Ltd	Ron Greentree
RAMS Finance Pty Ltd	Rothschild Australia Ltd
Randwick Rugby	Royal Hotel
Raxigi P/L	RS & GA Porter T/as Collingwood Hotel
Ray Allan	RSP Recruitment
Raymond Jones	Rural Skin Cancer Services
Rayna Pty Ltd	Russelan Pty Ltd
RB & RB Investments Pty Ltd	Ryans Earthmoving P/L
RBJ Investments	S B Roth
RDL Investments NSW Pty Ltd	S Boro
Reachbold Pty Limited	S Cruickshanks
Rebecca Chan	S Danias
Redbran Pty Ltd	Salomon Smith & Barney
Redgum Timber Producers Aust Pty Ltd	Sam Chisholm

Appendix 26 List of Donors the Authority referred to the Crown Solicitor for failing to lodge a declaration by the due date of 30 August 2007

Sam Pambris	SMP International
Sam Russo	Solutions Marketing and Consulting Pty Ltd
Sam Saade	Solutions Property Services Pty Ltd
Samuel Tsang	Solvay Pharmaceuticals
Sans Souci Central Pty Ltd	Soul Converged Communications
Santarosa Stapleton	South Kingscliff Developments
Santo and BM Rapisarda	South West Surgeries Pty Ltd
Santos Ltd	Southern Distribution Hub Pty Ltd
Sarkis Elias	Space Consulting Group Pty Ltd
Sasso Precast Concrete	Splash Consulting Group Pty Ltd
SCN Holdings Ltd	SSL Facilities Management Pty Ltd
Sebastian Engineering Pty Ltd	Stacks Managed Investments
Sebvell Pty Ltd	Stadium Broadcast International Pty Ltd
SecureNet Limited	Stephen Roberts
Sell & Parker Pty Ltd	Steve Moon
Sessiahs	Steve Mori
Shane Curry	Strategic Capital Management
Shellharbour City Council	Strathfield Hotels P/L
Shimden Pty Ltd	Stroudgate Australasia Pty Ltd
Shore Property	Sukari Properties
Shultz First National	Sunland Group Limited
Sibcart Pty Ltd T/as Kincumber Hotel	Super Release Pty Ltd
Sign-a-Rama	Superbowl Chinese Restaurant
Simhilt Constructions Pty Ltd	Susie Gemmell
Sinclair Knight Merz	Sustainable Harvest Group Ltd
Sita Environmental Solutions	Swan Services Pty Ltd
Sleiman Kannan	Syd Fly Eagle Intermodal Transport
Smorgon Steel Ltd	Sydney Buy Homes Pty Ltd

Appendix 26 List of Donors the Authority referred to the Crown Solicitor for failing to lodge a declaration by the due date of 30 August 2007

Sydney International College of Business Pty Ltd	The Warringah Club
Talent 2 Works	Theo Premetis
TCW Consulting	Three Parts Pty Ltd
Team City Pty Ltd	Thrifty Car Rental
Ted Listkow	Thurgoona Country Club
Tee and Jay Fresh Fruit Pty Ltd	Tianda Pharmaceuticals
Telstra Stadium Australia	Tibra Captial
Templeman Consulting	Tin Tak Pty Ltd
Tempo Security	Tingha Trading Pty Ltd
Tendwine Pty Ltd	TK Pacific Marketing
Terranora Group	Tony Atana
Terrigal Grosvenor Lodge Pty Ltd	Tony Bleasdale & Associates
Terry and Grace Condon	Tony Clark
Terry Diamantis	Tony Donnelley
The Australian Chin Lien Chinese Association Incorporated	Tooheys
The Australian Chinese Teo Chew Assoc Inc	Total Concept Productions (Australia) Pty Ltd
The Australian Hotels Association (AHA) Central Coast Division	Touche Charters
The Beach House	Touraust Hotels Pty Ltd
The Beville Group	Tourism & Transport Forum Australia (TTF)
The Condon Group Pty Ltd	Tran Corporation Pty Ltd
The Epoch Times	Transdev Australia Pty Ltd
The GPT Group	Transfield Services Pty Ltd
The Harrington Group	Transit First
The Hawkesbury Club	Transnational Investment Pty Ltd
The Independent Liquor Group	Tredex Pty Ltd
The Lewis Land Group of Companies	Tri City Trucks (NSW) Pty Ltd
The Strategic Issues Management Group	Tricom Futures Services Pty Ltd
The Triulcio Family Trust	Triforce Australia Pty Ltd

Appendix 26 List of Donors the Authority referred to the Crown Solicitor for failing to lodge a declaration by the due date of 30 August 2007

Triple C M Pty Ltd	Vantona Pty Ltd
Tristan Mercer	Vendom Constructions Pty Ltd
TTI Stone	Venus & Mars
Tunborn Pty Ltd t/a Bexley North Hotel	Verekers Lawyers
Turning Point Solutions	Vic Soghomonian
Turramurra Shopping Centre	Vincent Buda & Company
Tuscany Ristorante	Vision CRC Ltd
Twin Creeks Golf & Country Club	Vittoria Coffee
Tynan Motors	Vivah Pty Ltd
Tyrell Corporation Pty Ltd	Vladis Group
Tyrell's Wines	Vlandis Group Pty Ltd
Tyrone Shen	VSC Pang
Uecomm Limited	W Waugh Hotel Management Services
Ulicorp Pty Ltd	Walter Construction Group
Ultimate Outdoor Pty Ltd	Wardan Development Pty Ltd
Unilife Medical Solutions Ltd	Weathertex Pty Ltd
Unisys Australia	Wehbe Investments Pty Ltd
United Rail Services Ltd	Welston Pty Ltd
Unitract Ltd	Westbus Pty Ltd
Universal Trading	Westminister Wine
University of NSW	Westrac
Urban Pacific Limited	WG McNally & Co
Urban Peninsula Pty Ltd	Whitby Bloodstock
V Archetti	Whitehorse Constructions Pty Ltd
V Pisani	Wija Investments Development Pty Ltd
V Sacco	William Buck
Valard Property Group	William Chui
Valda Trading	Wilton Property Group

Appendix 26 List of Donors the Authority referred to the Crown Solicitor for failing to lodge a declaration by the due date of 30 August 2007

Wise Property Group

Wizard Home Loans Pty Ltd

Woolworths Ltd

World Audio Radio 2

World Lebanese Cultural Union

Worldwide Development Pty Ltd

WYM Decoration Pty Ltd

Xcel Properties

Xenith Investment Management

Xiang Rong Construction Pty Ltd

Xstrata Coal

Yosica Dairy Group Pty Ltd

Youma Constructions Pty Ltd

Yves El Khoury

Zamosay Pty Ltd

Zerillicon Pty Ltd

Zhinar Architects

ZicZac Pty Ltd

Zilver Restaurant

ZZR Construction Pty Ltd

Glossary

Assembly

Legislative Assembly of New South Wales.

Auditor

A registered company auditor within the meaning of the *Corporations Act 2001* of the Commonwealth.

Authority

Election Funding Authority of New South Wales.

Candidate

A person nominated as a candidate at an election in accordance with the *Parliamentary Electorates and Elections Act 1912*, and includes a person applying for registration as, or registered as, a candidate in the Register of Candidates for the election.

Contest(ed)

Where more than one person contends or competes in an election.

Council

The Legislative Council of New South Wales.

Donor

A person who makes a gift to a party, group or candidate.

Election

An Assembly general election or by-election, a periodic Council election, a Local Government ordinary election or by-election.

Election Day

Is the day for the taking of the polls at an election.

Electoral District

A district for the election of a member to serve in the Assembly.

Endorsed

In relation to a party, means endorsed, selected or otherwise accredited to stand as a representative of the party.

Expenditure

Includes any disposition of property.

General Election

Assembly general election and a periodic Council election held, or to be held concurrently.

Gift

Any disposition of property made by a person to another person and includes the provision of a service (other than volunteer labour).

Group

A group of candidates, or part of a group of candidates, for election to the Council.

Head of Group

The candidate whose name appears first on the 'Claim to be included in a group' lodged with the New South Wales Electoral Commission.

Glossary

Nomination Day

The day of nomination is, in relation to a general election, the day named on the Writ for the periodic Council election on which all nominations of candidates must be made.

Official Agent

A person who is appointed by a candidate or group of candidates to act on behalf of himself/herself or the group. A person appointed as an official agent assumes full responsibility for complying with the requirements of the Act and Regulations.

Parliament

The Parliament of New South Wales.

Party

A body or organisation, incorporated or unincorporated, having as one of its objects or activities, the promotion of the election to parliament of a candidate or a group of candidates endorsed by it or by a body or organisation of which it forms part.

Periodic Council Election

An election held for the return of 21 members of the Legislative Council.

Prescribed

Is to impose with authority.

Primary Votes

In relation to a candidate at an election, the total number of formal first preference votes recorded for the candidate

on all ballot papers. In relation to a group of candidates, or a party with endorsed candidates, at an election, the total number of formal first preference votes recorded for the candidates on all ballot papers, other than the votes recorded for candidates for election to the Assembly.

Registered

This means registered in accordance with the Act, except in the case of a party.

Registered party

A party registered under Part 4A of the *Parliamentary Electorates and Elections Act 1912*, being a party which stated in its application for registration that it wished to be registered for the purposes of the Act.

Regulations

The *Election Funding Regulation 2004*.

Returning Officer

A person who is legally authorised to act on behalf of the New South Wales Electoral Commission to manage a Legislative Assembly election for an electoral district.

The Act

The *Election Funding Act 1981*.

Writ

The document issued by the Governor ordering the election of a member or members of parliament.

Index

Achievements	13	Glossary	114
Advertising	29	Guarantee of service	35
Annual returns and disclosures	26	History	12
Appendices	56	Internal audit committee	33
Audited Financial Statements	43	Legislation	12
Candidate information seminars	27	Legislative reforms	16
Central Fund	16	Liaison with other jurisdictions	32
Constituency Fund	16	Local government elections	27
Chairperson's Report	54	Management and structure	12
Challenges	25	New South Wales Electoral Commission	9
Complaints handling	35	No means of identifying donors	25
Consultancies	57	Objectives	14
Corporate governance	33	Operating environment	25
Corporate Plan	13	Operations	33
Declarations	26	Organisation	9
Determining entitlements and funding	35	Parliamentary Inquiry	35
Disclosure actions	36	Performance Management	34
Electoral Commissioner	12	Political Education Fund	17
Election Funding and Entitlements	16	Production processes	35
Election Funding Authority	9	Prosecutions	36
Election Funding Authority mission	8	Public Accountability	34
Election Funding Authority values	8	Public availability of records	34
Equal employment opportunity (EEO)	57	Research linkages	32
Ethnic affairs priority statement (EAPS)	58	Resources	10
Financial budgeting	34	Results and Services Logic	15
Financial Statements	46	Returning Officers	27
Freedom of information (FOI)	59	Review of procedures, forms and manuals	28
Forms	19	Risk management	34
Funding entitlements	71, 72	Services	15
Future directions	31	Stakeholders	10

Index

State election	20
Strategic planning	34
Sustainable management	29
Website	19

Contacts

The Election Funding Authority

Level 25, 201 Kent Street
Sydney NSW 2000 Australia

GPO Box 832, Sydney NSW 2001 Australia

Telephone: +61 2 9290 5999
Fax: +61 2 9290 5991

Website: www.efa.nsw.gov.au

Office hours: Monday - Friday, 8.30 am - 5.00 pm

